



CUSHMAN &
WAKEFIELD

LUND
COMPANY

FOR LEASE

5408 N. 99TH STREET

OMAHA, NE 68134



NOAH LUDWICK

Associate

+1 402 548 4049

noah.ludwick@lundco.com

Independently Owned and Operated / A Member of the Cushman & Wakefield Alliance

Cushman & Wakefield Copyright 2025. No warranty or representation, express or implied, is made to the accuracy or completeness of the information contained herein, and same is submitted subject to errors, omissions, change of price, rental or other conditions, withdrawal without notice, and to any special listing conditions imposed by the property owner(s). As applicable, we make no representation as to the condition of the property (or properties) in question.



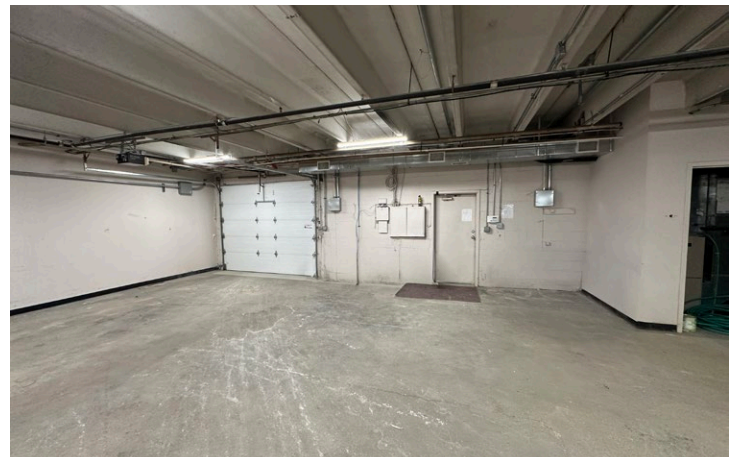
PROPERTY DESCRIPTION

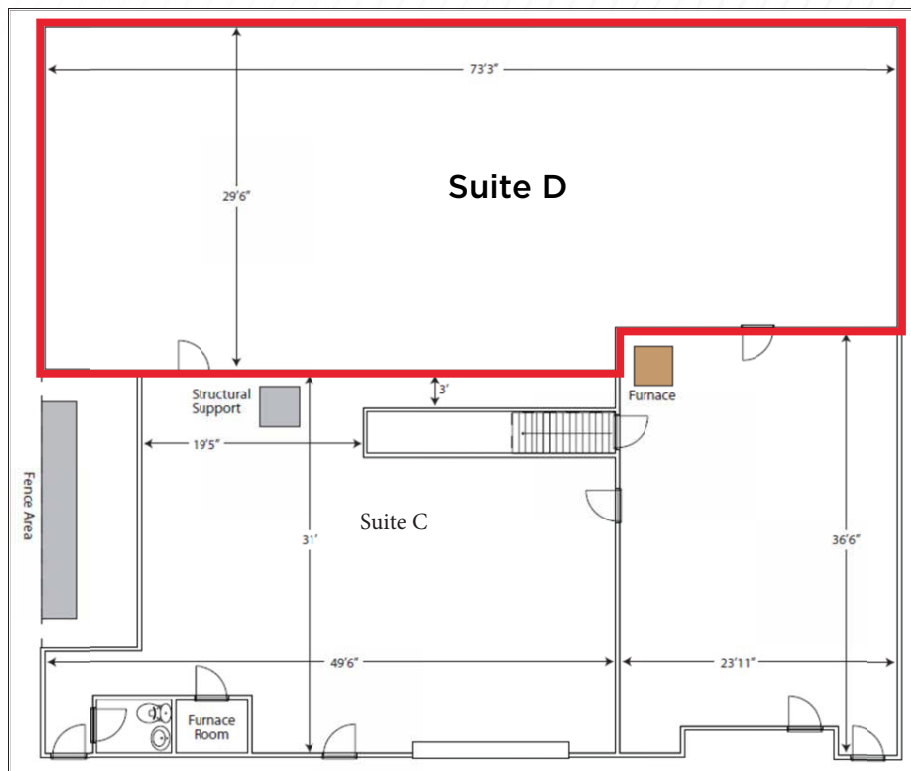
2,161 SF of shared storage available. The space is located on the lower level with climate control and is accessible by a 10'x10' overhead door. Affordable space with close proximity to the interstate. Additional warehouse and office space available. Contact listing agent for more details.



PROPERTY DETAILS

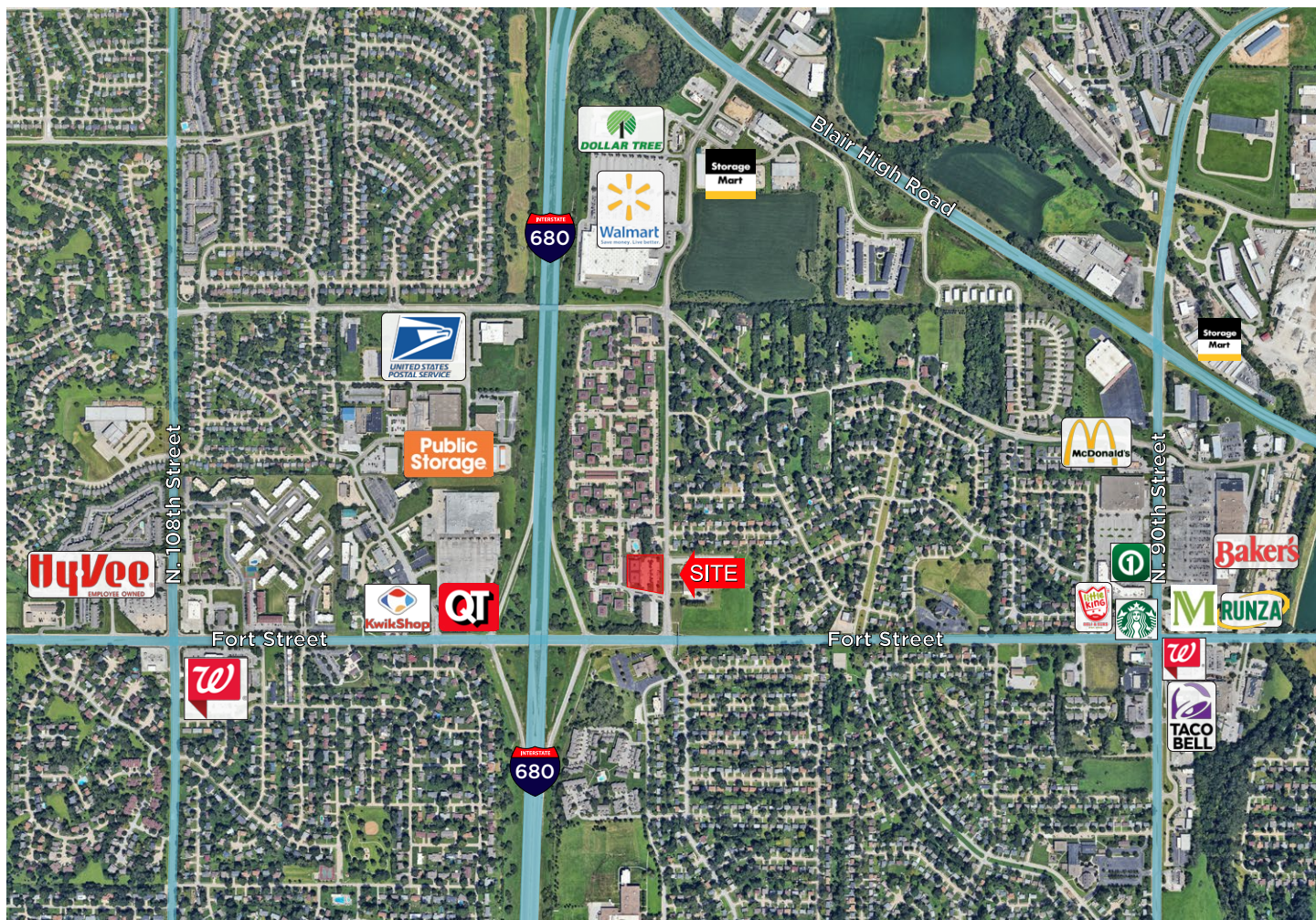
Rental Rate	\$1,200/Month
Total Available	2,161 SF
Total Building Size	5,320 SF
Year Built	1976
Site Area	0.71 AC
Zoning	CC
Power	3 Phase
Drive-In Doors	One (1) 10' x 10'





*Floor plans are approximate and for illustration purposes only.

*Additional shared space available in Suite C. Contact Listing agents for details.



FOR MORE INFORMATION, PLEASE CONTACT:

NOAH LUDWICK

Associate

+1 402 548 4049

noah.ludwick@lundco.com



Independently Owned and Operated / A Member of the Cushman & Wakefield Alliance

©2025 Cushman & Wakefield. All rights reserved. The information contained in this communication is strictly confidential. This information has been obtained from sources believed to be reliable but has not been verified. NO WARRANTY OR REPRESENTATION, EXPRESS OR IMPLIED, IS MADE AS TO THE CONDITION OF THE PROPERTY (OR PROPERTIES) REFERENCED HEREIN OR AS TO THE ACCURACY OR COMPLETENESS OF THE INFORMATION CONTAINED HEREIN, AND SAME IS SUBMITTED SUBJECT TO ERRORS, OMISSIONS, CHANGE OF PRICE, RENTAL OR OTHER CONDITIONS, WITHDRAWAL WITHOUT NOTICE, AND TO ANY SPECIAL LISTING CONDITIONS IMPOSED BY THE PROPERTY OWNER(S). ANY PROJECTIONS, OPINIONS OR ESTIMATES ARE SUBJECT TO UNCERTAINTY AND DO NOT SIGNIFY CURRENT OR FUTURE PROPERTY PERFORMANCE.



**CUSHMAN &
WAKEFIELD**

LUND
COMPANY