



(+/-) 0.46 ACRE DEVELOPMENT OPPORTUNITY ON SELKIRK AVENUE

DEVELOPMENT LAND FOR SALE
674-680 SELKIRK AVE

Chris Hourihan
Associate Vice President

Christopher Hourihan Personal Real Estate Corporation

T 204 934 6215

C 204 995 0225

chris.hourihan@cwstevenson.ca





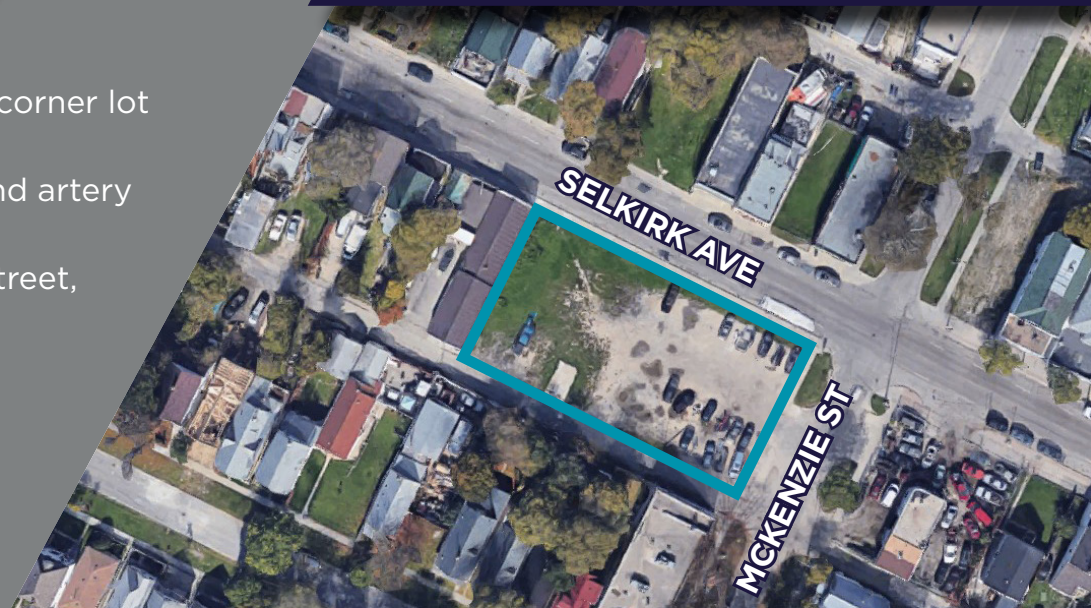
PROPERTY HIGHLIGHTS

- High-exposure development opportunity located on a corner lot offering exceptional visibility
- Situated on Selkirk Avenue, a major Winnipeg North End artery with high traffic
- Excellent access to major routes including McPhillips Street, Arlington Avenue, and Main Street
- Opportunity to consolidate parcels and re-zone the amalgamated parcel to either RMF-L or C2

LIST PRICE: \$575,000.00

PROPERTY TAXES: \$6,214.80 (2024)

(+/-) 0.46 ACRES



Independently Owned and Operated / A Member of the Cushman & Wakefield Alliance ©2025 Cushman & Wakefield. All rights reserved. The information contained in this communication is strictly confidential.

This information has been obtained from sources believed to be reliable but has not been verified. NO WARRANTY OR REPRESENTATION, EXPRESS OR IMPLIED, IS MADE AS TO THE CONDITION OF THE PROPERTY (OR PROPERTIES) REFERENCED HEREIN OR AS TO THE ACCURACY OR COMPLETENESS OF THE INFORMATION CONTAINED HEREIN, AND SAME IS SUBMITTED SUBJECT TO ERRORS, OMISSIONS, CHANGE OF PRICE, RENTAL OR OTHER CONDITIONS, WITHDRAWAL WITHOUT NOTICE, AND TO ANY SPECIAL LISTING CONDITIONS IMPOSED BY THE PROPERTY OWNER(S). ANY PROJECTIONS, OPINIONS OR ESTIMATES ARE SUBJECT TO UNCERTAINTY AND DO NOT SIGNIFY CURRENT OR FUTURE PROPERTY PERFORMANCE.

AREA MAP

MOUNTAIN AVE

MAIN ST

SALTER ST

MCGREGOR ST

BURROWS AVE

674-680 SELKIRK AVE

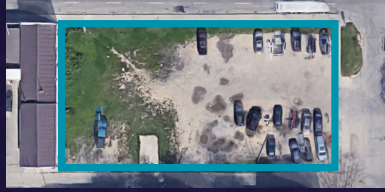


SELKIRK AVE

DUFFERIN AVE

CITY MAP

674-680 SELKIRK AVE



DRIVETIME

MAIN ST: 3 MINS

MCPHILLIPS ST: 3 MINS

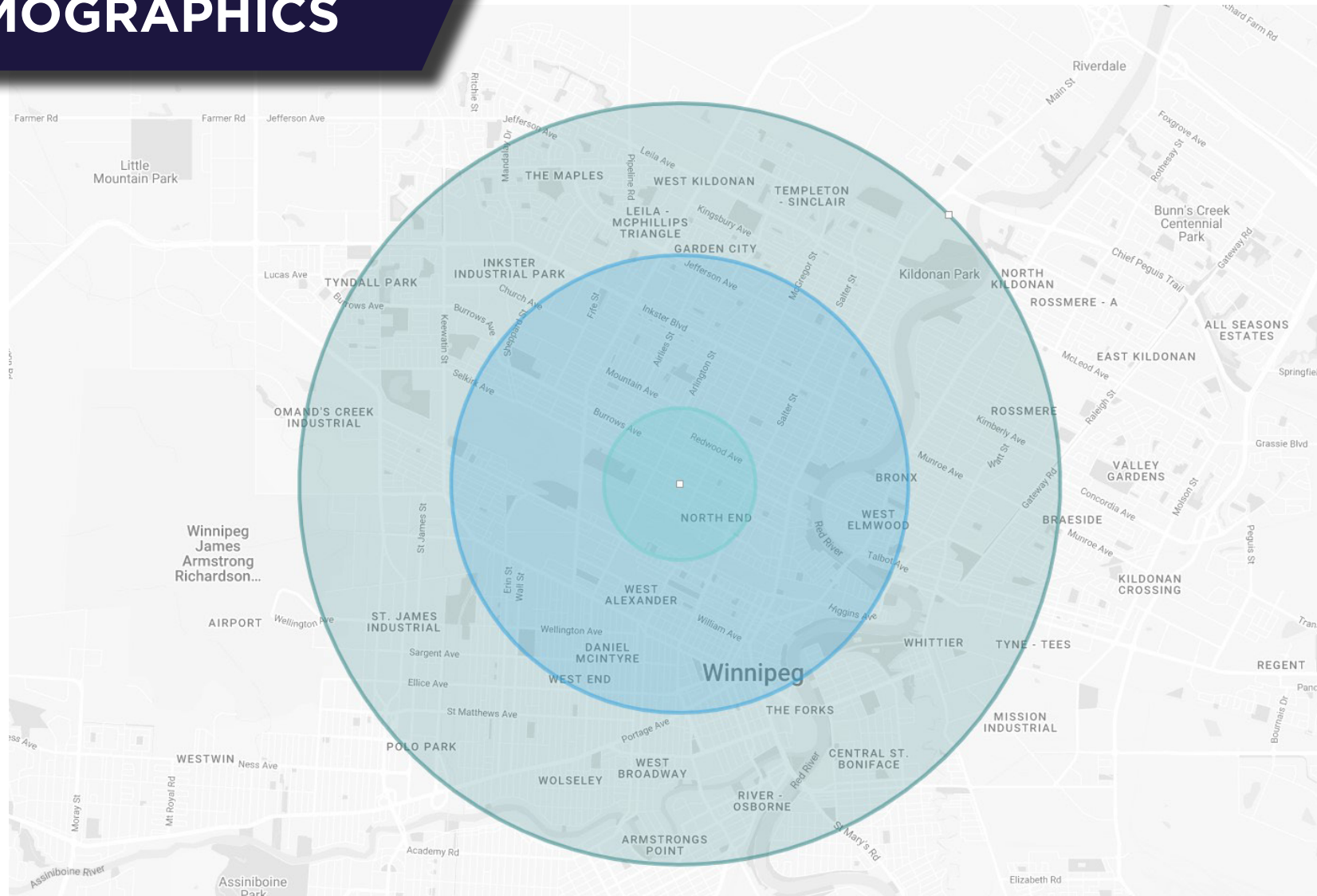
PORTAGE AVE: 8 MINS

DOWNTOWN WINNIPEG: 11 MINS

PERIMETER HWY: 13 MINS



DEMOGRAPHICS



	POPULATION	HOUSEHOLD INCOME	AVERAGE AGE	HOUSEHOLD SPENDING
1KM	12,144	\$54,388.14	35	\$51,411.47
3KM	99,665	\$64,741.10	36	\$59,353.88
5KM	238,578	\$72,539.94	38	\$64,755.97



CONTACT

Chris Hourihan
Associate Vice President

Christopher Hourihan Personal Real Estate Corporation

T 204 934 6215

C 204 995 0225

chris.hourihan@cwstevenson.ca



Independently Owned and Operated / A Member of the Cushman & Wakefield Alliance ©2025 Cushman & Wakefield. All rights reserved. The information contained in this communication is strictly confidential. This information has been obtained from sources believed to be reliable but has not been verified. NO WARRANTY OR REPRESENTATION, EXPRESS OR IMPLIED, IS MADE AS TO THE CONDITION OF THE PROPERTY (OR PROPERTIES) REFERENCED HEREIN OR AS TO THE ACCURACY OR COMPLETENESS OF THE INFORMATION CONTAINED HEREIN, AND SAME IS SUBMITTED SUBJECT TO ERRORS, OMISSIONS, CHANGE OF PRICE, RENTAL OR OTHER CONDITIONS, WITHDRAWAL WITHOUT NOTICE, AND TO ANY SPECIAL LISTING CONDITIONS IMPOSED BY THE PROPERTY OWNER(S). ANY PROJECTIONS, OPINIONS OR ESTIMATES ARE SUBJECT TO UNCERTAINTY AND DO NOT SIGNIFY CURRENT OR FUTURE PROPERTY PERFORMANCE.