



FOR LEASE

29 E McCARTY STREET

 CUSHMAN & WAKEFIELD

INDIANAPOLIS, IN 46225

PROPERTY HIGHLIGHTS

- Well maintained historic buildings
- Excellent access to Meridian Street and I-70
- Free parking (23 spaces)
- Monument signage available
- Building A - 800 SF
- Building B - 1,486 SF - Existing medical office build-out with plumbing in place
- \$19.50/SF net of janitorial

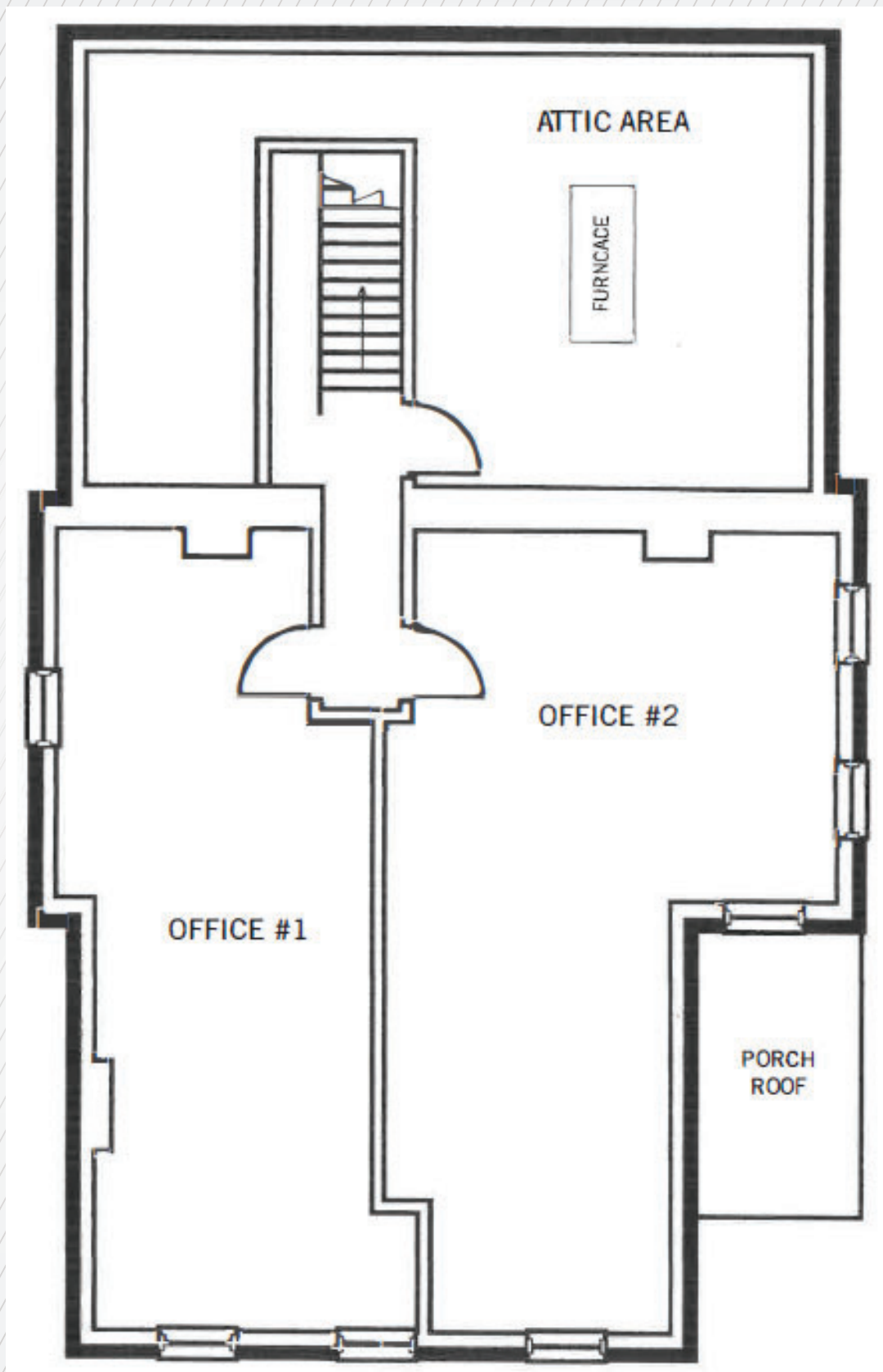


E McCarty Street



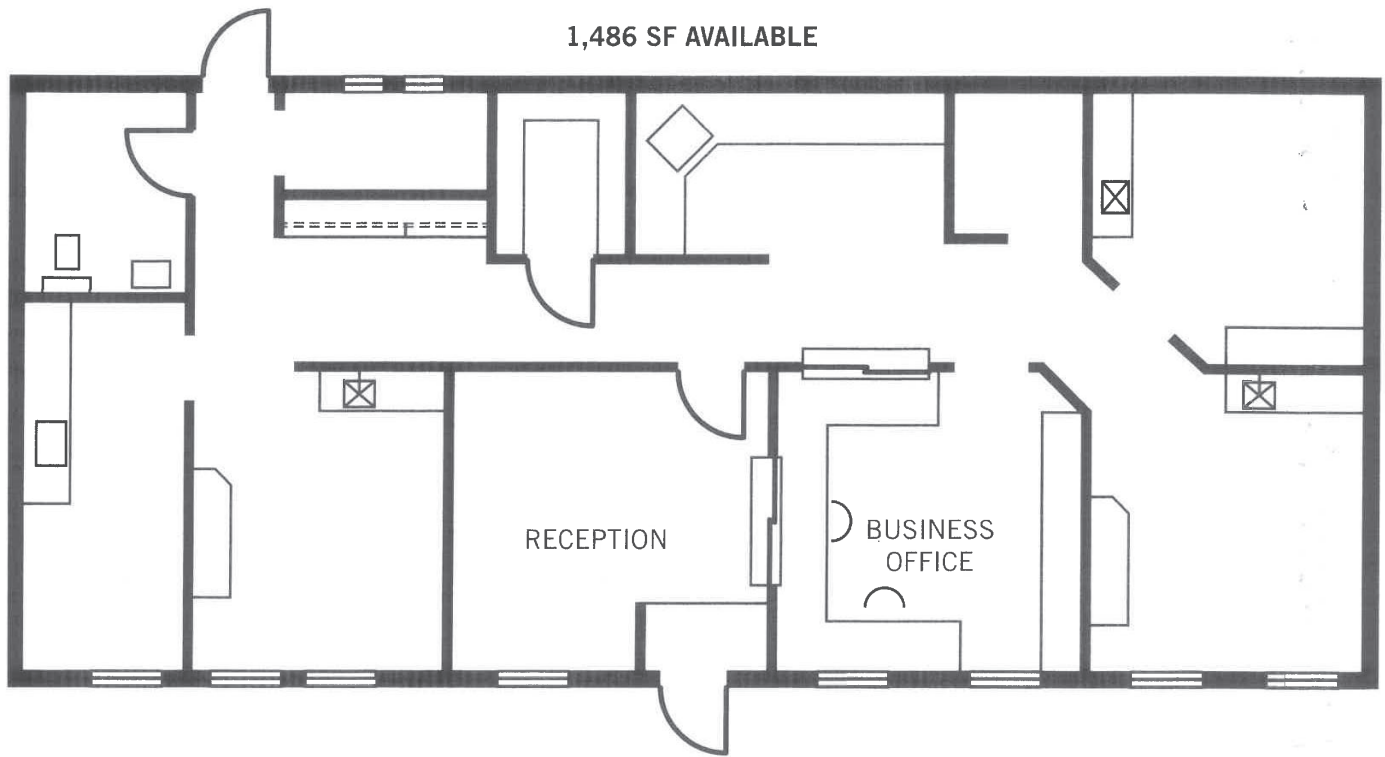
FLOOR PLANS - BUILDING A

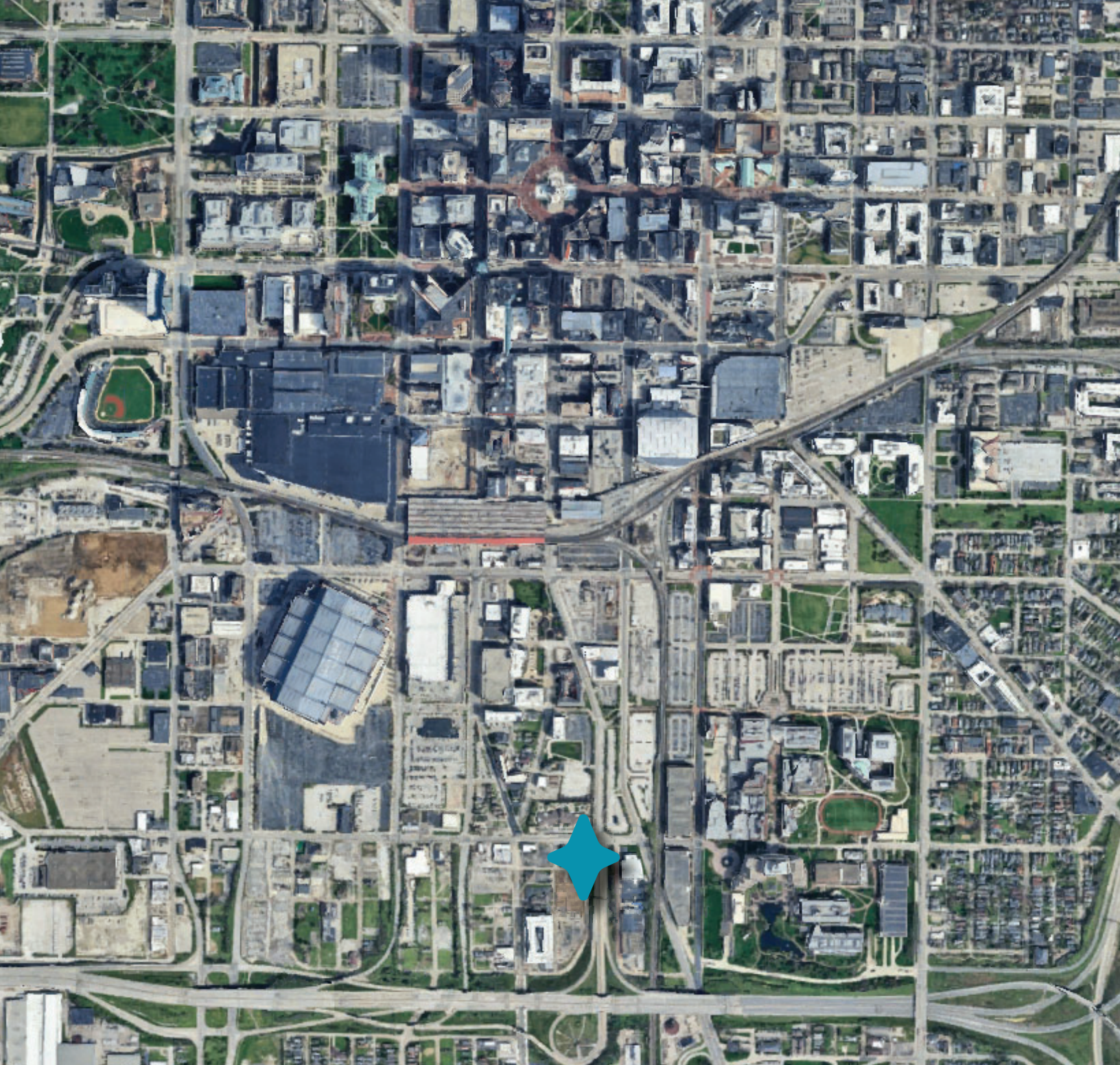
Third Floor - 800 SF



FLOOR PLANS - BUILDING B

Total Available SF: 1,486 SF





CONTACT

JOSHUA GRAHAM

Director

+1 317 639 0491

joshua.graham@cushwake.com

LUKE LONNEMAN

Associate

+1 317 352 5419

luke.lonneman@cushwake.com

JON R. OWENS, SIOR

Managing Director

+1 317 639 0447

jon.owens@cushwake.com

©2025 Cushman & Wakefield. All rights reserved. The material in this presentation has been prepared solely for information purposes, and is strictly confidential. Any disclosure, use, copying or circulation of this presentation (or the information contained within it) is strictly prohibited, unless you have obtained Cushman & Wakefield's prior written consent. The views expressed in this presentation are the views of the author and do not necessarily reflect the views of Cushman & Wakefield. Neither this presentation nor any part of it shall form the basis of, or be relied upon in connection with any offer, or act as an inducement to enter into any contract or commitment whatsoever. NO REPRESENTATION OR WARRANTY IS GIVEN, EXPRESS OR IMPLIED, AS TO THE ACCURACY OF THE INFORMATION CONTAINED WITHIN THIS PRESENTATION, AND CUSHMAN & WAKEFIELD IS UNDER NO OBLIGATION TO SUBSEQUENTLY CORRECT IT IN THE EVENT OF ERRORS.

