

Prime Street-Level Space in the Heart of Downtown

For Lease | 1867 Prospect Ave E, Cleveland, Ohio 44115



1867 Prospect Ave E

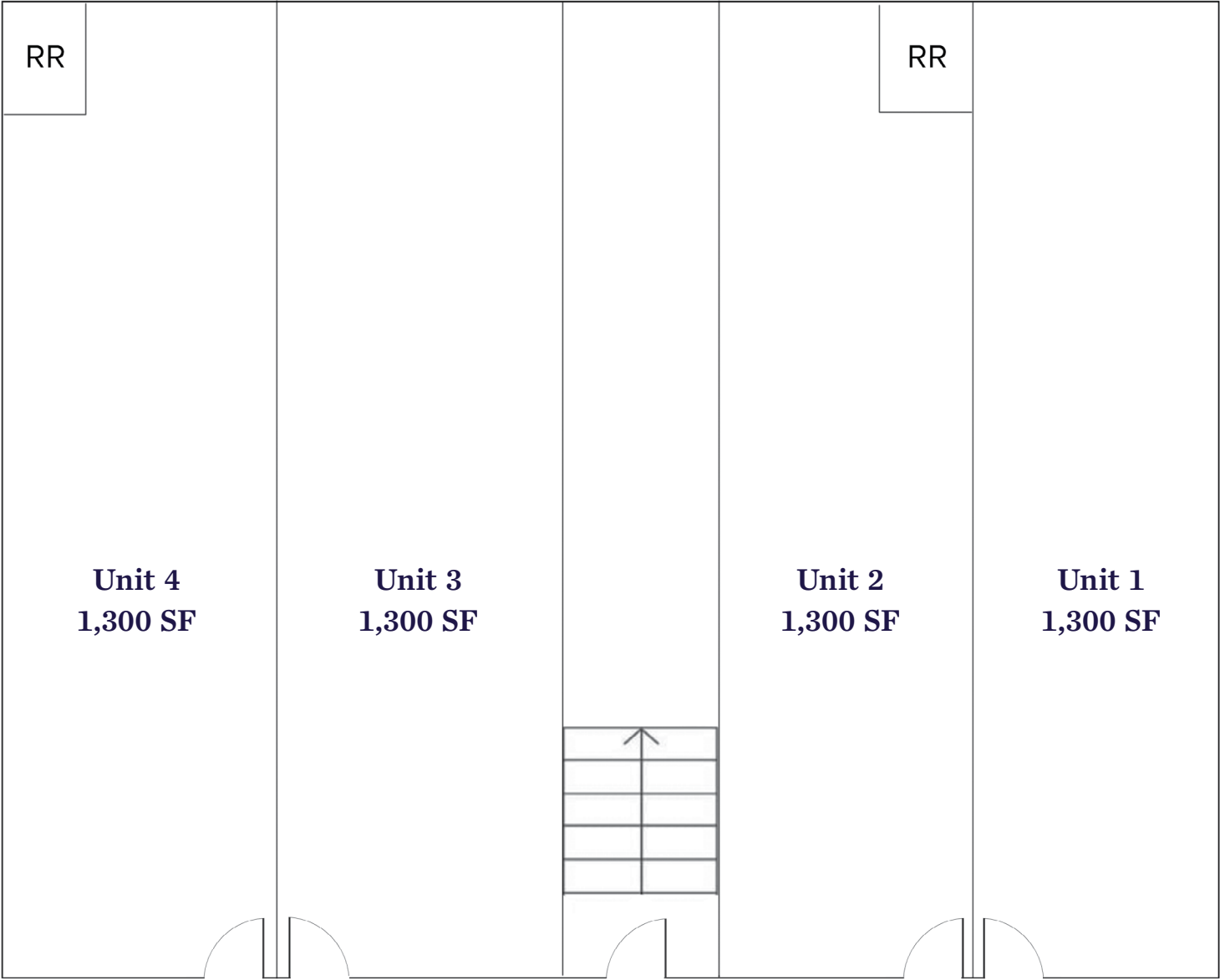
- Situated directly across from the Wolstein Center and just steps from Cleveland State University and Playhouse Square, this location benefits from constant foot traffic and high visibility
- Perfect for independent retailers, service providers, or professional offices seeking a street-level presence in a vibrant urban corridor
- Situated in the heart of downtown with easy access to public transit, major roadways, and a built-in customer base of students, professionals, and event-goers
- Flexible layouts can accommodate a variety of uses with functional square footage, storefront windows, and adaptable interiors ready for your customization
- 12 covered parking spaces available for tenants in rear exterior garage



Availability

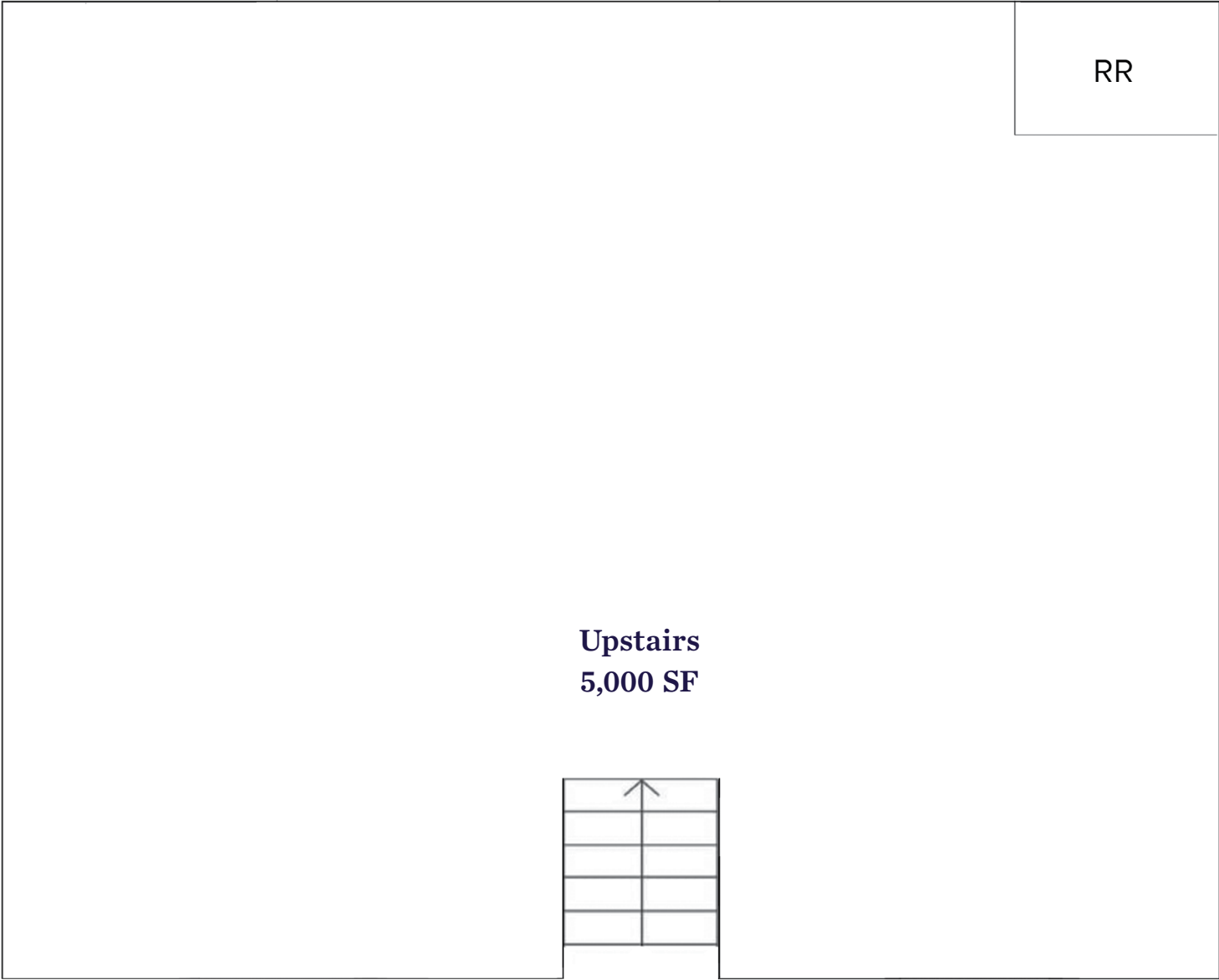
Suite	Size	Rent/Month
1	1,300 SF	\$1,500
2	1,300 SF	\$1,500
3	1,300 SF	\$1,500
4	1,300 SF	\$1,500
Upstairs	5,000 SF	\$5,000

First Floor



Prospect Ave E

Second Floor



Prospect Ave E

Flats East Bank

Warehouse District

Future Home of Sherwin Williams Headquarters

Terminal Tower

ROCKET Mortgage
by Quicken Loans

East 4th

ROCK & ROLL HALL OF FAME

Playhouse Square

1867 Prospect Ave

WOLSTEIN CENTER
CLEVELAND STATE UNIVERSITY

CLEVELAND STATE UNIVERSITY
1964

ST. VINCENT CHARITY MEDICAL CENTER

Cadillac

261,424 Population (2024 5 Mile)	34.6 Median Age (2024 5 Mile)	121,626 Households (2024 5 Mile)	\$68,421 Household Income (2024 5 Mile)	12,538 Total Businesses (2024 5 Mile)	180,529 Total Employees (2024 5 Mile)
---	--	---	--	--	--



1867 PROSPECT AVE E CLEVELAND, OHIO 44115

RICO A. PIETRO, SIOR

Principal

rpietro@crescorealestate.com

+1 216 525 1473

ROBBY MARTINELLI

Associate

rmartinelli@crescorealestate.com

+1 216 232 4104

KIRSTEN PARATORE

Senior Associate

kparatore@crescorealestate.com

+1 216 525 1491



Cushman & Wakefield | CRESCO
6100 Rockside Woods Blvd, Suite 200
Cleveland, Ohio 44131

crescorealestate.com

©2025 Cushman & Wakefield. All rights reserved. The information contained in this communication is strictly confidential. This information has been obtained from sources believed to be reliable but has not been verified. NO WARRANTY OR REPRESENTATION, EXPRESS OR IMPLIED, IS MADE AS TO THE CONDITION OF THE PROPERTY (OR PROPERTIES) REFERENCED HEREIN OR AS TO THE ACCURACY OR COMPLETENESS OF THE INFORMATION CONTAINED HEREIN, AND SAME IS SUBMITTED SUBJECT TO ERRORS, OMISSIONS, CHANGE OF PRICE, RENTAL OR OTHER CONDITIONS, WITHDRAWAL, WITHOUT NOTICE, AND TO ANY SPECIAL LISTING CONDITIONS IMPOSED BY THE PROPERTY OWNER(S). ANY PROJECTIONS, OPINIONS OR ESTIMATES ARE SUBJECT TO UNCERTAINTY AND DO NOT SIGNIFY CURRENT OR FUTURE PROPERTY PERFORMANCE.