

FOR SUBLEASE

10828 NW AIRWORLD DRIVE
KANSAS CITY, MO



10828 NW AIRWORLD DRIVE

16,689 SF
FULLY FURNISHED SUBLEASE

4600 Madison Avenue, Suite 800
Kansas City, MO 64112
Main +1 816 2210 2200
Fax +1 913 273 1398
cushmanwakefield.com

FOR SUBLEASE

10828 NW Airworld Drive
Kansas City, MO



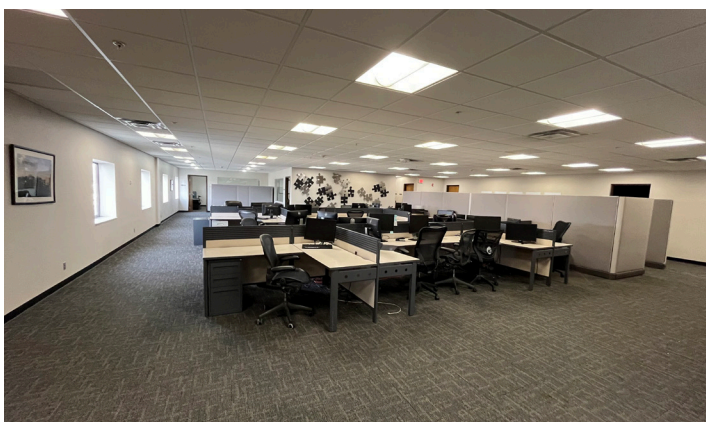
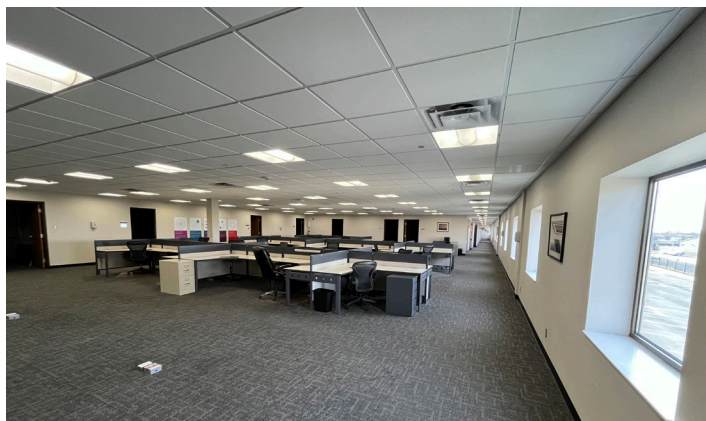
Looking for a turn-key office solution in a strategic Kansas City location? This 16,689 SF fully furnished office space at 10828 NW Airworld Drive offers an exceptional opportunity for a business seeking immediate occupancy with minimal setup costs. Located in the heart of the Northland submarket, this space provides easy access to I-29, KCI Airport, and major business hubs, making it an ideal choice for corporate offices, tech firms, healthcare companies, and back-office operations.

Positioned in a well-maintained, professional office park, this space offers a modern, collaborative work environment with high-quality furnishings, private offices, conference rooms, and open workspaces. The proximity to KCI Airport, major highways, and a strong labor pool makes this an excellent option for companies seeking both convenience and efficiency. With abundant parking, high-speed connectivity, and nearby amenities, this location ensures both employee satisfaction and business productivity.

- Lease term expires August 2, 2035
- Fully furnished 16,689 SF 2nd floor office space - move-in ready!
- Turnkey setup with private offices, kitchenette, conference rooms, and open workspace
- Sublease rate: \$10.00 PSF full service gross
- Ample parking for employees and visitors
- Secure, gated parking
- Strategic location near I-29 and KCI Airport for seamless connectivity
- Nearby amenities including dining, hotels, and business services

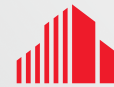
This is a rare opportunity to lease a high-quality, furnished office space in Kansas City's thriving Northland market. Don't miss the chance to position your business in a prime location with minimal upfront investment.

FOR SUBLEASE
10828 NW Airworld Drive | Kansas City, MO



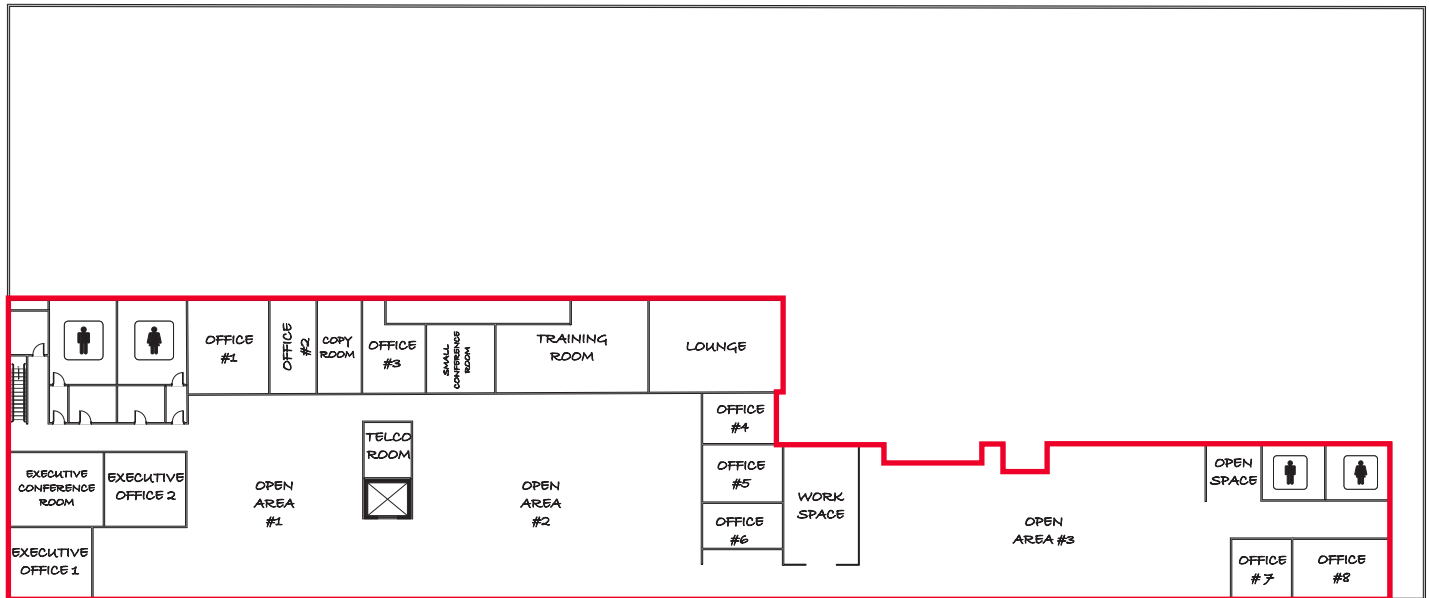
FOR SUBLEASE

10828 NW Airworld Drive | Kansas City, MO



CUSHMAN &
WAKEFIELD

Floor Plan



Contact

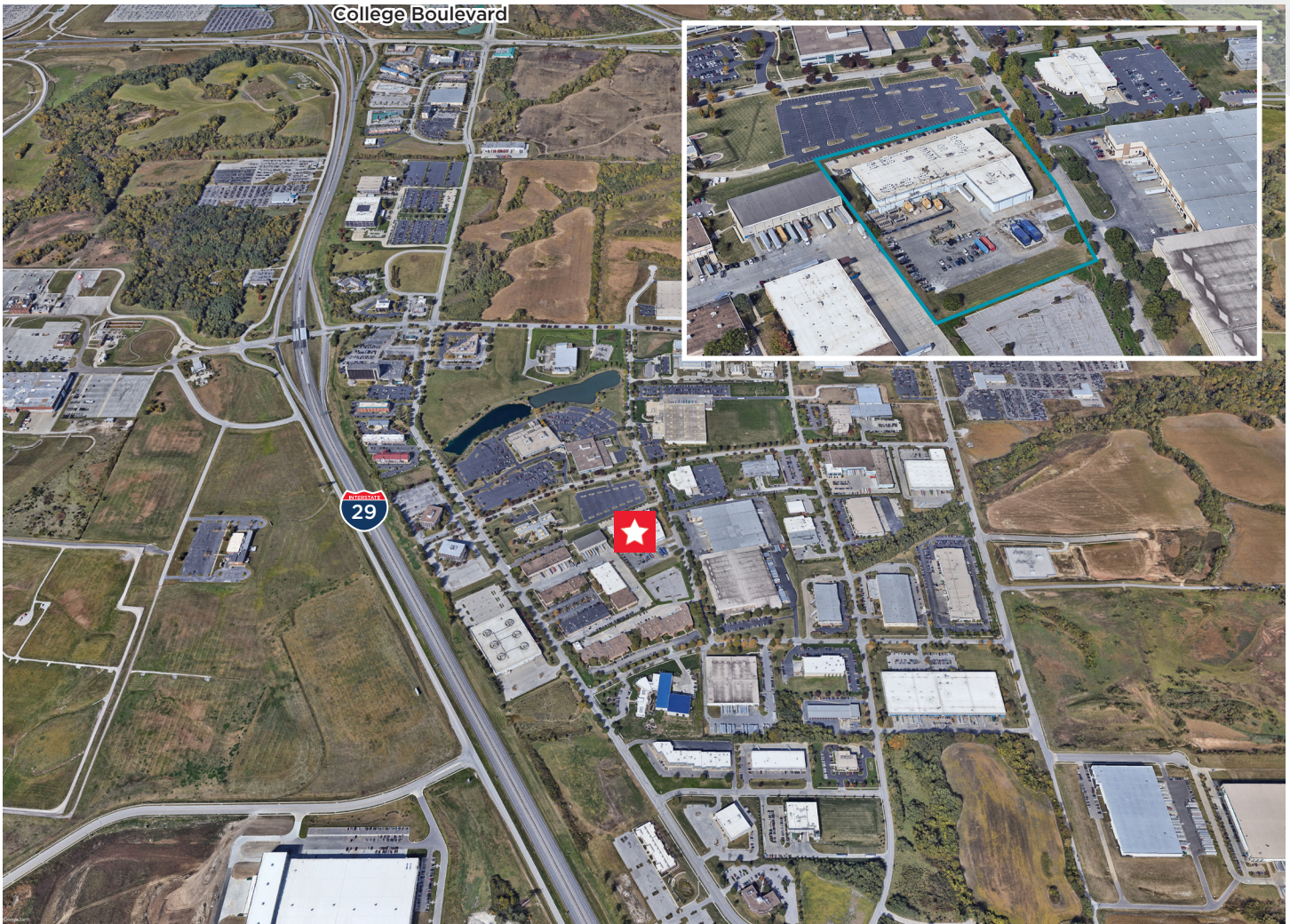
LEONARD POPPLEWELL
Director
+1 913 709 3623
leonard.popplewell@cushwake.com

4600 Madison Avenue, Suite 800
Kansas City, MO 64112
Main +1 816 221 2200
Fax +1 913 273 1398

FOR SUBLEASE
10828 NW Airworld Drive | Kansas City, MO



Location Aerial



Contact

LEONARD POPPLEWELL
Director
+1 913 709 3623
leonard.popplewell@cushwake.com

4600 Madison Avenue, Suite 800
Kansas City, MO 64112
Main +1 816 221 2200
Fax +1 913 273 1398

DISCLAIMER

©2025 Cushman & Wakefield. All rights reserved. This information has been obtained from sources believed to be reliable but has not been verified. NO WARRANTY OR REPRESENTATION, EXPRESS OR IMPLIED, IS MADE AS TO THE CONDITION OF THE PROPERTY (OR PROPERTIES) REFERENCED HEREIN OR AS TO THE ACCURACY OR COMPLETENESS OF THE INFORMATION CONTAINED HEREIN, AND SAME IS SUBMITTED SUBJECT TO ERRORS, OMISSIONS, CHANGE OF PRICE, RENTAL OR OTHER CONDITIONS, WITHDRAWAL WITHOUT NOTICE, AND TO ANY SPECIAL LISTING CONDITIONS IMPOSED BY THE PROPERTY OWNER(S). ANY PROJECTIONS, OPINIONS OR ESTIMATES ARE SUBJECT TO UNCERTAINTY AND DO NOT SIGNIFY CURRENT OR FUTURE PROPERTY PERFORMANCE.