

FOR LEASE

# 80 Driscoll Crs. Suite 200

MONCTON, NB  
6,750 SF AVAILABLE



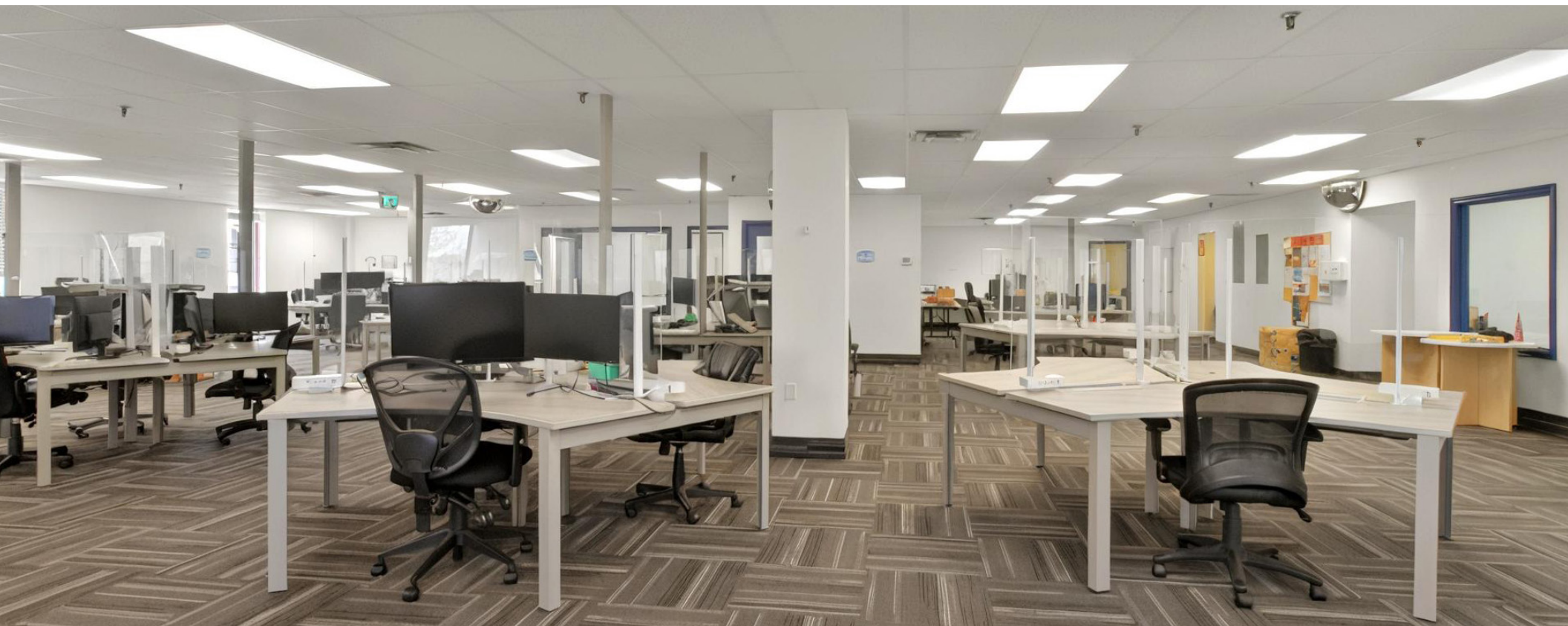


# Property Overview

**6,750 SF**  
Total size

**\$15.75 GROSS**  
Lease rate

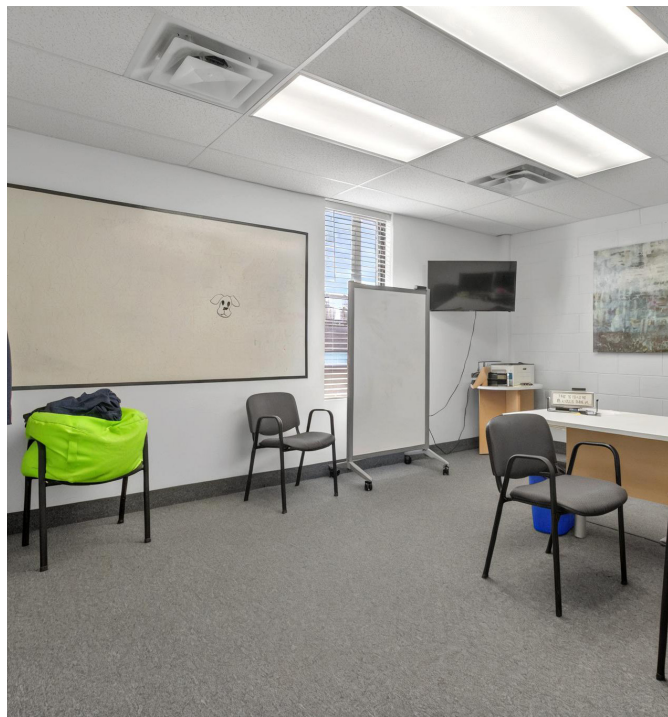
Located in the thriving Moncton Industrial Park, this recently updated second-floor walk-up office suite provides 6,750 square feet of well-maintained turnkey workspace. With shared on-site parking and easy access to the Trans-Canada Highway and Wheeler Boulevard, it's an ideal choice for companies seeking a professional and strategically located office in one of Moncton's most established industrial hubs.







**9+ FLEXIBLE OFFICE SPACES**







# Location Map

**7.2 km**  
TO TRANS-CANADA  
HIGHWAY

**5.6 km**  
TO RIVERVIEW

**11.1 km**  
TO CALEDONIA  
INDUSTRIAL PARK

**6.0 km**  
TO DOWNTOWN  
MONCTON

**1.6 km**  
TO WHEELER  
BOULEVARD



## SUITE 200

6,750 sf



3D VIRTUAL TOUR



**Floor  
Plan**

**FOR LEASE**

# 80 Driscoll Crs. Suite 200

MONCTON, NB  
6,750 SF AVAILABLE



©2026 Cushman & Wakefield. All rights reserved. The information contained in this communication is strictly confidential. This information has been obtained from sources believed to be reliable but has not been verified. NO WARRANTY OR REPRESENTATION, EXPRESS OR IMPLIED, IS MADE AS TO THE CONDITION OF THE PROPERTY (OR PROPERTIES) REFERENCED HEREIN OR AS TO THE ACCURACY OR COMPLETENESS OF THE INFORMATION CONTAINED HEREIN, AND SAME IS SUBMITTED SUBJECT TO ERRORS, OMISSIONS, CHANGE OF PRICE, RENTAL OR OTHER CONDITIONS, WITHDRAWAL WITHOUT NOTICE, AND TO ANY SPECIAL LISTING CONDITIONS IMPOSED BY THE PROPERTY OWNER(S). ANY PROJECTIONS, OPINIONS OR ESTIMATES ARE SUBJECT TO UNCERTAINTY AND DO NOT SIGNIFY CURRENT OR FUTURE PROPERTY PERFORMANCE.

**Adam MaGee**

**Managing Director NB/NL**

[amagee@cwatlantic.com](mailto:amagee@cwatlantic.com)

+1 506 872 2507

**Suzie Taylor**

**Commercial Real Estate Advisor**

[staylor@cwatlantic.com](mailto:staylor@cwatlantic.com)

+1 506 380 1777