



FOR LEASE | PRIME COMMERCIAL/LIGHT INDUSTRIAL/OFFICE BUILDING

Asking Rent: \$10.00 PSF Net | Additional Rent: \$4.98 PSF | Space Available: 1,780 SF

920 LEATHORNE STREET UNIT 8A

London, ON



**CUSHMAN &
WAKEFIELD**

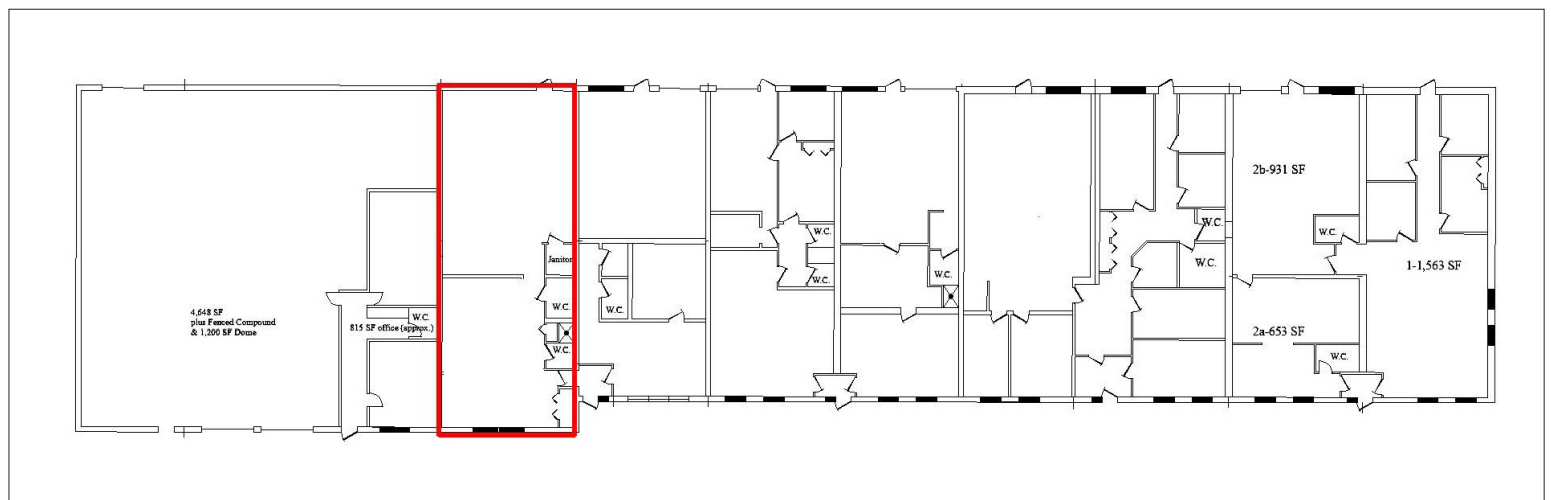
Southwestern Ontario

ABOUT THE PROPERTY

Prime commercial/light industrial/office building for lease in south central London.

UNIT	AVAILABLE SPACE	ASKING RENT	ADDITIONAL RENT
8A	1,780 SF	\$10.00 PSF Net	\$4.98 PSF (Est.)

- **Zoning:** RSC3/RSC5(9) - Permits a wide range of uses
- **Parking:** Plenty of spaces available on-site
- **Ceiling Height:** Approx. 15'-16'
- **Grade Level Door:** 1
- 100% finished office area, fully air conditioned with 2 washrooms
- Former dance studio space
- Utilities are separately metered in the tenant's name
- Located in close proximity to Victoria Hospital and Parkwood Institute
- London transit located at Adelaide Street South and Commissioners Road East



TYLER DESJARDINE
Sales Representative
519 438 5403
tyler.desjardine@cushwakeswo.com

CUSHMAN & WAKEFIELD
SOUTHWESTERN ONTARIO
850 Medway Park Dr, Suite 201
London, Ontario N6G 5C6
www.cushwakeswo.com

CUSHMAN & WAKEFIELD
Southwestern Ontario

©2025 Cushman & Wakefield Southwestern Ontario, Real Estate Brokerage, Independently Owned and Operated. A Member of the Cushman & Wakefield Alliance. This information has been obtained from sources believed to be reliable but has not been verified. No warranty or representation, express or implied, is made as to the condition of the property (or properties) referenced herein or as to the accuracy or completeness of the information contained herein, and same is submitted subject to errors, omissions, change of price, rental or other conditions, withdrawal without notice, and to any special listing conditions imposed by the property owner(s). Any projections, opinions or estimates are subject to uncertainty and do not signify current or future property performance. All rights reserved.