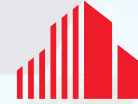


1,400 SF RETAIL SPACE FOR SUBLEASE

TURNKEY RETAIL SUBLEASE

3105 N. 108TH STREET
OMAHA, NE 68164



CUSHMAN &
WAKEFIELD

LUND
COMPANY



TURNKEY RETAIL SUBLEASE

3105 N. 108TH STREET | OMAHA, NE 68164

Property Description




Take advantage of this rare opportunity to sublease a recently renovated, turnkey retail space in the Maple 108 Shopping Center. Formerly a bar/lounge, the space was updated in 2024 and offers a modern, stylish, and inviting atmosphere, perfect for a variety of retail users. Located at the high-traffic intersection of 108th and Maple Street, this space offers excellent visibility and exposure seconds from the interstate.

Surround your business with a strong mix of national and local tenants, including Family Fare Supermarket, Taco Johns, Dollar General, and Boost Mobile. This vibrant location benefits from approximately 59,236 EADT at the intersection and 92,730 households within a 3-mile radius.

Property Details

Sublease Rate:	\$14.86 PSF NNN
NNN Expenses	\$6.72 PSF
Total Building Size:	98,574 SF
Total Available:	1,400 SF
Total Site Area:	10.16 AC
Zoning:	Commercial
Sublease Expiration:	May 31, 2027

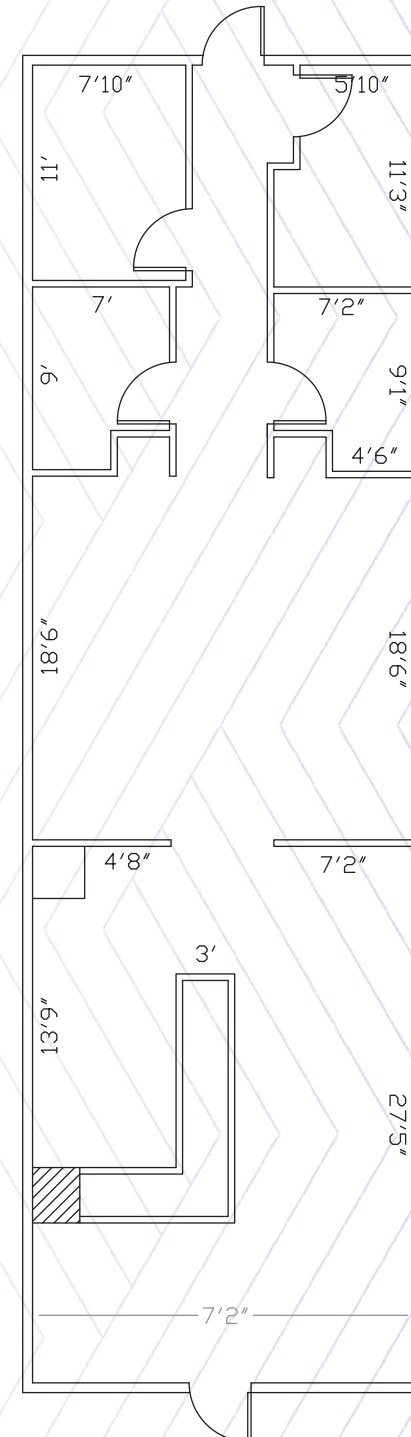
Neighborhood Demographics

	 POPULATION	 MEDIAN HOUSEHOLD INCOME	 NUMBER OF HOUSEHOLDS
1 Mile	13,417	\$56,768	6,936
3 Mile	100,335	\$69,886	47,444
5 mile	269,100	\$69,846	122,407



TURNKEY RETAIL SUBLEASE

3105 N. 108TH STREET | OMAHA, NE 68164

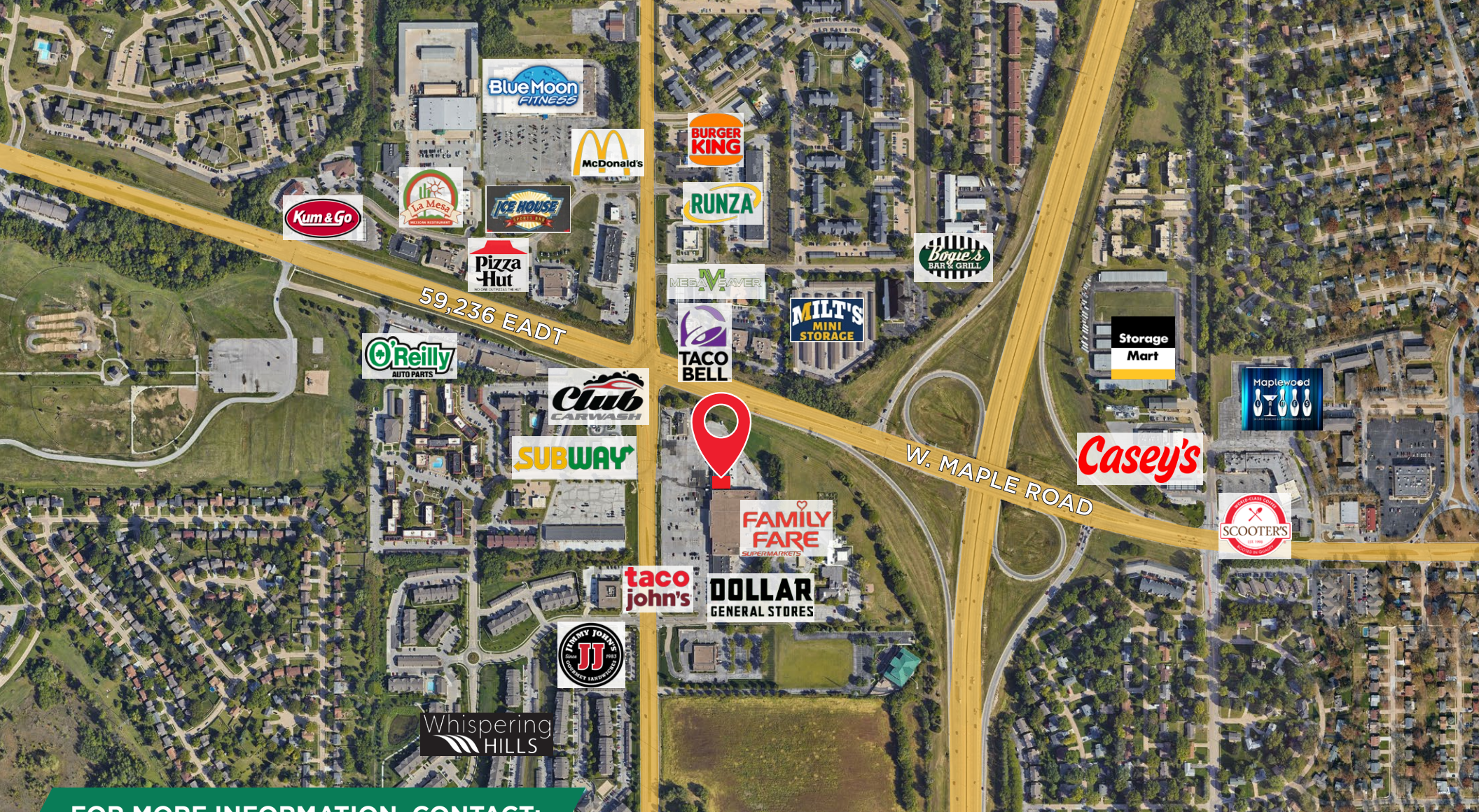


*Floor plans are approximate and for illustration purposes only.

TURNKEY RETAIL SUBLEASE

3105 N. 108TH STREET | OMAHA, NE 68164





FOR MORE INFORMATION, CONTACT:

JAMES BOULAY JR.
Associate
+1 402 594 5187
jj.boulay@lundco.com

NOAH LUDWICK
Associate
+1 402 548 4049
noah.ludwick@lundco.com

450 Regency Parkway, Suite 200
Omaha, NE 68114
+1 402 393 8811
lundco.com

Independently Owned and Operated / A Member of the Cushman & Wakefield Alliance

©2025 Cushman & Wakefield. All rights reserved. The information contained in this communication is strictly confidential. This information has been obtained from sources believed to be reliable but has not been verified. NO WARRANTY OR REPRESENTATION, EXPRESS OR IMPLIED, IS MADE AS TO THE CONDITION OF THE PROPERTY (OR PROPERTIES) REFERENCED HEREIN OR AS TO THE ACCURACY OR COMPLETENESS OF THE INFORMATION CONTAINED HEREIN, AND SAME IS SUBMITTED SUBJECT TO ERRORS, OMISSIONS, CHANGE OF PRICE, RENTAL OR OTHER CONDITIONS, WITHDRAWAL WITHOUT NOTICE, AND TO ANY SPECIAL LISTING CONDITIONS IMPOSED BY THE PROPERTY OWNER(S). ANY PROJECTIONS, OPINIONS OR ESTIMATES ARE SUBJECT TO UNCERTAINTY AND DO NOT SIGNIFY CURRENT OR FUTURE PROPERTY PERFORMANCE.



**CUSHMAN &
WAKEFIELD**

LUND
COMPANY