



FOR LEASE

18751-18891

DELL
FIVE I

LAKE
DRIVE
EAST

Chanhassen, MN 55317





PROPERTY HIGHLIGHTS

- Owned by Nicola Wealth
- 464,204 total SF in 9 buildings
- Single-story with plentiful parking
- Easy access to I-494 and Highway 212
- Endcap with good glassline
- Excellent Hwy 5 visibility
- Dock and grade level loading

Dell Five I : FEATURES

| | |
|-------------------------------------|--|
| ADDRESS | 18751-18891 Lake Drive East, Chanhassen, MN |
| BUILDING TOTAL SF | 110,223 SF |
| CLEAR HEIGHT | 18' |
| YEAR BUILT | 1999 |
| LEASE RATES | Negotiable |
| 2025 ESTIMATED TAX & CAM | \$3.50 PSF Tax \$2.50 PSF CAM \$6.00 PSF Total |
| POWER | 1,000A/600V Heavy |
| COLUMN SPACING | 30' x 40' |

VACANCIES

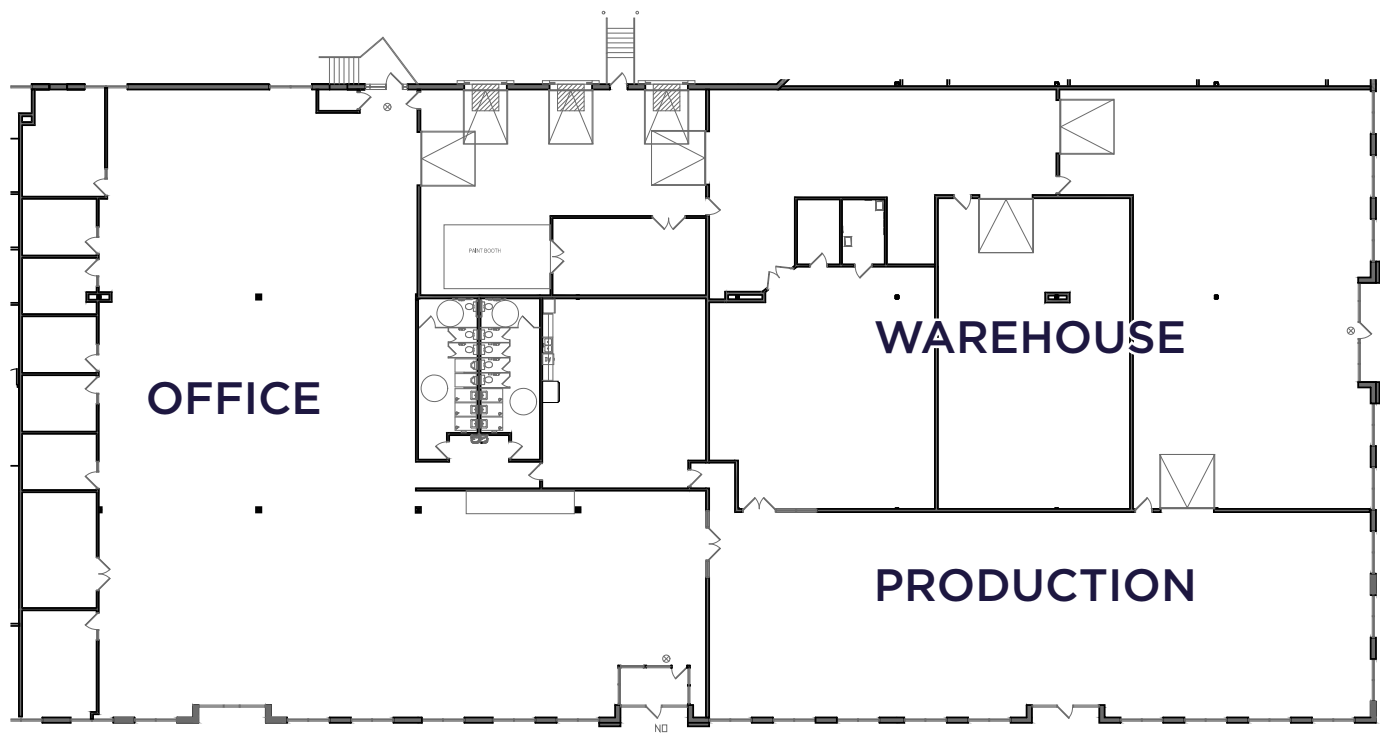
| | |
|---------------------|--|
| SUITE | 18781 |
| AVAILABILITY | 15,201 SF Office 15,201 SF Whse/Production 30,402 SF Total |

SUITE 18781

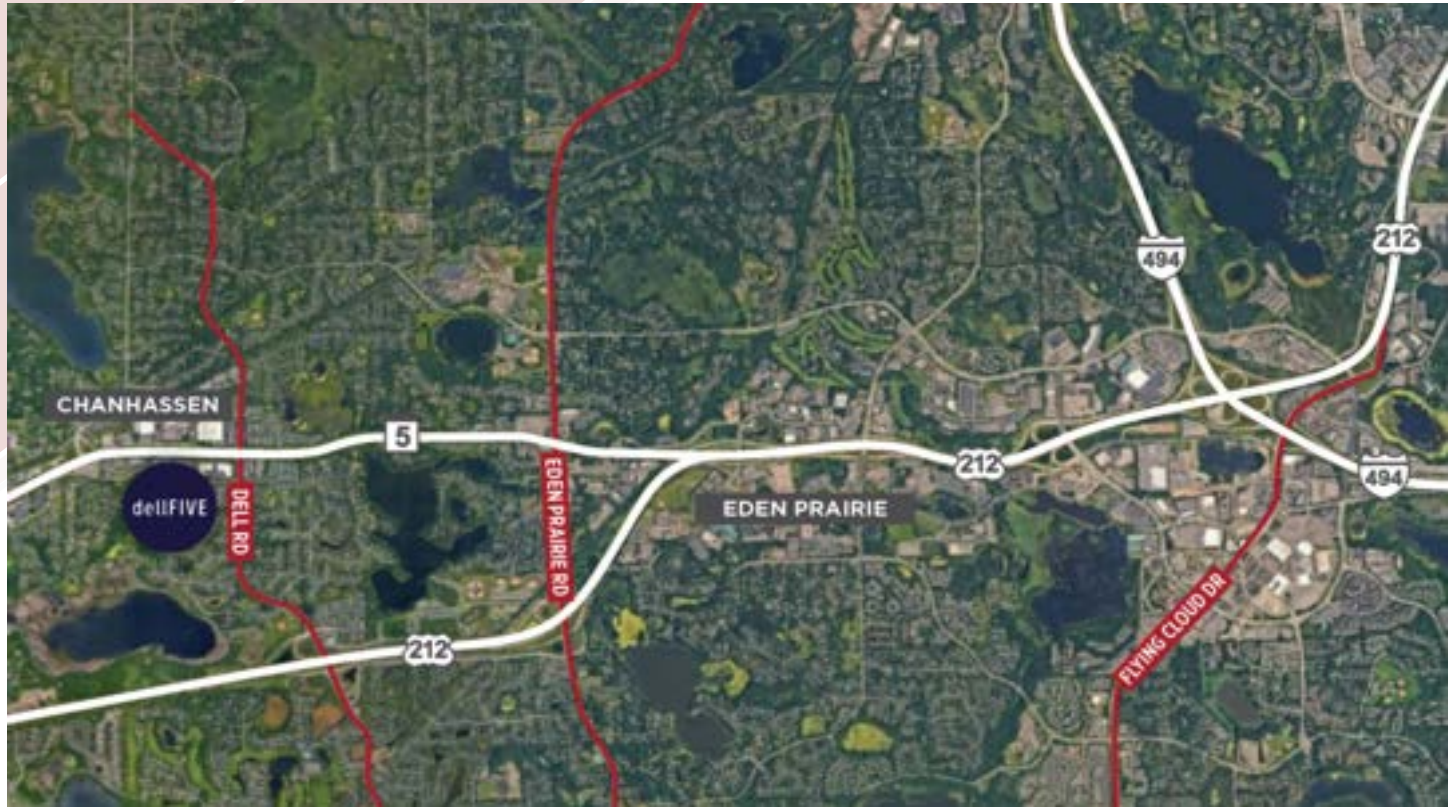
15,201 SF OFFICE

15,201 SF WAREHOUSE/PRODUCTION

30,402 SF TOTAL



AERIAL MAP



SITE MAP





FOR MORE INFORMATION, PLEASE CONTACT:

KRIS SMELTZER

Executive Managing Director
+1 952 837 8575
kris.smeltzer@cushwake.com

HUDSON BROTHEN

Executive Director
+1 952 893 8261
HUDSON.BROTHEN@cushwake.com

CUSHMAN & WAKEFIELD

3500 American Boulevard W, Suite 200
Minneapolis, MN 55431
cushmanwakefield.com



©2024 Cushman & Wakefield. All rights reserved. The information contained in this communication is strictly confidential. This information has been obtained from sources believed to be reliable but has not been verified. NO WARRANTY OR REPRESENTATION, EXPRESS OR IMPLIED, IS MADE AS TO THE CONDITION OF THE PROPERTY (OR PROPERTIES) REFERENCED HEREIN OR AS TO THE ACCURACY OR COMPLETENESS OF THE INFORMATION CONTAINED HEREIN, AND SAME IS SUBMITTED SUBJECT TO ERRORS, OMISSIONS, CHANGE OF PRICE, RENTAL OR OTHER CONDITIONS, WITHDRAWAL WITHOUT NOTICE, AND TO ANY SPECIAL LISTING CONDITIONS IMPOSED BY THE PROPERTY OWNER(S). ANY PROJECTIONS, OPINIONS OR ESTIMATES ARE SUBJECT TO UNCERTAINTY AND DO NOT SIGNIFY CURRENT OR FUTURE PROPERTY PERFORMANCE.