

# 1900 POINT WEST WAY

Sacramento, CA



**\$3.00 PER SQUARE FOOT TENANT RELOCATION ALLOWANCE AVAILABLE ON ALL NEW DEALS**

\*Minimum three year lease term

\*\*Relocation allowance promotion valid through June 30, 2025

## OFFICE SPACE FOR LEASE

**±468 TO ±10,349**

Rentable Square Feet (RSF)

### PROPERTY INFORMATION

- Asking Rate: \$1.75 PSF with full service
- Beautiful atrium office setting
- Across the street from Arden Fair Mall
- Excellent proximity to numerous retail & dining amenities
- Great access to Business 80 & Highway 160
- 4.0/1,000 SF parking ratio
- On-site common area conference room

### NEW RENOVATIONS

- Suite signage
- Building directories
- Interior and exterior paint
- Common-area lighting
- Suite entry doors
- Interior common-area carpet
- Building monument signage

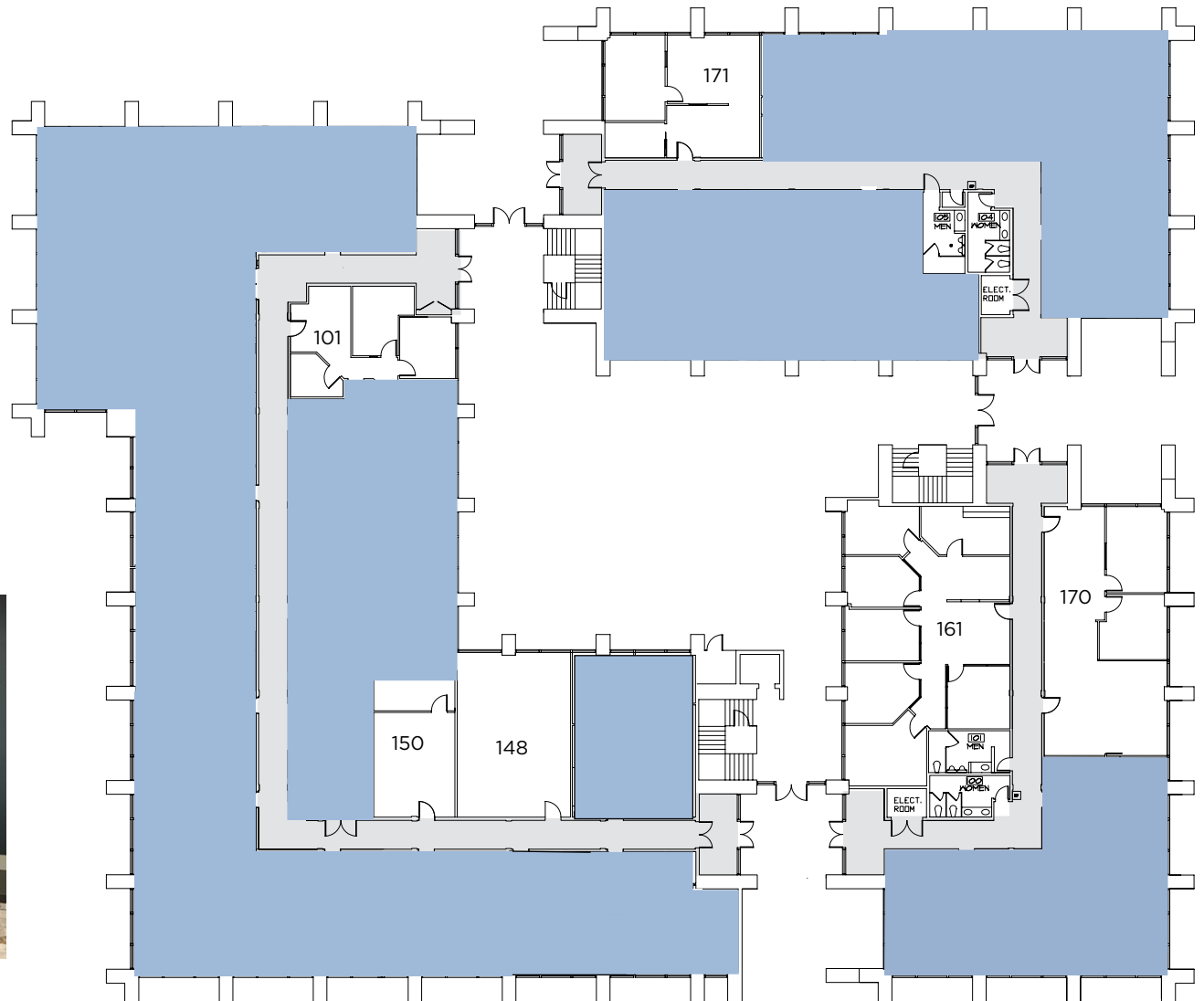
**Move-in-Ready Spec Suites Available**



# First Floor

SUITE	RENTABLE SQUARE FEET
101*	±612
148*	±803
150*	±468
161	±1,679
170**	±1,607
171	±805

\*Suites 148 and 150 can be combined for ±1,271 RSF  
 \*\*Suites 160 and 170 can be combined for ±2,092 RSF



**1900** POINT WEST WAY  
 Sacramento, CA

**KEVIN PARTINGTON**  
 Executive Managing Director  
 (916) 288.4807  
 kevin.partington@cushwake.com  
 CA License NO: 01199010

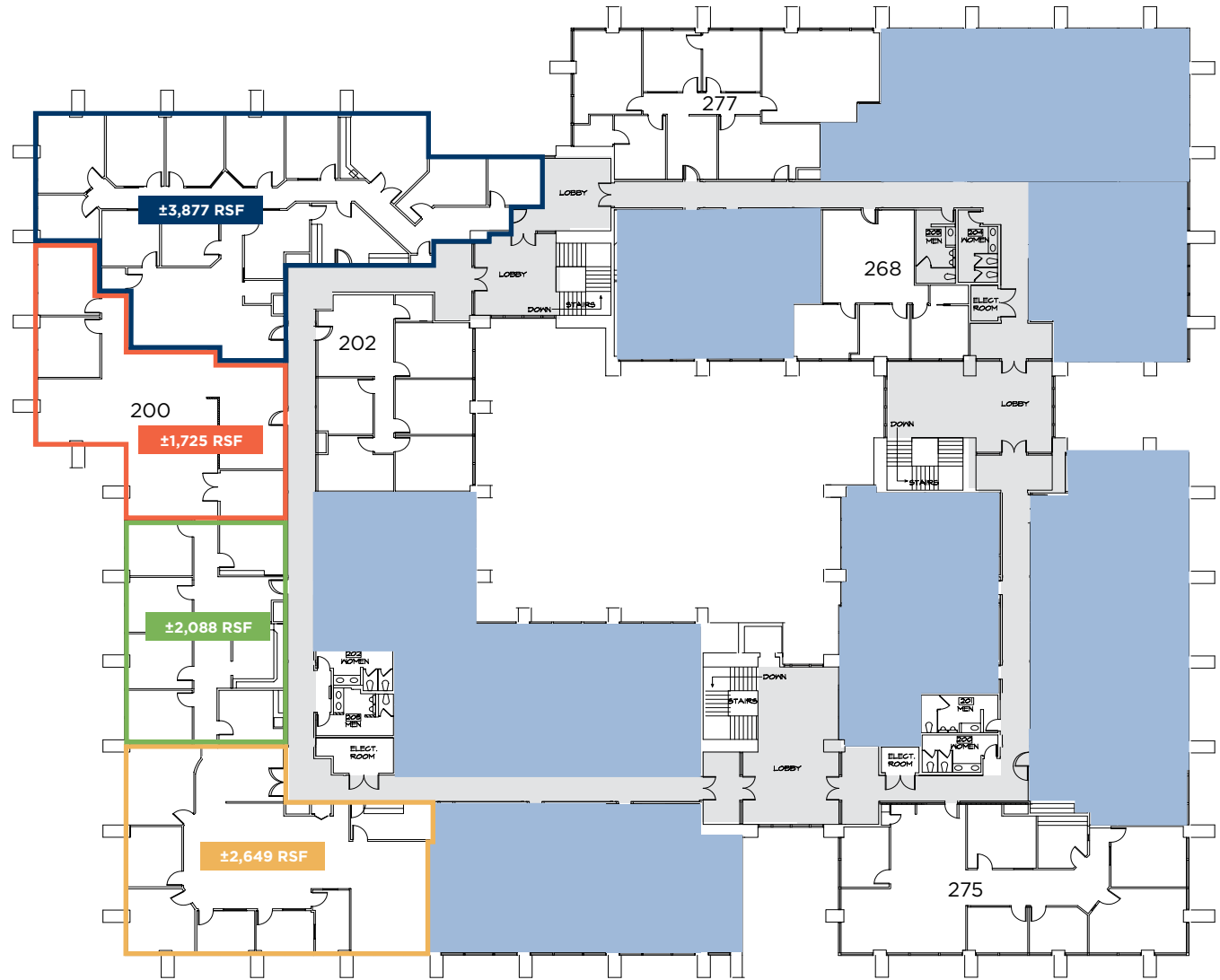
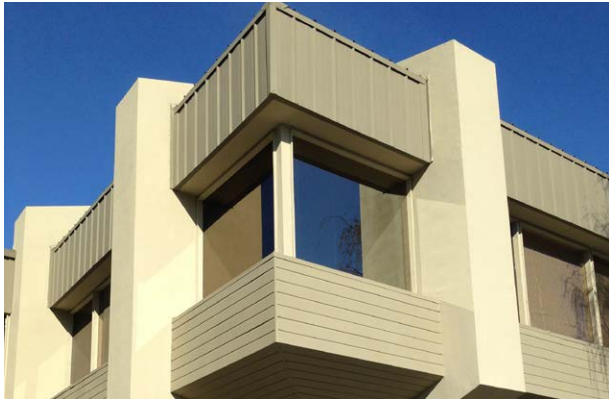
**SEAN MULLEN**  
 Managing Director  
 (916) 288.4811  
 sean.mullen@cushwake.com  
 CA License NO: 01845406

**KEVIN GOLDTHWAITE**  
 Director  
 (916) 403.1818  
 kevin.goldthwaite@cushwake.com  
 CA License NO: 01911862

# Second Floor

SUITE	RENTABLE SQUARE FEET
200	±10,349 (Divisible to 1,725 RSF)
202*	±1,443
268	±948
275	±2,331
277*	±1,982

\*Available October 2026



**1900** POINT WEST WAY  
Sacramento, CA

**KEVIN PARTINGTON**  
Executive Managing Director  
(916) 288.4807  
kevin.partington@cushwake.com  
CA License NO: 01199010

**SEAN MULLEN**  
Managing Director  
(916) 288.4811  
sean.mullen@cushwake.com  
CA License NO: 01845406

**KEVIN GOLDTHWAITE**  
Director  
(916) 403.1818  
kevin.goldthwaite@cushwake.com  
CA License NO: 01911862

**CUSHMAN & WAKEFIELD**  
cushmanwakefield.com



arden fair

FOOD  
DRINK

1900 POINT WEST WAY  
Sacramento, CA

Arden Way

Alta Arden Expy

Howe Ave

Arden Way

Exposition Blvd

## AMENITY-RICH LOCATION

Just minutes from I-80, Arden Fair Mall, and Howe Bout Arden, 1900 Point West Way is surrounded by dining, retail, and entertainment options – making it easy to grab lunch, meet clients, or unwind after work.

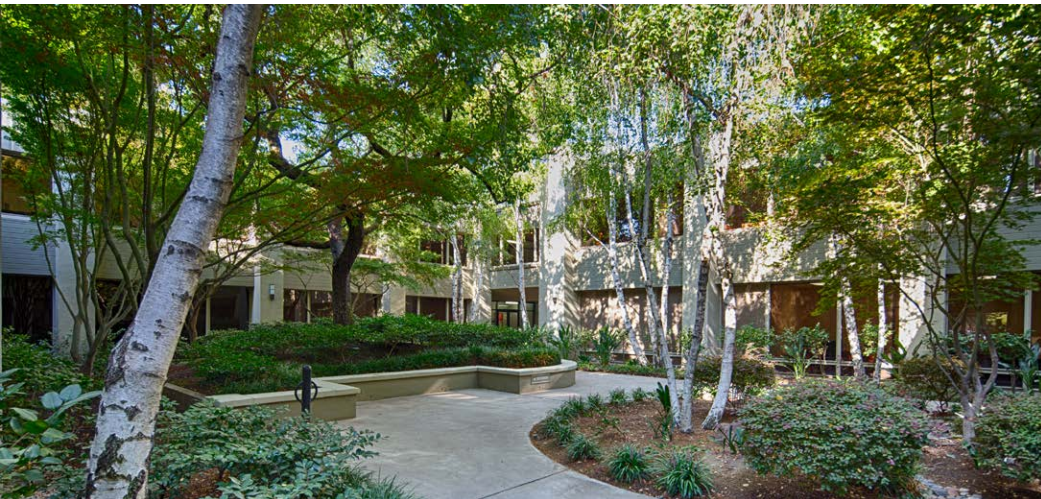


**KEVIN PARTINGTON**  
Executive Managing Director  
(916) 288.4807  
kevin.partington@cushwake.com  
CA License NO: 01199010

**SEAN MULLEN**  
Managing Director  
(916) 288.4811  
sean.mullen@cushwake.com  
CA License NO: 01845406

**KEVIN GOLDTHWAITE**  
Director  
(916) 403.1818  
kevin.goldthwaite@cushwake.com  
CA License NO: 01911862

**CUSHMAN & WAKEFIELD**  
cushmanwakefield.com



# 1900 POINT WEST WAY Sacramento, CA

©2026 Cushman & Wakefield. All rights reserved. The information contained in this communication is strictly confidential. This information has been obtained from sources believed to be reliable but has not been verified. NO WARRANTY OR REPRESENTATION, EXPRESS OR IMPLIED, IS MADE AS TO THE CONDITION OF THE PROPERTY (OR PROPERTIES) REFERENCED HEREIN OR AS TO THE ACCURACY OR COMPLETENESS OF THE INFORMATION CONTAINED HEREIN, AND SAME IS SUBMITTED SUBJECT TO ERRORS, OMISSIONS, CHANGE OF PRICE, RENTAL OR OTHER CONDITIONS, WITHDRAWAL WITHOUT NOTICE, AND TO ANY SPECIAL LISTING CONDITIONS IMPOSED BY THE PROPERTY OWNER(S). ANY PROJECTIONS, OPINIONS OR ESTIMATES ARE SUBJECT TO UNCERTAINTY AND DO NOT SIGNIFY CURRENT OR FUTURE PROPERTY PERFORMANCE. COE-PM-West-04.15.2026

**KEVIN PARTINGTON**  
Executive Managing Director  
(916) 288.4807  
kevin.partington@cushwake.com  
CA License NO: 01199010

**SEAN MULLEN**  
Managing Director  
(916) 288.4811  
sean.mullen@cushwake.com  
CA License NO: 01845406

**KEVIN GOLDTHWAITE**  
Director  
(916) 403.1818  
kevin.goldthwaite@cushwake.com  
CA License NO: 01911862

 **CUSHMAN & WAKEFIELD**  
cushmanwakefield.com