

1900 POINT WEST WAY

Sacramento, CA



\$3.00 PER SQUARE FOOT TENANT RELOCATION ALLOWANCE AVAILABLE ON ALL NEW DEALS

*Minimum three year lease term

**Relocation allowance promotion valid through June 30, 2026

OFFICE SPACE FOR LEASE

±468 TO ±10,349

Rentable Square Feet (RSF)

PROPERTY INFORMATION

- Asking Rate: \$1.75 PSF with full service
- Beautiful atrium office setting
- Across the street from Arden Fair Mall
- Excellent proximity to numerous retail & dining amenities
- Great access to Business 80 & Highway 160
- 4.0/1,000 SF parking ratio
- On-site common area conference room

NEW RENOVATIONS

- Suite signage
- Building directories
- Interior and exterior paint
- Common-area lighting
- Suite entry doors
- Interior common-area carpet
- Building monument signage

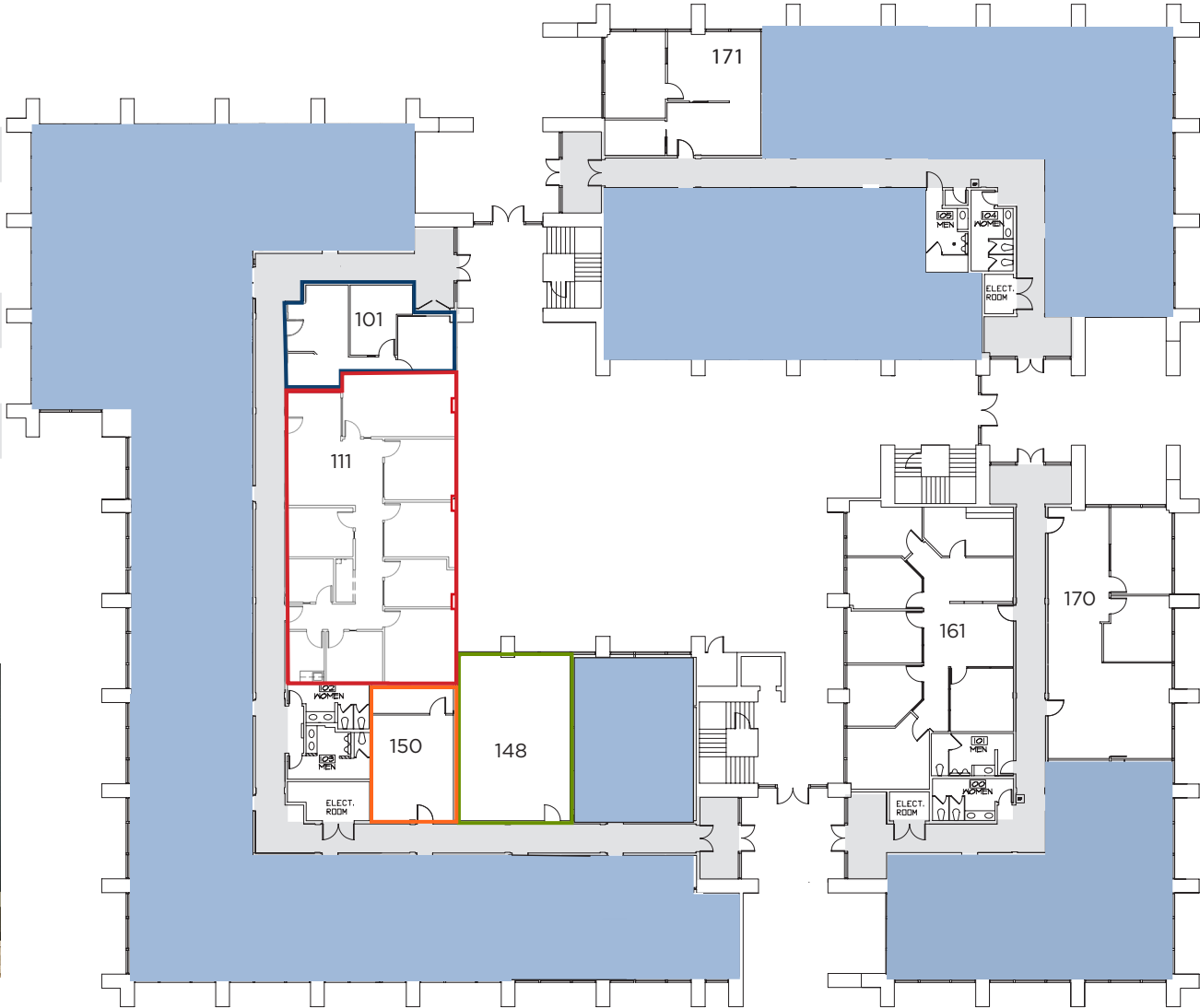
Move-in-Ready Spec Suites Available



First Floor

SUITE	RENTABLE SQUARE FEET
101*	±612
111*	±2,069
148**	±803
150**	±468
161	±1,679
170	±1,607
171	±805

*Suites 101 and 111 can be combined for ±2,681 RSF
 **Suites 148 and 150 can be combined for ±1,271 RSF



1900 POINT WEST WAY
 Sacramento, CA

KEVIN PARTINGTON
 Executive Managing Director
 (916) 288.4807
 kevin.partington@cushwake.com
 CA License NO: 01199010

SEAN MULLEN
 Managing Director
 (916) 288.4811
 sean.mullen@cushwake.com
 CA License NO: 01845406

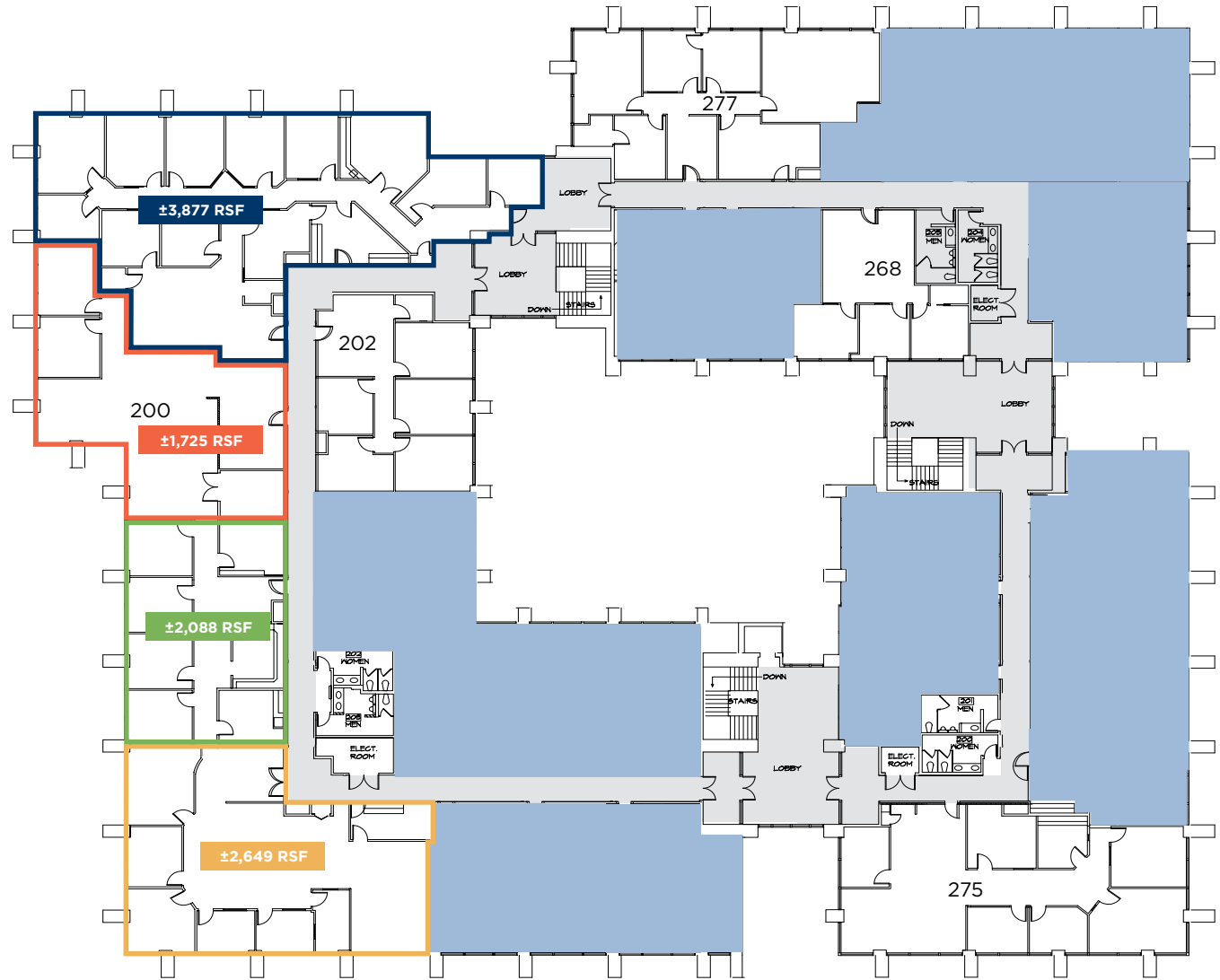
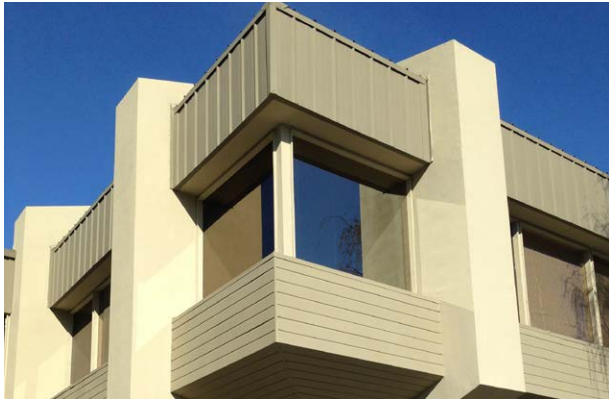
KEVIN GOLDTHWAITE
 Director
 (916) 403.1818
 kevin.goldthwaite@cushwake.com
 CA License NO: 01911862



Second Floor

SUITE	RENTABLE SQUARE FEET
200	±10,349 (Divisible to 1,725 RSF)
202*	±1,443
268	±948
275	±2,331
277*	±1,982

*Available October 2026



1900 POINT WEST WAY
Sacramento, CA

KEVIN PARTINGTON
Executive Managing Director
(916) 288.4807
kevin.partington@cushwake.com
CA License NO: 01199010

SEAN MULLEN
Managing Director
(916) 288.4811
sean.mullen@cushwake.com
CA License NO: 01845406

KEVIN GOLDTHWAITE
Director
(916) 403.1818
kevin.goldthwaite@cushwake.com
CA License NO: 01911862

CUSHMAN & WAKEFIELD
cushmanwakefield.com



arden fair

FOOD
DRINK

1900 POINT WEST WAY
Sacramento, CA

Arden Way

Alta Arden Expy

Howe Ave

Arden Way

Exposition Blvd

AMENITY-RICH LOCATION

Just minutes from I-80, Arden Fair Mall, and Howe Bout Arden, 1900 Point West Way is surrounded by dining, retail, and entertainment options – making it easy to grab lunch, meet clients, or unwind after work.

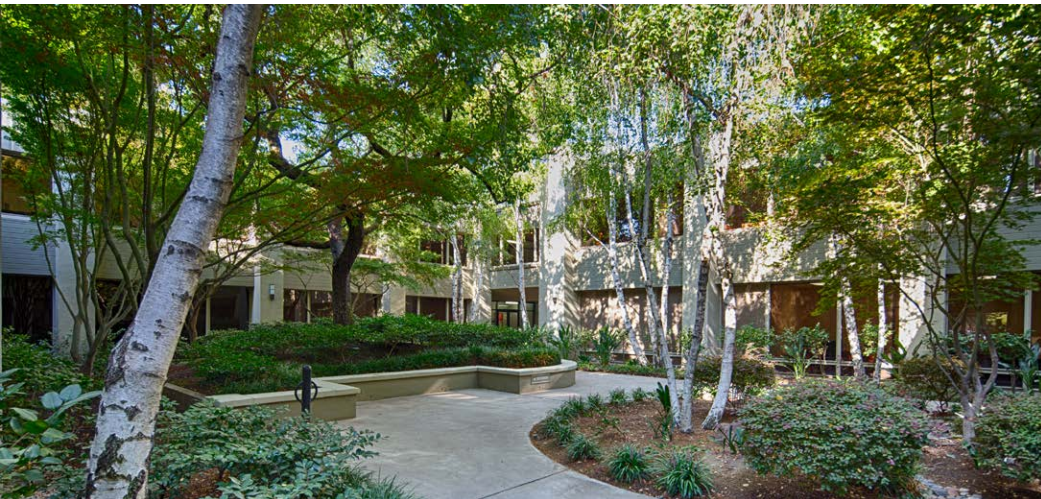


KEVIN PARTINGTON
Executive Managing Director
(916) 288.4807
kevin.partington@cushwake.com
CA License NO: 01199010

SEAN MULLEN
Managing Director
(916) 288.4811
sean.mullen@cushwake.com
CA License NO: 01845406

KEVIN GOLDTHWAITE
Director
(916) 403.1818
kevin.goldthwaite@cushwake.com
CA License NO: 01911862

CUSHMAN & WAKEFIELD
cushmanwakefield.com



1900 POINT WEST WAY Sacramento, CA

©2026 Cushman & Wakefield. All rights reserved. The information contained in this communication is strictly confidential. This information has been obtained from sources believed to be reliable but has not been verified. NO WARRANTY OR REPRESENTATION, EXPRESS OR IMPLIED, IS MADE AS TO THE CONDITION OF THE PROPERTY (OR PROPERTIES) REFERENCED HEREIN OR AS TO THE ACCURACY OR COMPLETENESS OF THE INFORMATION CONTAINED HEREIN, AND SAME IS SUBMITTED SUBJECT TO ERRORS, OMISSIONS, CHANGE OF PRICE, RENTAL OR OTHER CONDITIONS, WITHDRAWAL WITHOUT NOTICE, AND TO ANY SPECIAL LISTING CONDITIONS IMPOSED BY THE PROPERTY OWNER(S). ANY PROJECTIONS, OPINIONS OR ESTIMATES ARE SUBJECT TO UNCERTAINTY AND DO NOT SIGNIFY CURRENT OR FUTURE PROPERTY PERFORMANCE. COE-PM-West-04.15.2026

KEVIN PARTINGTON
Executive Managing Director
(916) 288.4807
kevin.partington@cushwake.com
CA License NO: 01199010

SEAN MULLEN
Managing Director
(916) 288.4811
sean.mullen@cushwake.com
CA License NO: 01845406

KEVIN GOLDTHWAITE
Director
(916) 403.1818
kevin.goldthwaite@cushwake.com
CA License NO: 01911862

 **CUSHMAN & WAKEFIELD**
cushmanwakefield.com