



FOR SALE

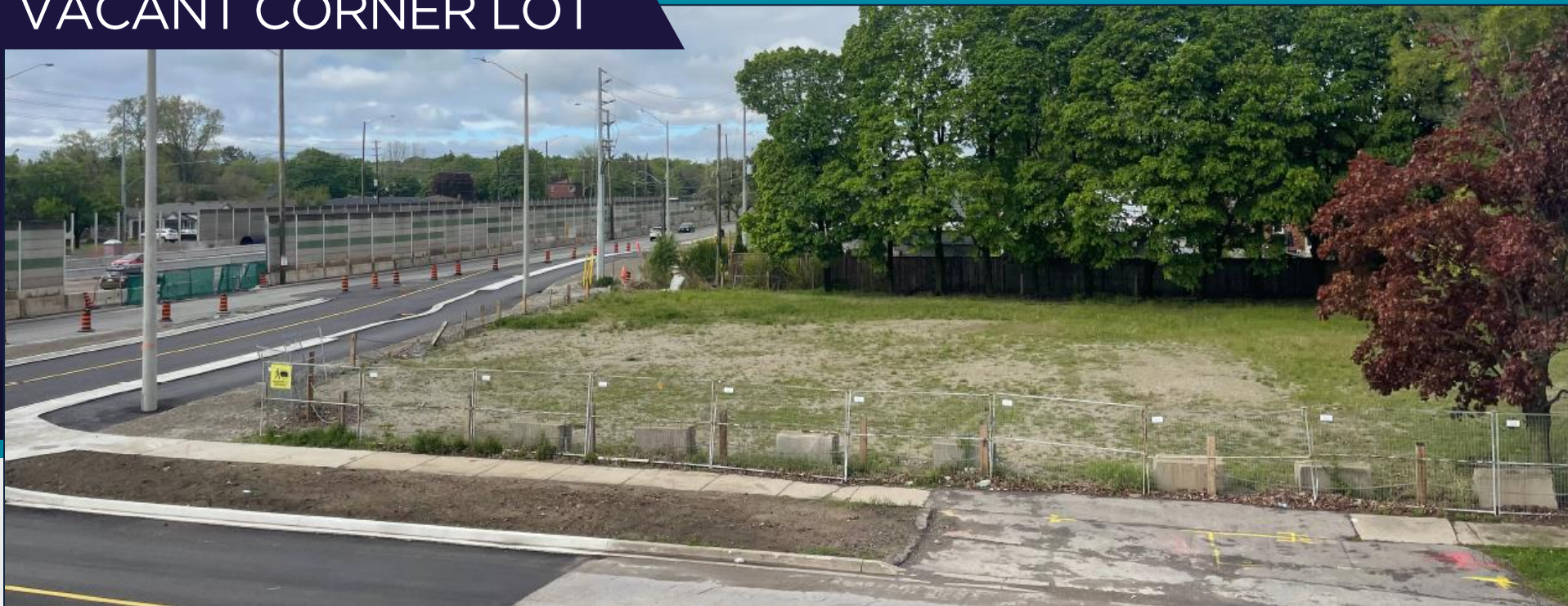
999 North Service Road

MISSISSAUGA, ONTARIO



Vacant Commercial Land
.545 Acres Available

VACANT CORNER LOT



PROPERTY FEATURES

Prime vacant commercial lot located on a high-visibility corner in Mississauga, Ontario. The site features a clean, fully paved landscape, offering a ready-to-develop opportunity in a growing and vibrant area.

Located across from a busy retail mall. Quick access to the QEW, Dixie Outlet Mall and many amenities.

Zoned for Motor Vehicle Commercial uses, it presents an investment opportunity for businesses seeking a strategic and accessible location.



.545
Lot Size
(Acres)



**C5-3 and
RL**
Zoning

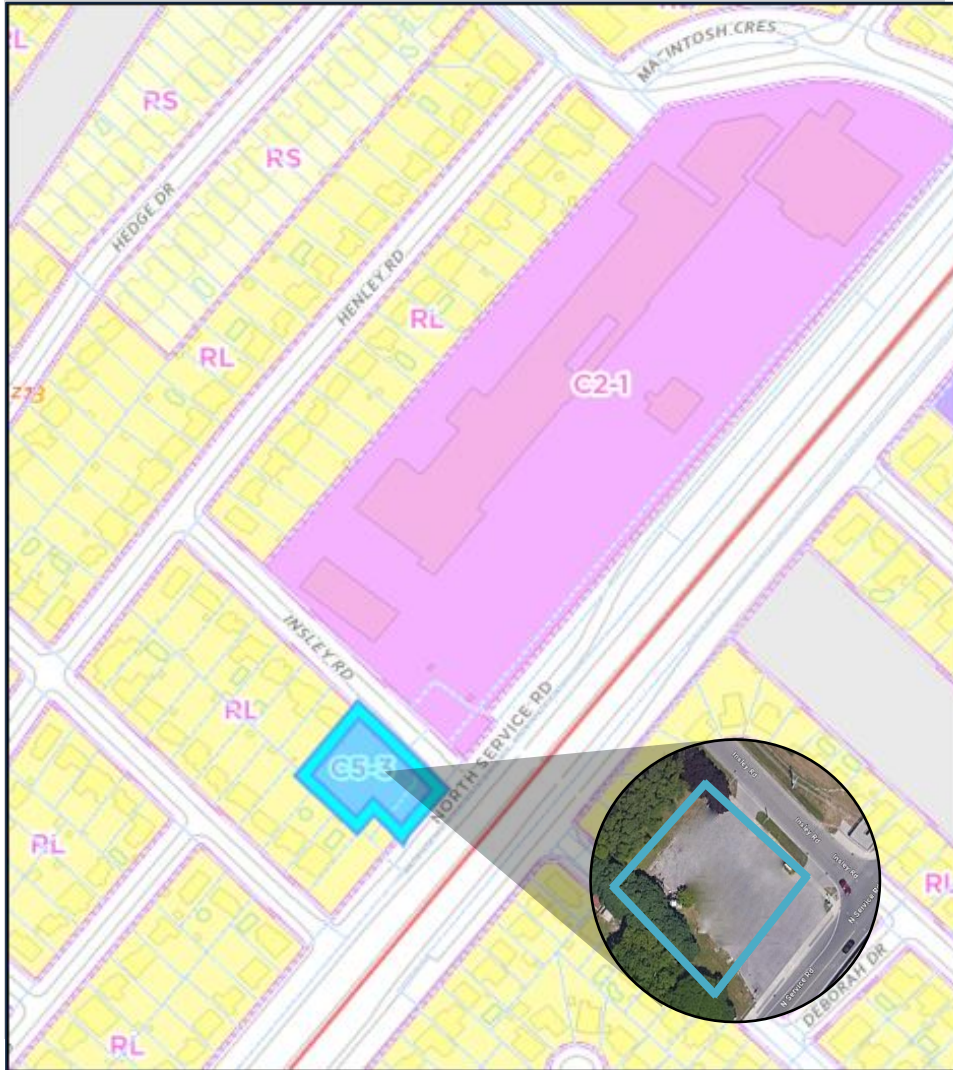


\$37,948.68
Taxes
(2024)



\$2,400,000
Asking
Price

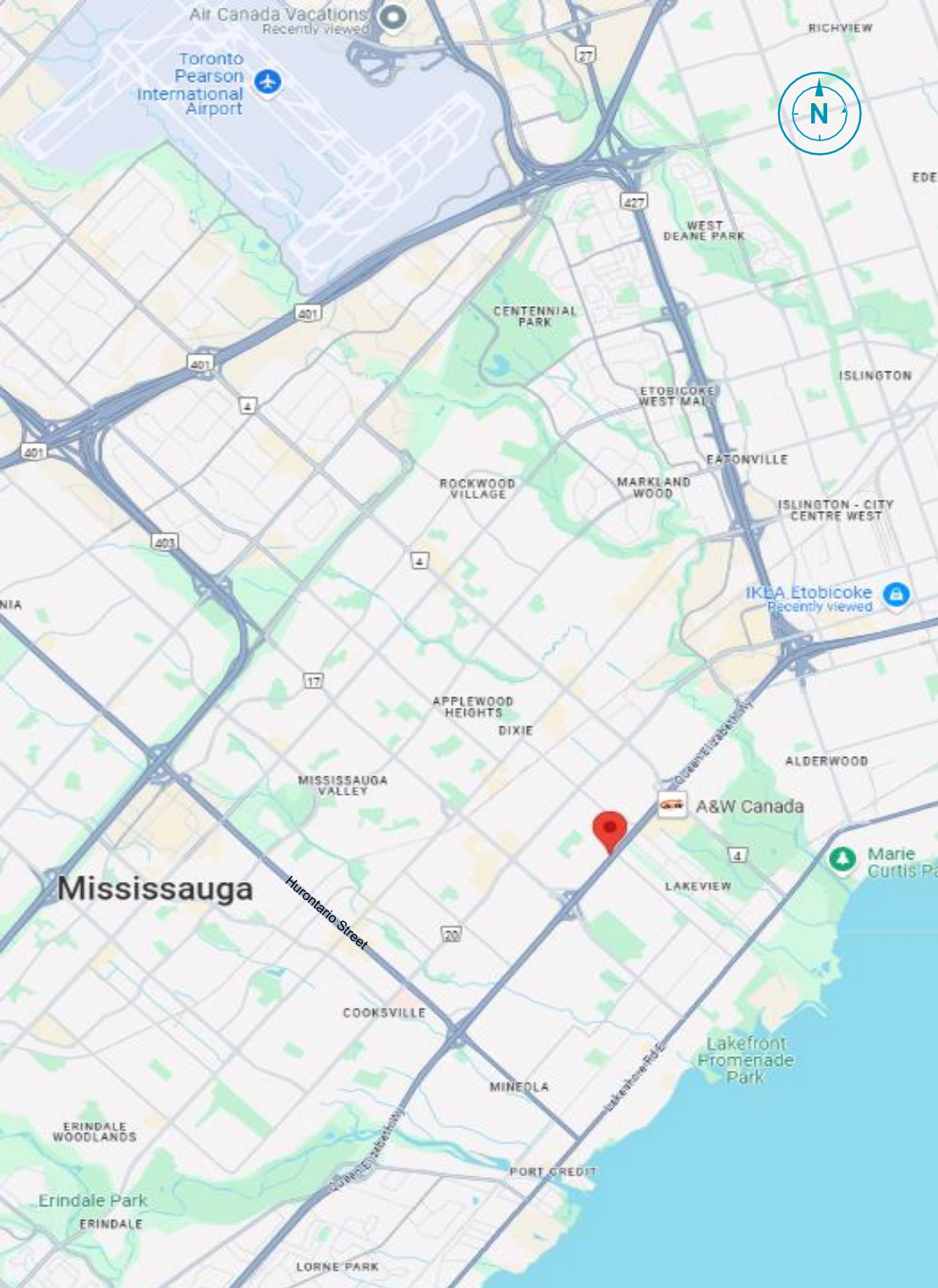
ZONING MAP / SITE PLAN



PIN: 133421924

LEGAL DESCRIPTION:

LOT 48 PLAN 520 TORONTO; LOT 49 PLAN 520 TORONTO; LOT 50 PLAN 520 TORONTO; BLOCK C PLAN 520 TORONTO, SAVE AND EXCEPT PARTS 1, 2, 3 & 4 ON EXPROPRIATION PLAN PR3519402 SUBJECT TO AN EASEMENT AS IN TT88750 CITY OF MISSISSAUGA



AGENT CONTACT INFORMATION

NANCY CARTER*

Senior Vice President

+1 905 501 6410

nancy.carter@cushwake.com

GREG LOFFREE*

Senior Vice President

+1 905 501 6447

greg.loffree@cushwake.com

DENVER CARTER*

Associate

+1 905 501 6418

denver.carter@cushwake.com

1 Prologis Blvd

Suite 300

Mississauga, ON

L5W 0G2

cushmanwakefield.ca



©2025 Cushman & Wakefield. All rights reserved. The information contained in this communication is strictly confidential. This information has been obtained from sources believed to be reliable but has not been verified. NO WARRANTY OR REPRESENTATION, EXPRESS OR IMPLIED, IS MADE AS TO THE CONDITION OF THE PROPERTY (OR PROPERTIES) REFERENCED HEREIN OR AS TO THE ACCURACY OR COMPLETENESS OF THE INFORMATION CONTAINED HEREIN, AND SAME IS SUBMITTED SUBJECT TO ERRORS, OMISSIONS, CHANGE OF PRICE, RENTAL OR OTHER CONDITIONS, WITHDRAWAL WITHOUT NOTICE, AND TO ANY SPECIAL LISTING CONDITIONS IMPOSED BY THE PROPERTY OWNER(S). ANY PROJECTIONS, OPINIONS OR ESTIMATES ARE SUBJECT TO UNCERTAINTY AND DO NOT SIGNIFY CURRENT OR FUTURE PROPERTY PERFORMANCE.

*Sales Representative