

47522

GALLEON DRIVE

PLYMOUTH, MI

**AUTOMATED
PRECISION**
MICHIGAN PRECISION CENTER

FOR LEASE
13,507 SF

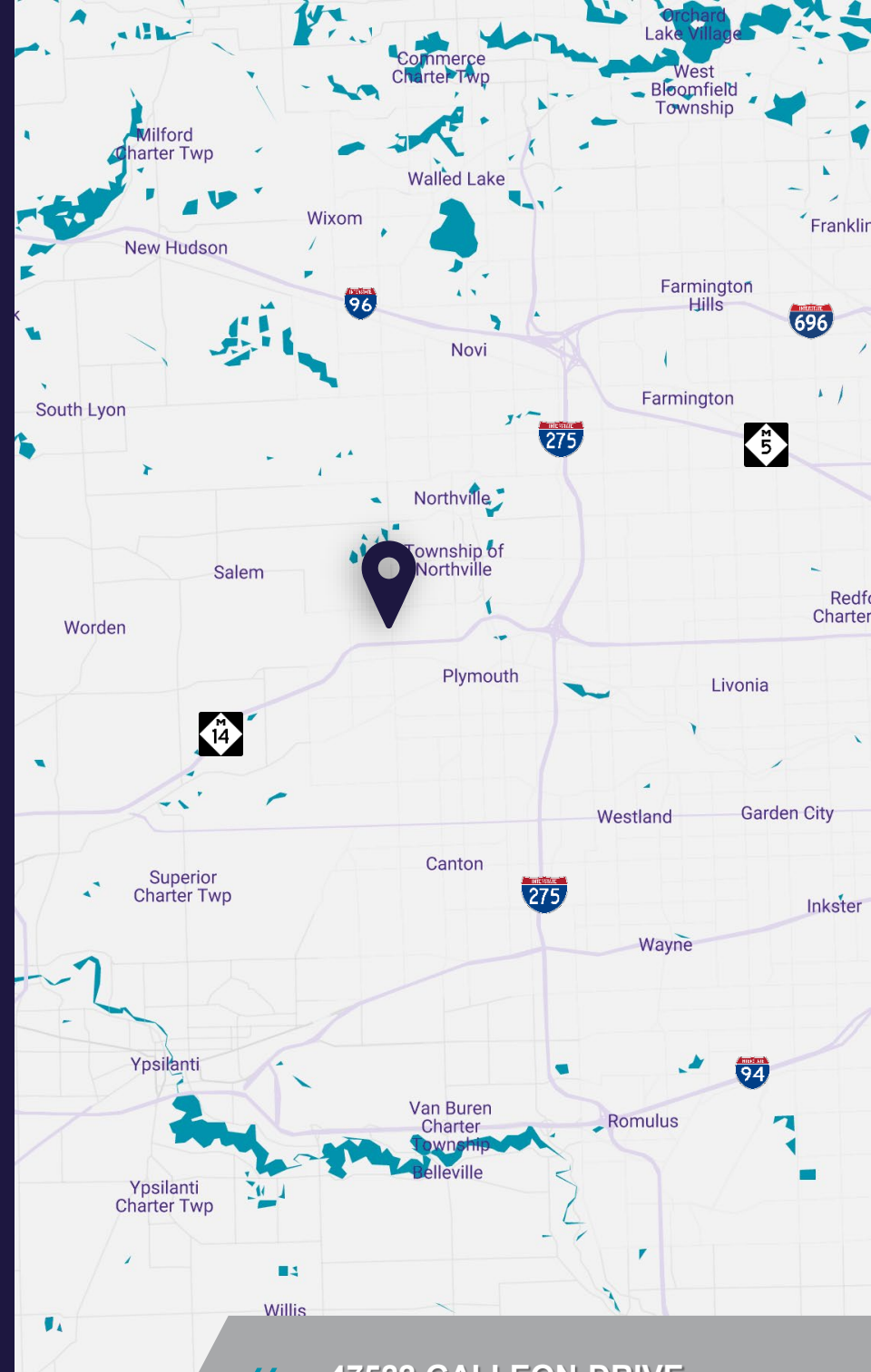
Available February 2025



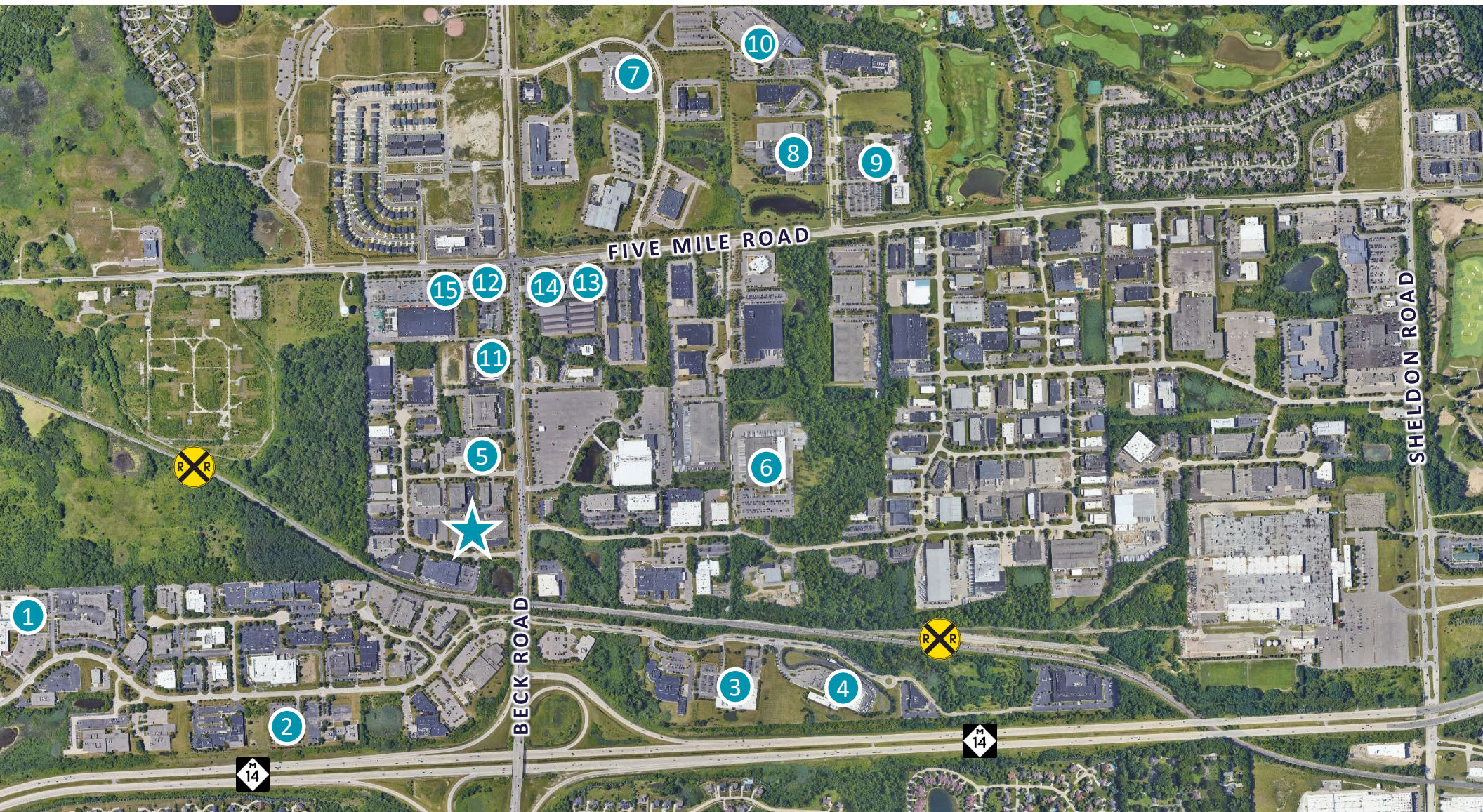
**CUSHMAN &
WAKEFIELD**

// PROPERTY DETAILS

Building Size:	13,507 SF
Office Size:	± 2,300 SF
Site Area:	0.90 Acres
Year Built:	1990
Parcel ID:	78-005-01-0022-302
Clear Height:	20'
Drive-Ins:	Two (2) 12'x14'
Truckwells:	One (1) possible
Column Spacing:	60' clear span bays
Auto Parking:	36 surface spaces
Construction:	Masonry & steel
Roof:	TPO (2018)
Lighting:	LED
Power:	1000amp/480v/3p
Sprinklers:	No
HVAC:	100%
Air Lines:	No
Floor Thickness:	6"
Zoning:	IND: Industrial
Lease Rate:	\$8.45/SF NNN
Availability:	February 2025




47522 GALLEON DRIVE
PLYMOUTH, MICHIGAN



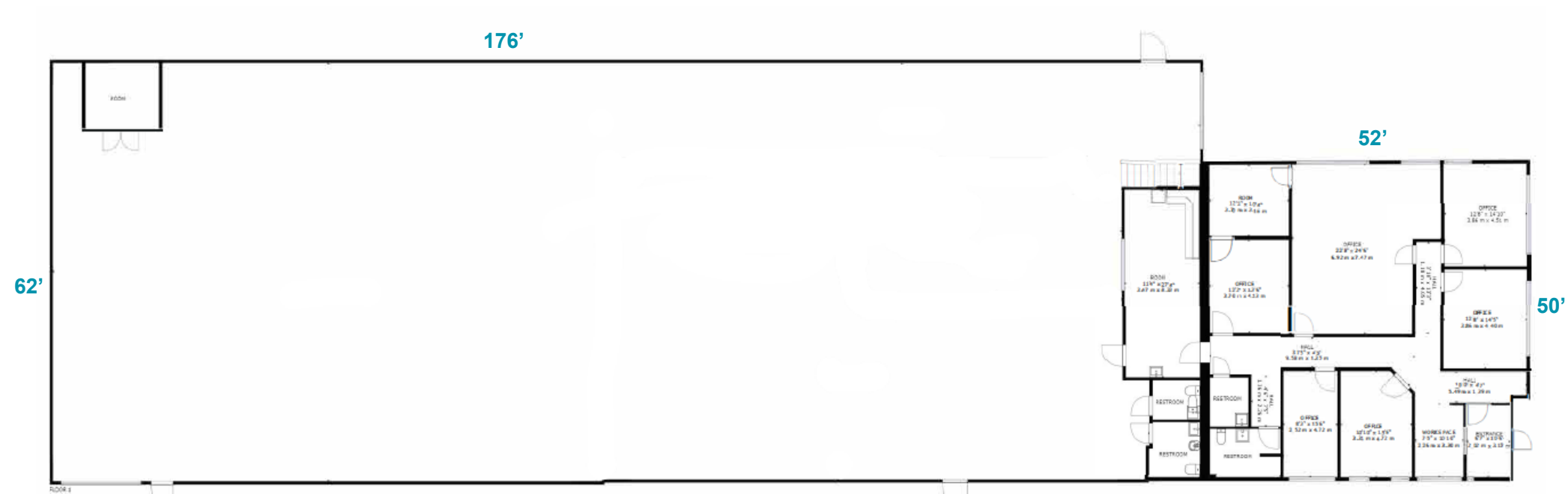
1. Adient
2. Brembo North America
3. Mobis
4. Isuzu
5. USPS

6. Magna
7. Tenneco
8. Mitsubishi Electric Automotive America
9. Aisin Technical of America
10. ZF North America

11. Buddy's Pizza / Starbucks
12. Panera Bread
13. Red Olive Restaurant
14. Detroit Ham & Corned Beef
15. Taco Bell

 47522 Galleon Drive

// FLOOR PLAN



SIZES AND DIMENSIONS ARE APPROXIMATE,
ACTUAL MAY VARY.

47522

GALLEON DRIVE

PLYMOUTH, MI



// CONTACT

TONY AVENDT
Executive Director
+1 248 358 6115
tony.avendt@cushwake.com

CONNER SALSBERY
Director
+1 248 358 6114
conner.salsberry@cushwake.com



©2024 Cushman & Wakefield. All rights reserved. The material in this presentation has been prepared solely for information purposes, and is strictly confidential. Any disclosure, use, copying or circulation of this presentation (or the information contained within it) is strictly prohibited, unless you have obtained Cushman & Wakefield's prior written consent. The views expressed in this presentation are the views of the author and do not necessarily reflect the views of Cushman & Wakefield. Neither this presentation nor any part of it shall form the basis of, or be relied upon in connection with any offer, or act as an inducement to enter into any contract or commitment whatsoever. NO REPRESENTATION OR WARRANTY IS GIVEN, EXPRESS OR IMPLIED, AS TO THE ACCURACY OF THE INFORMATION CONTAINED WITHIN THIS PRESENTATION, AND CUSHMAN & WAKEFIELD IS UNDER NO OBLIGATION TO SUBSEQUENTLY CORRECT IT IN THE EVENT OF ERRORS.