

CASSINELLI SQUARE

11360-11500 Princeton Pike, Cincinnati, OH

Retail Strip Center in Tri-County / For Lease



Rob Murphy / Director / rob.p.murphy@cushwake.com / +1 513 763 3033
Clare Holtmeier / Associate / clare.holtmeier@cushwake.com / +1 513 322 0776

**WE ARE
THE CENTER
OF RETAIL**

CUSHWAKERETAIL.COM

Cushman & Wakefield Copyright 2024. No warranty or representation, express or implied, is made to the accuracy or completeness of the information contained herein, and same is submitted subject to errors, omissions, change of price, rental or other conditions, withdrawal without notice, and to any special listing conditions imposed by the property owner(s). As applicable, we make no representation as to the condition of the property (or properties) in question.



RETAIL SPACE

2,020 - 33,138 SF

RENT

\$6.00 - \$10.00 /psf NNN
(\$1.90/psf CAM)

NEIGHBORING TENANTS

Haverty's, CR Deals, Vance Outdoors, Home Emporium, Hobby Lobby, and more!

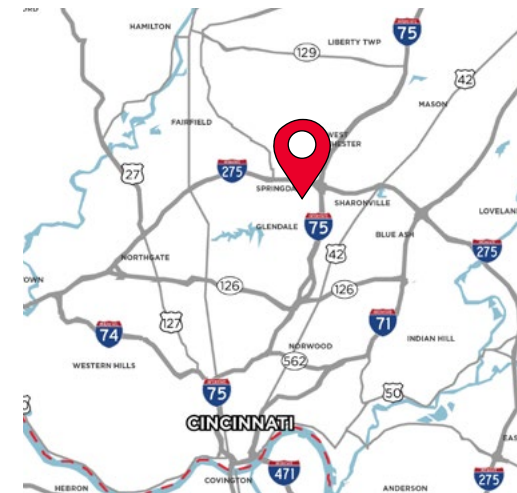
COMMENTS

- 33,138 SF of Jr. Anchor Space
- 2,020 SF of In-line space
- Good visibility from Kemper Road & Princeton Pike
- Excellent signage - 2 large pylons on Kemper & Princeton Pike
- Less than .25 miles to I-275 interchange
- Located across the street from Tri-County Mall (planned mixed-use redevelopment in the works)

NEIGHBORHOOD DEMOGRAPHICS



	POPULATION	AVERAGE HOUSEHOLD INCOME	DAYTIME POPULATION
1 Mile	6,466	\$65,262	16,614
3 Miles	43,651	\$70,880	96,235
5 Miles	140,918	\$87,876	214,921

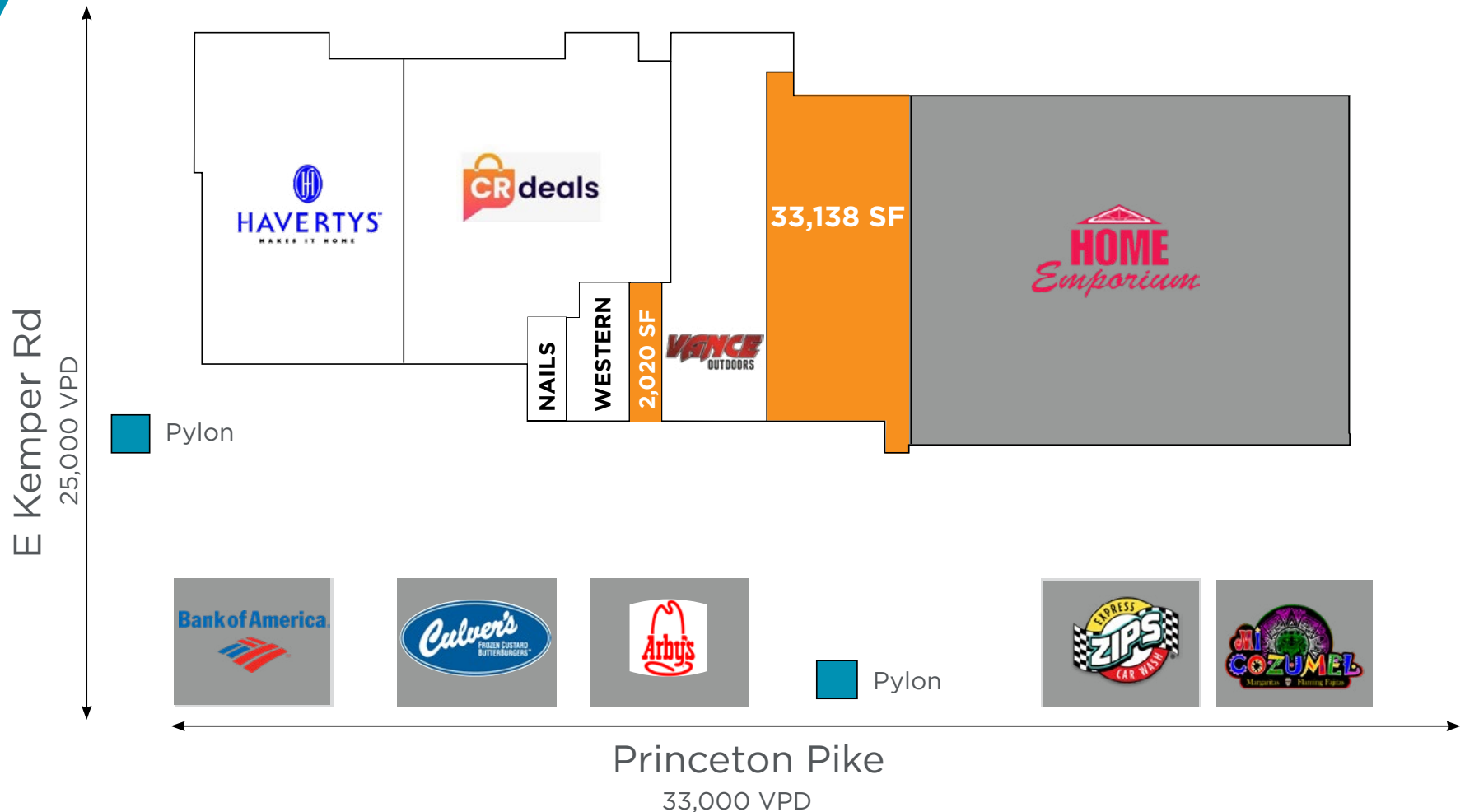




CASSINELLI SQUARE

11360-11500 Princeton Pike, Cincinnati, OH

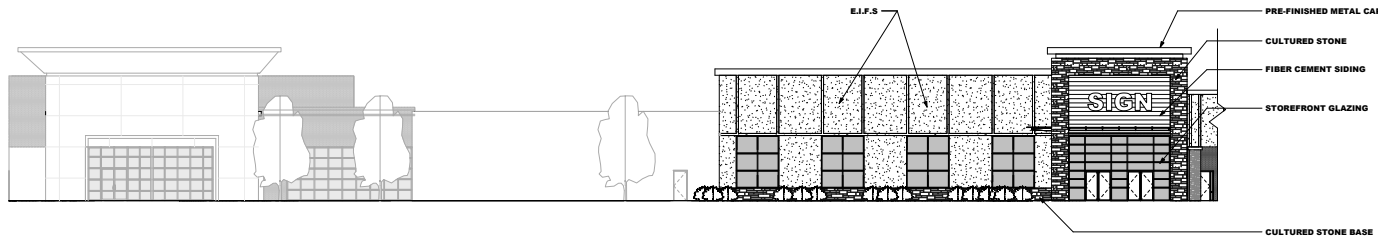
Retail Strip Center in Tri-County / For Lease



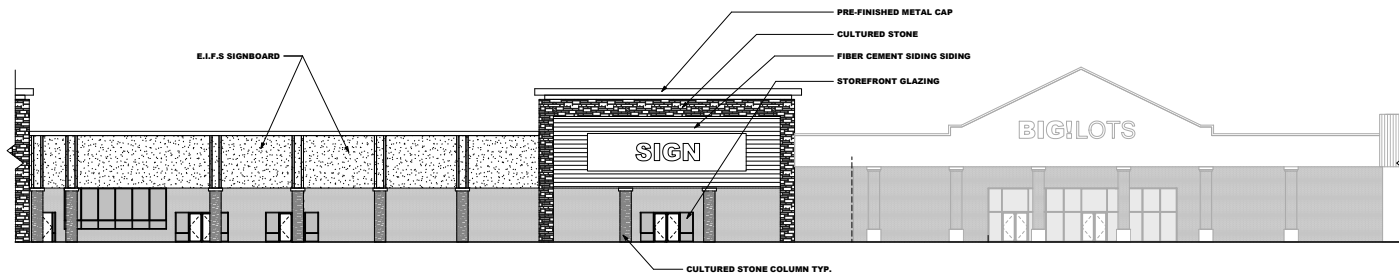
Rob Murphy / Director / rob.p.murphy@cushwake.com / +1 513 763 3033
Clare Holtmeier / Associate / clare.holtmeier@cushwake.com / +1 513 322 0776

Cushman & Wakefield Copyright 2024. No warranty or representation, express or implied, is made to the accuracy or completeness of the information contained herein, and same is submitted subject to errors, omissions, change of price, rental or other conditions, withdrawal without notice, and to any special listing conditions imposed by the property owner(s). As applicable, we make no representation as to the condition of the property (or properties) in question.

NEW FACADE WORK COMING SOON!



1 NEW WEST ELEVATION 1
302'-1 1/2"



2 NEW WEST ELEVATION 2
302'-1 1/2"



3 NEW COLORED ELEVATION
302'-1 1/2"



CASSINELLI SQUARE

11360-11500 Princeton Pike, Cincinnati, OH

Retail Strip Center in Tri-County / For Lease



Rob Murphy / Director / rob.p.murphy@cushwake.com / +1 513 763 3033
Clare Holtmeier / Associate / clare.holtmeier@cushwake.com / +1 513 322 0776

Cushman & Wakefield Copyright 2024. No warranty or representation, express or implied, is made to the accuracy or completeness of the information contained herein, and same is submitted subject to errors, omissions, change of price, rental or other conditions, withdrawal without notice, and to any special listing conditions imposed by the property owner(s). As applicable, we make no representation as to the condition of the property (or properties) in question.

Retail Strip Center in Tri-County / For Lease

