

2500 UNION

PRIME INDUSTRIAL FACILITY IN THE HEART OF KOKOMO

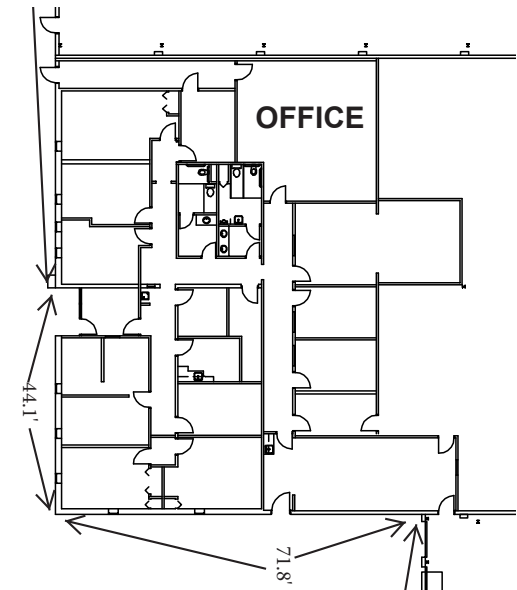
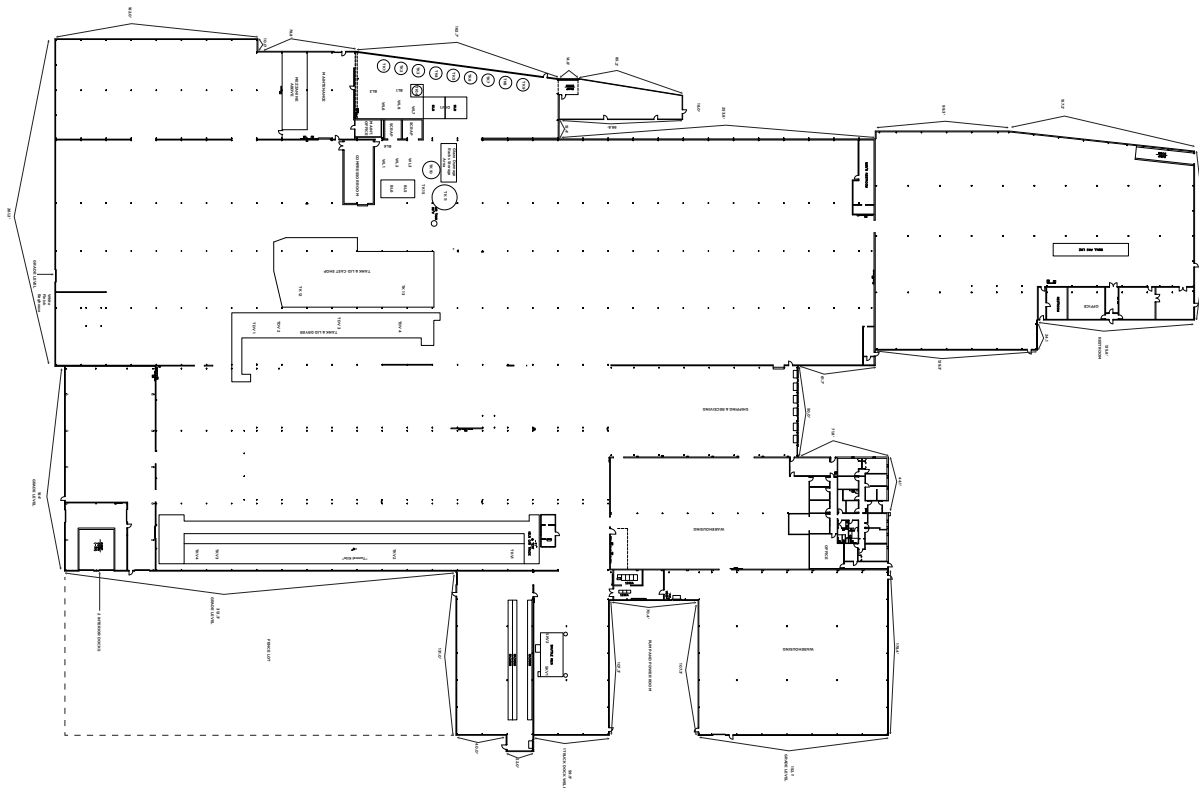


2500 N UNION STREET,
KOKOMO, IN 46901
±329,744 SF AVAILABLE



SITE PLAN WITH FUNCTIONAL LAYOUT

Located in Kokomo's established industrial district, 2500 N Union Street offers a substantial footprint ideal for heavy manufacturing, assembly, or logistics. This HI-zoned facility is positioned near the **Star Plus EV development**, and benefits from proximity to the **Industrial Heritage Trail**, providing workforce-accessible infrastructure. With flexible building areas, varied ceiling heights, and multiple dock and drive-in doors, this site is ideal for a wide array of users.



PURPOSE-BUILT FOR PRODUCTION AND FLEXIBILITY

PROPERTY HIGHLIGHTS:



Total Building Area: **±329,744 SF**



Site Size: **13.225 Acres**



Clear Heights: **Various**



Structure Exterior: **Pre-cast Panels**



Office Area: **±8,700 SF**



Sprinkler: **Wet**



Lighting: **LED and T5**



Dock Doors: **11**



Drive-in Doors: **4**



Parking: **Fenced Yard Extra Lot for Car Parking Spaces**



Gas: **NIPSCO 4" Line**



Electric: **Duke Energy 3,200 Amp 3 Phase**



Zoning: **HI - Heavy Manufacturing**

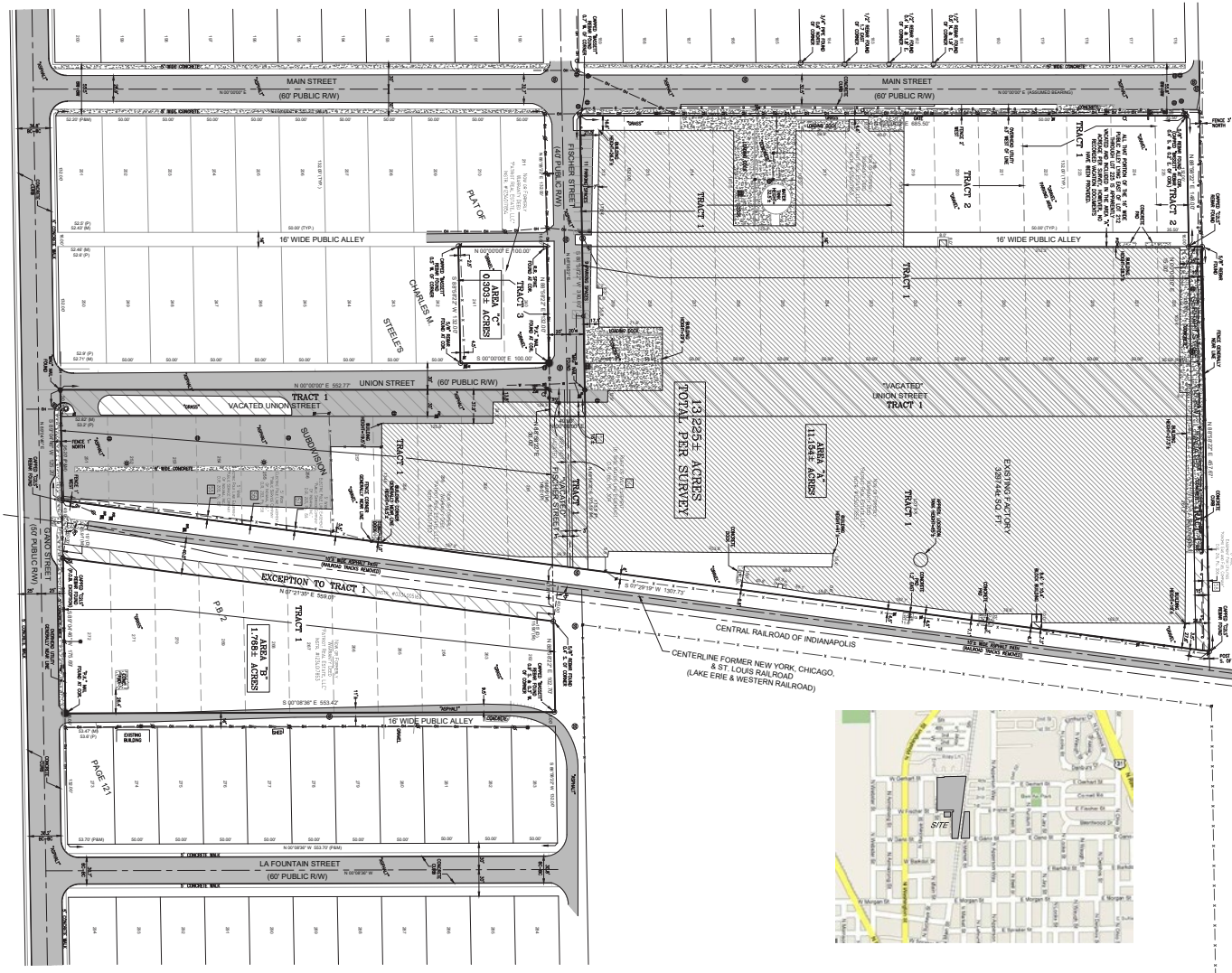


Specialty: **Adjacent to Industrial Heritage Trail**

2500 N UNION



SITE SURVEY



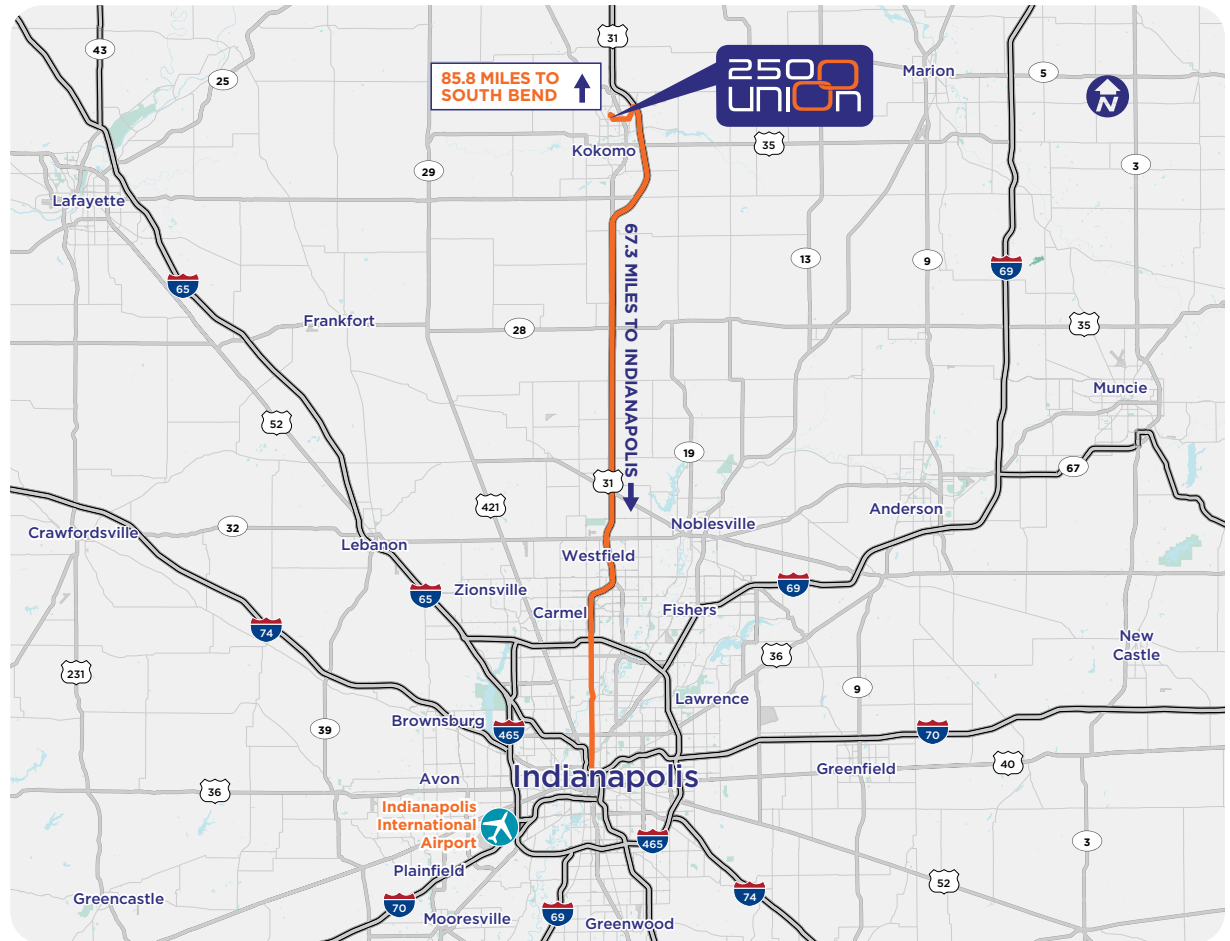
EXISTING CONDITIONS & FACILITY OVERVIEW

.....



AT THE HEART OF COMMERCE: KOKOMO'S PRIME CONNECTIVITY

Indiana is fast-paced and research-driven, boasting one of the most business-friendly climates in the nation. Known as the Crossroads of America, Indianapolis is intersected by more interstate highways than any other U.S. city—offering a strategic advantage that links the state to national and global markets



INDIANA ADVANTAGE: WHERE BUSINESS MEETS MOBILITY

STRONG FUNDAMENTALS

- AAA bond rating
- Right to Work State
- 4.9% Corporate Income Tax Rate
- 1-3% Capped Property Taxes
- No Inventory Tax
- No Manufacturing Equipment Sales Tax

LOCATED AT THE **MEDIAN CENTER**
OF THE **U.S. POPULATION**

#1
IN PASS THROUGH
HIGHWAYS

**BUSINESS
TAX CLIMATE**

#1
IN MIDWEST

#9
IN THE U.S.

**BEST STATE
FOR BUSINESS**

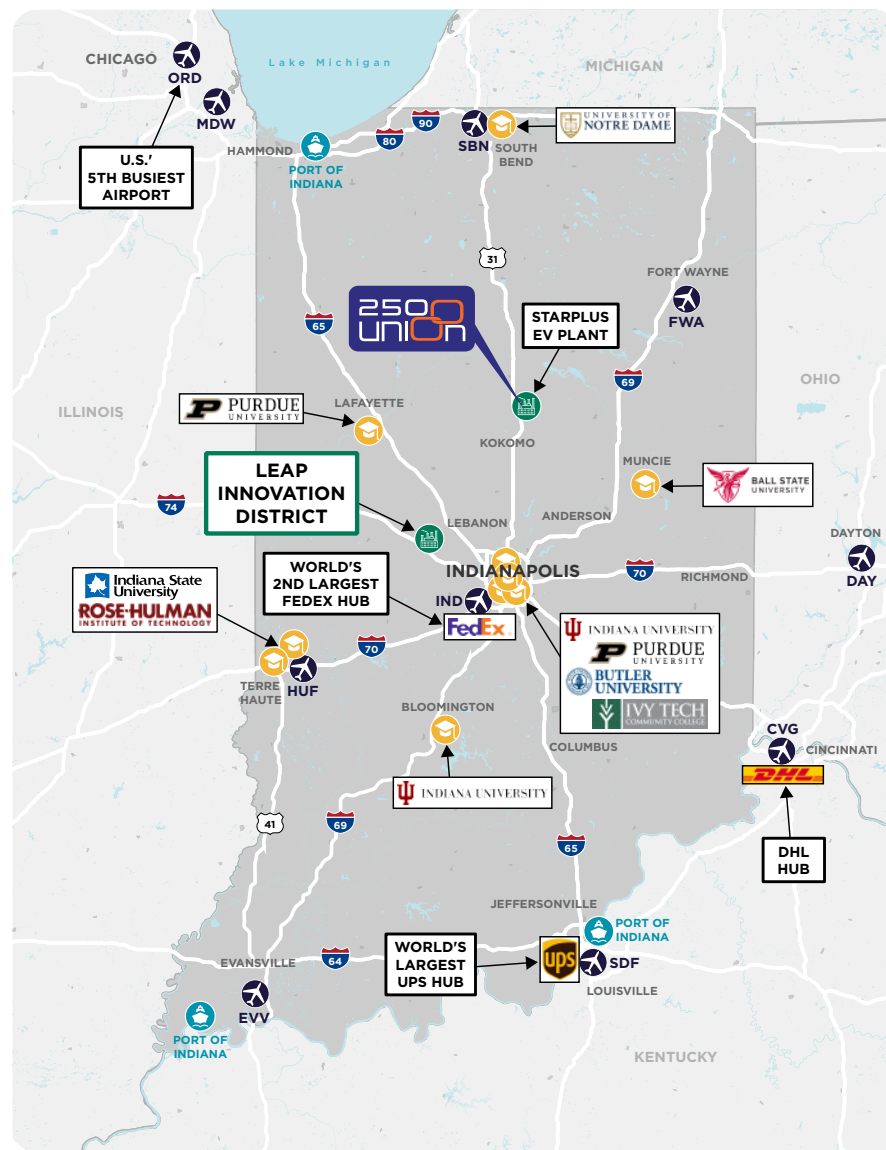
#1
IN MIDWEST

#5
IN THE U.S.

#3
INFRASTRUCTURE
America's Top
States for Business

1 in 5
IN THE U.S.
Work in Advanced
Manufacturing

#2
IN U.S. FOR
Worldwide lifesciences
exports





2500
Union

FOR MORE INFORMATION, PLEASE CONTACT:

BRYAN W. POYNTER, SIOR, CCIM

Cushman & Wakefield

317 639 0482

bryan.poynter@cushwake.com

PAUL WYMAN

The Wyman Group

765 419 1021

pwyma8@aol.com



**CUSHMAN &
WAKEFIELD**



©2025 Cushman & Wakefield. All rights reserved. The information contained in this communication is strictly confidential. This information has been obtained from sources believed to be reliable but has not been verified. NO WARRANTY OR REPRESENTATION, EXPRESS OR IMPLIED, IS MADE AS TO THE CONDITION OF THE PROPERTY (OR PROPERTIES) REFERENCED HEREIN OR AS TO THE ACCURACY OR COMPLETENESS OF THE INFORMATION CONTAINED HEREIN, AND SAME IS SUBMITTED SUBJECT TO ERRORS, OMISSIONS, CHANGE OF PRICE, RENTAL OR OTHER CONDITIONS, WITHDRAWAL WITHOUT NOTICE, AND TO ANY SPECIAL LISTING CONDITIONS IMPOSED BY THE PROPERTY OWNER(S). ANY PROJECTIONS, OPINIONS OR ESTIMATES ARE SUBJECT TO UNCERTAINTY AND DO NOT SIGNIFY CURRENT OR FUTURE PROPERTY PERFORMANCE.