

CENTER OF COMMERCE - BLDG 908

3019 MERCY DRIVE, ORLANDO, FL 32808



CONVENIENT ACCESS
TO I-4 AND SR 408

**58,800 SF AVAILABLE
FOR SUBLEASE**

SPACE HIGHLIGHTS

ASKING RATE

\$10.00/SF NNN

OPEX*

\$2.01 PSF

MONTHLY RATE**

\$60,320.23

WAREHOUSE SIZE

54,320 SF

OFFICE SIZE

4,480 SF

SUBLEASE EXPIRATION

MAY 31, 2027

ZONING

I-P

PARKING RATIO

0.65/1,000

CLEAR HEIGHT

24'

LOADING DOORS

(11) DOCK DOORS
(1) DRIVE-IN DOOR

YEAR BUILT

1991

AVAILABILITY

IMMEDIATELY

****Sales Tax included**
***Denotes Estimated Operating Expenses for 2025**

CONTACT INFORMATION



JARED BONSHIRE

Executive Managing Director
+1 407 541 4414
jared.bonshire@cushwake.com

DAVID PEREZ

Executive Managing Director
+1 407 541 4435
david.perez@cushwake.com

TAYLOR ZAMBITO

Senior Director
+1 407 541 4409
taylor.zambito@cushwake.com

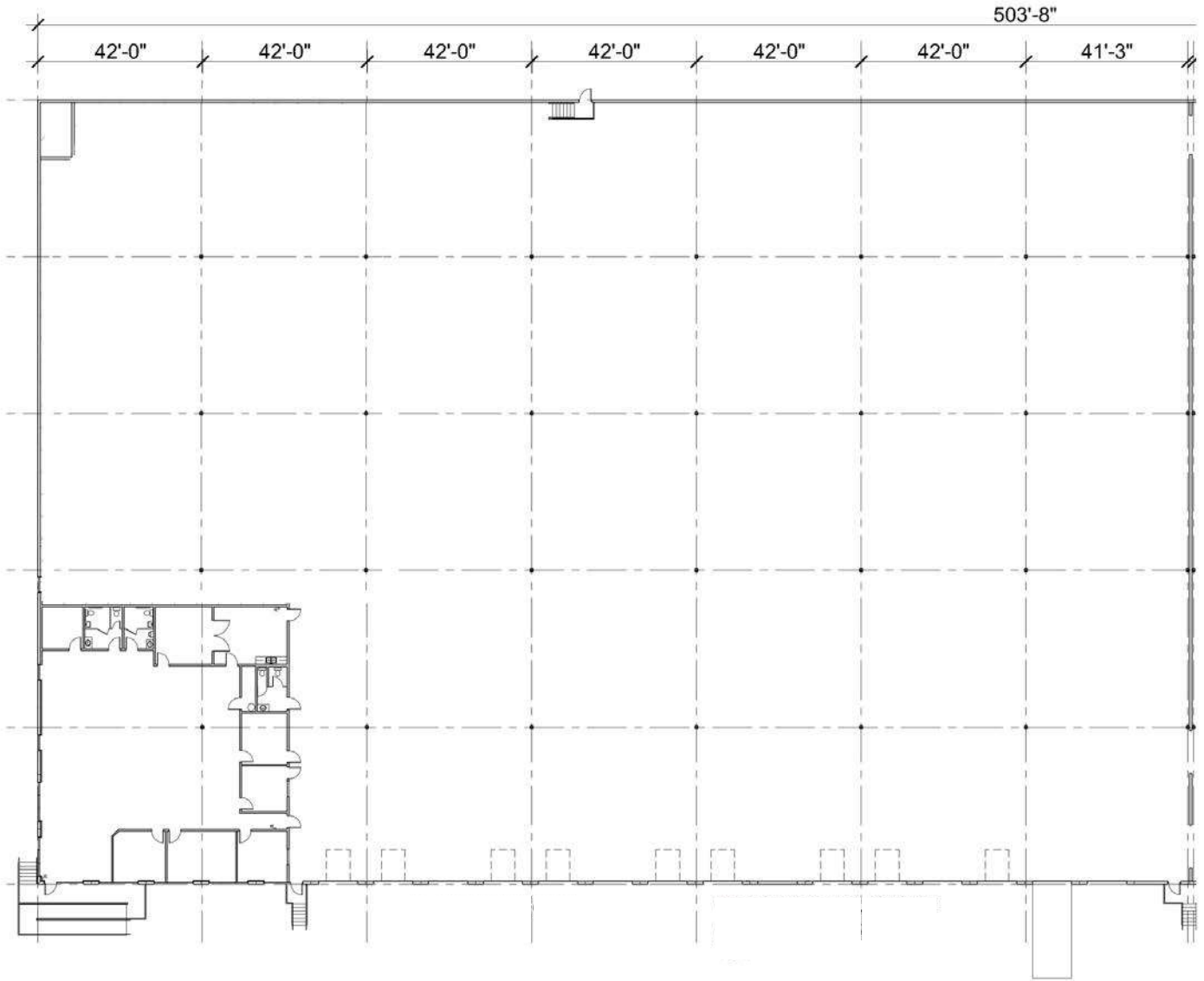
RYAN HUBBARD

Director
+1 407 541 4390
ryan.hubbard@cushwake.com

©2025 Cushman & Wakefield. All rights reserved. The information contained in this communication is strictly confidential. This information has been obtained from sources believed to be reliable but has not been verified. NO WARRANTY OR REPRESENTATION, EXPRESS OR IMPLIED, IS MADE AS TO THE CONDITION OF THE PROPERTY (OR PROPERTIES) REFERENCED HEREIN OR AS TO THE ACCURACY OR COMPLETENESS OF THE INFORMATION CONTAINED HEREIN, AND SAME IS SUBMITTED SUBJECT TO ERRORS, OMISSIONS, CHANGE OF PRICE, RENTAL OR OTHER CONDITIONS, WITHDRAWAL WITHOUT NOTICE, AND TO ANY SPECIAL LISTING CONDITIONS IMPOSED BY THE PROPERTY OWNER(S). ANY PROJECTIONS, OPINIONS OR ESTIMATES ARE SUBJECT TO UNCERTAINTY AND DO NOT SIGNIFY CURRENT OR FUTURE PROPERTY PERFORMANCE.

FLOOR PLAN

58,800 SF



CONTACT INFORMATION



JARED BONSHIRE
Executive Managing Director
+1 407 541 4414
jared.bonshire@cushwake.com

DAVID PEREZ
Executive Managing Director
+1 407 541 4435
david.perez@cushwake.com

TAYLOR ZAMBITO
Senior Director
+1 407 541 4409
taylor.zambito@cushwake.com

RYAN HUBBARD
Director
+1 407 541 4390
ryan.hubbard@cushwake.com

© 2025 Cushman & Wakefield. All rights reserved. The information contained in this communication is strictly confidential. This information has been obtained from sources believed to be reliable but has not been verified. NO WARRANTY OR REPRESENTATION, EXPRESS OR IMPLIED, IS MADE AS TO THE CONDITION OF THE PROPERTY (OR PROPERTIES) REFERENCED HEREIN OR AS TO THE ACCURACY OR COMPLETENESS OF THE INFORMATION CONTAINED HEREIN, AND SAME IS SUBMITTED SUBJECT TO ERRORS, OMISSIONS, CHANGE OF PRICE, RENTAL OR OTHER CONDITIONS, WITHDRAWAL WITHOUT NOTICE, AND TO ANY SPECIAL LISTING CONDITIONS IMPOSED BY THE PROPERTY OWNER(S). ANY PROJECTIONS, OPINIONS OR ESTIMATES ARE SUBJECT TO UNCERTAINTY AND DO NOT SIGNIFY CURRENT OR FUTURE PROPERTY PERFORMANCE.