

4,346 SF

SUBLEASE AVAILABLE



6901 E FISH LAKE RD

MAPLE GROVE, MINNESOTA

6901 E FISH LAKE RD, MAPLE GROVE, MN

PROPERTY HIGHLIGHTS

- **Excellent location with quick access to Hwy 494 & 694**
- **Great office/flex finish**
- **Ample amenities in the area**

Building Size: 118,947 SF

Available: 2,350 SF Office
1,381 SF Flex
615 SF Warehouse
4,346 SF Total

Rate: Negotiable

Clear Height: 18'

Year Built: 2002

Loading: 1 Dock

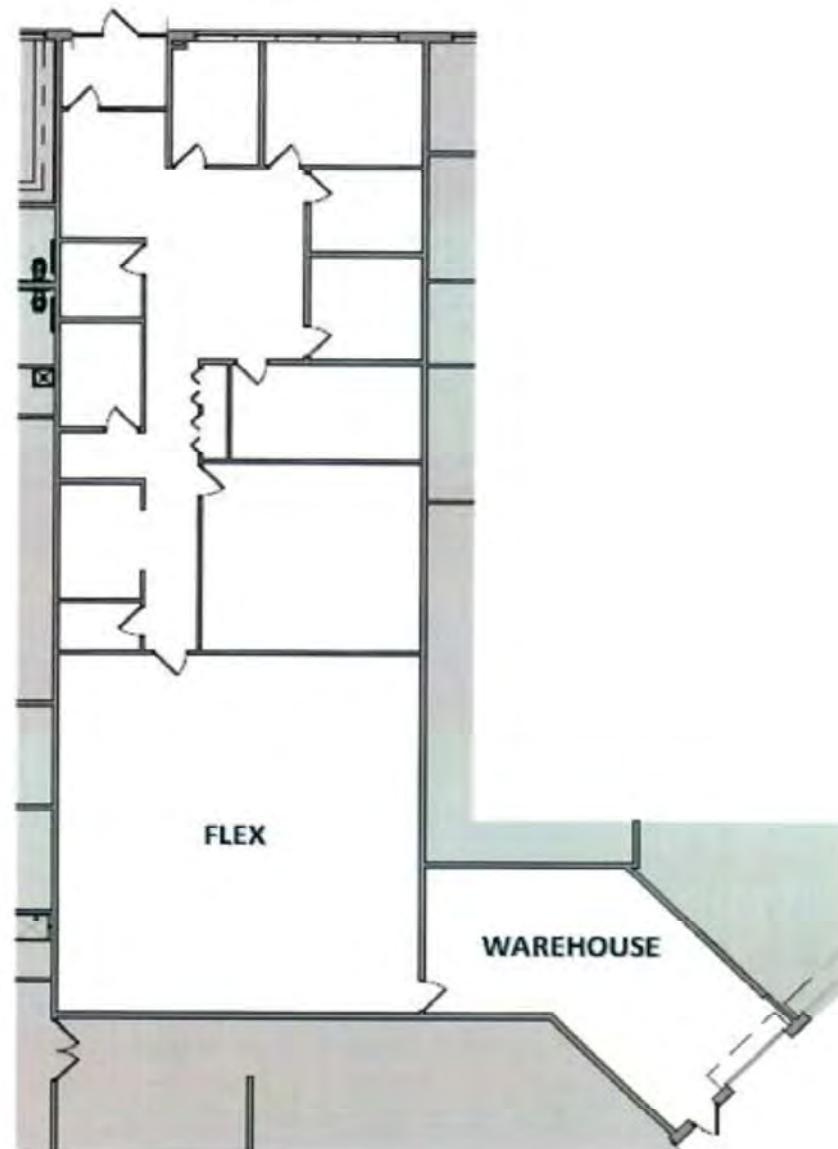
Sublease Through: 1/31/2027

2025 Tax/CAM: \$6.00 PSF



6901 E FISH LAKE RD, MAPLE GROVE, MN

FLOOR PLAN

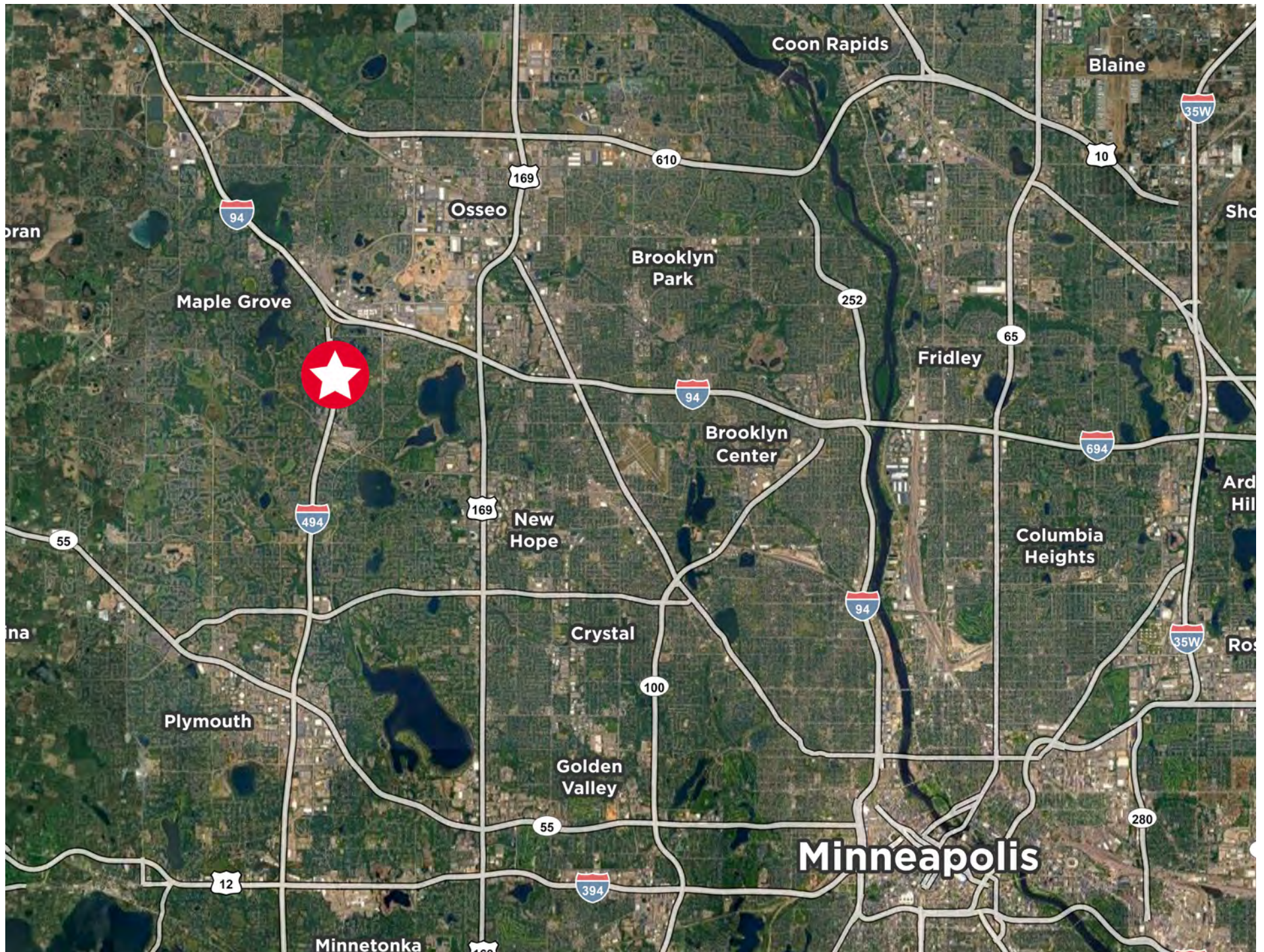


6901 E FISH LAKE RD, MAPLE GROVE, MN

SITE PHOTOS



6901 E FISH LAKE RD, MAPLE GROVE, MN





CONTACT INFORMATION

Jake Kelly

Senior Associate

+1 952 913 0055

jake.kelly@cushwake.com

Judd Fenlon

Brokerage Services

+1 612 231 9606

judd.fenlon@cushwake.com

Sam Gleason

Senior Associate

+1 952 241 1111

sam.gleason@cushwake.com

3500 American Blvd W Suite 200
Minneapolis, MN 55431
cushmanwakefield.com

