



901 VIA PIEMONTE

122,602 SQUARE FOOT CLASS A OFFICE BUILDING
ONTARIO, CALIFORNIA

ONE
PIEMONTE



ONE PIEMONTE

901 VIA PIEMONTE

122,602 SQUARE FOOT CLASS A OFFICE BUILDING
ONTARIO, CALIFORNIA



ONE PIEMONTE FEATURES

- Lease Rate: \$2.75 FSG
- Ontario's Finest Corporate Address
- Five-Story Class A Office Building
- Parking Ratio of 4:1,000
- Efficient 25,000 RSF Floor Plates with Column-Free Space
- Elegant Lobbies
- Adjacent to the Toyota Arena
- Accessible by the 10, 15, 60 and 210 Freeways
- Two miles from the Ontario International Airport
- Walking distance to Ontario Mills Mall, hotels, restaurants and retail centers



AVAILABILITIES

SUITE	RSF	DESCRIPTION
130	1,565	Concept Plan. 3 offices, kitchen, file/storage area, open cubicle area.

EXCLUSIVE AGENTS:

SEAN KERN

sean.kern@cushwake.com

(909) 942-4691

Lic. #01377294

RYAN RUSSELL

ryan.russell@cushwake.com

(909) 942-4697

Lic. #01505274

No warranty or representation, express or implied, is made as to the accuracy of the information contained herein, and same is submitted subject to errors and omissions, change of price, rental or other conditions, withdrawal without notice, and to any specific listing conditions, imposed by our principals.



Cushman & Wakefield

Of California, Inc.

901 Via Piemonte, Suite 200

Ontario, CA 91764

Lic. #00616335

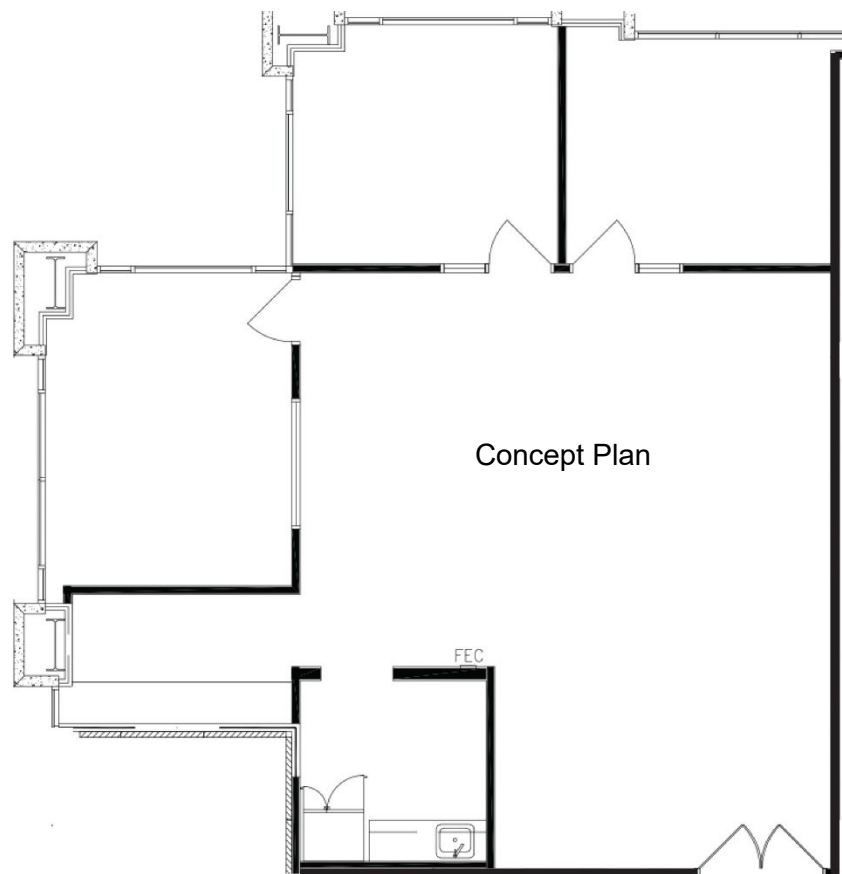


901 VIA PIEMONTE

122,602 SQUARE FOOT CLASS A OFFICE BUILDING
ONTARIO, CALIFORNIA



Suite	Rentable SF	Rate Per SF
130	1,565	\$2.75 FSG



EXCLUSIVE AGENTS:

SEAN KERN

sean.kern@cushwake.com
(909) 942-4691
Lic. #01377294

RYAN RUSSELL

ryan.russell@cushwake.com
(909) 942-4697
Lic. #01505274



Cushman & Wakefield
Of California, Inc.
901 Via Piemonte, Suite 200
Ontario, CA 91764
Lic. #00616335

No warranty or representation, express or implied, is made as to the accuracy of the information contained herein, and same is submitted subject to errors and omissions, change of price, rental or other conditions, withdrawal without notice, and to any specific listing conditions, imposed by our principals.