

PREMIER INLAND EMPIRE WEST LOCATION | INDUSTRIAL DISTRIBUTION FACILITY



GID

BUILDING 1 | 589,012 SF
100% AIR-CONDITIONED WAREHOUSE & OFFICES

5331 S CARPENTER AVE
ONTARIO, CA



COLONY COMMERCE CENTER

589,012 SF

TOTAL AVAILABLE

100%

CLIMATE-CONTROLLED
WAREHOUSE

8,000

AMPS

HIGH-IMAGE

OFFICES (SEPARATE SHIPPING/RECEIVING
OFFICES WITH RESTROOMS)

36'

INTERIOR
CLEARANCE

ESFR

(K25.2 HEADS)

112

DOCK-HIGH
DOORS
(9'x10')

4

GROUND-LEVEL
DOORS
(12'x14')

140

TRAILER
PARKING STALLS

214

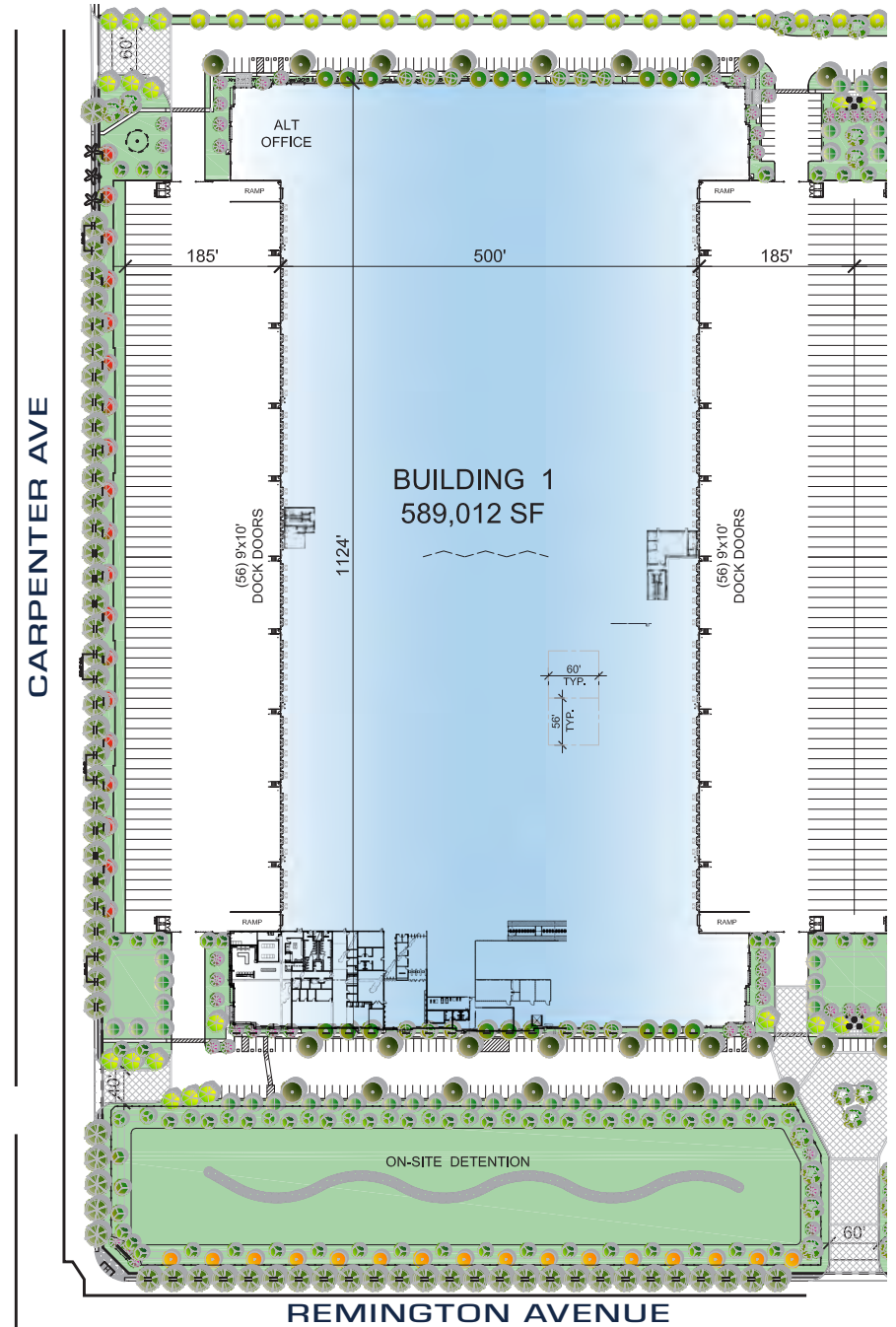
AUTO
PARKING STALLS

185'

FULLY-SECURED TRUCK
COURT CENTERED DIVIDED

7"

FLOOR SLAB
4,000 PSI

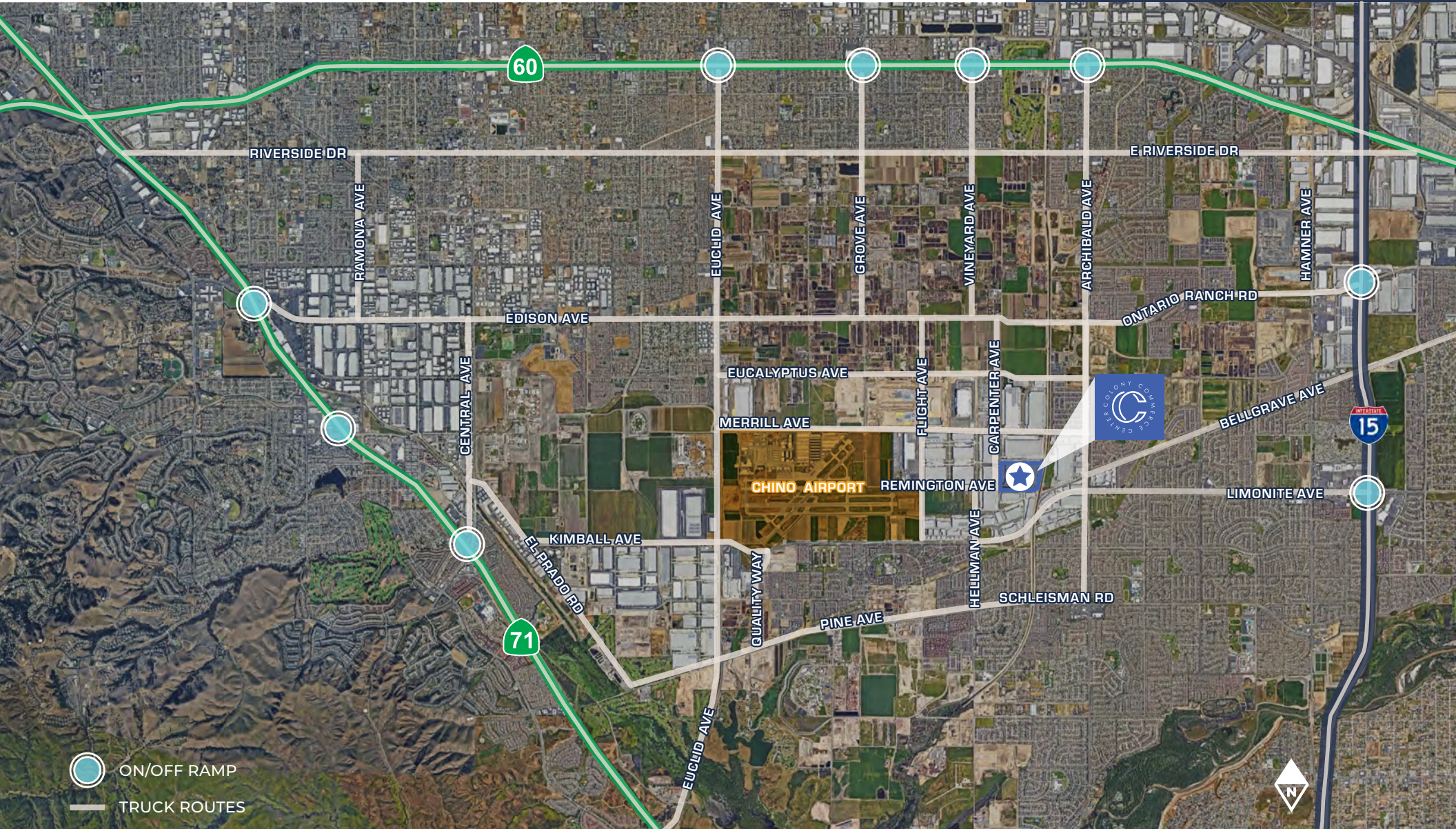


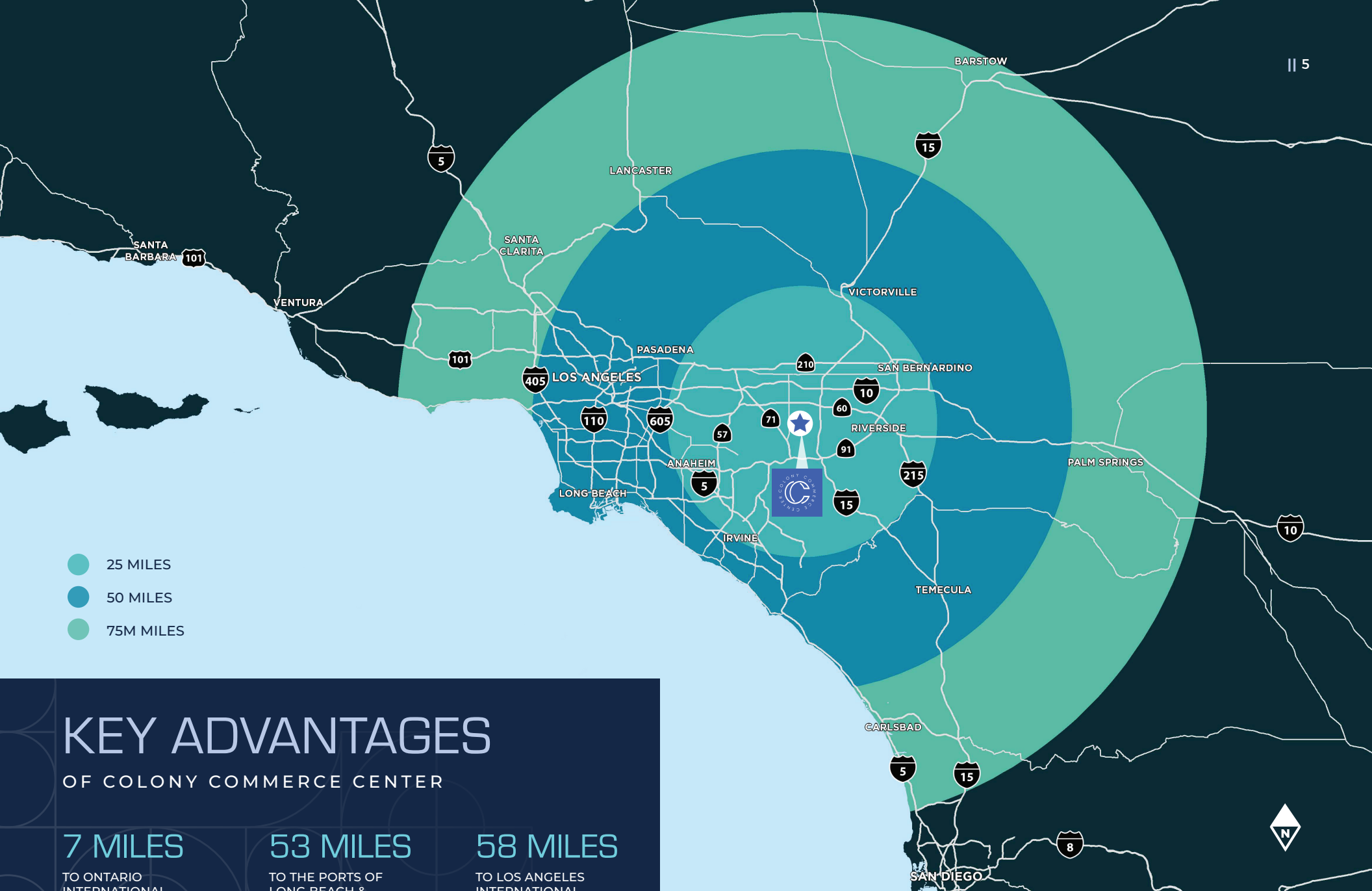
CORPORATE OCCUPIERS

|| 3



ACCESSIBILITY





KEY ADVANTAGES

OF COLONY COMMERCE CENTER

7 MILES

TO ONTARIO
INTERNATIONAL
AIRPORT

53 MILES

TO THE PORTS OF
LONG BEACH &
LOS ANGELES COMPLEX

58 MILES

TO LOS ANGELES
INTERNATIONAL
AIRPORT (LAX)

109 MILES

TO SAN DIEGO

123 MILES

TO THE U.S./MEXICO
BORDER

237 MILES

TO LAS VEGAS, NEVADA

336 MILES

TO PHOENIX, ARIZONA



BUILDING 1 | 589,012 SF
5331 S CARPENTER AVE
ONTARIO, CA

GID

PHIL LOMBARDO
909 942 4678
phil.lombardo@cushwake.com
Lic. #00892477

ANDREW STARNES
909 942 4667
andrew.starnes@cushwake.com
Lic. #01799801

CRUISE ADAMS
909 942 4661
cruise.adams@cushwake.com
Lic. #02075368



©2025 Cushman & Wakefield. All rights reserved. The information contained in this communication is strictly confidential. This information has been obtained from sources believed to be reliable but has not been verified. NO WARRANTY OR REPRESENTATION, EXPRESS OR IMPLIED, IS MADE AS TO THE CONDITION OF THE PROPERTY (OR PROPERTIES) REFERENCED HEREIN OR AS TO THE ACCURACY OR COMPLETENESS OF THE INFORMATION CONTAINED HEREIN, AND SAME IS SUBMITTED SUBJECT TO ERRORS, OMISSIONS, CHANGE OF PRICE, RENTAL OR OTHER CONDITIONS, WITHDRAWAL WITHOUT NOTICE, AND TO ANY SPECIAL LISTING CONDITIONS IMPOSED BY THE PROPERTY OWNER(S). ANY PROJECTIONS, OPINIONS OR ESTIMATES ARE SUBJECT TO UNCERTAINTY AND DO NOT SIGNIFY CURRENT OR FUTURE PROPERTY PERFORMANCE. COE-PM-WEST- 06/09/25