

# JETPORT COMMERCE PARK

Benjamin Rd & Jetport Industrial Blvd. Tampa, FL 33634



PLEASE CONTACT FOR ADDITIONAL INFORMATION:

TREY CARSWELL, SIOR  
Managing Director  
+1 813 230 6131  
[trey.carswell@cushwake.com](mailto:trey.carswell@cushwake.com)

LISA ROSS, SIOR  
Managing Director  
+1 813 230 6131  
[lisa.ross@cushwake.com](mailto:lisa.ross@cushwake.com)

SAM KOROLOS  
Senior Associate  
+1 704 989 1327  
[sam.korolos@cushwake.com](mailto:sam.korolos@cushwake.com)

Melissa Watterworth  
Associate  
+1 813 599 2190  
[Melissa.watterworth@cushwake.com](mailto:Melissa.watterworth@cushwake.com)



# JETPORT COMMERCE PARK

Benjamin Rd. & Jetport Industrial Blvd. Tampa, FL 33634



## PROPERTY HIGHLIGHTS

- 18' Minimum Clear Height
- Dock High and Grade Level Loading
- Tilt-Wall Construction
- ½ Mile to the Veterans Expressway

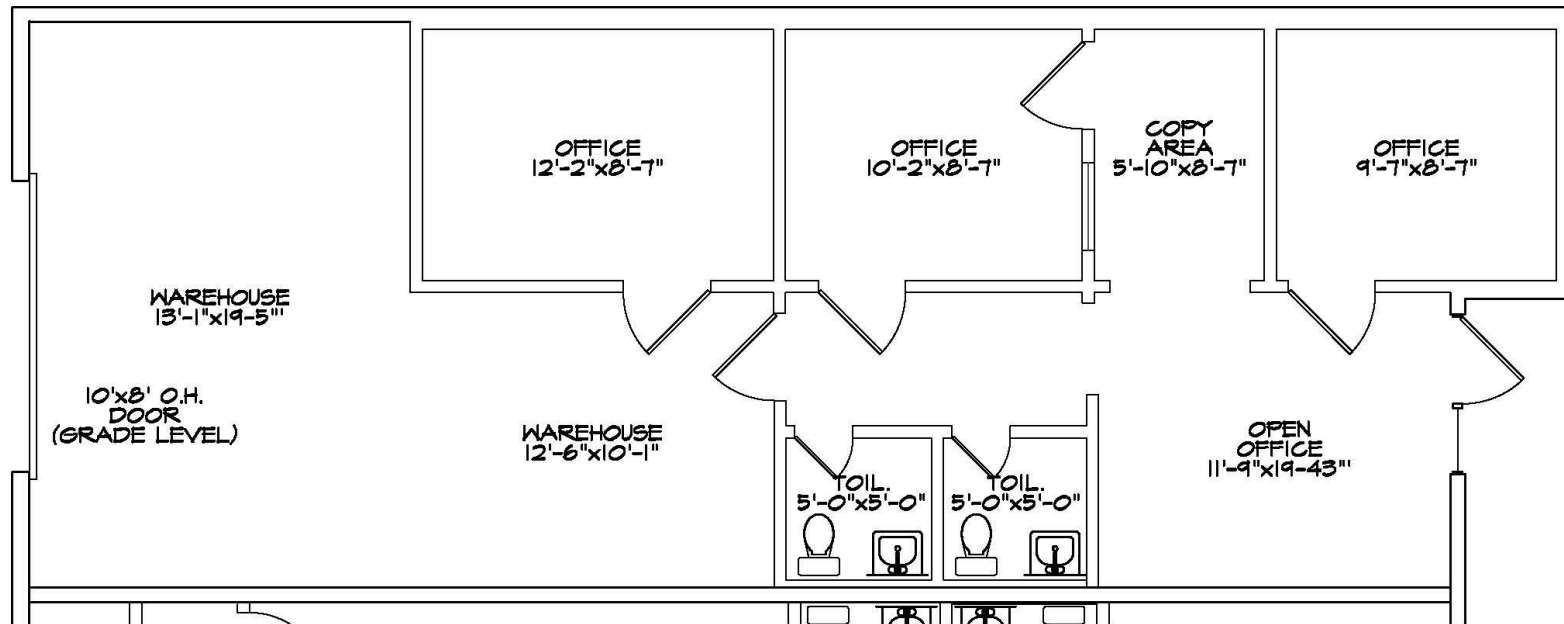
Veterans Expressway  
Visibility and Frontage  
on Benjamin Road

# BUILDING 511

## Suite 5950

### SPACE HIGHLIGHTS

- Available SF: 1,000 SF
- Office SF: ~ 615 SF
- Loading: 1 Grade Level Door
- Available Now

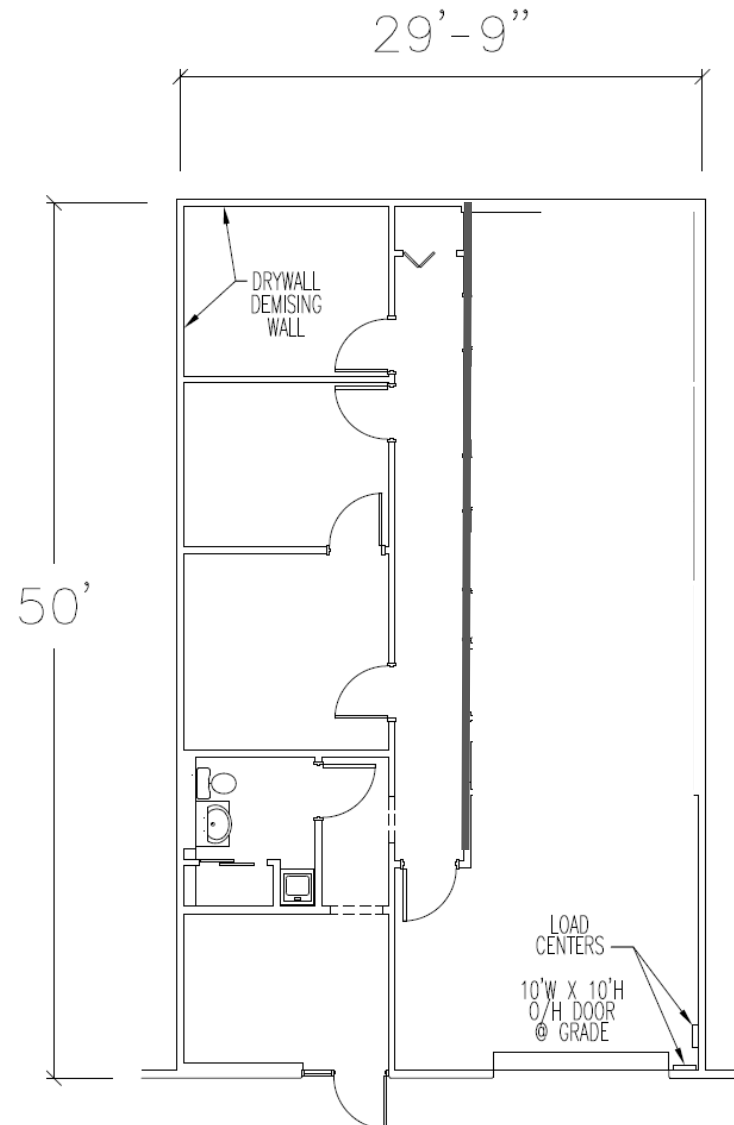


# BUILDING 515

Suite 5914

## SPACE HIGHLIGHTS

- **Available SF:** 1,500 SF
- **Office SF:** ~ 750 SF
- **Loading:** 1 Grade Level Door
- **Available Now**



# BUILDING 518

## Suite 6102

### SPACE HIGHLIGHTS

- **Available SF:** 1,809 SF
- **Office SF:** 300 SF
- **Loading:** 1 Dock High Door
- **Clear Height:** 18'
- **Available Now**

**FLOORPLAN COMING SOON**

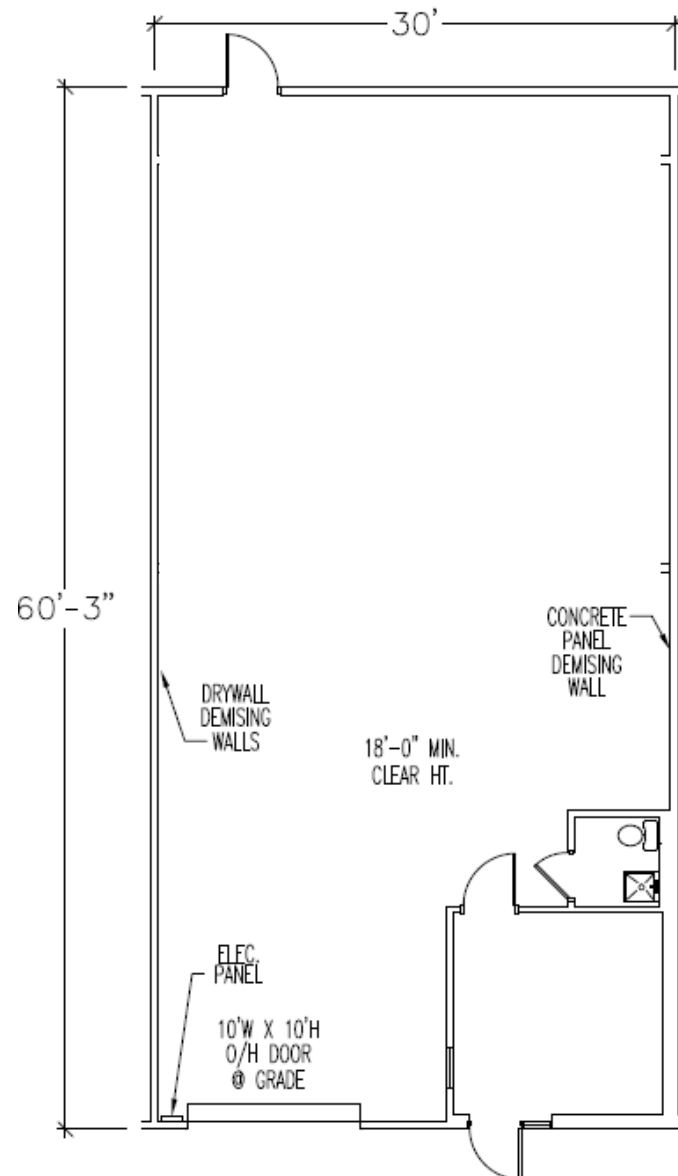


# BUILDING 515

## Suite 5900

### SPACE HIGHLIGHTS

- Available SF: 1,899 SF
- Office SF: 183 SF
- Clear Height: 18'
- Loading: 1 Grade Level Door
- Available Now

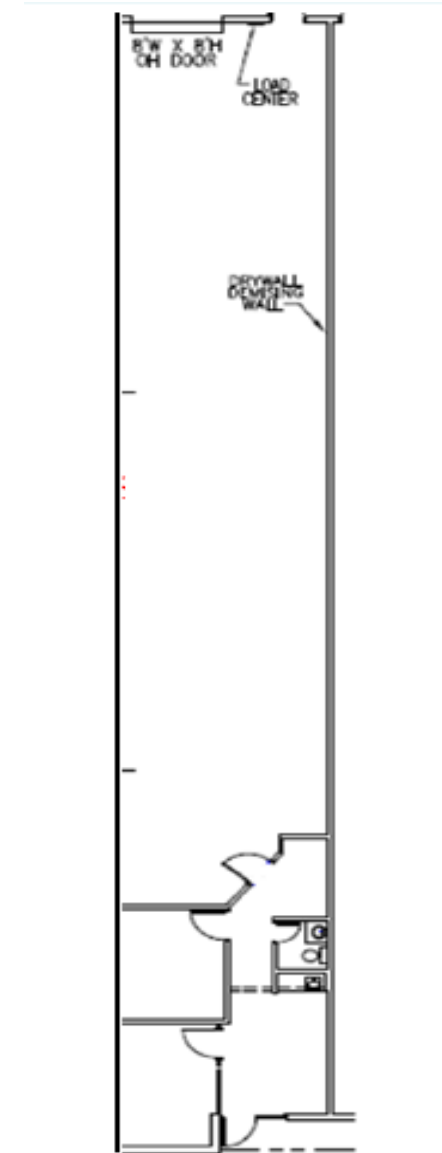


# BUILDING 513

## Suite 6009

### SPACE HIGHLIGHTS

- Available SF: 2,400 SF
- Office SF: ~400 SF
- Loading: 1 Dock High Door
- Clear Height: 18'
- Available Now





# BUILDING 512

## Suite 6020

### SPACE HIGHLIGHTS

- **Available SF:** 2,400 SF
- **Office SF:** ~300 SF
- **Loading:** 1 Dock High Door
- **Clear Height:** 18'
- **Available Now**



CUSHMAN &  
WAKEFIELD



RICHLAND

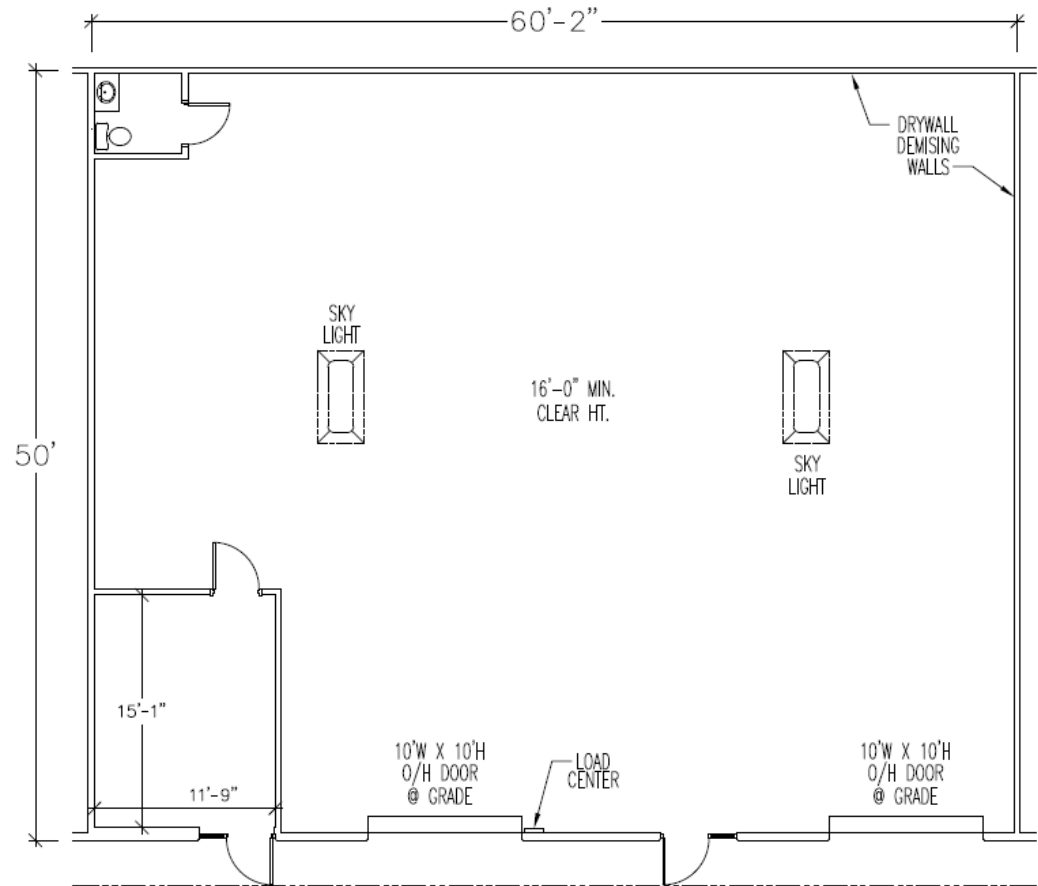


# BUILDING 515

## Suite 5922

### SPACE HIGHLIGHTS

- **Available SF:** 3,189 SF
- **Office SF:** 191 SF
- **Loading:** 2 Grade Level Doors
- **Clear Height:** 16'
- **Available Now**

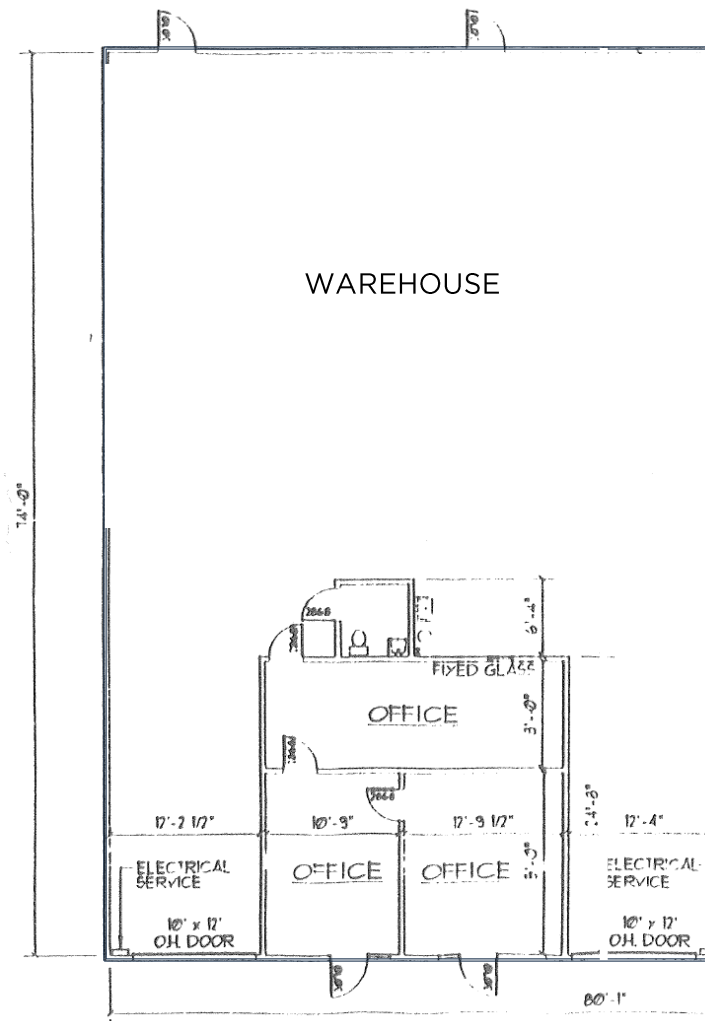


# BUILDING 515

## Suite 5892

### SPACE HIGHLIGHTS

- **Available SF:** 3,750 SF
- **Office SF:** ~500 SF
- **Loading:** 2 Grade Level Doors
- **Clear Height:** 16'
- **Available Now**



# BUILDING 516

## Suite 6018

### SPACE HIGHLIGHTS

- **Available SF:** 9,000 SF
- **Office SF:** ~ 2,150 SF
- **Loading:** 4 Dock High Loading Doors
- **Clear Height:** 18'
- **Available:** 2/1/2026

