



NOW OPEN



FUTURE LEWIS ESTATES
RECREATIONAL CENTRE

WEBBER GREENS RD

WINTERBURN RD

FOR LEASE

WINTERBURN POINT

NWC OF WINTERBURN ROAD (215TH STREET)
& WEBBER GREENS DRIVE (92ND AVENUE)

Cushman & Wakefield Edmonton
Suite 2700, TD Tower
10088 102 Avenue
Edmonton, AB T5J 2Z1
cwedm.com

John Shamey
Partner
780-887-5646
john.shamey@cwedm.com

Mark McCann
Partner
780-952-8328
mark.mccann@cwedm.com

Cody Miner, B.COMM.
Sales Associate
403-877-9431
cody.miner@cwedm.com

PROPERTY HIGHLIGHTS

- Grocery anchored shopping centre
- Retail draws in the immediate trade area include: Costco, Save-On Foods, Dollarama, McDonalds, Canadian Brewhouse and numerous other service related retailers
- Located in close proximity to the future Lewis Farms Recreation Centre
- Winterburn Point is exposed to 20,000 vehicles per day
- Site features ample on site parking
- High exposure pylon signage available
- Possession available 2025

PROPERTY DETAILS

MUNICIPAL ADDRESS

Winterburn RD & Webber Greens DR,
Edmonton, AB

ZONING

DC2 - Site Specific Development
Control allows for a wide variety of uses

NEIGHBOURHOOD

Lewis Farms & Webber Greens

Additional Rent

\$18.50/SF (est. 2025)



DEMOGRAPHICS

POPULATION			
	1km	3km	5km
	14,775	35,642	98,085

AVERAGE INCOME			
	1km	3km	5km
	\$129,665	\$126,072	\$113,409

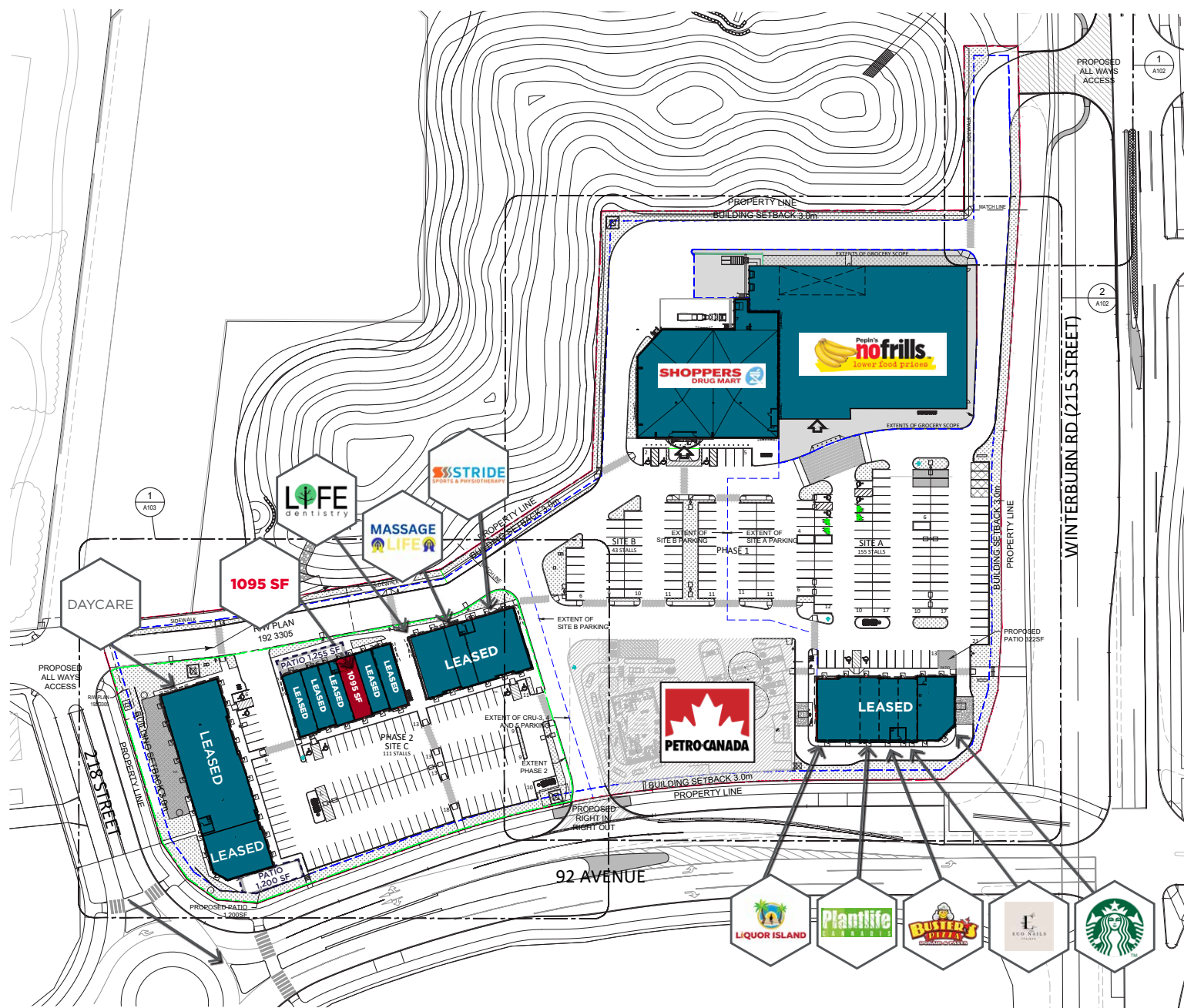
SITE PLAN



AVAILABLE



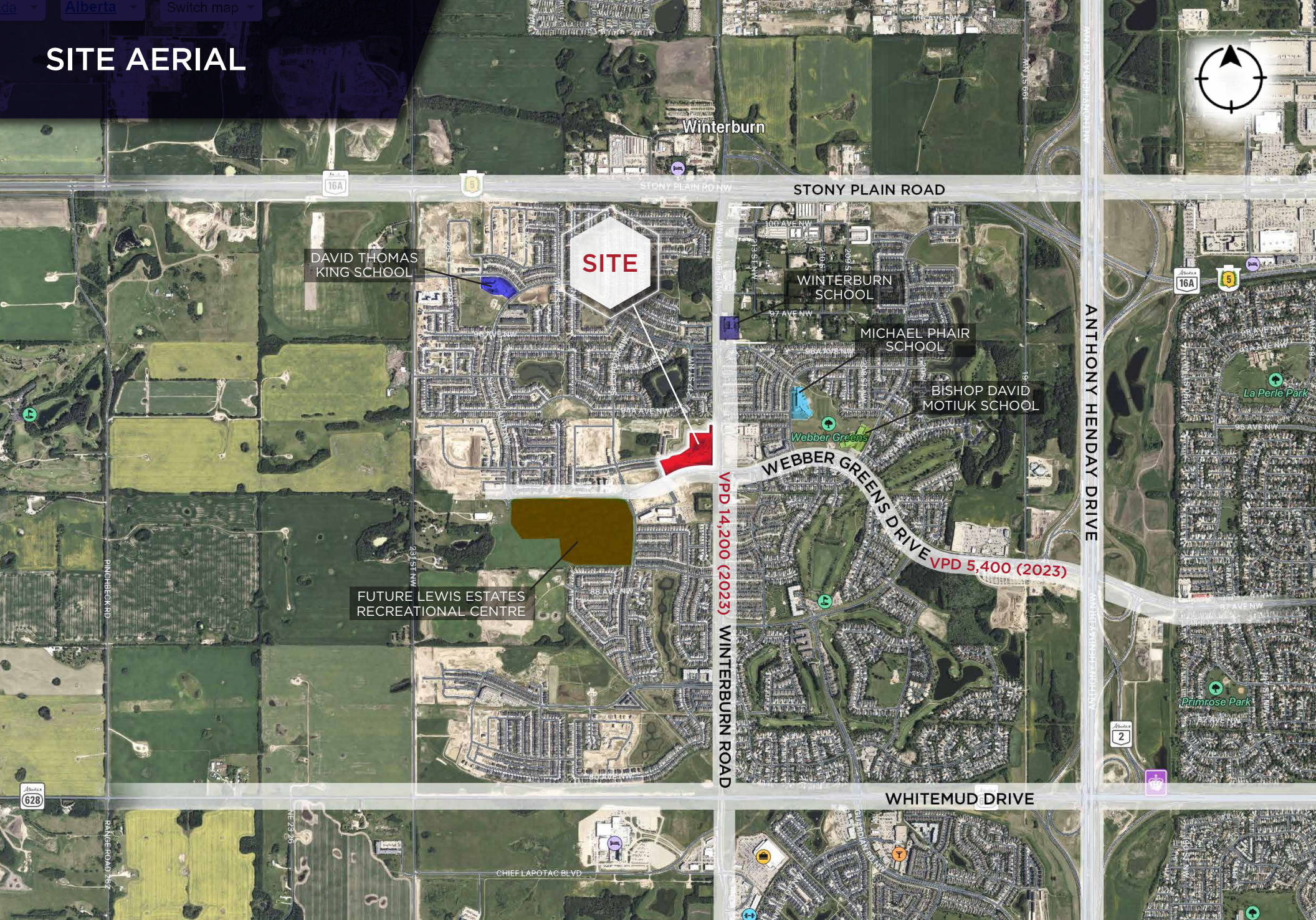
LEASED



EXTERIOR PHOTOS



SITE AERIAL



PROPERTY PHOTOS

LOOKING EAST

STEWART
GREENS
POPULATION:
1,292

WEBBER
GREENS
POPULATION:
3,738

SUDER
GREENS
POPULATION:
3,720

WINTERBURN RD

SITE

SECORD
POPULATION:
9,807

ROSENTHAL
POPULATION:
1,630

WEBBER GREENS RD





John Shamey

Partner

780-887-5646

john.shamey@cwedm.com

Mark McCann

Partner

780-952-8328

mark.mccann@cwedm.com

Cody Miner, B.COMM.

Sales Associate

403-877-9431

cody.miner@cwedm.com