



FOR SALE | RESIDENTIAL DEVELOPMENT OPPORTUNITY

Asking Price: \$3,900,000 | Site Area: 1.84 ACRES

1941 & 1949 OXFORD STREET WEST

London, ON



**CUSHMAN &
WAKEFIELD**

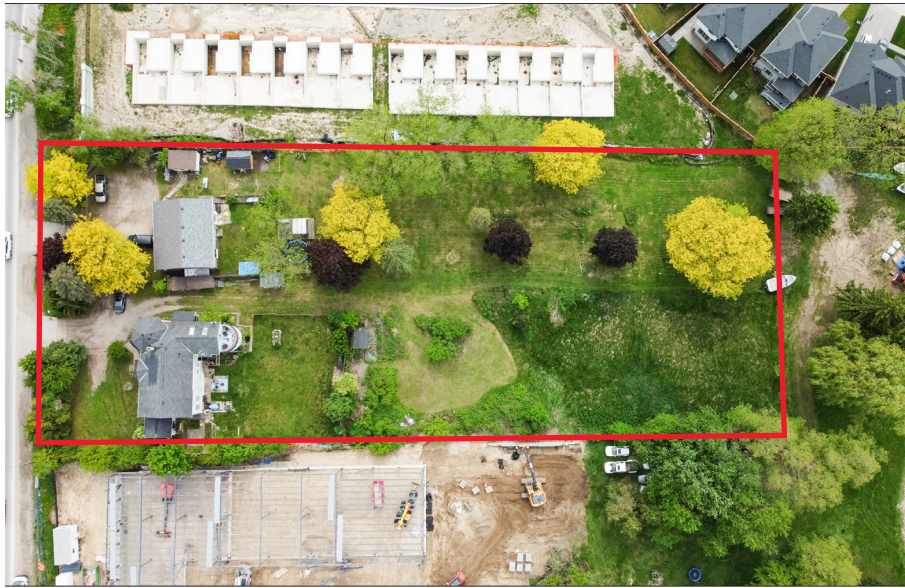
Southwestern Ontario

ASKING PRICE: \$3,900,000

PROPERTY HIGHLIGHTS

Residential development opportunity in Riverbend. Located in one of north west London's most sought-after neighbourhoods, this 1.84-acre parcel offers exceptional potential for residential development. Just steps from major amenities and the innovative west 5 community by Sifton, the site is ideally positioned for growth. A rare opportunity to develop in one of London's premier locations!

- **Site Area:** 1.84 Acres
- **Property Taxes:** \$14,785.79 (2025)
- **Zoning:** R1-14
- Concept plan for a 16-storey, 355-unit apartment building



JAMESON LAKE

Sales Representative

519 438 8548

jameson.lake@cushwakeswo.com

BRENT RUDELL

Broker of Record

519 438 5608

brent.rudell@cushwakeswo.com

CUSHMAN & WAKEFIELD
SOUTHWESTERN ONTARIO
850 Medway Park Dr, Suite 201
London, Ontario N6G 5C6
www.cushwakeswo.com



**CUSHMAN &
WAKEFIELD**

Southwestern Ontario

©2025 Cushman & Wakefield Southwestern Ontario, Real Estate Brokerage, Independently Owned and Operated. A Member of the Cushman & Wakefield Alliance. This information has been obtained from sources believed to be reliable but has not been verified. No warranty or representation, express or implied, is made as to the condition of the property (or properties) referenced herein or as to the accuracy or completeness of the information contained herein, and same is submitted subject to errors, omissions, change of price, rental or other conditions, withdrawal without notice, and to any special listing conditions imposed by the property owner(s). Any projections, opinions or estimates are subject to uncertainty and do not signify current or future property performance. All rights reserved.