

# R&D/Flex Building for Lease

±13,068 SF



**2250**  
**WALSH AVENUE**  
SANTA CLARA, CA





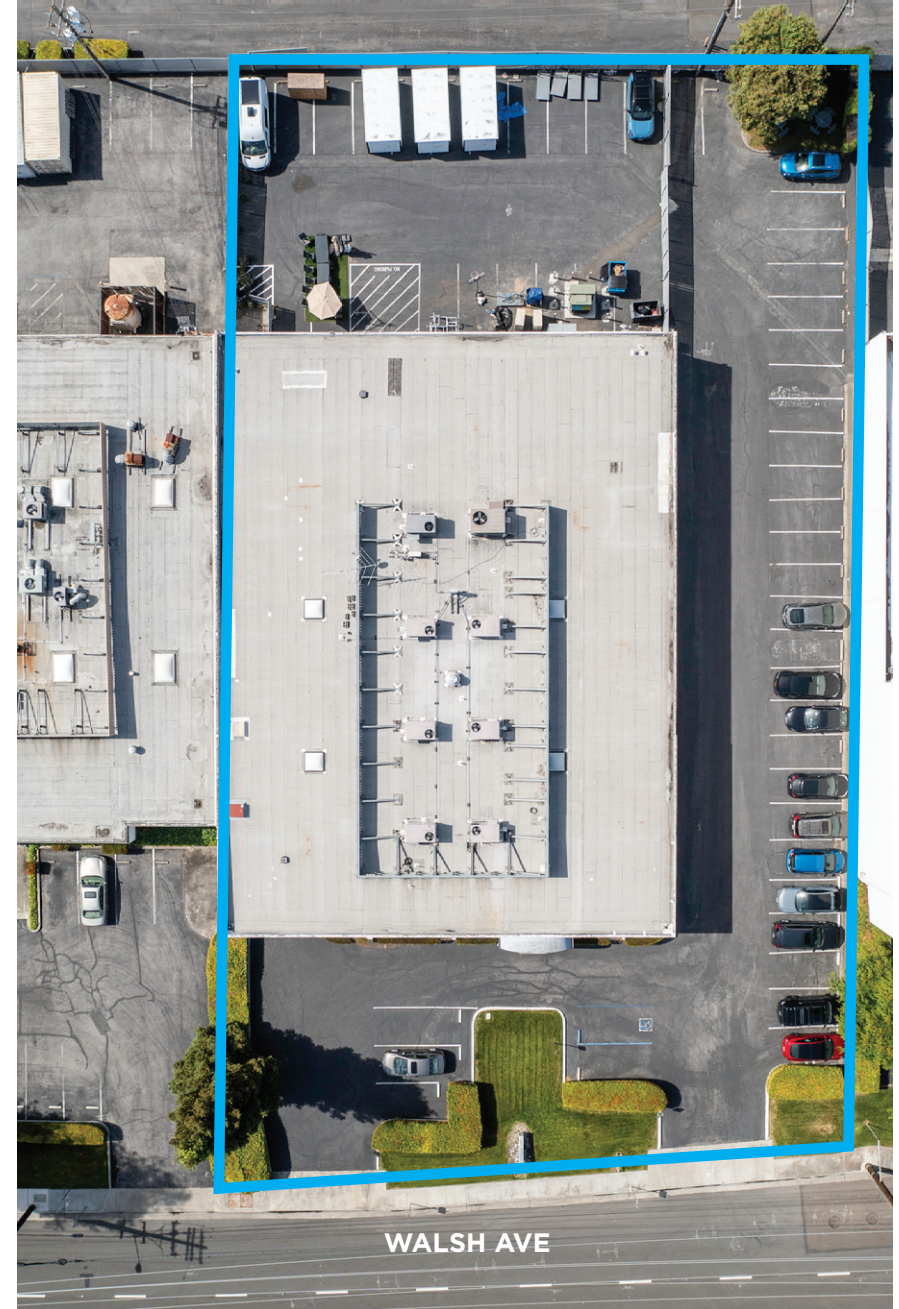
# 2250

## WALSH AVENUE

SANTA CLARA, CA

### PROPERTY HIGHLIGHTS

- ±13,068 SF R&D/Flex Building
- Available September 1, 2025
- Upgraded Power 3,000 Amps @ 480V
- 95% Drop Ceiling w/ 10'-12' Ceiling Heights
- Secured Fenced Yard
- 2 Grade Level Doors
- Building and Monument Signage Available
- Across from Nvidia's HQ
- Easy Access to Santa Clara Square Retail Amenities



#### WALT STEPHENSON

+1 408 615 3458

walt.stephenson@cushwake.com

Lic#01793438

#### NICK LAZZARINI

+1 408 615 3410

nick.lazzarini@cushwake.com

Lic#01788935

#### JACOB BIDER

+1 408 572 4138

jacob.bider@cushwake.com

Lic#02110355

300 Santana Row, Fifth Floor  
San Jose, California 95128

P +1 408 615 3400

[www.cushmanwakefield.com](http://www.cushmanwakefield.com)





# 2250

## WALSH AVENUE

SANTA CLARA, CA



## PROJECT PICTURES



### WALT STEPHENSON

+1 408 615 3458

walt.stephenson@cushwake.com

Lic#01793438

### NICK LAZZARINI

+1 408 615 3410

nick.lazzarini@cushwake.com

Lic#01788935

### JACOB BIDER

+1 408 572 4138

jacob.bider@cushwake.com

Lic#02110355

300 Santana Row, Fifth Floor

San Jose, California 95128

P +1 408 615 3400

[www.cushmanwakefield.com](http://www.cushmanwakefield.com)

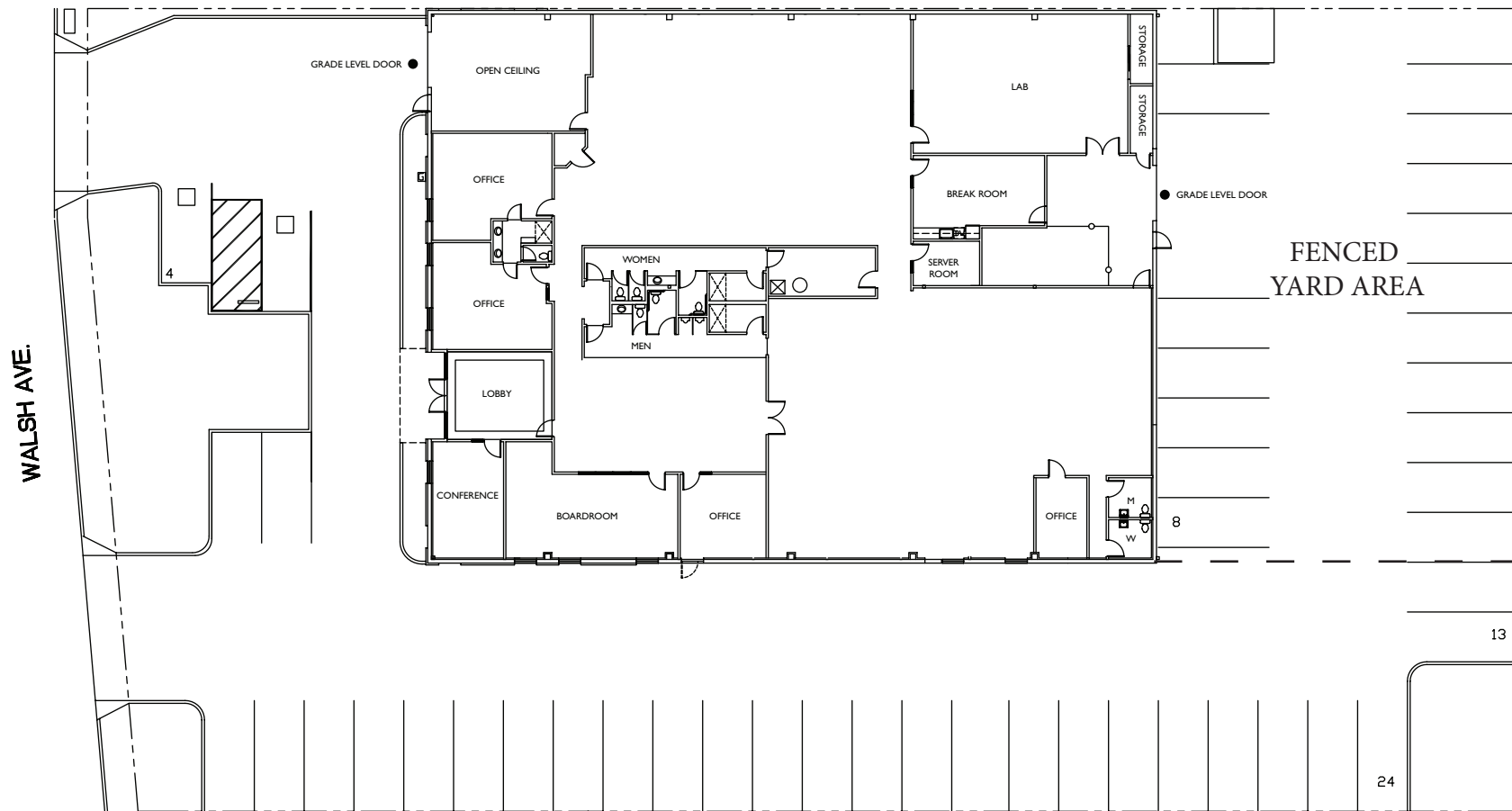


# 2250

## WALSH AVENUE

SANTA CLARA, CA

## SITE PLAN



### WALT STEPHENSON

+1 408 615 3458

walt.stephenson@cushwake.com

Lic#01793438

### NICK LAZZARINI

+1 408 615 3410

nick.lazzarini@cushwake.com

Lic#01788935

### JACOB BIDER

+1 408 572 4138

jacob.bider@cushwake.com

Lic#02110355

300 Santana Row, Fifth Floor  
San Jose, California 95128

P +1 408 615 3400

www.cushmanwakefield.com





# 2250 WALSH AVENUE SANTA CLARA, CA

## AMENITIES MAP



### WALT STEPHENSON

+1 408 615 3458

walt.stephenson@cushwake.com

Lic#01793438

### NICK LAZZARINI

+1 408 615 3410

nick.lazzarini@cushwake.com

Lic#01788935

### JACOB BIDER

+1 408 572 4138

jacob.bider@cushwake.com

Lic#02110355

300 Santana Row, Fifth Floor  
San Jose, California 95128

P +1 408 615 3400

www.cushmanwakefield.com

