

1401

PARKMOOR AVE

SAN JOSE | CA



FULL BUILDING FOR LEASE | DIVISIBLE TO $\pm 2,126$ SF

MIKI CORREA | +1 408 642 0826 | miki.correa@cushwake.com | LIC #01718959
SCOTT O'BRIEN | +1 650 320 0296 | scott.obrien@cushwake.com | LIC #01339087



PROJECT HIGHLIGHTS



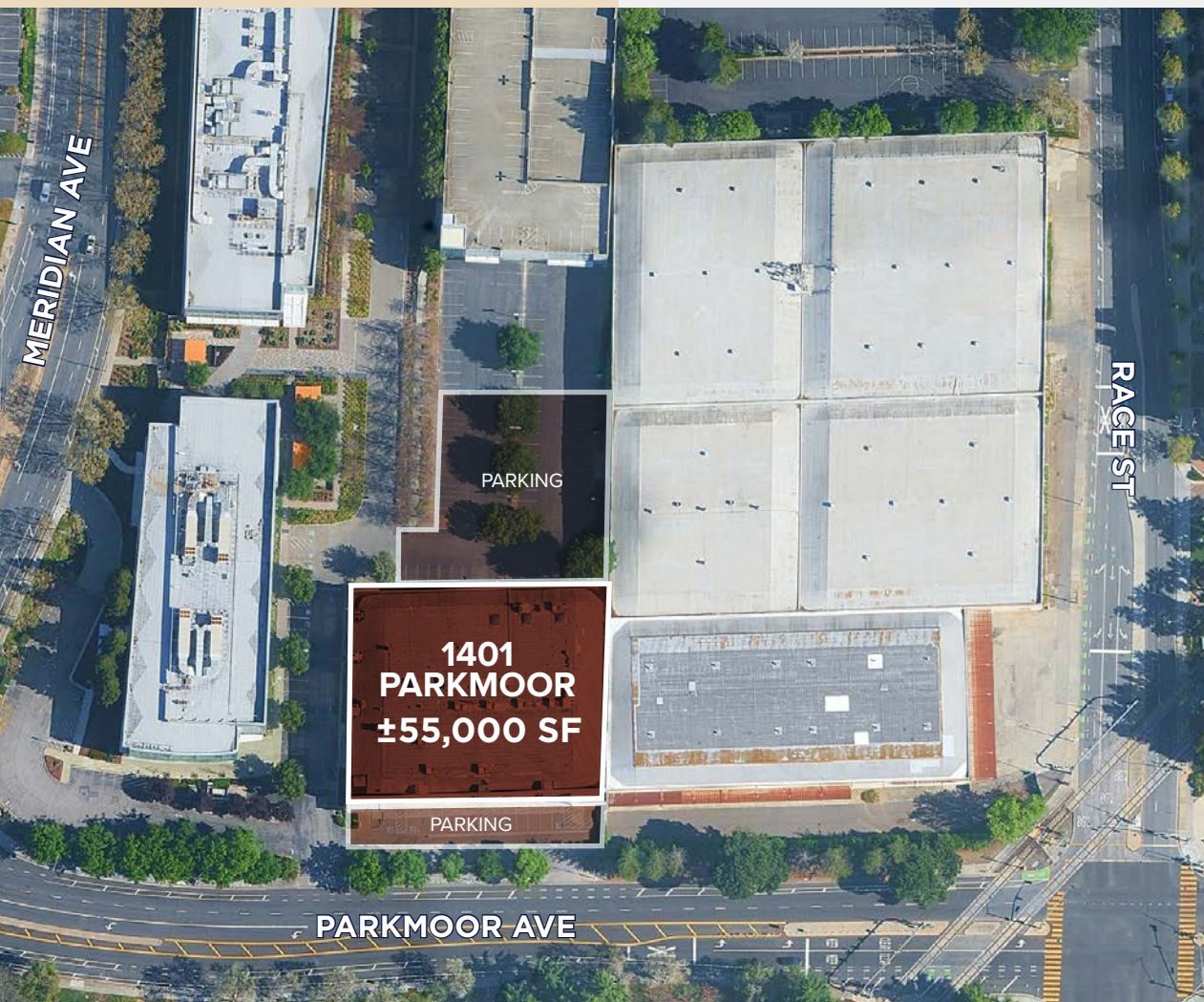
± 55,000 RSF

Available for lease

DIVISIBLE BY SUITE

To approximately. ±2,126 RSF

- 2 story office building
- Central location in the heart of San Jose
- Perfect for Office, Nonprofits, Fitness, Theaters, Churches, Schools
- Short drive to Willow Glen, downtown San Jose and Santana Row
- Easily accessible from Highways 280 and 87
- 60 parking spaces (1.00/1,000 SF)



1401 PARKMOOR

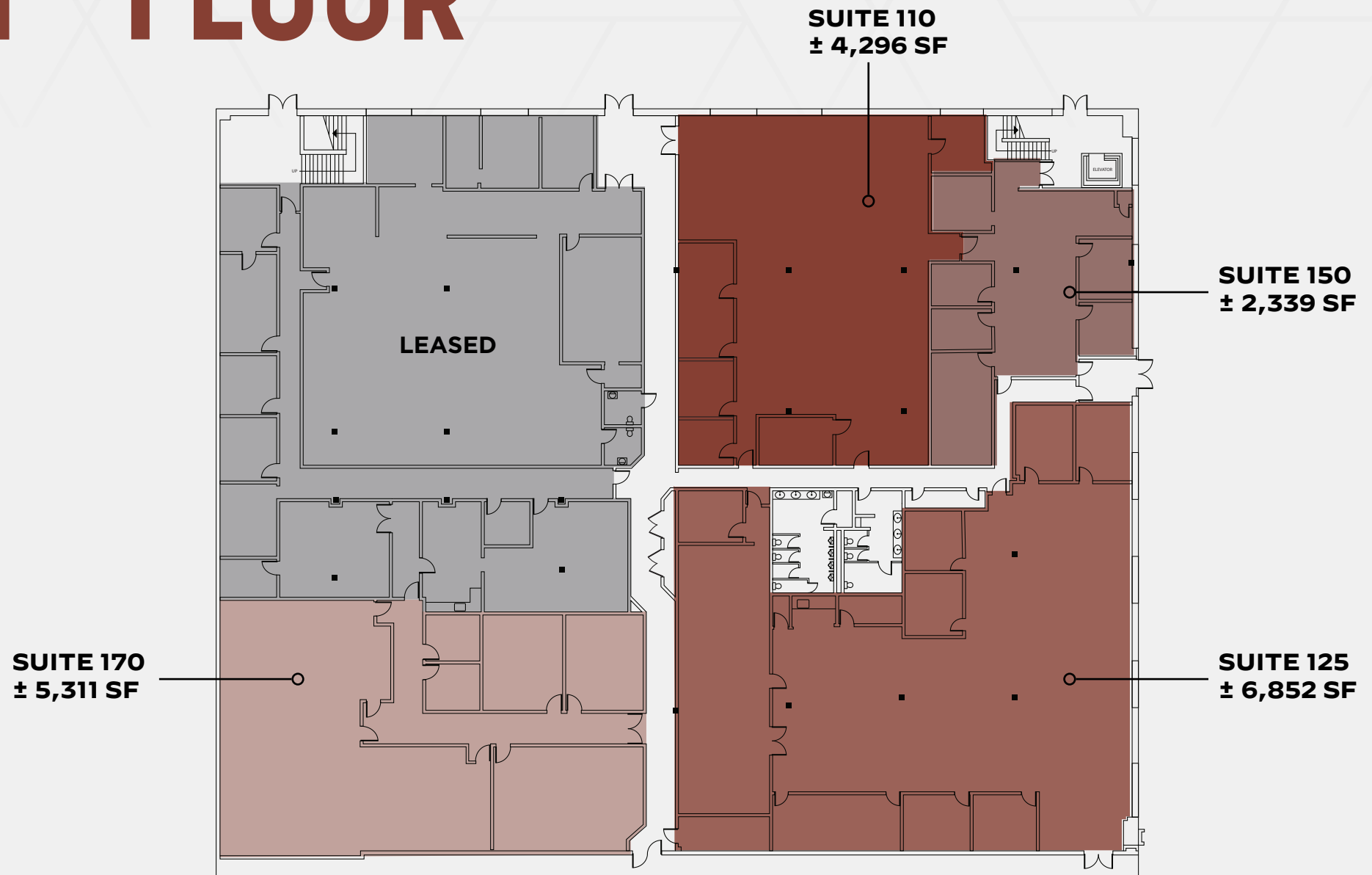
AVAILABILITIES



SUITE	SF	AVAILABLE
SUITE 110	4,296 SF	Now
SUITE 125	6,852 SF	Now
SUITE 150	2,339 SF	Now
SUITE 170	5,311 SF	Now
SUITE 200	3,056 SF	Now
SUITE 208	5,573 SF	Now
SUITE 230	4,645 SF	Now
SUITE 260	6,266 SF	Now
SUITE 290	8,544 SF	Now

1401 PARKMOOR

1ST FLOOR



2ND FLOOR

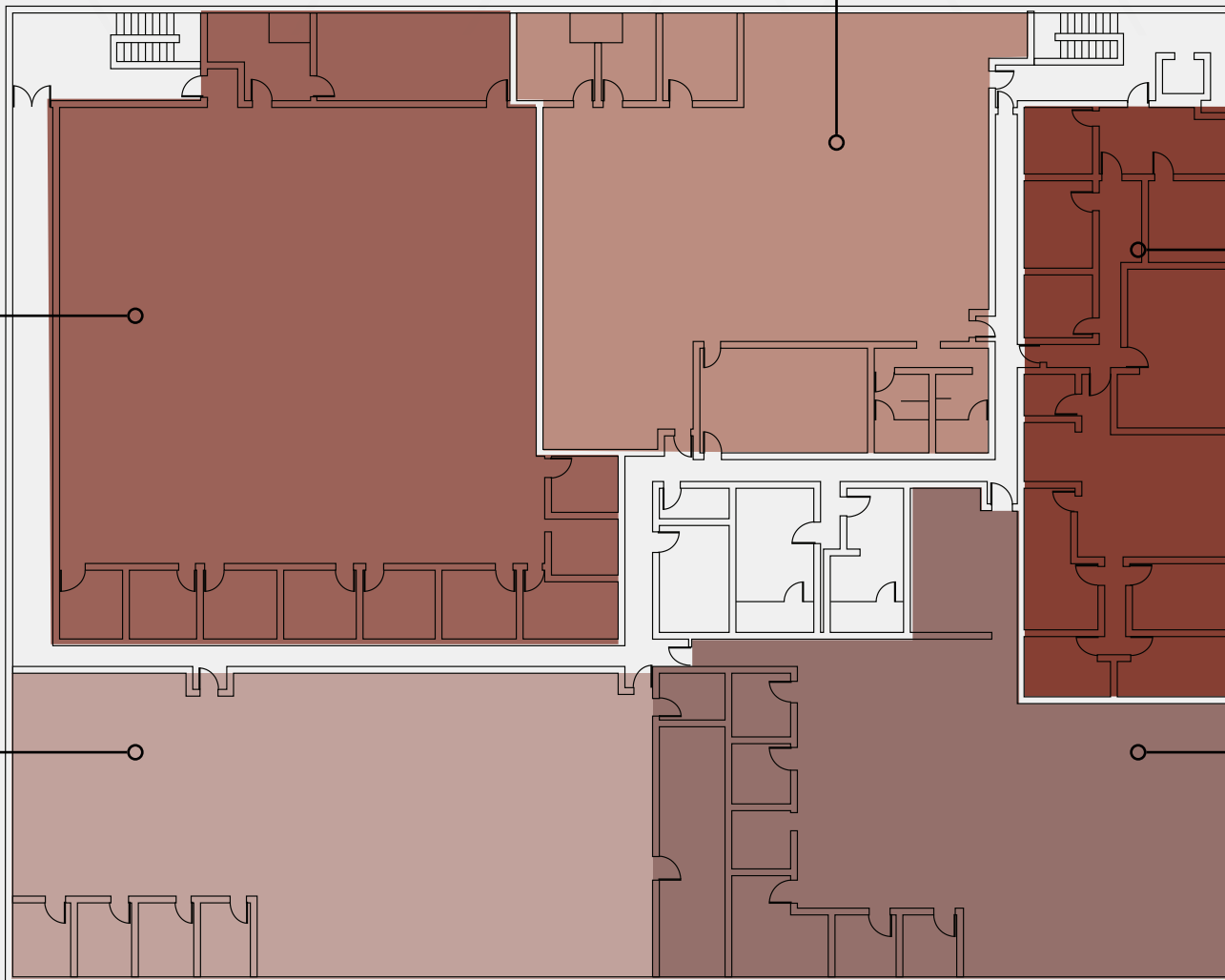
SUITE 208
± 5,573 SF

SUITE 200
± 3,056 SF

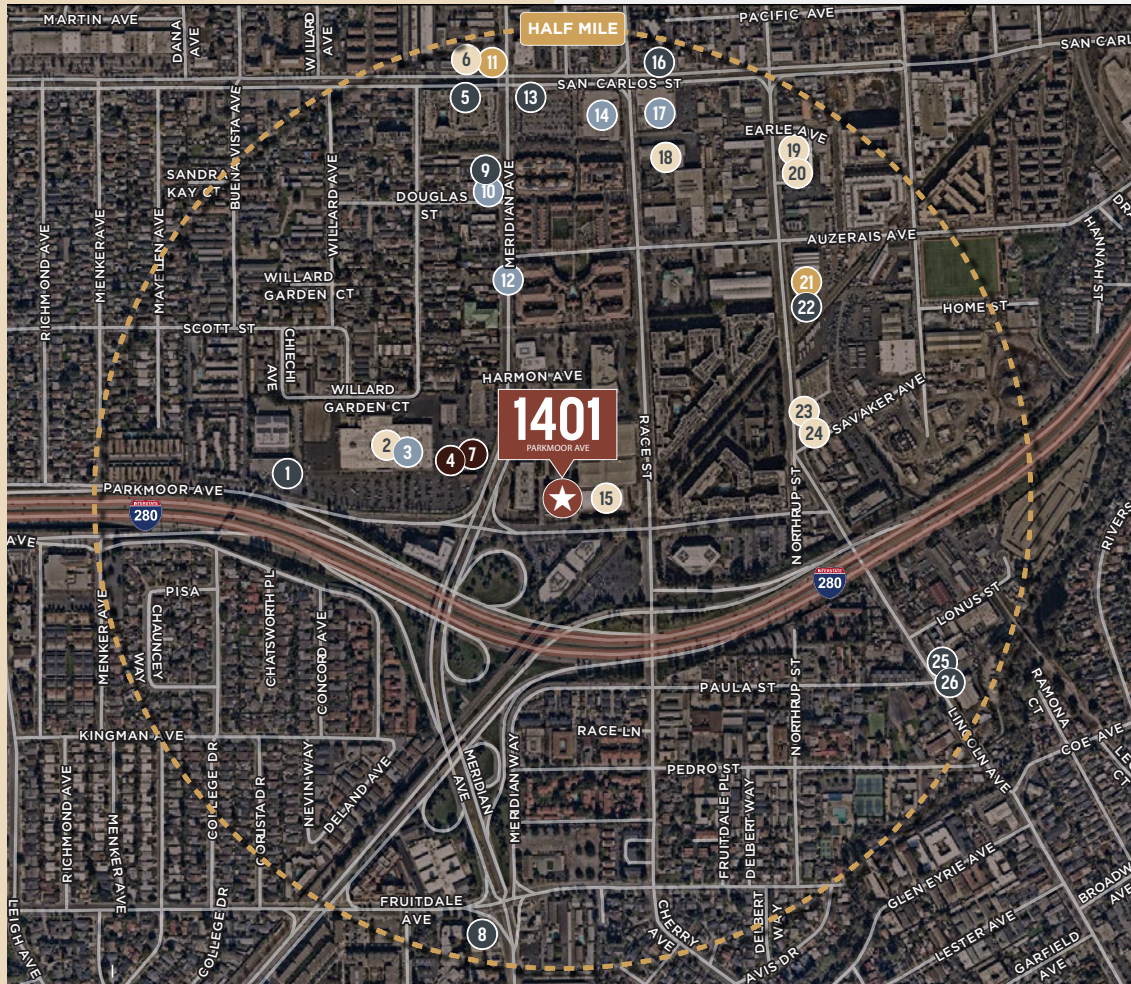
SUITE 290
± 8,544 SF

SUITE 260
± 6,266 SF

SUITE 230
± 4,645 SF



AMENITY MAP

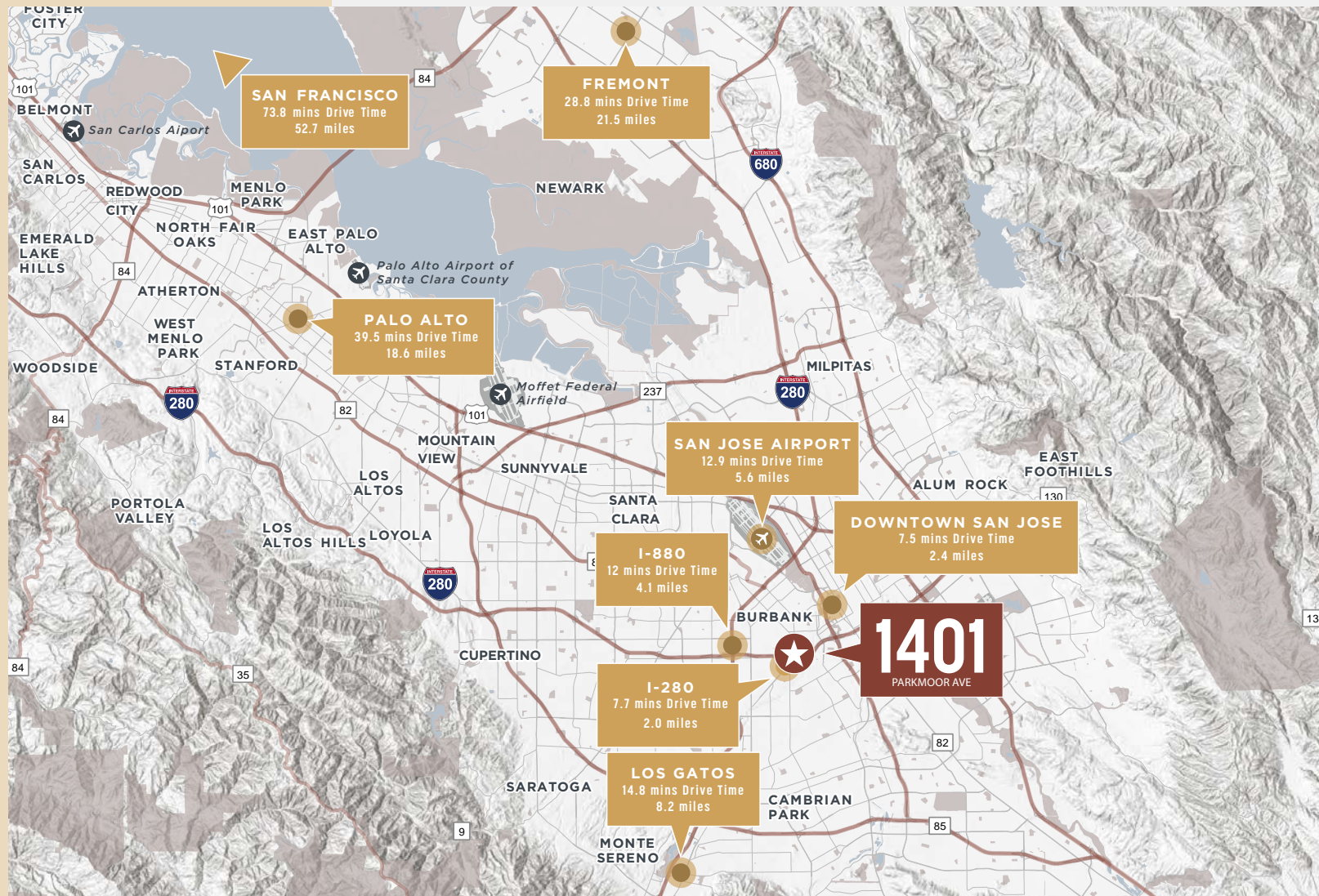


- Coffee/Tea
- Retail
- Fitness
- Grocery
- Restaurants

- | | |
|---------------------------------|--|
| 1 El Bombero 408 | 15 Can Am Elite Badminton and Sports Academy |
| 2 24 Hour Fitness | 16 Gojo Ethiopian Restaurant |
| 3 FoodMaxx Supermarkets | 17 Smart & Final |
| 4 Cycle Gear | 18 California Sports Center Race St |
| 5 The Breakfast Club | 19 Crossfit Silicon Valley |
| 6 TrueScore Inc | 20 StretchFit |
| 7 Big O Tires | 21 Chromatic Coffee |
| 8 Subway | 22 Fire and Rice |
| 9 My Hero Kitchen | 23 Crossfit X Treme Athletics |
| 10 Yawh | 24 X Treme Athletics Maddox Method |
| 11 Sunright Tea Studio San Jose | 25 Sweetdragon Baking Company |
| 12 Food Corner | 26 Taqueria Jonathan |
| 13 McDonald's | |
| 14 Safeway | |

1401 PARKMOOR

DRIVE TIME MAP





FOR MORE INFORMATION, PLEASE CONTACT:

MIKI CORREA | +1 408 642 0826 | miki.correa@cushwake.com | LIC #01718959

SCOTT O'BRIEN | +1 650 320 0296 | scott.obrien@cushwake.com | LIC #01339087



©2025 Cushman & Wakefield. All rights reserved. The information contained in this communication is strictly confidential. This information has been obtained from sources believed to be reliable but has not been verified. NO WARRANTY OR REPRESENTATION, EXPRESS OR IMPLIED, IS MADE AS TO THE CONDITION OF THE PROPERTY (OR PROPERTIES) REFERENCED HEREIN OR AS TO THE ACCURACY OR COMPLETENESS OF THE INFORMATION CONTAINED HEREIN, AND SAME IS SUBMITTED SUBJECT TO ERRORS, OMISSIONS, CHANGE OF PRICE, RENTAL OR OTHER CONDITIONS, WITHDRAWAL WITHOUT NOTICE, AND TO ANY SPECIAL LISTING CONDITIONS IMPOSED BY THE PROPERTY OWNER(S). ANY PROJECTIONS, OPINIONS OR ESTIMATES ARE SUBJECT TO UNCERTAINTY AND DO NOT SIGNIFY CURRENT OR FUTURE PROPERTY PERFORMANCE.