

# Butler's Run

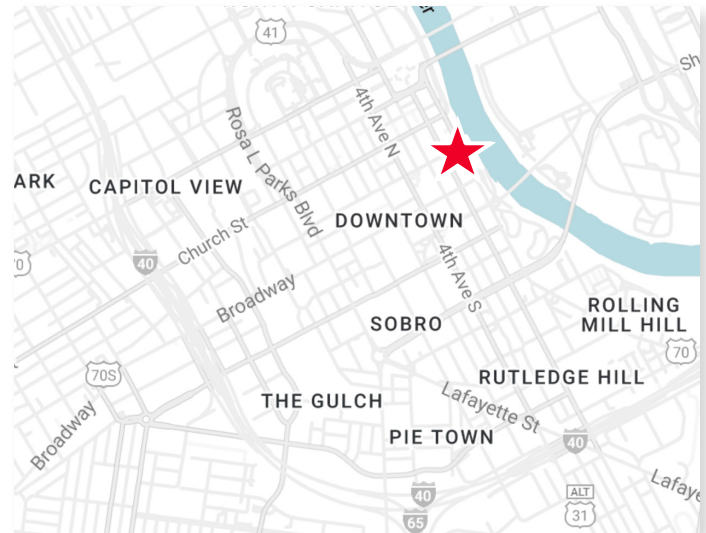
138 2nd Ave N | Suite 201  
Nashville, TN 37201

**5,740 SF AVAILABLE**



## PROPERTY HIGHLIGHTS

- Creative Office on 2nd Avenue
- Second Floor Views of the River and East Bank
- Revitalization of 2nd Avenue Underway
- Walkability to Broadway Amenities
- Plug and Play Space
- Furniture Available



## CONTACTS:

### Rich Rieck

Director

+1 615 301 2884

[rich.rieck@cushwake.com](mailto:rich.rieck@cushwake.com)

### Crews Johnston

Executive Director

+1 615 301 2901

[crews.johnston@cushwake.com](mailto:crews.johnston@cushwake.com)

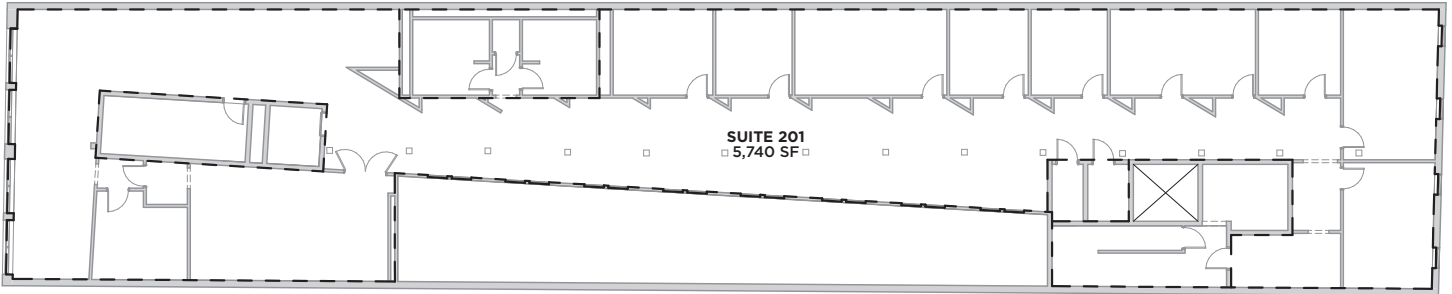
### Office Address:

1033 Demonbreun St | Suite 600

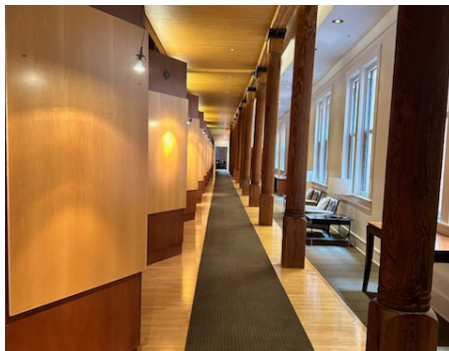
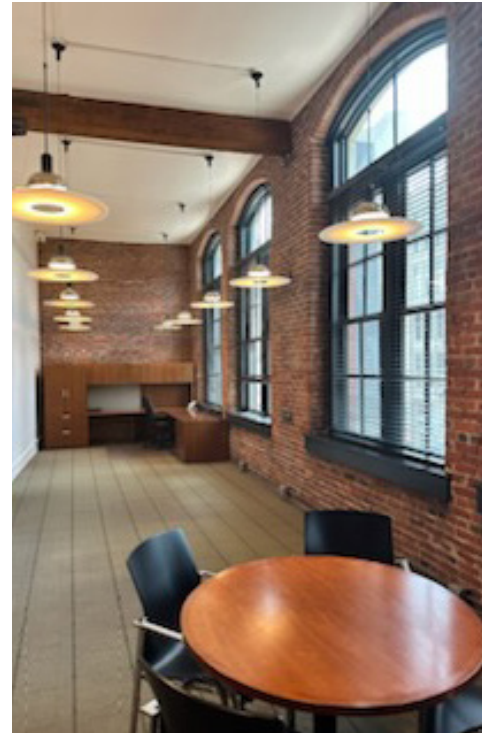
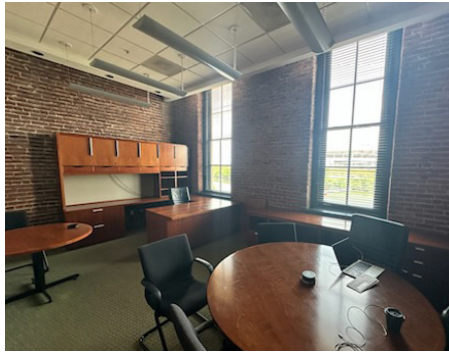
Nashville, TN 37202

+1 615 301 2800

## FLOOR PLAN | SUITE 201 - 5,740 SF



## PHOTOGRAPHY



## CONTACTS:

**Rich Rieck**  
Director  
+1 615 301 2884  
rich.rieck@cushwake.com

**Crews Johnston**  
Executive Director  
+1 615 301 2901  
crews.johnston@cushwake.com

**Office Address:**  
1033 Demonbreun St | Suite 600  
Nashville, TN 37202  
+1 615 301 2800