



247,388 SF REMAINING

5025

CREEK
BANK
ROAD

///
Configurations
down to
24,000 sf
available
///

PLUG IN & POWER UP The Campus @ Creekbank

- //// FLEXIBLE SUBLEASE TERMS
- //// ADJUSTABLE SIZES & CONFIGURATIONS
- //// EXTENSIVE ON-SITE AMENITY NETWORK



PLUG INTO THE CAMPUS & POWER UP YOUR WORKFORCE

PLAY
VIDEO



& Discover the
Campus @ Creekbank



» 5025

CREEKBANK ROAD

TOTAL — 247,388 sf remaining
Floorplates are approx. 74,000 sf
Divisible to 24,000 sf

➔ [VIEW DETAILS](#)



A POWERED UP CAMPUS OFFICE LOCATION

5025 CREEKBANK ROAD

Today's future forward companies recognize that the dynamics that accelerate decisions, achieve innovation, or generate ideas hinge on collaboration between groups. The campus setting and accompanying amenities at 5025 Creekbank Road are perfectly suited to facilitate those connections and cooperation. A day on a corporate campus is filled with positive interactions that fuel cooperation and collaboration, moving your organization beyond good ideas toward real innovation.

BUILDING DETAILS

5025 Creekbank Road – Total – 247,388 sf

→ Floorplates are approx. 74,000 sf

• 2nd Floor: Approx. 24,150 sf

• 3rd Floor: 74,900 sf

• 4th Floor: 74,495 sf

• 5th Floor: 73,843 sf

Divisible

can be demised - see floorplans on page 10

→ Impressive atrium lobby with security desk onsite

→ Cafeteria space with indoor and outdoor seating with Starbucks in building- can be used for large townhall and event space

→ Building signage opportunities for large user + planned podium signage on Eglinton

PROPERTY INFORMATION

→ Sublease Rate: Negotiable

→ Additional Rent: \$18.20 psf

5025

Integrating an indoor/outdoor aesthetic promotes mental health and a strong creative environment





Elevator lobby area

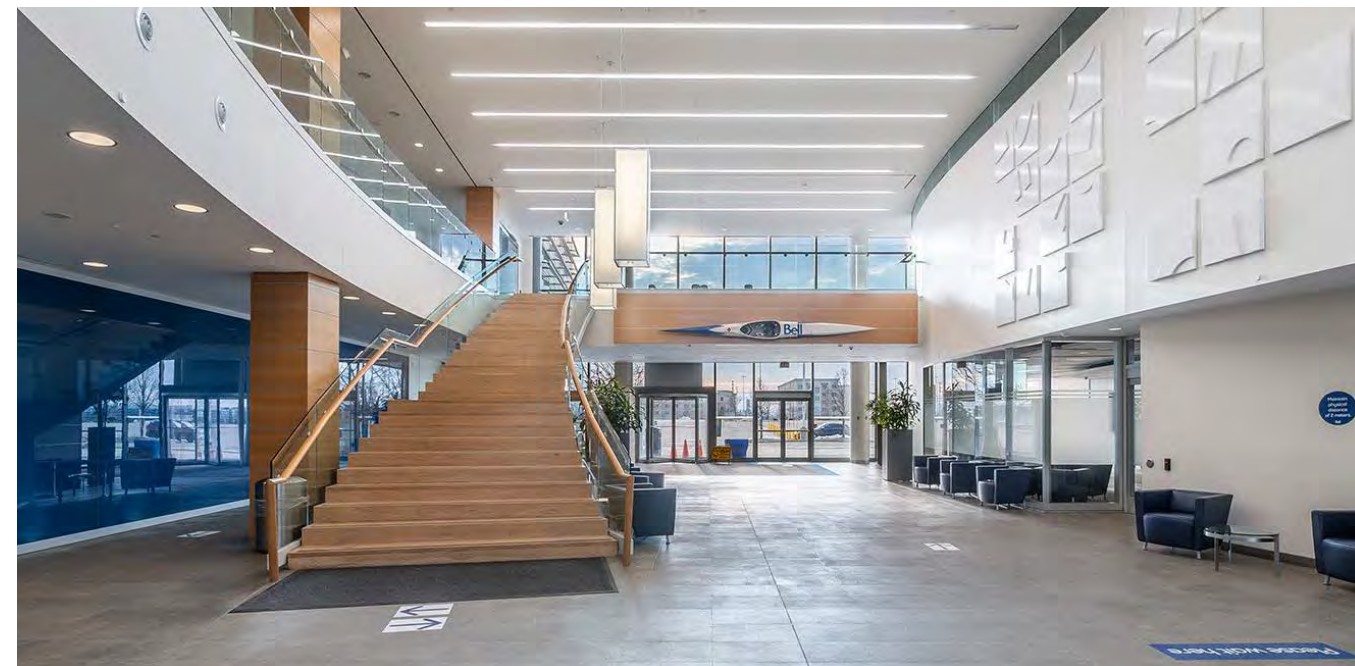


Built out spaces with
furniture in place

Open work stations

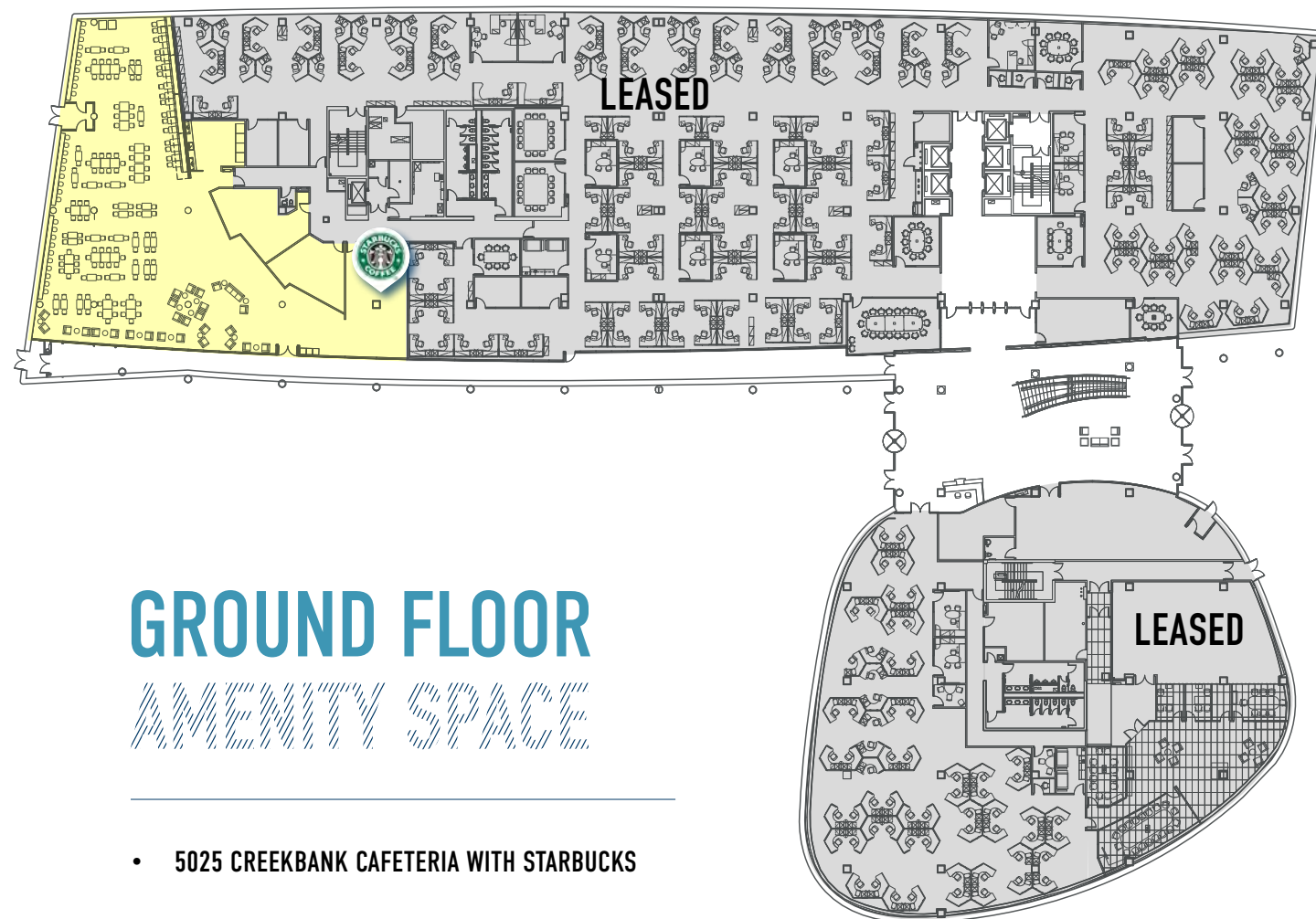


Executive boardroom



Ground floor lobby

5025



GROUND FLOOR

- 5025 CREEKBANK CAFETERIA WITH STARBUCKS
- TOWNHALL SPACE WITH OUTDOOR PATIO FOR EVENTS





////////////////////



///

TOTAL AVAILABLE AREA: 247,388 sf



FLOOR 5 | 73,843 sf Available

FLOOR 4 | 74,495 sf Available

FLOOR 3 | 74,900 sf Available

FLOOR 2 | 24,150 sf Available

— Divisible

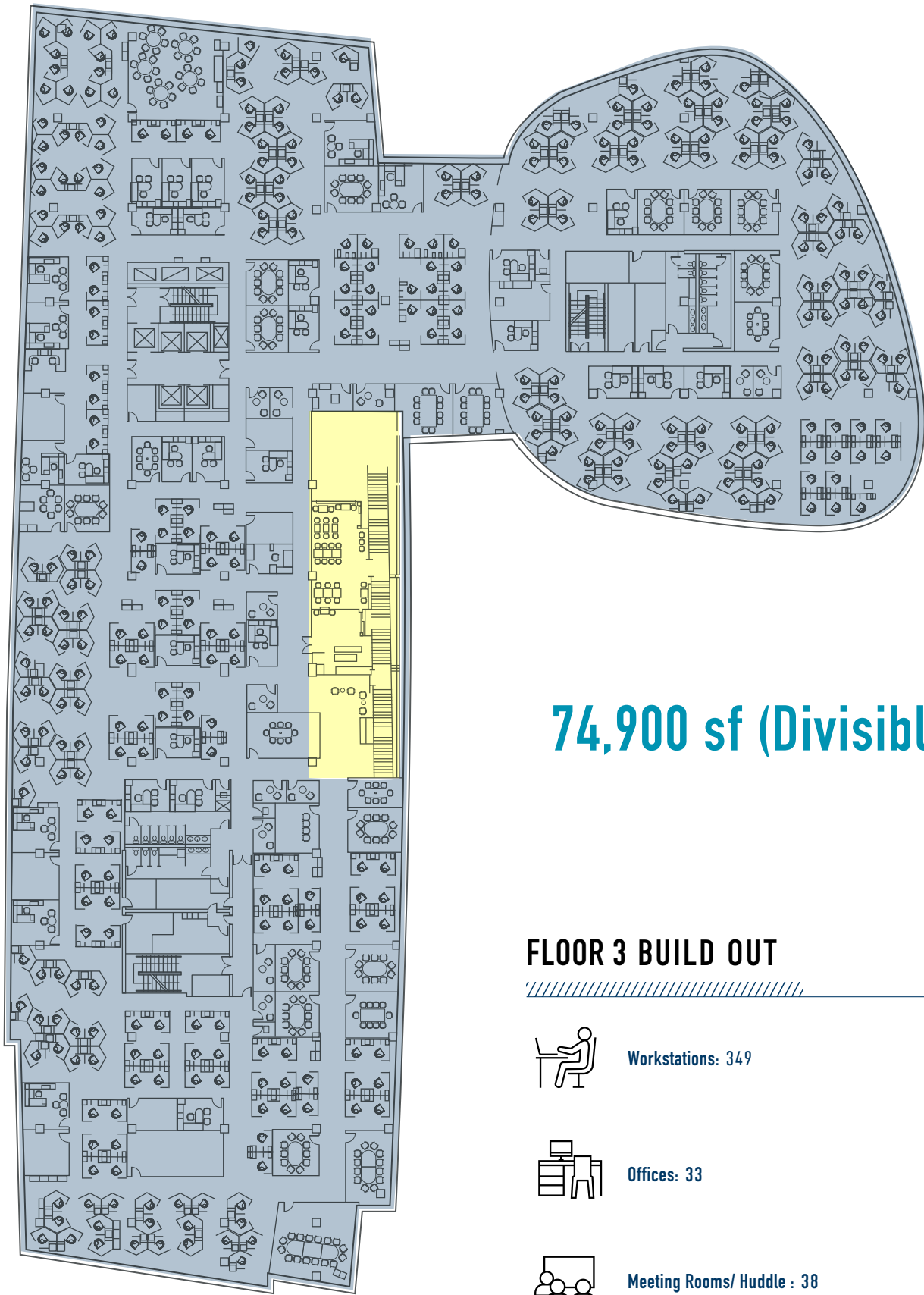
LEASED

AVAILABLE  LEASED  COMMON SPACE 

LEASED

CAFETERIA

LEASED



74,900 sf (Divisible)

FLOOR 3 BUILD OUT



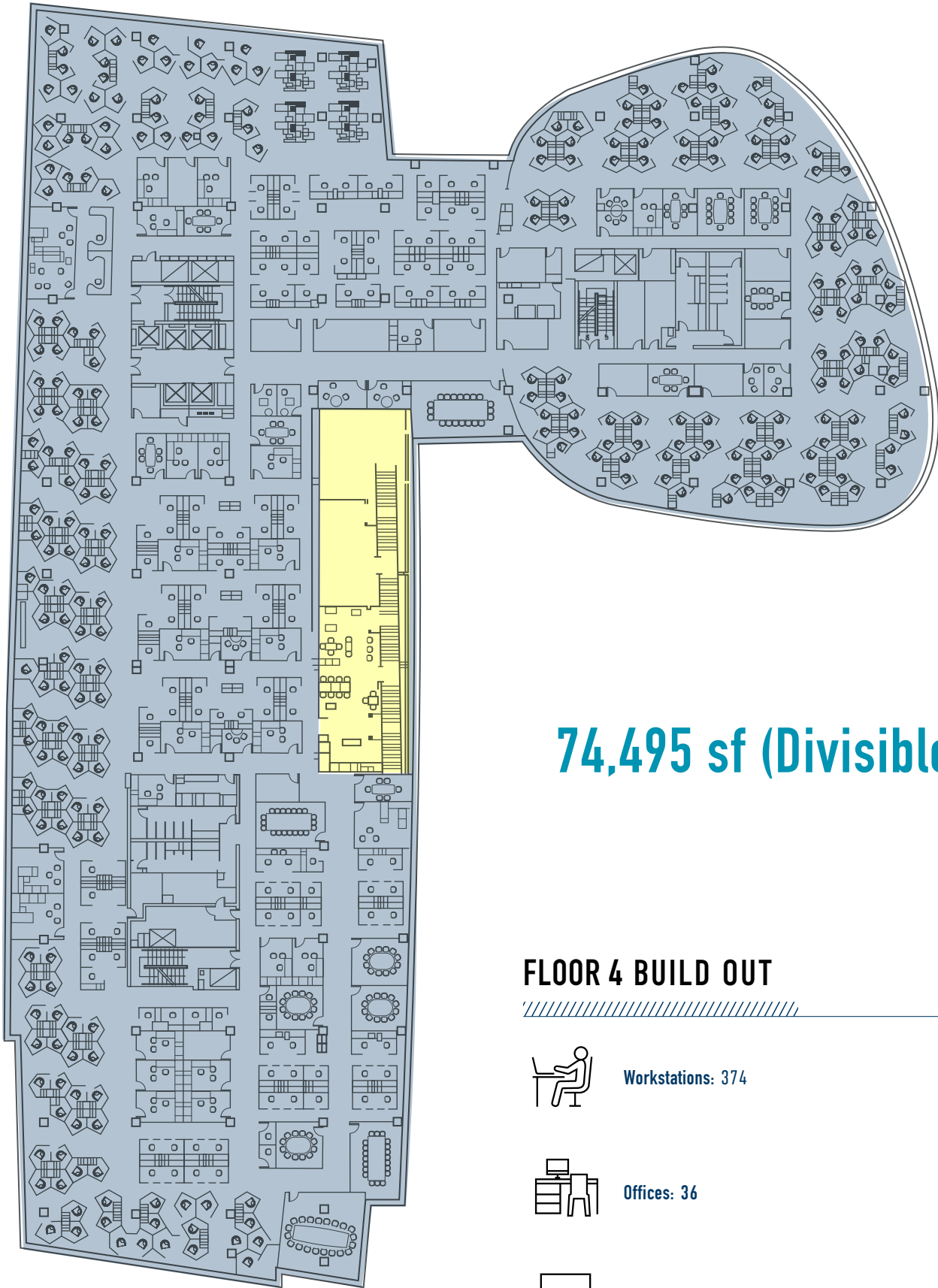
Workstations: 349



Offices: 33



Meeting Rooms/ Huddle : 38



74,495 sf (Divisible)

FLOOR 4 BUILD OUT



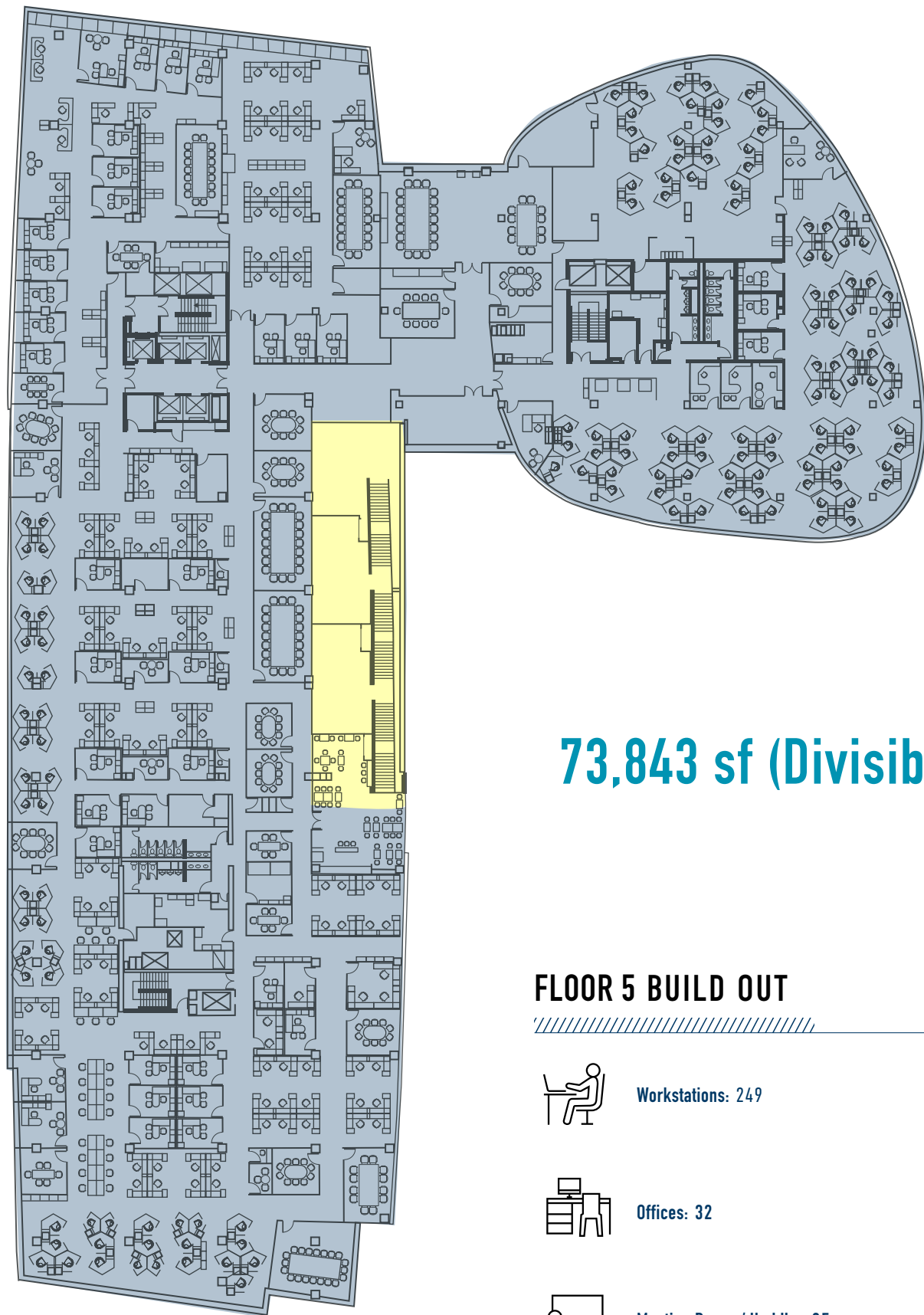
Workstations: 374



Offices: 36



Meeting Rooms/ Huddle : 30



73,843 sf (Divisible)

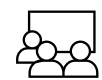
FLOOR 5 BUILD OUT



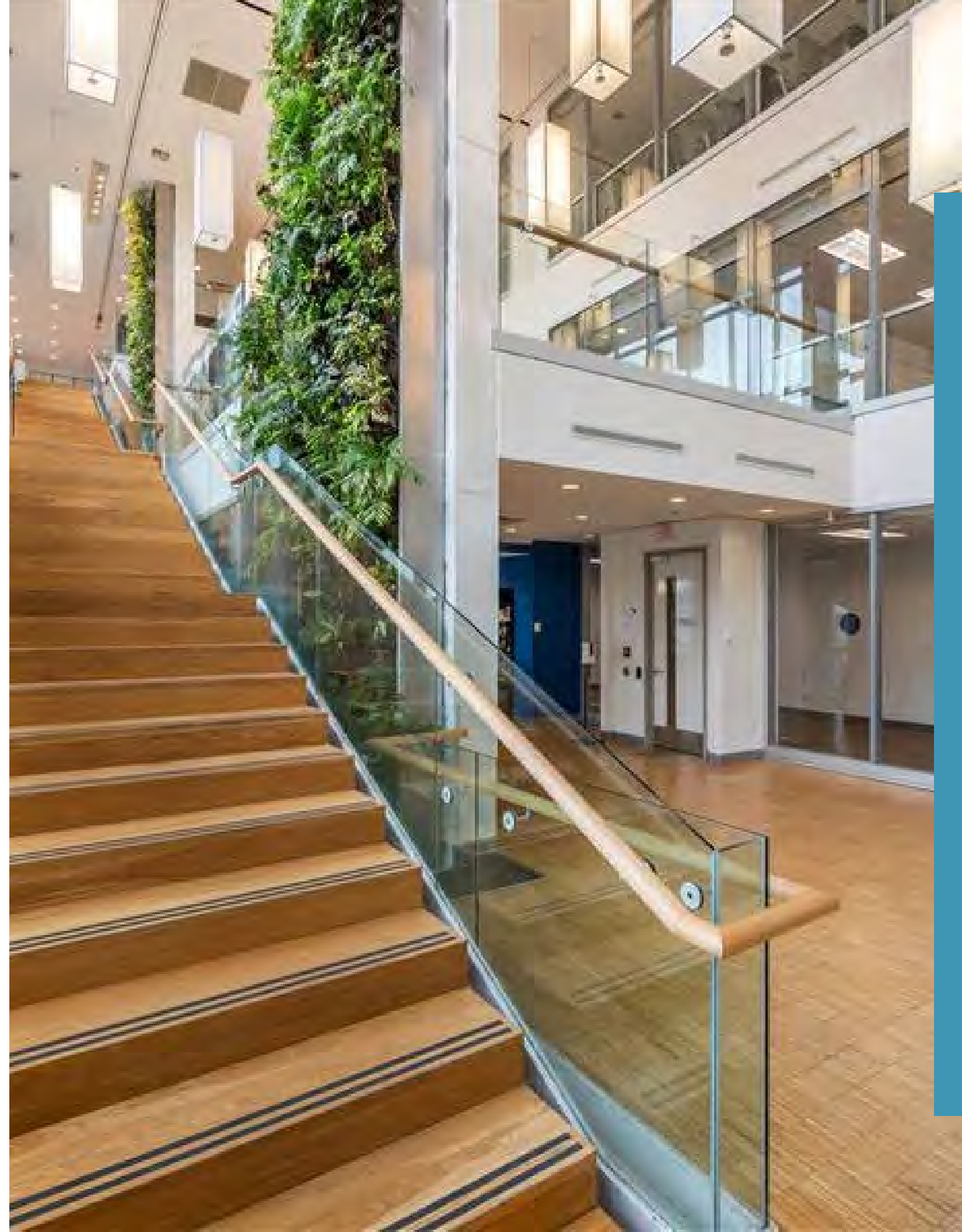
Workstations: 249



Offices: 32



Meeting Rooms/ Huddle : 25



Well positioned to
service international and
regional clients



5025 CREEKBANK ROAD

PLUGGED IN & POWERED UP

LEGEND



MiWay
(Mississauga Bus Transit route)



UP

Union
Pearson
Express

UP Express (Union - Pearson)

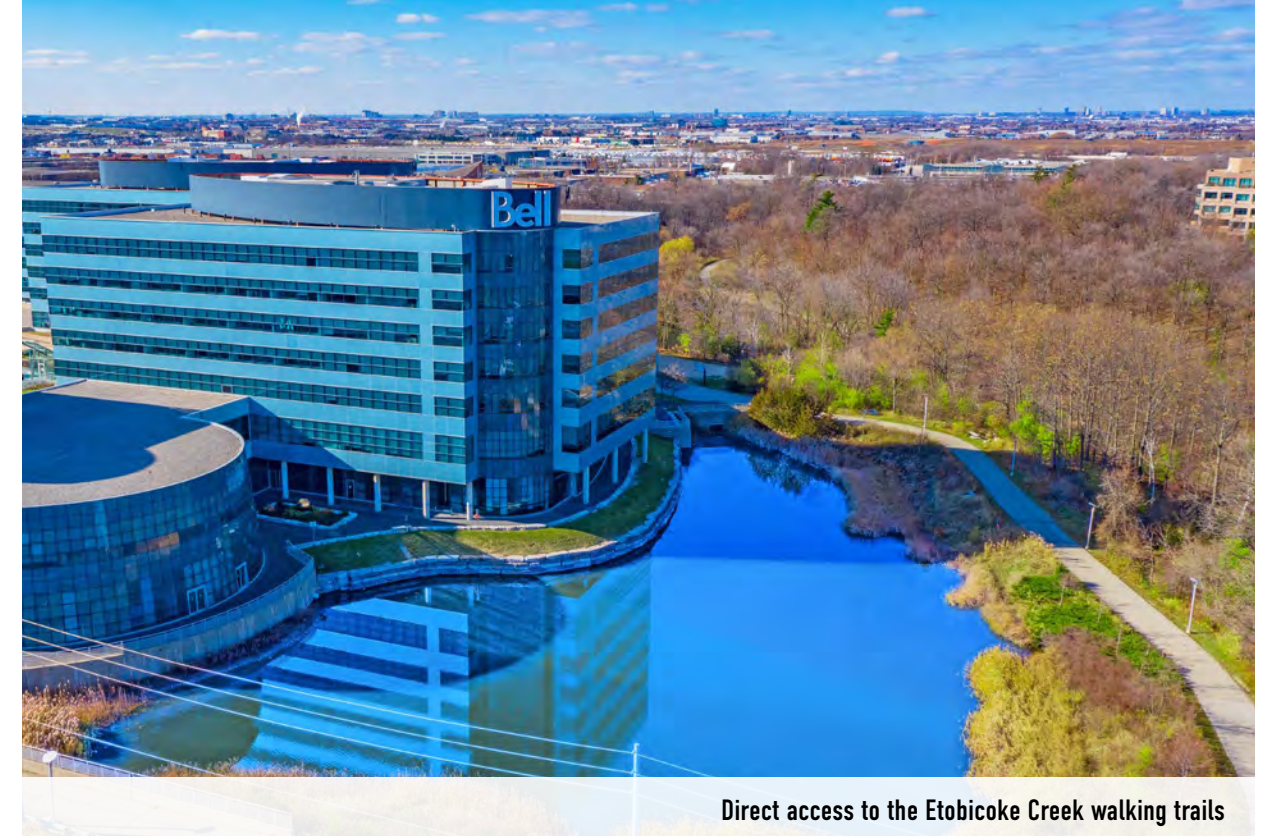


BRT (Mississauga Bus Rapid Transit route/stops)

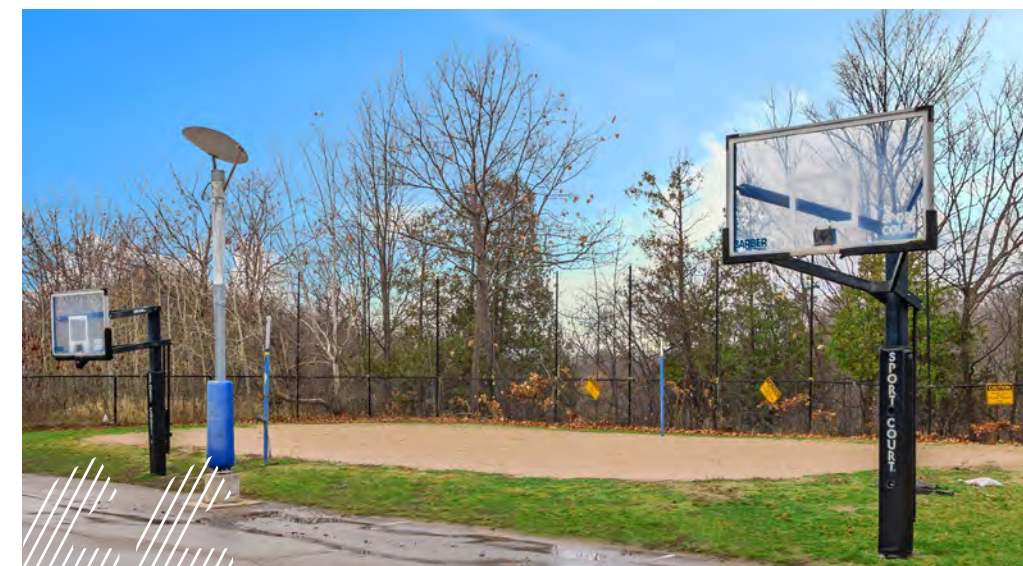


PLUG IN TO A
NEW
WORKLIFE

Campus path system provides outdoor “think spaces” & collaborative areas



Direct access to the Etoibicoke Creek walking trails



Basketball/volleyball courts for employee team building

Proximity to natural greenspace, water, and outdoor amenities stimulates creativity and well-being for employees.



WORK

AMENITIES



The Campus @ Creekbank
has all the amenities a forward
thinking company could provide its
employees and more...



Fitness centre (gym, showers, yoga studio)
with available outdoor fitness areas: basketball
courts, volleyball court, walking trails, pond,
patio courtyard for summertime BBQ's.

AMENITIES

The Campus at Creekbank offers all the amenities to keep your employees energized. From multiple options to fuel your body, to powering up at the gym, Creekbank has it all.

- Two cafeterias with self-serve options and fresh meals prepared on-site
- “Micro-Market” Collaboration Space for casual meetings plus larger conference spaces with 500 capacity



One of two full service food courts



Yoga studio



15,000 SF fitness area



“Micro-market” collaboration space



Ample free underground parking



Dedicated BRT and Miway stop





CREEK
BANK
ROAD

PLUG IN & POWER UP

The Campus @ Creekbank

5025/5115

CREEK BANK ROAD

FOR MORE INFORMATION ON THIS OPPORTUNITY, CONTACT:

PLAY
VIDEO



FAY GOVEAS**

Vice President

905 501 6482

fay.goveas@cushwake.com

KATYA SHABANOVA**

Senior Vice President

416 359 2517

katya.shabanova@cushwake.com

CRAIG TRENHOLM**

Senior Vice President

905 501 6483

Craig.trenholm@cushwake.com

KYRYLO VLADYMYRENKO*

Client Coordinator

905 501 6416

ky.vladymyrenko@cushwake.com



**CUSHMAN &
WAKEFIELD**

Cushman & Wakefield ULC, Brokerage
1 Prologis Boulevard, Suite 300
Mississauga, ON L5W 0G2
cushmanwakefield.com

©2025 Cushman & Wakefield ULC. All rights reserved. The information contained in this communication is strictly confidential. This information has been obtained from sources believed to be reliable but has not been verified. NO WARRANTY OR REPRESENTATION, EXPRESS OR IMPLIED, IS MADE AS TO THE CONDITION OF THE PROPERTY (OR PROPERTIES) REFERENCED HEREIN OR AS TO THE ACCURACY OR COMPLETENESS OF THE INFORMATION CONTAINED HEREIN, AND SAME IS SUBMITTED SUBJECT TO ERRORS, OMISSIONS, CHANGE OF PRICE, RENTAL OR OTHER CONDITIONS, WITHDRAWAL WITHOUT NOTICE, AND TO ANY SPECIAL LISTING CONDITIONS IMPOSED BY THE PROPERTY OWNER(S). ANY PROJECTIONS, OPINIONS OR ESTIMATES ARE SUBJECT TO UNCERTAINTY AND DO NOT SIGNIFY CURRENT OR FUTURE PROPERTY PERFORMANCE.