

INDUSTRIAL UNIT  
FOR LEASE  
**3,109 SF**



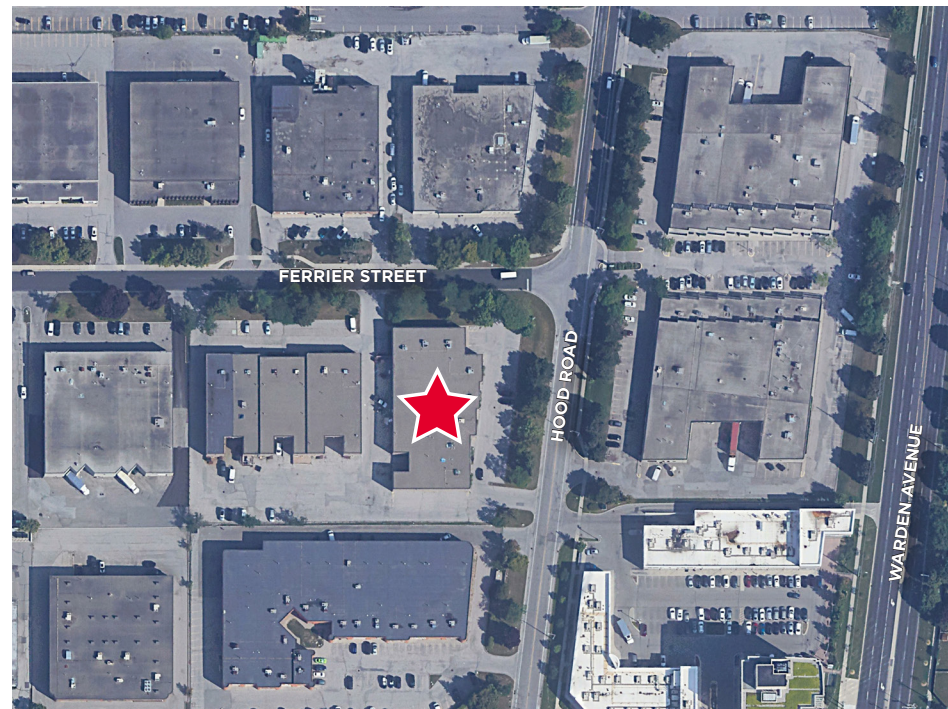
230 HOOD ROAD  
**MARKHAM, ON**



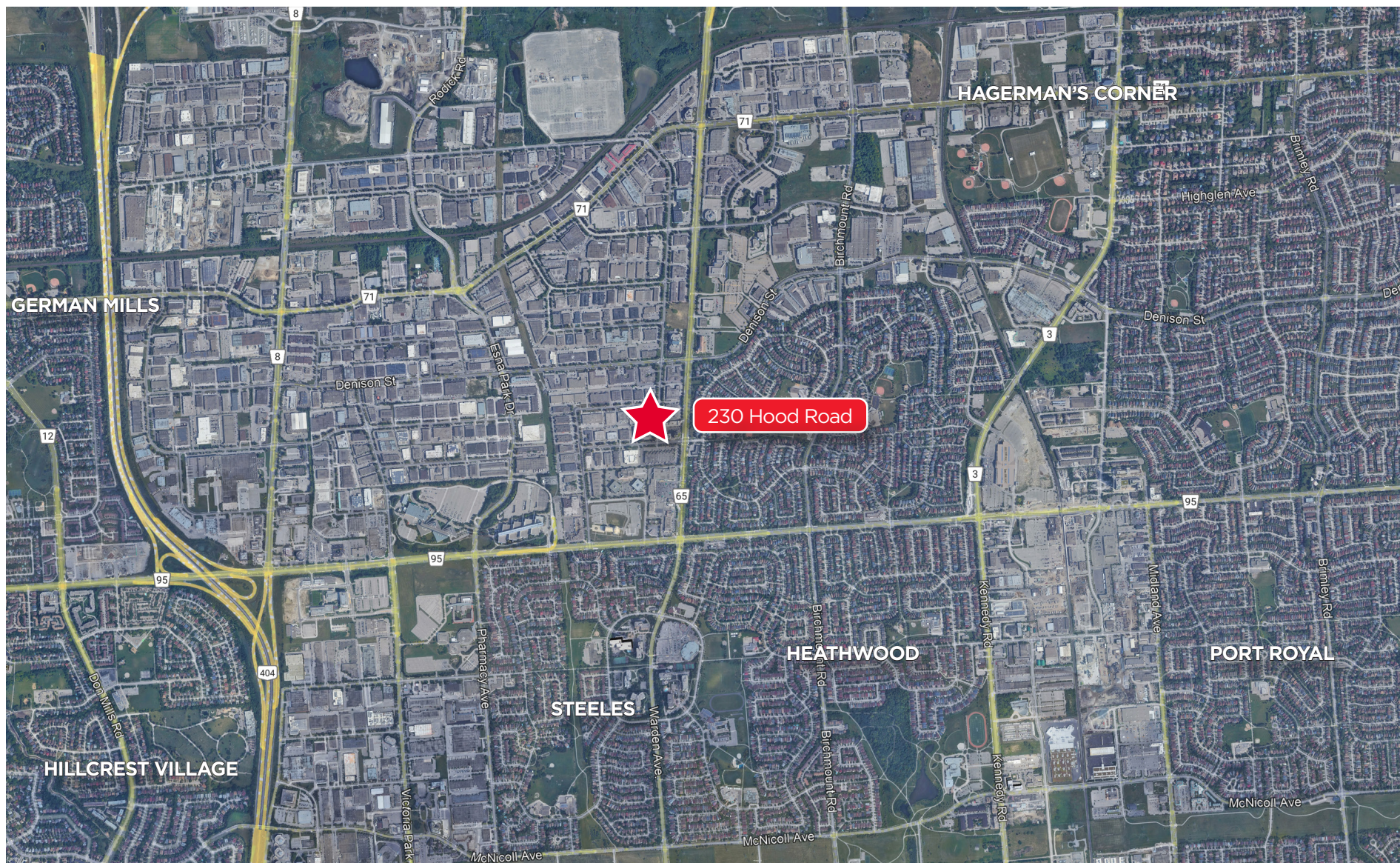
230 HOOD ROAD, MARKHAM, ON

# PROPERTY HIGHLIGHTS

Building Size:	3,109 SF + Mezzanine (1,260 SF) 25% Office and Showroom
Net Rent:	\$19.95 PSF
Current TMI:	\$5.39 PSF
Occupancy:	July 1 <sup>st</sup> , 2025
Clear Height:	18'
Shipping:	1 truck level door



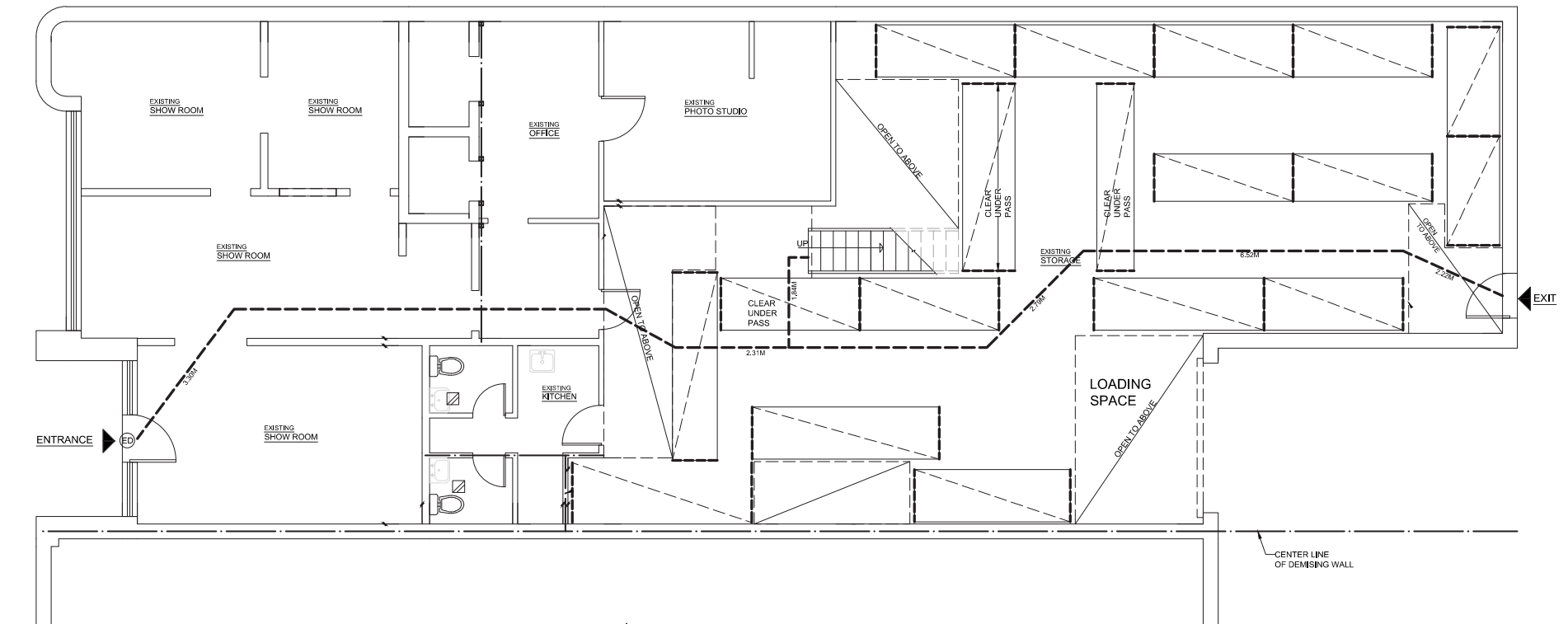




AERIAL  
MAP



# FIRST FLOORPLAN







# CONTACT INFORMATION

## JORDAN MUSTARD

Vice President

Sales Representative

+1 647 920 0544

[jordan.mustard@cushwake.com](mailto:jordan.mustard@cushwake.com)



©2025 Cushman & Wakefield. All rights reserved. The information contained in this communication is strictly confidential. This information has been obtained from sources believed to be reliable but has not been verified. NO WARRANTY OR REPRESENTATION, EXPRESS OR IMPLIED, IS MADE AS TO THE CONDITION OF THE PROPERTY (OR PROPERTIES) REFERENCED HEREIN OR AS TO THE ACCURACY OR COMPLETENESS OF THE INFORMATION CONTAINED HEREIN, AND SAME IS SUBMITTED SUBJECT TO ERRORS, OMISSIONS, CHANGE OF PRICE, RENTAL OR OTHER CONDITIONS, WITHDRAWAL WITHOUT NOTICE, AND TO ANY SPECIAL LISTING CONDITIONS IMPOSED BY THE PROPERTY OWNER(S). ANY PROJECTIONS, OPINIONS OR ESTIMATES ARE SUBJECT TO UNCERTAINTY AND DO NOT SIGNIFY CURRENT OR FUTURE PROPERTY PERFORMANCE.