

PRICE REDUCED



TITAN BUILDING

10358 - 172 Street, Edmonton, AB

HIGH QUALITY ATTRACTIVE SPACE | EXCELLENT OWNERSHIP OPPORTUNITY

Cushman & Wakefield Edmonton is independently owned and operated / A Member of the Cushman & Wakefield Alliance. No warranty or representation, express or implied, is made to the accuracy or completeness of the information contained herein, and same is submitted subject to errors, omissions, change of price/rental or other conditions, withdrawal without notice, and to any special listing conditions imposed by the property owner(s). As applicable, we make no representation as to the condition of the property (or properties) in question. June 2025

Nicholas Hrebien
Senior Associate
780-298-9940
nicholas.hrebien@cwedmonton.com

CUSHMAN & WAKEFIELD
Edmonton
Suite 2700, TD Tower
10088 - 102 Avenue
Edmonton, AB T5J 2Z1
www.cwedm.com

PROPERTY DETAILS

LEGAL ADDRESS Plan 8021656, Block 10, Lot 13

YEAR BUILT 1979

ZONING IB (Industrial Business Zone)

BUILDING SIZE
Main Floor: 3,200 SF
Second Floor: 3,200 SF
TOTAL: 6,400 SF

LOT SIZE 12,003 SF

FURNITURE Negotiable

PARKING 20 surface stalls

PROPERTY TAXES \$26,285.95 (2024)

REDUCED SALE PRICE \$1,350,000.00



PROPERTY HIGHLIGHTS

Strategically located in a well-established commercial hub of West Edmonton, this property offers exceptional accessibility via Stony Plain Road, 178 Street, and 170 Street. Ample on-site parking is available for both staff and visitors.

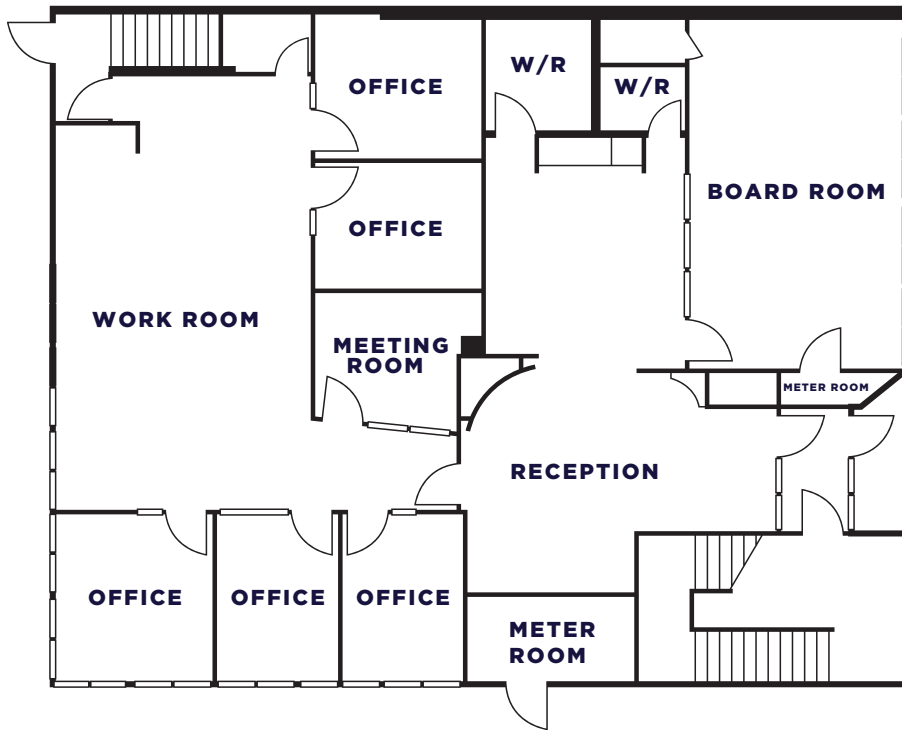
The main floor features a modern, secure front entrance leading into a welcoming reception area that controls access to both levels. This floor includes several private offices, a glass-enclosed boardroom, open workspaces, a lounge/lunchroom, private washrooms, and dedicated utility rooms.

The second floor boasts a bright and functional layout, including a spacious open work area, glass-walled breakout room, a kitchen, large private offices, and oversized washrooms complete with showers.

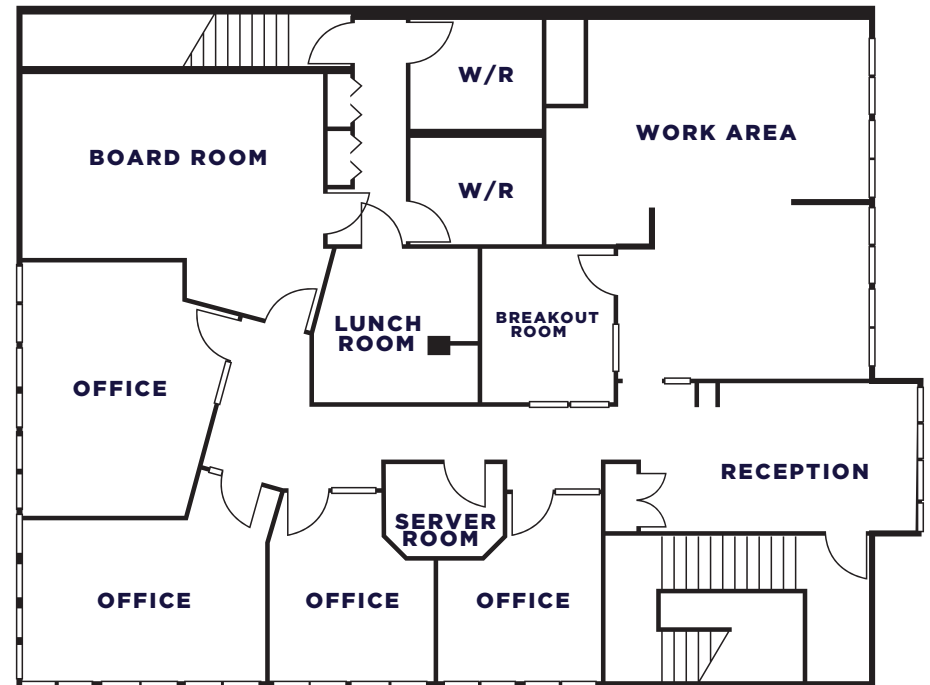
Recent upgrades include a new roof and HVAC systems, ensuring long-term comfort and operational efficiency.

FLOOR PLANS

MAIN FLOOR: 3,200 SF



SECOND FLOOR: 3,200 SF



AERIAL VIEW

