

FOR LEASE

829 S CLAREMONT

829 S Claremont St / San Mateo, CA



±5,400 SF

WAREHOUSE/OFFICE SPACE



Just Steps Away from
the Heart of Downtown
San Mateo

PROPERTY HIGHLIGHTS



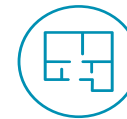
Warehouse/Office Space with
Built-In Storage Mezzanine Available



±5,400 SF
SPACE AVAILABLE



ONE (1)
ROLL UP DOOR



CLEAR SPAN
WAREHOUSE



TWO (2)
PRIVATE OFFICES



TWO (2)
RESTROOMS



ONE (1)
STORAGE CLOSET



\$1.95 PSF
INDUSTRIAL GROSS



AVAILABLE
IMMEDIATELY

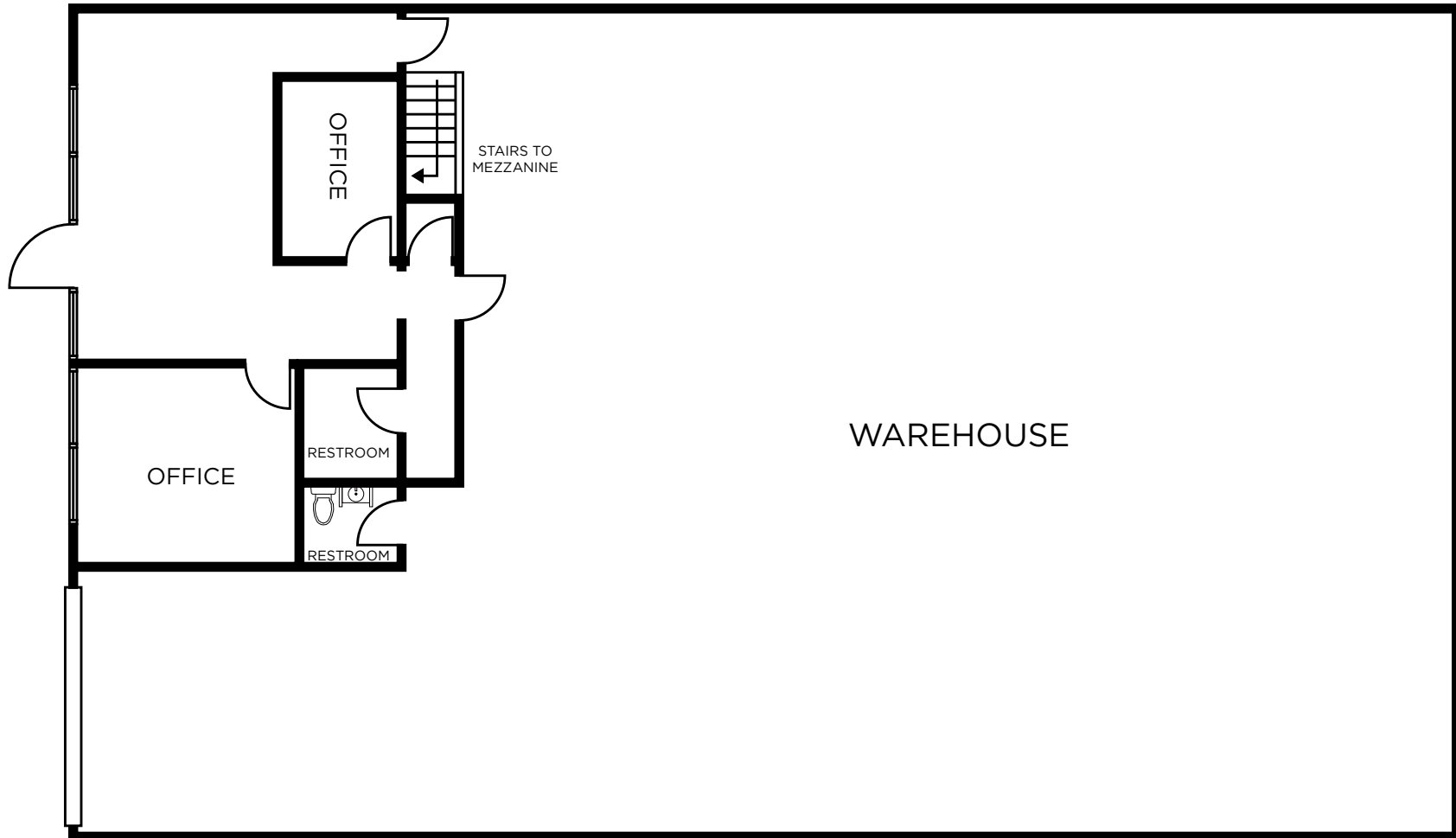


LIGHT INDUSTRIAL
UNIT

PROPERTY FLOOR PLAN



LAUNCH VIRTUAL TOUR



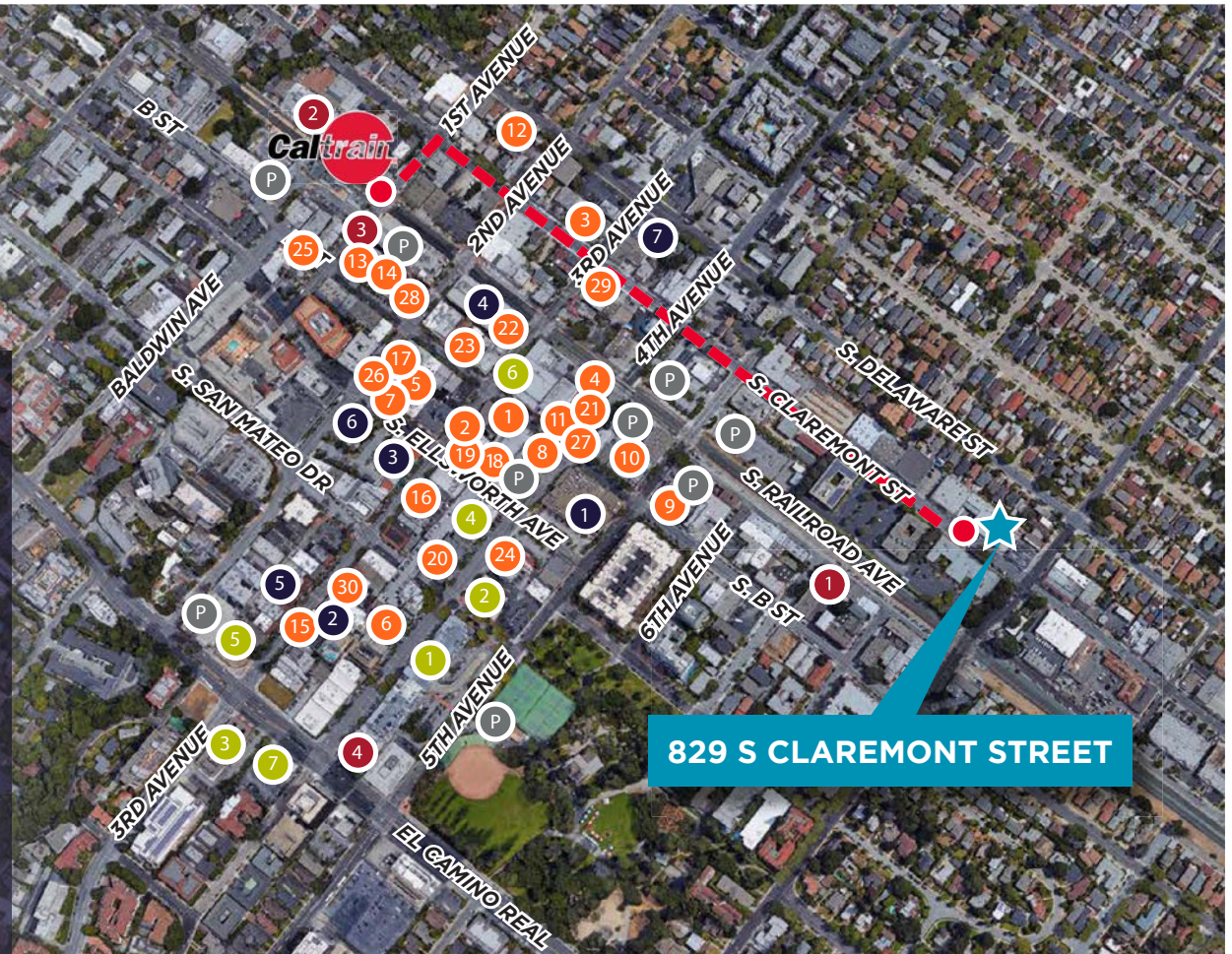
NOT TO SCALE

PROPERTY PHOTOGRAPHY



AMENITIES MAP

- 150+ Food and Beverage Establishments
- Caltrain Station (3 Minutes)
- Fitness Centers (Equinox, Orangetheory)
- Century 12 Movie Theater
- Multiple Public Parking Garages
- Draeger's Supermarket
- Central Park
- Walk Score - 96 - "Walker's Paradise"



829 S CLAREMONT STREET

RESTAURANTS

- | | |
|--------------------------|---------------------------------|
| 1 B Street & Vine | 15 Backhaus |
| 2 Sushi Sam's Edomata | 16 Vespucci Ristorante Italiano |
| 3 Takahashi Market | 17 Izakaya Mai |
| 4 Sushi Yoshizumi | 18 M Sandwiches |
| 5 Himawari | 19 Gyu-Kaku Japanese BBQ |
| 6 Taishoken | 20 Gao Viet Kitchen & Bar |
| 7 Happy Lamb Hot Pot | 21 Izakaya Ginji |
| 8 Pausa Bar & Cookery | 22 C Food Crush |
| 9 The Ravioli House | 23 Pacific Catch |
| 10 Pokeatery | 24 Hummus Mediterranean Kitchen |
| 11 Pancho Villa Taqueria | 25 Joy Sushi |
| 12 Yakitori Kokko | 26 DASH Japanese Tapas & Sushi |
| 13 Philz Coffee | |
| 14 Curry Up Now | |

SERVICES

- Draeger's Market
- Draper Universtiy
- Walgreen's
- Century 12 San Mateo
- Hero City
- U.S. Post Office
- Shell

FITNESS

- OPEX KURA
- Fit SF Personal Training
- Orangetheory Fitness San Mateo
- Equinox San Mateo

BANKS

- Chase Bank
- Wells Fargo Bank
- Bank of America
- Bank of the West
- Citibank
- Union Bank
- U.S. Bank

PARKING

- | | |
|-----------------------|-------------------------|
| P 2ND & ECR Garage | P 4th/B Lot |
| P Main St Garage | P Transit Center Garage |
| P Tennis Court Garage | P 5th/Claremont Lot |
| P Central Garage | P 4th/Claremont Lot |
| P 5th/B Lot | |



Marc Pope
Vice Chairman
+1 650 619 2981
marc.pope@cushwake.com

Gary Boitano
Managing Director
+1 650 401 2122
gary.boitano@cushwake.com