



CUSHMAN &
WAKEFIELD

AVAILABLE FOR LEASE

11651-11653 CENTRAL PKWY

JACKSONVILLE, FL 32224



Flex / Warehouse
2,080 - 6,908 SF



Property Highlights

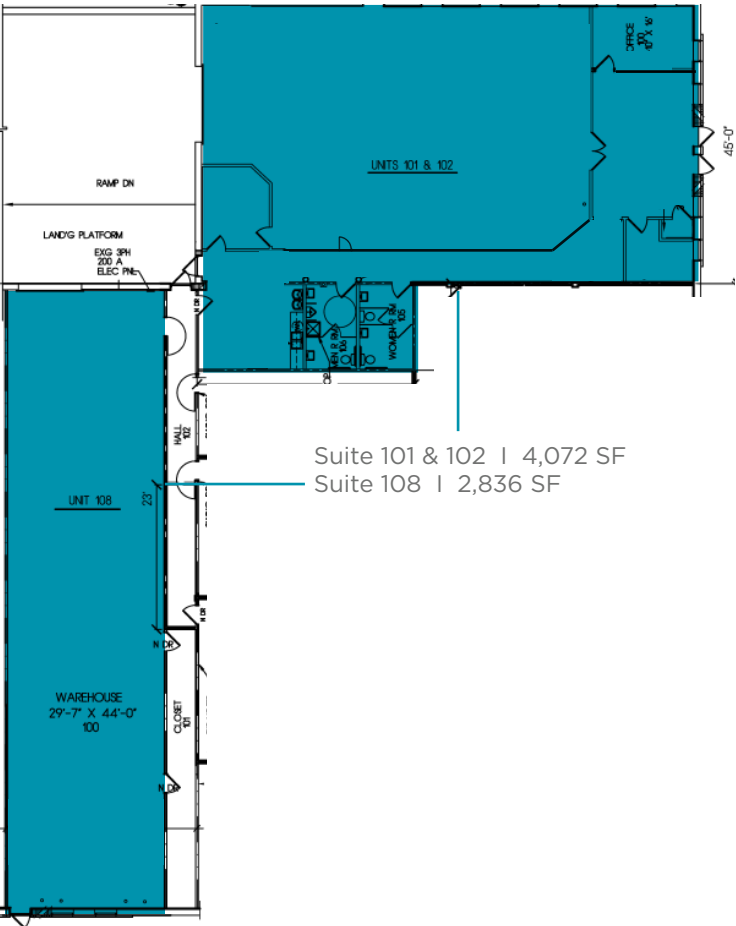
- Located in EastPark at Town Center Business Park
- Availabilities in two adjacent buildings
- Multiple space configurations
- Situated just north of the University of North Florida, and across from Florida State College at Jacksonville
- IBP Zoning
- Close to many amenities such as the St. Johns Town Center
- Easy access via intersection of Beach Boulevard and I-295
- Dock high and grade loading
- Great Southside Flex Space
- 18' Clear Height

Available
 Leased



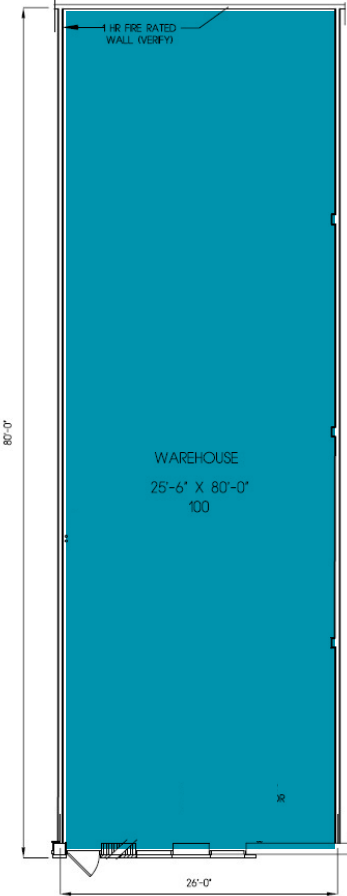
Floor Plans

Suite 101, 102 & 108
6,908 SF

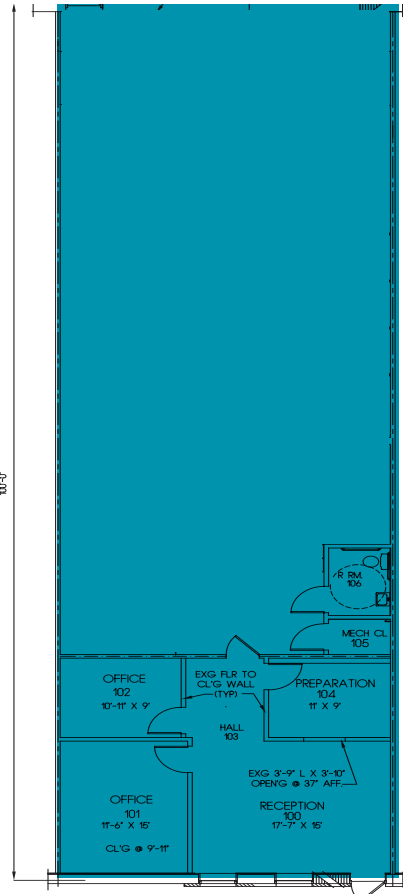


Suite 101 & 102 | 4,072 SF
Suite 108 | 2,836 SF

SUITE 105
2,080 SF



SUITE 111
3,000 SF



	Suite 101, 102 & 108	Suite 105	Suite 111
TOTAL SF:	±6,908 SF	±2,080 (HVAC WAREHOUSE)	±3,000
OFFICE:	±1,600 SF	N/A	±720 SF
DOORS:	2 RAMP	N/A	1 DOCK (10' X 10')

CONTACT

KENDALL WILSON
Industrial Specialist
kendall.wilson@cushwake.com
+1 904 380 8341

CUSHMAN & WAKEFIELD OF FLORIDA, LLC
121 West Forsyth Street, Suite 900
Jacksonville, FL 32202
+1 904 731 9500
cushmanwakefield.com



©2026 Cushman & Wakefield. All rights reserved. The information contained in this communication is strictly confidential. This information has been obtained from sources believed to be reliable but has not been verified. NO WARRANTY OR REPRESENTATION, EXPRESS OR IMPLIED, IS MADE AS TO THE CONDITION OF THE PROPERTY (OR PROPERTIES) REFERENCED HEREIN OR AS TO THE ACCURACY OR COMPLETENESS OF THE INFORMATION CONTAINED HEREIN, AND SAME IS SUBMITTED SUBJECT TO ERRORS, OMISSIONS, CHANGE OF PRICE, RENTAL OR OTHER CONDITIONS, WITHDRAWAL WITHOUT NOTICE, AND TO ANY SPECIAL LISTING CONDITIONS IMPOSED BY THE PROPERTY OWNER(S). ANY PROJECTIONS, OPINIONS OR ESTIMATES ARE SUBJECT TO UNCERTAINTY AND DO NOT SIGNIFY CURRENT OR FUTURE PROPERTY PERFORMANCE.

