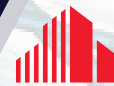


**FOR LEASE**  
**758 WEST 1500 NORTH**  
**SALT LAKE CITY, UT**



**CUSHMAN &  
WAKEFIELD**

[cushmanwakefield.com](http://cushmanwakefield.com)



**OFFICE/WAREHOUSE & YARD SPACE**  
**15,218 SF ON 2.34 AC**

**PHILLIP EILERS**

Senior Director  
+1 801 303 5426  
[phillip.eilers@cushwake.com](mailto:phillip.eilers@cushwake.com)

**JON SCHRECK**

Director  
+1 801 303 5531  
[jon.schreck@cushwake.com](mailto:jon.schreck@cushwake.com)



**CUSHMAN &  
WAKEFIELD**



FOR LEASE

# 758 WEST 1500 NORTH

Salt Lake City, UT



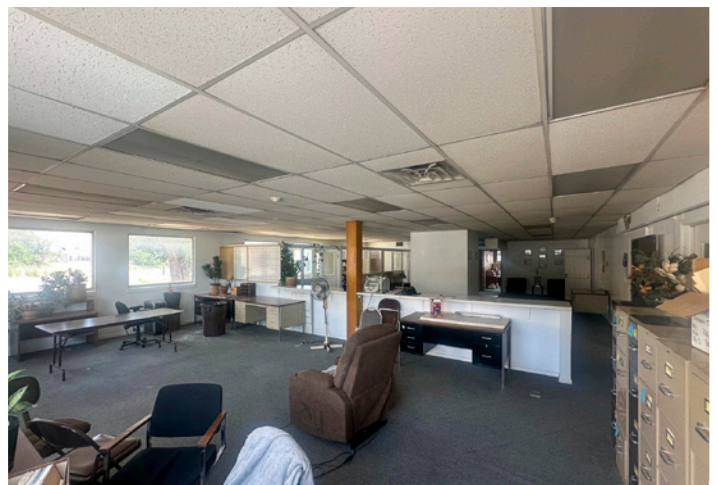
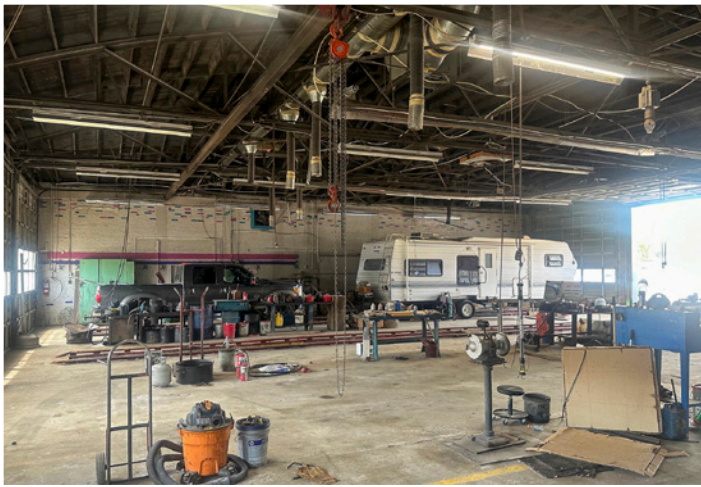
## PROPERTY OVERVIEW

**WAREHOUSE:** 12,239 SQ.FT.  
**OFFICE:** 2,979 SQ.FT. (STACKED)  
**TOTAL:** 15,218 SQ.FT.  
**LOT SIZE:** 2.34 FENCED ACRES

- 2.34 acres of fenced, asphalt & gravel yard
- 14' Clear Height
- Zoned M-2
- 2 Service Pits

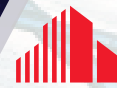
- 10 Ground Level Doors
  - (8) 14'x14' Ground Level Doors
  - (2) 12'x10' Ground Level Doors
- Built in 1947
- 480 Volt, 3-Phase Power
- Masonry & Metal Construction
- 0.91/1,000 SF (12 Stalls)







# FOR LEASE 758 WEST 1500 NORTH SALT LAKE CITY, UT



**CUSHMAN &  
WAKEFIELD**

[cushmanwakefield.com](https://cushmanwakefield.com)



## CONTACT INFORMATION

### PHILLIP EILERS

Senior Director  
+1 801 303 5426  
[phillip.eilers@cushwake.com](mailto:phillip.eilers@cushwake.com)

### JON SCHRECK

Director  
+1 801 303 5531  
[jon.schreck@cushwake.com](mailto:jon.schreck@cushwake.com)

170 South Main Street, Suite 1600  
Salt Lake City, UT 84101  
+1 801 322 2000  
[cushmanwakefield.com](https://cushmanwakefield.com)