

MASTER LEASE EXPIRES 8/31/2028



FOR SUBLEASE

SUITE A | 3,610 SF

5106 PORT CHICAGO HWY, CONCORD

KRIS HAGAR, SIOR
Senior Director
925 382 8887
kris.hagar@cushwake.com
LIC. #02009499



PROPERTY HIGHLIGHTS



±3,610
Total SF



±20%
Office



One (1)
Grade Level Door



±16' Warehouse
Clearance



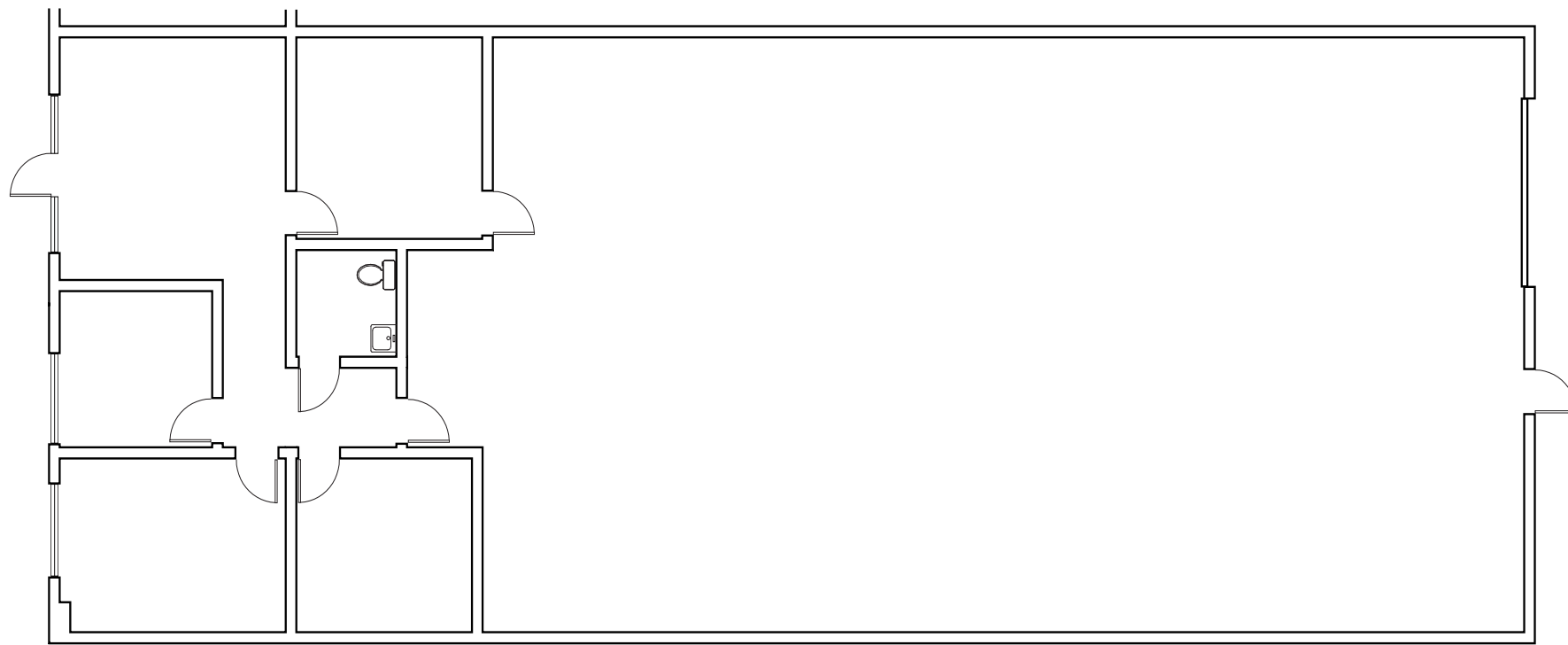
200 Amps
120/208V, 3-Phase Power



Concrete Tilt-Up
Constuction



Fully
Sprinklered



Kris Hagar, SIOR | 925 382 8887 | kris.hagar@cushwake.com | LIC. #02009499

1333 N California Blvd, Suite 500, Walnut Creek, CA 94596

©2025 Cushman & Wakefield. All rights reserved. The information contained in this communication is strictly confidential. This information has been obtained from sources believed to be reliable but has not been verified. NO WARRANTY OR REPRESENTATION, EXPRESS OR IMPLIED, IS MADE AS TO THE CONDITION OF THE PROPERTY (OR PROPERTIES) REFERENCED HEREIN OR AS TO THE ACCURACY OR COMPLETENESS OF THE INFORMATION CONTAINED HEREIN, AND SAME IS SUBMITTED SUBJECT TO ERRORS, OMISSIONS, CHANGE OF PRICE, RENTAL OR OTHER CONDITIONS, WITHDRAWAL WITHOUT NOTICE, AND TO ANY SPECIAL LISTING CONDITIONS IMPOSED BY THE PROPERTY OWNER(S). ANY PROJECTIONS, OPINIONS OR ESTIMATES ARE SUBJECT TO UNCERTAINTY AND DO NOT SIGNIFY CURRENT OR FUTURE PROPERTY PERFORMANCE.