

For Lease



Crosspoint VIII
7998 Centerpoint Dr., Suite 800
Indianapolis, IN 46256

±25,695 Square Feet Available

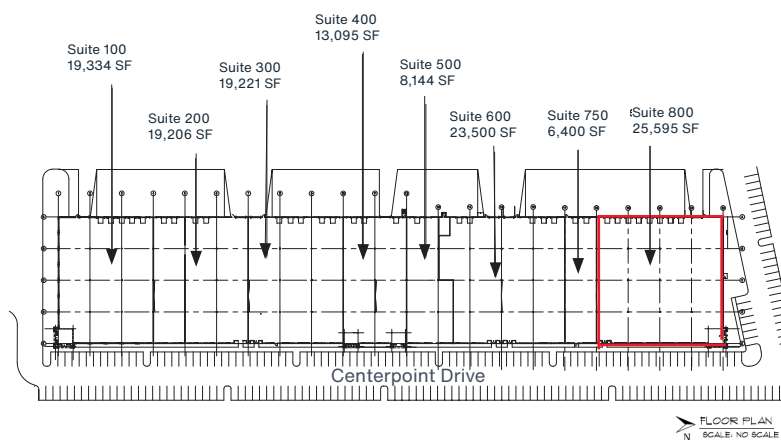
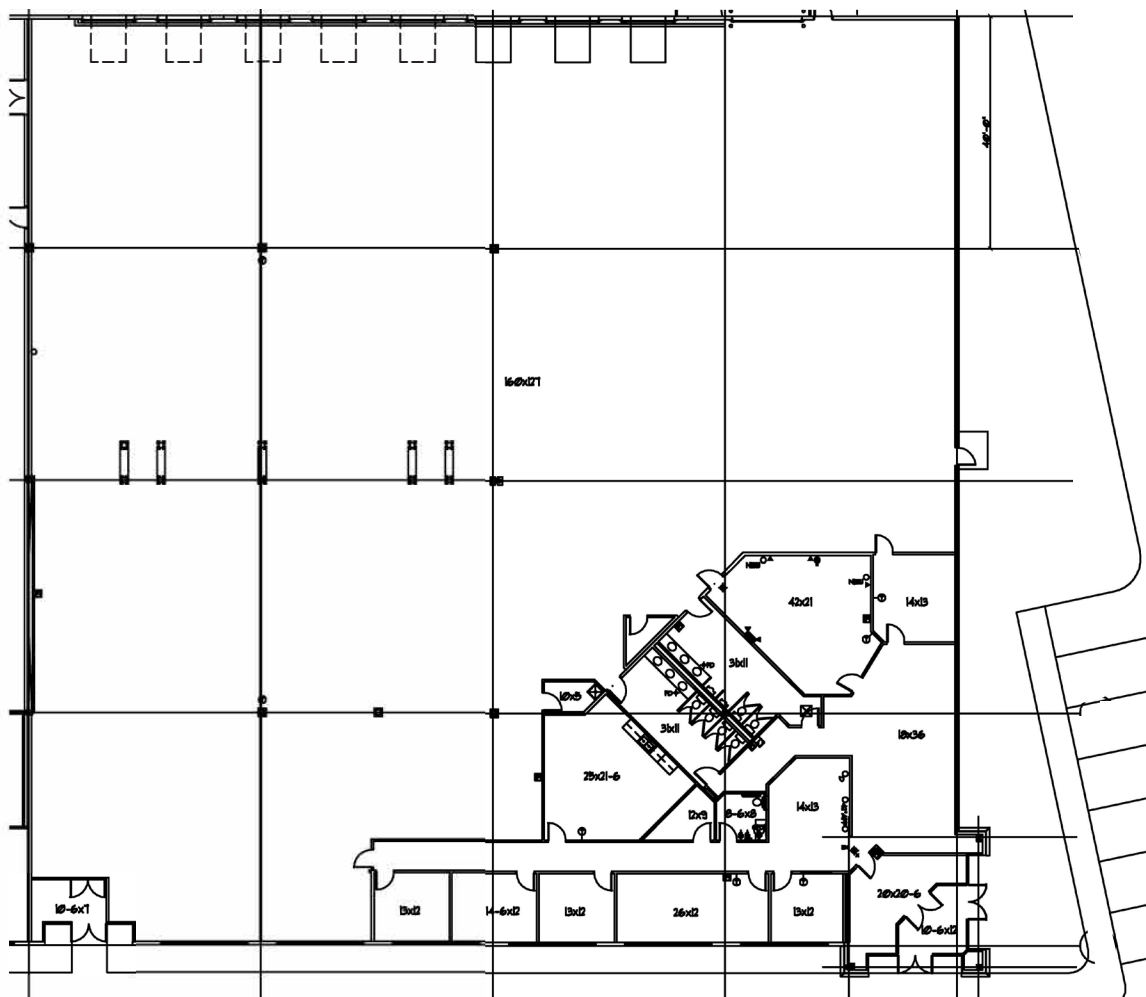


OFFICE/WAREHOUSE SPACE

- Total Available SF: ±25,695 SF
- Office SF: ±5,013 SF
- Ceiling Height: 27.5'
- Docks: 8
- Drive-in Door: 1
- ESFR Sprinkler
- Convenient access to I-69 and I-465
- Lease Rate: TBD
- 2025 OPEX: \$2.82/SF
- Available: April 2026



Crosspoint VIII



www.clarionpartners.com

For more information on this opportunity, please contact.



Bryan W. Poynter, SIOR, CCIM
+1 317 670 4171
bryan.poynter@cushwake.com

Fritz A. Kauffman, SIOR
+1 317 753 4444
fritz.kauffman@cushwake.com

Crosspoint VIII is a well-located industrial building with a diverse tenant mix in the heart of the fastest growing community in Indiana.