

FOR LEASE

9900 18th St N

St. Petersburg, FL 33716



For more information please contact:

JOHN JACKSON, SIOR, CCM

Executive Director

+1 727 643 7316

john.jackson@cushwake.com

JT FAIRCLOTH, SIOR

Director

+1 813 833 3242

jt.faircloth@cushwake.com

CASEY PERRY

Senior Associate

+1 813 233 6564

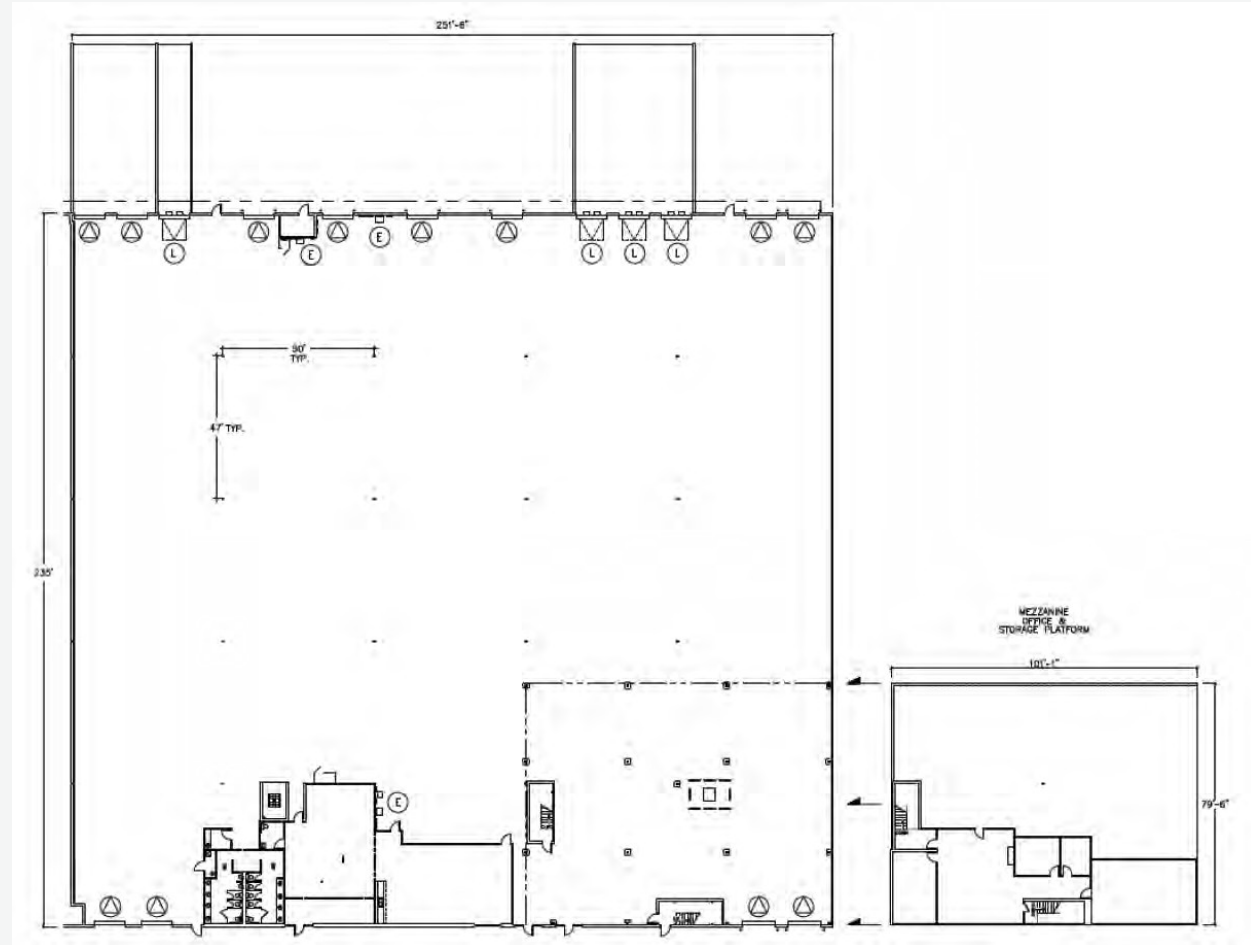
casey.g.perry@cushwake.com



GID
INDUSTRIAL

PROPERTY FEATURES + FLOOR PLAN

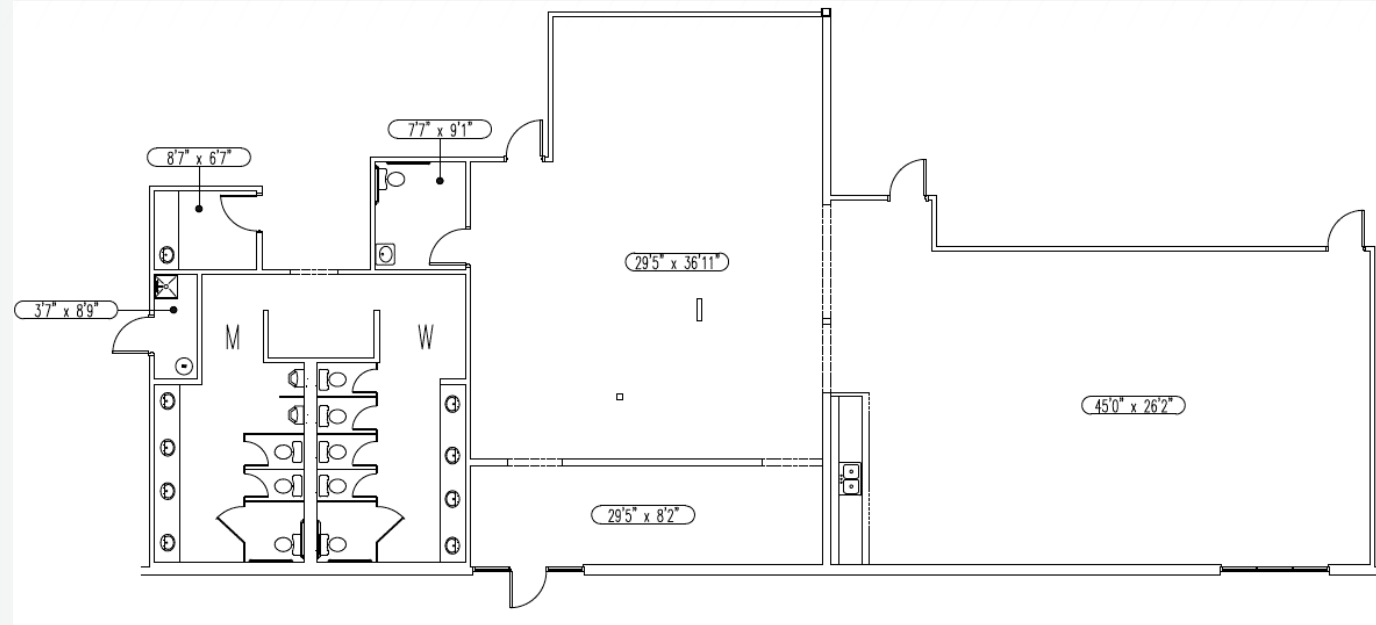
- 59,060 SF
- 3,364 SF First Floor Office
- 2,477 SF Second Floor Office
- 5,078 SF Mezz Storage Space (not included in RSF)
- Clear Height: 27'
- 6 Dock Door Fans
- 12 (10' x 13') Drive-In Doors
- Parking Ratio: 2.27/1000
- 130' Truck Court Depth
- ESFR Sprinkler System
- 4 (10' x 10') Grade Level Doors
- 100% Air Conditioned Warehouse
- Construction Type: Tilt-Up Concrete
- Power: 3 Phase, 1200 AMP, 277/480 V
- 4 (10' x 10') Truck Wells W/ Pit Levelers and Seals
- 4 Front Drive-In Doors Convertible to Storefront Glass



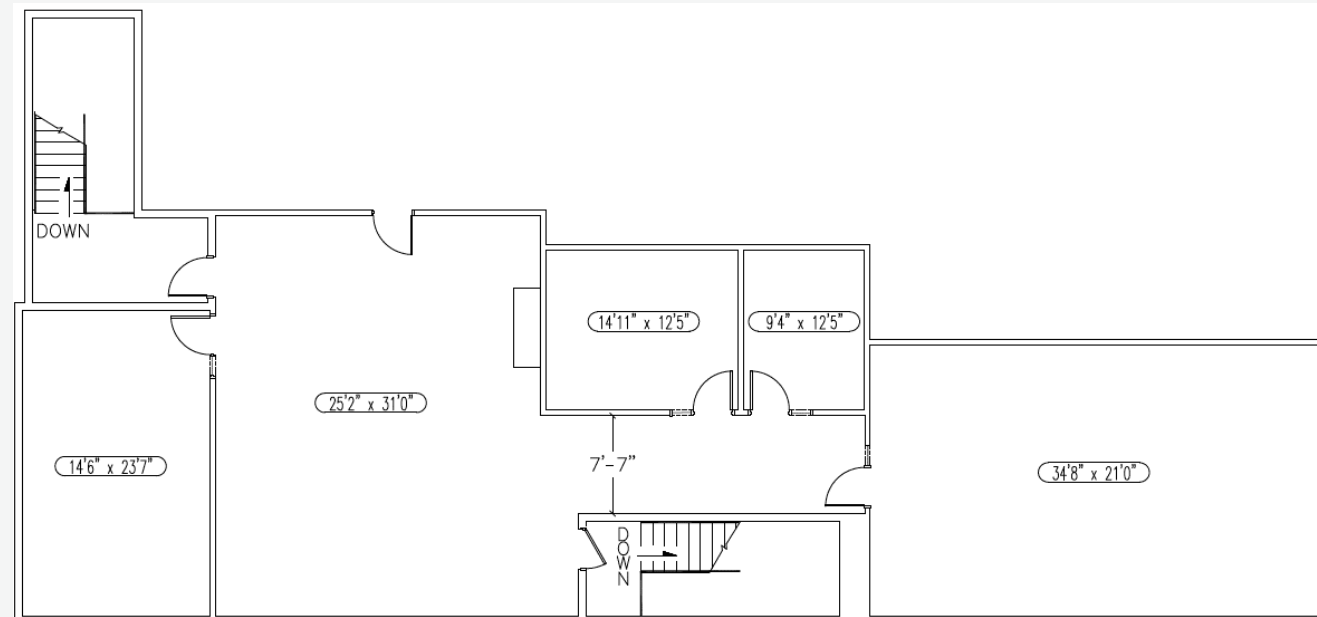
AVAILABLE NOW

MEZZ/UPSTAIRS OFFICE +DOWNSTAIRS OFFICE

Downstairs Office



Upstairs/Mezz Office

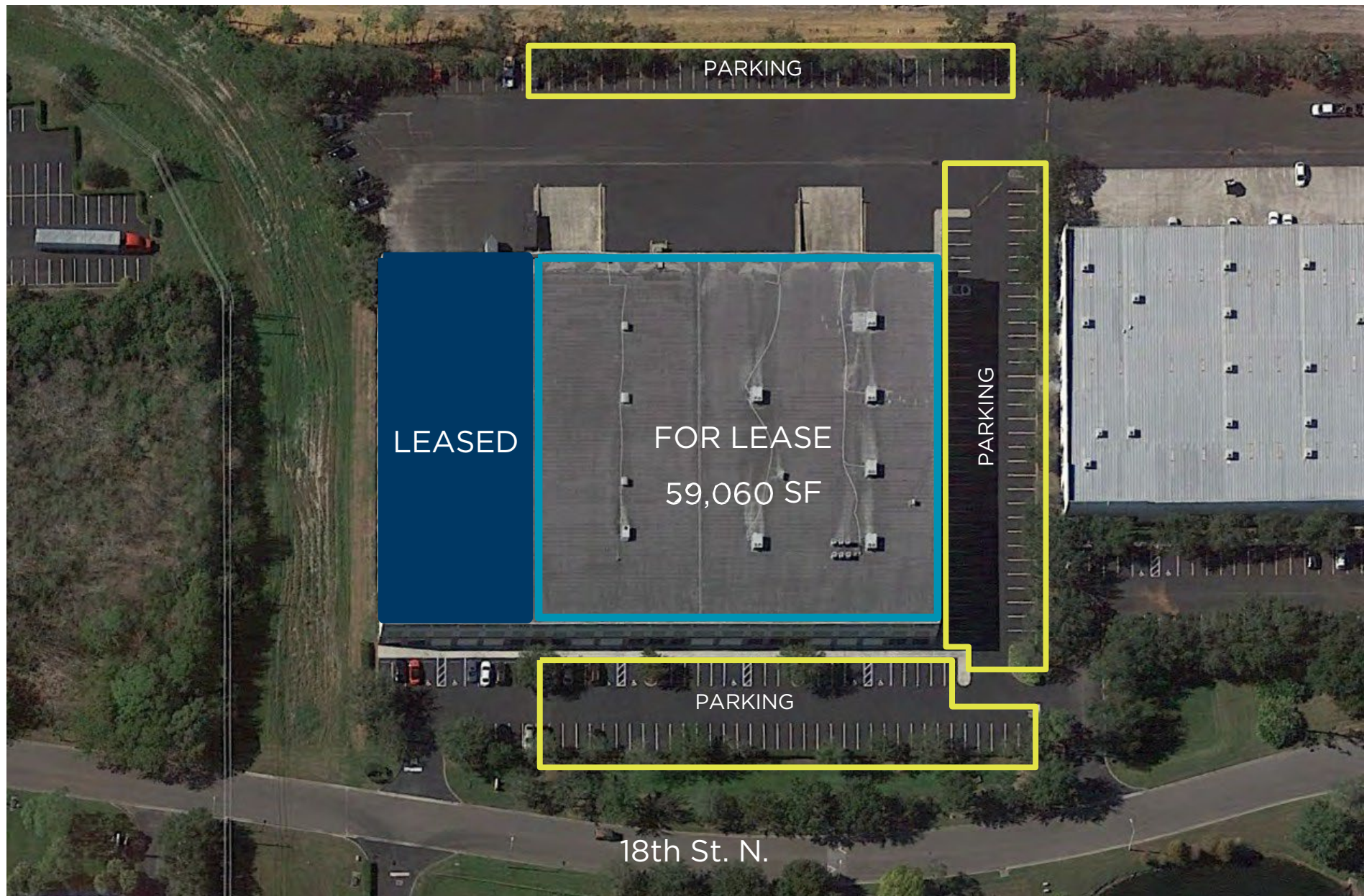


AVAILABLE NOW

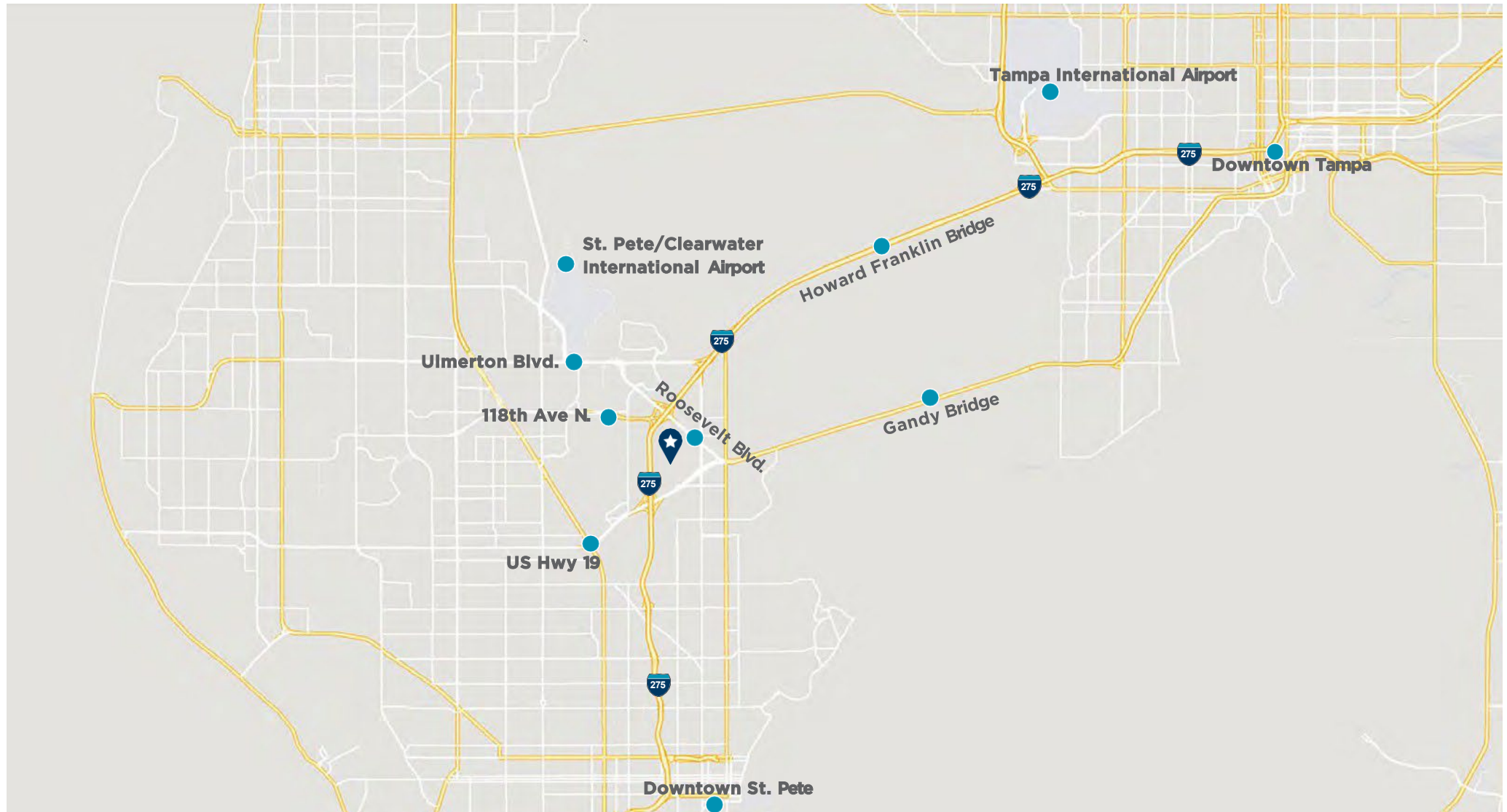
PROPERTY PHOTOS



SITE PLAN



AERIAL MAP



CONTACT

JOHN JACKSON, SIOR, CCIM

Executive Director

+1 727 643 7316

john.jackson@cushwake.com

JT FAIRCLOTH, SIOR

Director

+1 813 833 3242

jt.faircloth@cushwake.com

CASEY PERRY

Senior Associate

+1 813 233 6564

casey.g.perry@cushwake.com

201 N. Franklin St., Suite 3300

Tampa, FL 33602

+1 813 223 6300

cushmanwakefield.com

©2025 Cushman & Wakefield. All rights reserved. The material in this presentation has been prepared solely for information purposes, and is strictly confidential. Any disclosure, use, copying or circulation of this presentation (or the information contained within it) is strictly prohibited, unless you have obtained Cushman & Wakefield's prior written consent. The views expressed in this presentation are the views of the author and do not necessarily reflect the views of Cushman & Wakefield. Neither this presentation nor any part of it shall form the basis of, or be relied upon in connection with any offer, or act as an inducement to enter into any contract or commitment whatsoever. NO REPRESENTATION OR WARRANTY IS GIVEN, EXPRESS OR IMPLIED, AS TO THE ACCURACY OF THE INFORMATION CONTAINED WITHIN THIS PRESENTATION, AND CUSHMAN & WAKEFIELD IS UNDER NO OBLIGATION TO SUBSEQUENTLY CORRECT IT IN THE EVENT OF ERRORS.

