

**AVAILABLE FOR LEASE**

**±5,625 SF BUILDING ON ±1.35 AC**

**2447**  
**STAGECOACH ROAD**

**STOCKTON, CALIFORNIA**

**STEVE DUNN**

Senior Director  
+1 209 992 0953  
steve.dunn@cushwake.com  
Lic #01410812

**BLAKE RASMUSSEN**

Executive Managing Director  
+1 209 481 7044  
blake.rasmussen@cushwake.com  
Lic #01020250



# PROPERTY HIGHLIGHTS

- ±5,625 SF warehouse building
- ±1.35-Acre parcel
- Fenced and paved yard
- ±1,575 SF office space with reception, bullpen, three (3) private offices, and two (2) restrooms
- Four (4) 14' x 14' grade-level doors; (2) drive-thru bays; clear span
- 400 Amp, 120/208V, 3-phase power
- ±17-19' clear height
- IG (Industrial - General, City of Stockton)
- Additional Features:
  - Insulated shop
  - 10HP compressor w/distributed airlines
  - 3-stage wash and secondary containment system
  - Covered, outdoor wash station
  - Skylights
  - Excellent access to CA Highway 99

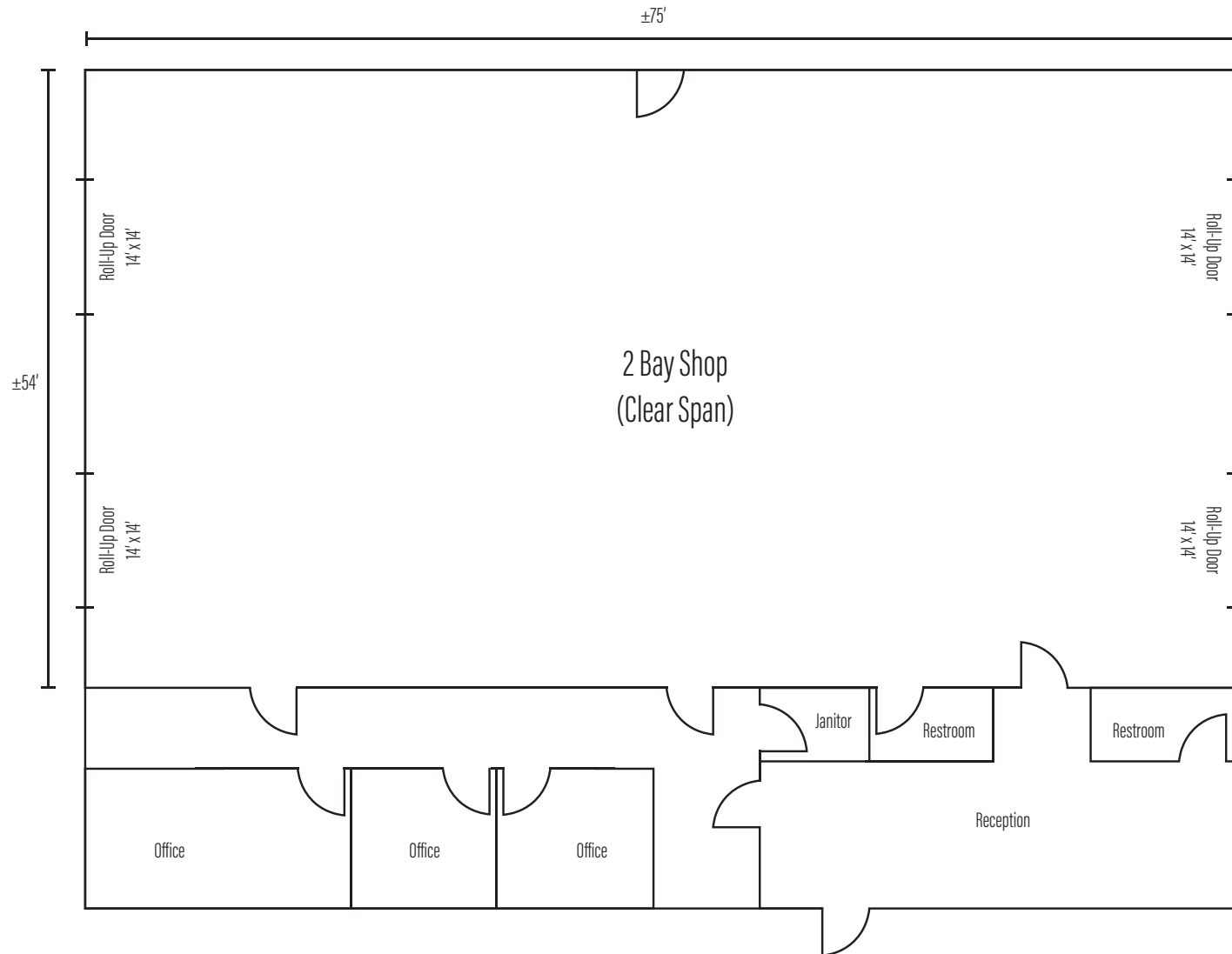




# PROPERTY IMAGES



# FLOOR PLAN





# SURROUNDING TENANTS







## CONTACT

### STEVE DUNN

Senior Director  
+1 209 992 0953  
[steve.dunn@cushwake.com](mailto:steve.dunn@cushwake.com)  
Lic #01410812

### BLAKE RASMUSSEN

Executive Managing Director  
+1 209 481 7044  
[blake.rasmussen@cushwake.com](mailto:blake.rasmussen@cushwake.com)  
Lic #01020250