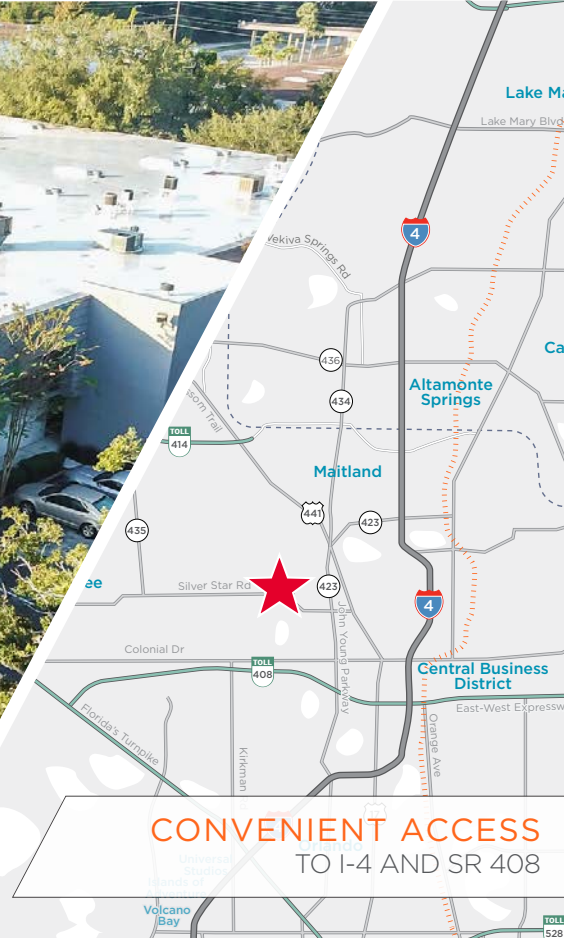


## SILVER STAR COMMERCE CENTER III

3702 SILVER STAR ROAD, ORLANDO, FL 32808



CONVENIENT ACCESS  
TO I-4 AND SR 408

10,800 SF AVAILABLE  
FOR SUBLEASE

# SPACE HIGHLIGHTS

### ASKING RATE

\$12.50/SF NNN

### OPEX\*

\$3.68/PSF

### MONTHLY RATE\*\*

\$14,926.05

### WAREHOUSE SF

9,125 SF

### OFFICE SF

1,675 SF

### ZONING

I-P/W

### CLEAR HEIGHT

18'-19'

### YEAR BUILT

1980

### AVAILABILITY

IMMEDIATELY

### LOADING DOORS

(4) DOCK DOORS

### ELECTRICAL SPECS

3-PHASE

**\*\*Sales Tax Included**  
**\*Denotes Estimated Operating Expenses for 2024**

## CONTACT INFORMATION

### TAYLOR ZAMBITO

Senior Director

+1 407 541 4409

taylor.zambito@cushwake.com

### RYAN HUBBARD

Director

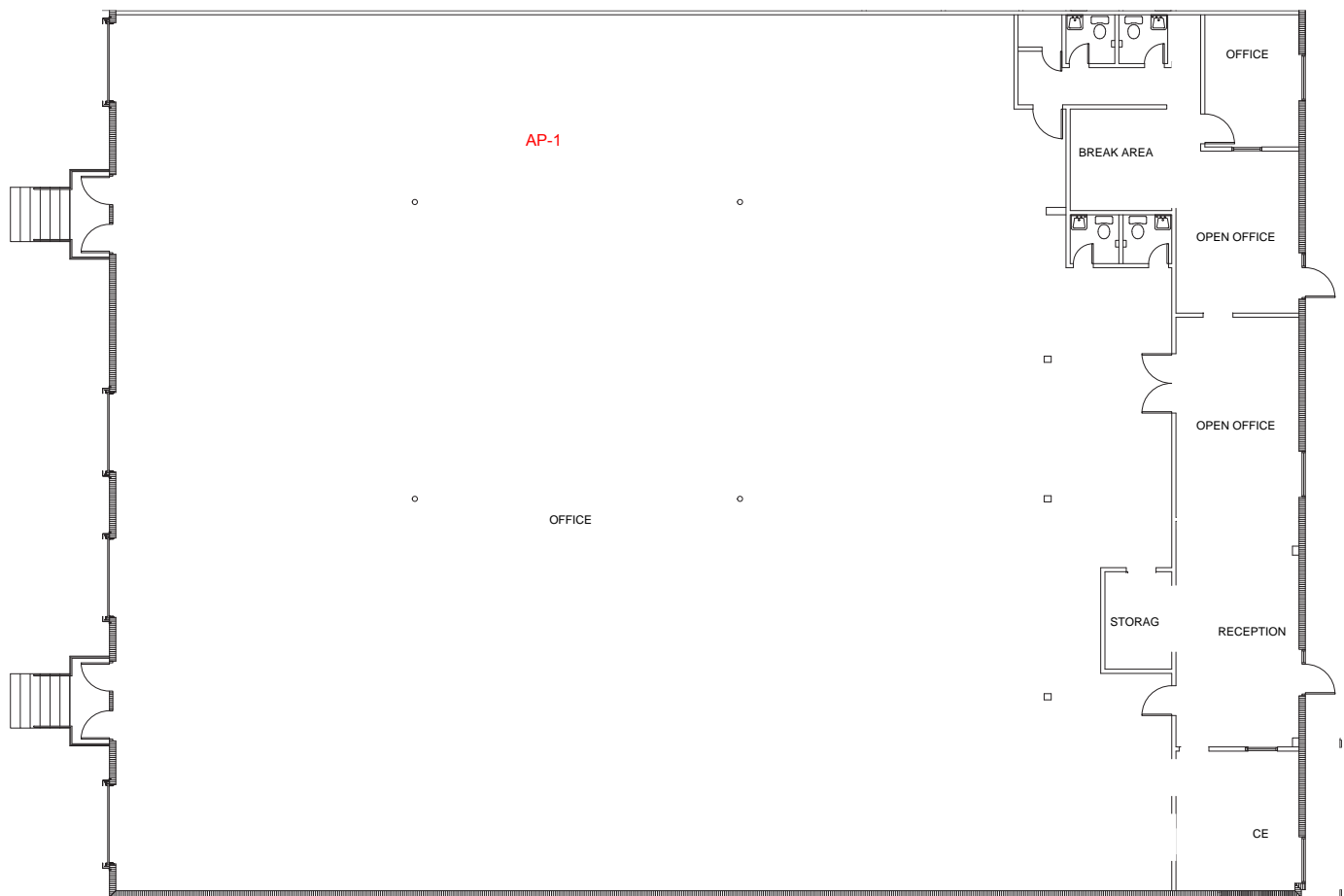
+1 407 541 4390

ryan.hubbard@cushwake.com



©2024 Cushman & Wakefield. All rights reserved. The information contained in this communication is strictly confidential. This information has been obtained from sources believed to be reliable but has not been verified. No warranty or representation, express or implied, is made as to the condition of the property (or properties) referenced herein or as to the accuracy or completeness of the information contained herein, and same is submitted subject to errors, omissions, change of price, rental or other conditions, withdrawal without notice, and to any special listing conditions imposed by the property owner(s). Any projections, opinions or estimates are subject to uncertainty and do not signify current or future property performance.

3702 SILVER STAR ROAD  
10,800 SF



## CONTACT INFORMATION

### TAYLOR ZAMBITO

Senior Director  
+1 407 541 4409

taylor.zambito@cushwake.com

### RYAN HUBBARD

Director  
+1 407 541 4390

ryan.hubbard@cushwake.com



©2024 Cushman & Wakefield. All rights reserved. The information contained in this communication is strictly confidential. This information has been obtained from sources believed to be reliable but has not been verified. No warranty or representation, express or implied, is made as to the condition of the property (or properties) referenced herein or as to the accuracy or completeness of the information contained herein, and same is submitted subject to errors, omissions, change of price, rental or other conditions, withdrawal without notice, and to any special listing conditions imposed by the property owner(s). Any projections, opinions or estimates are subject to uncertainty and do not signify current or future property performance.