

C R E V E C O E U R

CITY PLACE

THREE

23,357 RSF

Full Floor
Available
for Sublease

3 Cityplace Drive, Creve Coeur, MO 63141

 CUSHMAN &
WAKEFIELD

*CityPlace Café*

Where Productivity Meets Possibility

Step into a fully built, move-in ready opportunity designed to meet the demands of today's leading businesses. With 23,357 RSF and access to premier on-site amenities, 3 City Place delivers both function and flexibility.

Premier Class A Office Mixed Use Campus

Centrally Located at I-270 & Olive Boulevard
in Creve Coeur

Numerous Walkable Dining Options

CityPlace Full Amenity Offering:

- Conference & Training Rooms
- Fitness Center with Locker Rooms
- CityPlace Café
- On-Site Security

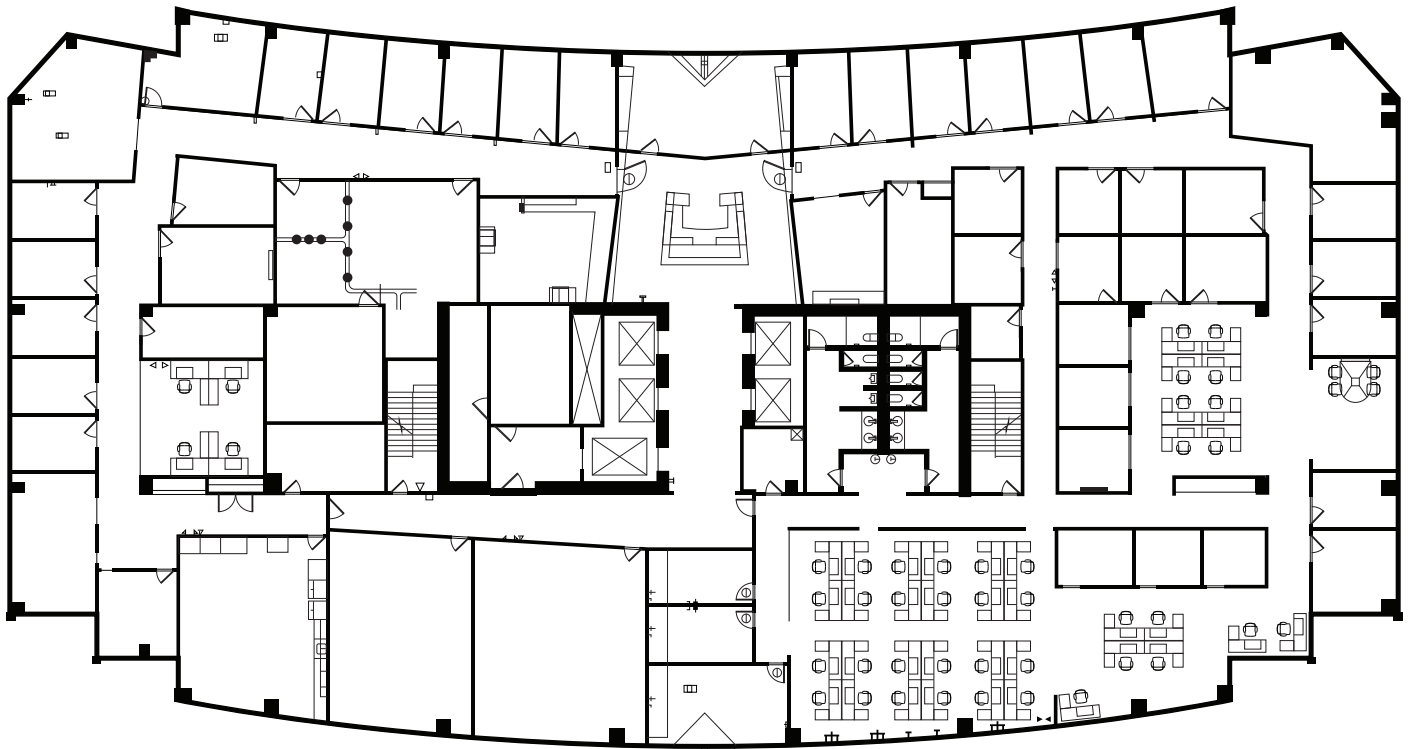
Structured Parking

Full 4th Floor Available – 23,357 RSF

Available Immediately with Sublease term thru
11/30/2030

Existing Furniture Available

4th Floor | 23,357 RSF



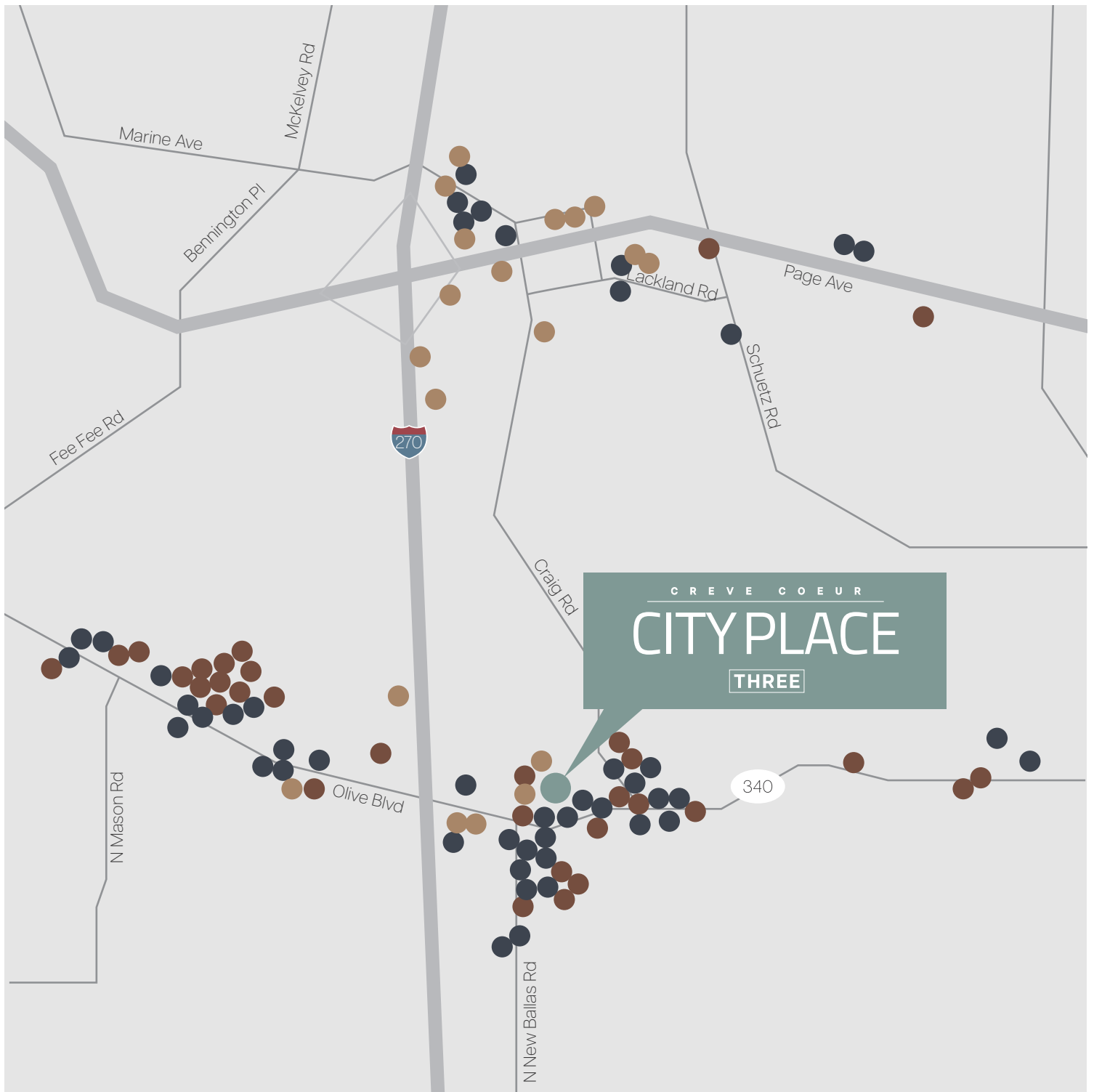


Just to Highlight a Few:

Starbucks
Five Guys
Potbelly
First Watch
Pasta House
McDonalds
Applebee's
Pei Wei
PNC Bank
US Bank
Marriott Courtyard
Drury Inn & Suites
Dierberg's
Trader Joes
FedEx
UPS

In the Company of Convenience

The area offers a diverse selection of amenities designed for convenience and accessibility, including a variety of restaurants, hotels, shopping centers, and banking services—all located within close proximity.



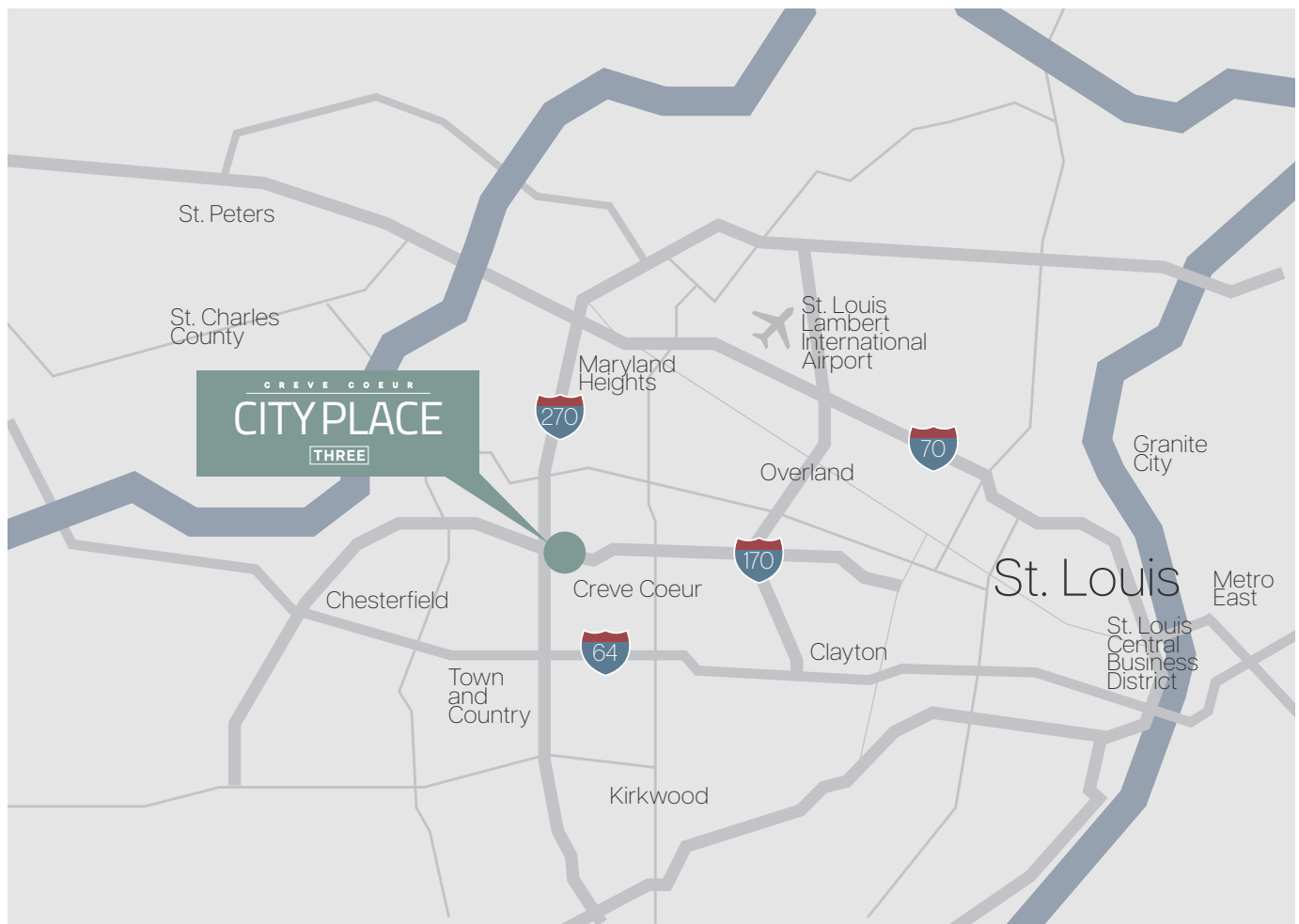
20
Hotels

47
Restaurants

32
Retail

A Central Hub for St. Louis Business

Located in the heart of Creve Coeur's thriving business corridor, 3 Cityplace Drive offers exceptional access to major highways and sits within one of St. Louis' most sought-after corporate submarkets. This highly visible address places tenants at the center of one of the region's most established and economically active office hubs—ideal for companies looking to elevate their market presence and align with leading businesses in a premier commercial setting.





CREVE COEUR
CITY PLACE
THREE

Olive Blvd



C R E V E C O E U R

CITY PLACE

THREE

For More Information, Please Contact:

SCOTT DUNWOODY

Senior Director

+1 314 925 3158

scott.dunwoody@cushwake.com

MICHAEL BURNS

Senior Associate

+1 314 392 0258

michael.burns@cushwake.com