

# RETAIL SPACE

## FOR SUBLEASE - 12,900 SF

\$20.00/SF MODIFIED GROSS



**3151 SE 14TH ST | DES MOINES, IA**

**JORDAN BOUSLOG**  
Senior Associate  
+1 515 402 9131  
[jbouslog@iowaca.com](mailto:jbouslog@iowaca.com)

**BRANDON FITZ**  
Senior Associate  
+1 319 400 0202  
[bfitz@iowaca.com](mailto:bfitz@iowaca.com)

**MARK E. TIMMINS, J.D.**  
Senior Associate  
+1 515 988 2765  
[mtimmins@iowaca.com](mailto:mtimmins@iowaca.com)

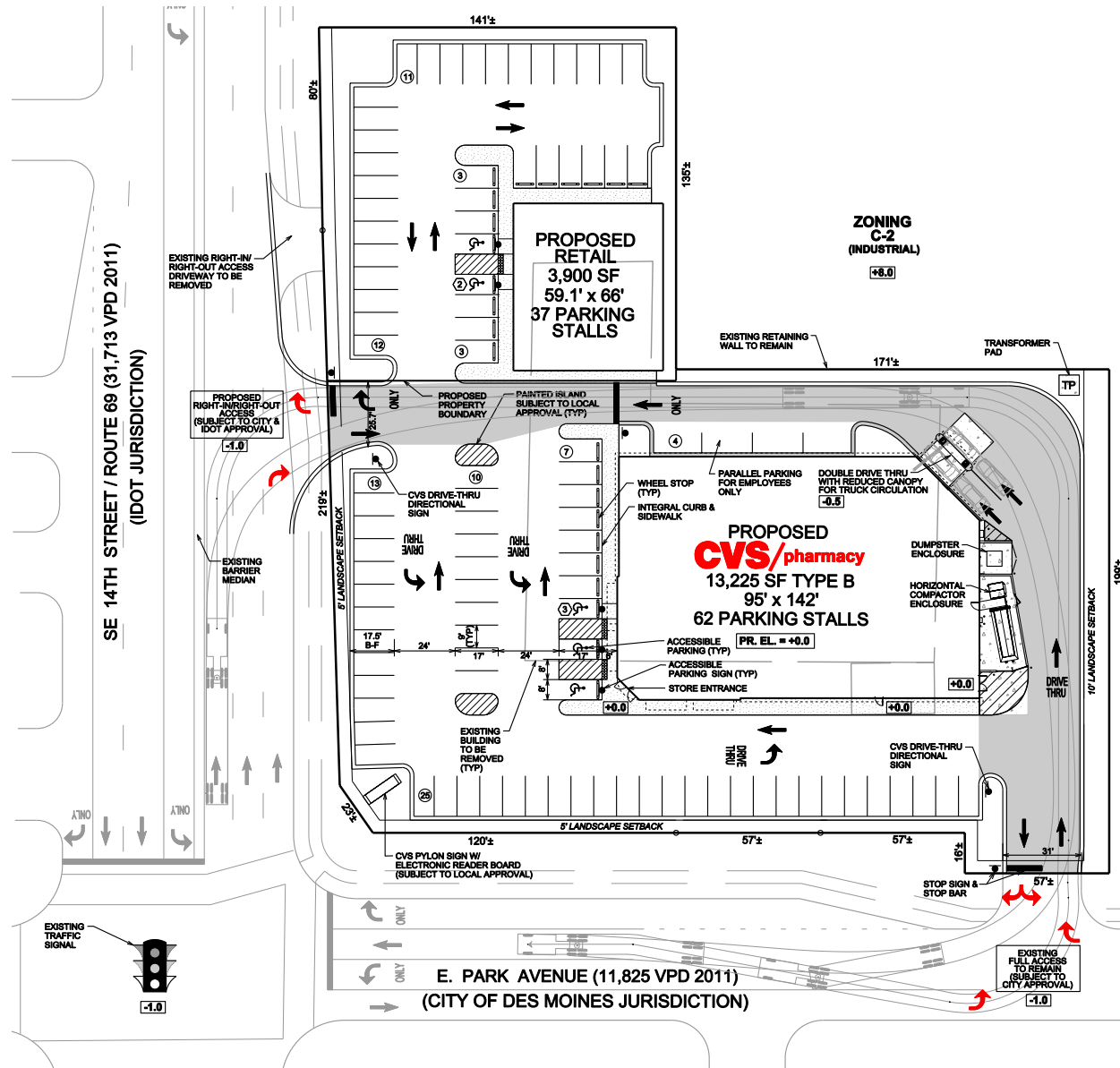
Independently Owned and Operated by Affiliates of Cushman & Wakefield, LLC



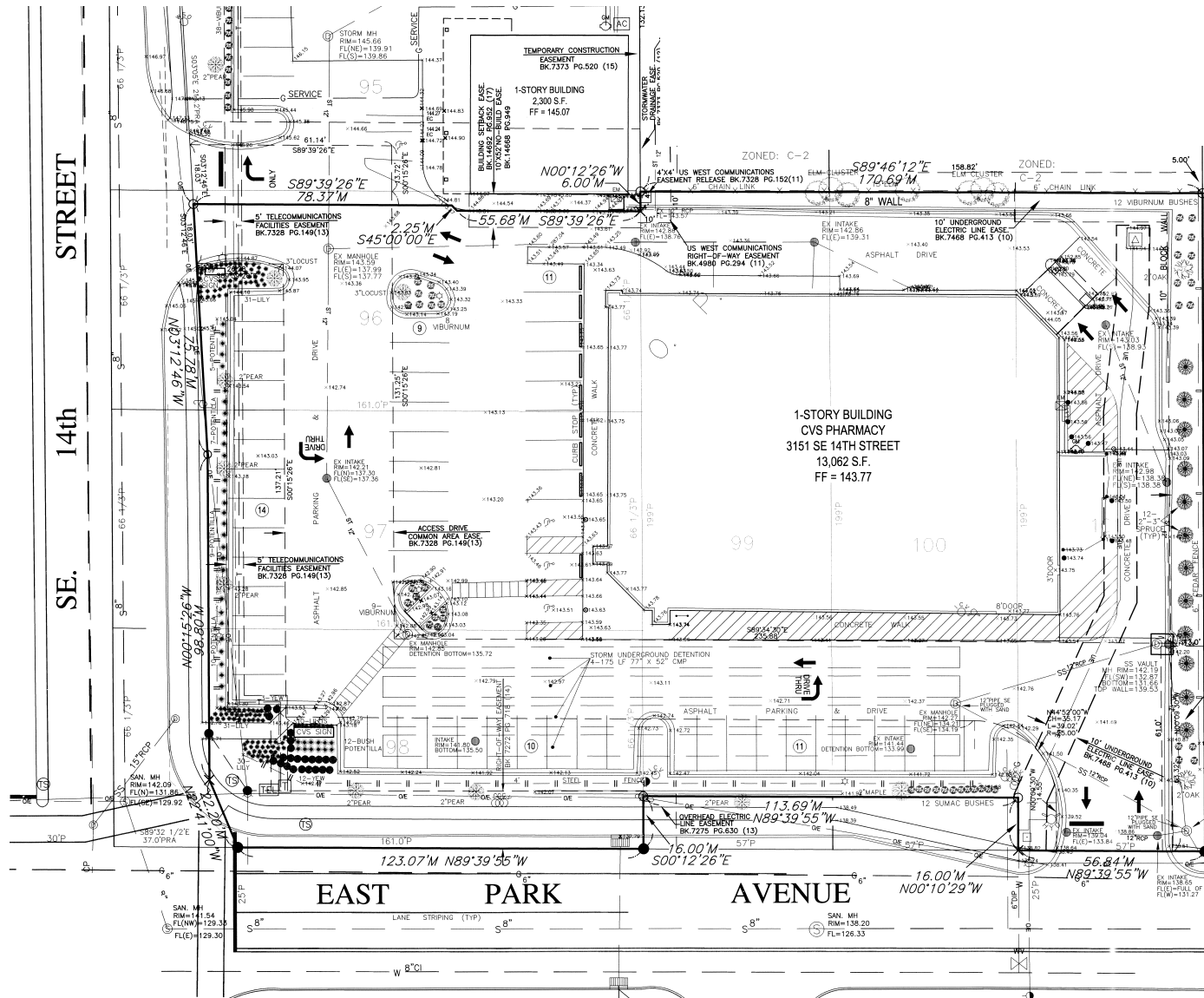
**12,900 RENTABLE SF**  
**\$20.00/SF MODIFIED GROSS**  
**SUBLEASE THROUGH 1/31/39**

- Drive-thru currently in place
- Insurance and CAM responsibility of tenant
- 2024 taxes: \$78,978 (\$6.12/SF)
- Building developed in 2013
- High visibility and accessibility





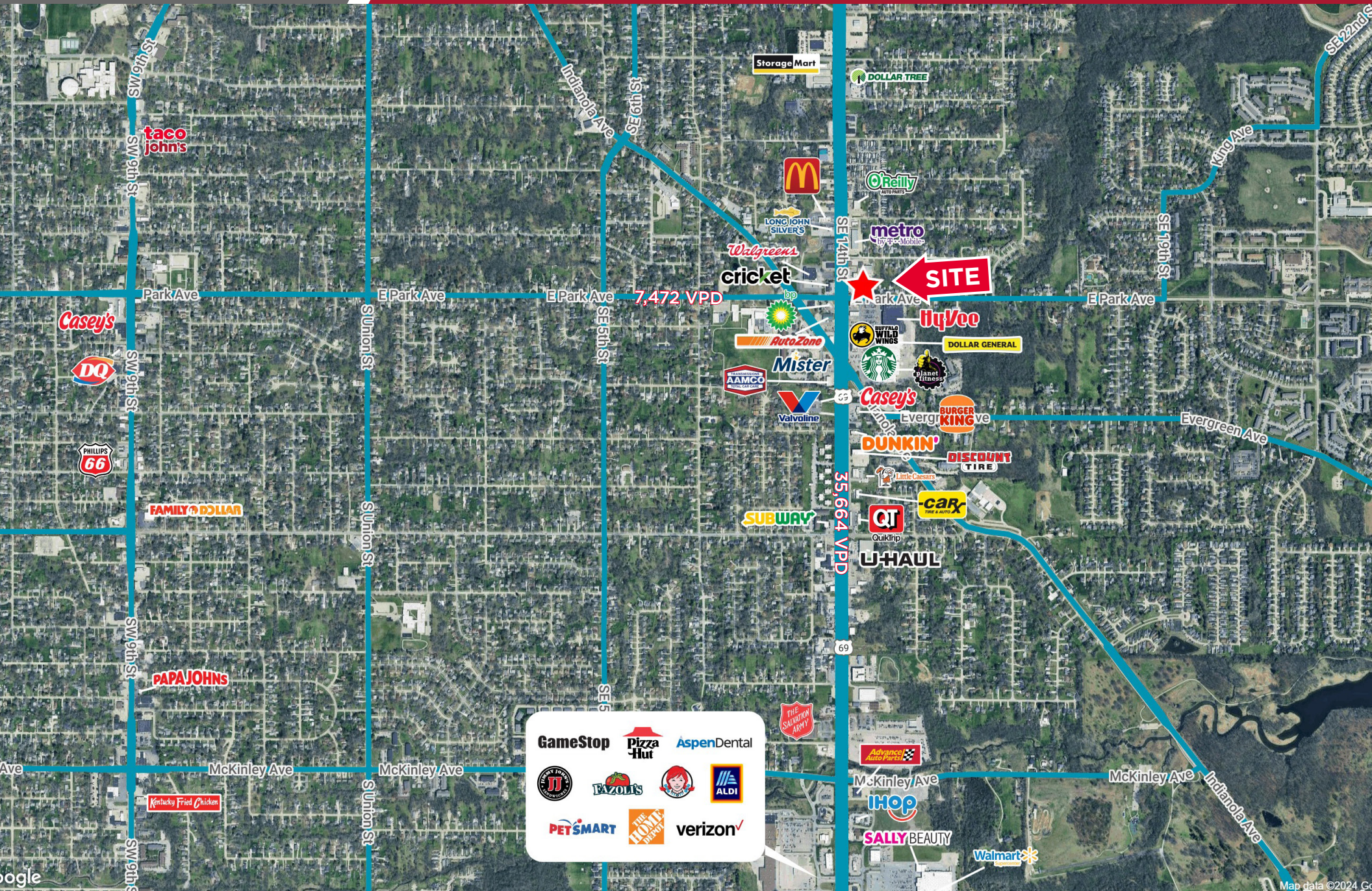






# LOCATION

## DES MOINES, IA







**CUSHMAN &  
WAKEFIELD**

Iowa Commercial Advisors

## CONTACT

**JORDAN BOUSLOG**

Senior Associate

+1 515 402 9131

[jbouslog@iowaca.com](mailto:jbouslog@iowaca.com)

**BRANDON FITZ**

Senior Associate

+1 319 400 0202

[bfitz@iowaca.com](mailto:bfitz@iowaca.com)

**MARK E. TIMMINS, J.D.**

Senior Associate

+1 515 988 2765

[mtimmins@iowaca.com](mailto:mtimmins@iowaca.com)

*Independently Owned and Operated / A Member of the Cushman & Wakefield Alliance*

©2024 Cushman & Wakefield. All rights reserved. The information contained in this communication is strictly confidential. This information has been obtained from sources believed to be reliable but has not been verified. No warranty or representation, express or implied, is made as to the condition of the property (or properties) referenced herein or as to the accuracy or completeness of the information contained herein, and same is submitted subject to errors, omissions, change of price, rental or other conditions, withdrawal without notice, and to any special listing conditions imposed by the property owner(s). Any projections, opinions or estimates are subject to uncertainty and do not signify current or future property performance.