

CUSHMAN &
WAKEFIELD



4,969 SF FOR LEASE

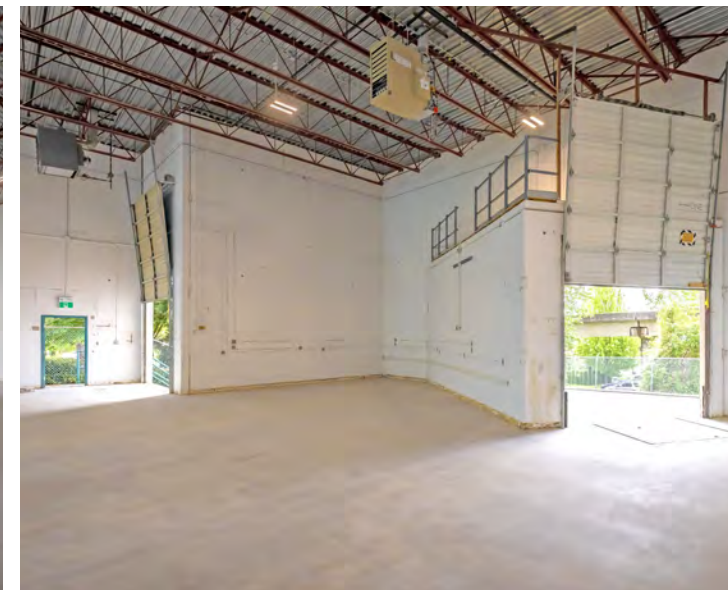
7541

CONWAY AVENUE UNIT 6 & 7

Burnaby, BC

Jordan Sengara
Personal Real Estate Corporation
Associate Vice President
+1 604 782 6066
jordan.sengara@cushwake.com

Brando Riley
Associate
Direct: +1 604 608 5941
Cell: +1 778 855 7550
brando.riley@cushwake.com



4,969 SF

AVAILABLE
ALL GROUND FLOOR

\$21.00 PSF,NNN

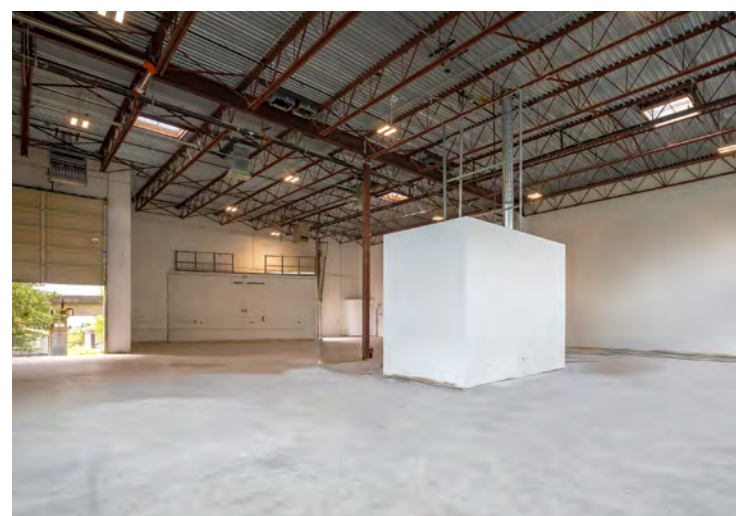
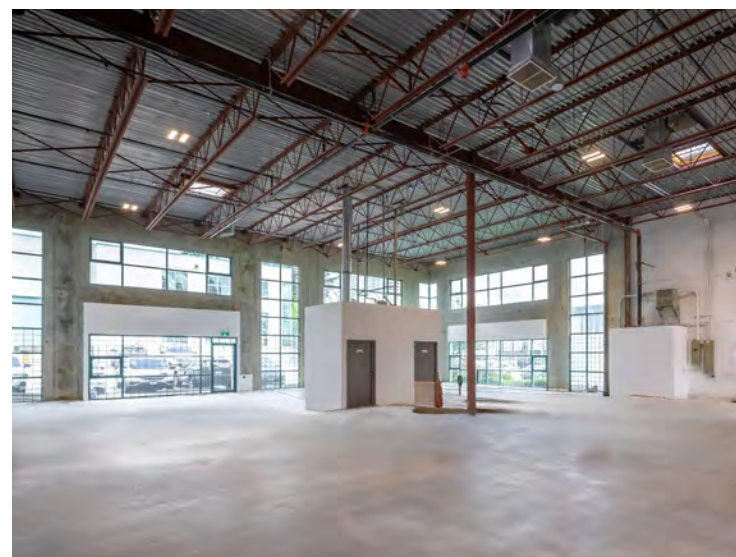
ADDITIONAL
RENT TBD

June 1, 2025

TIMING / AVAILABILITY

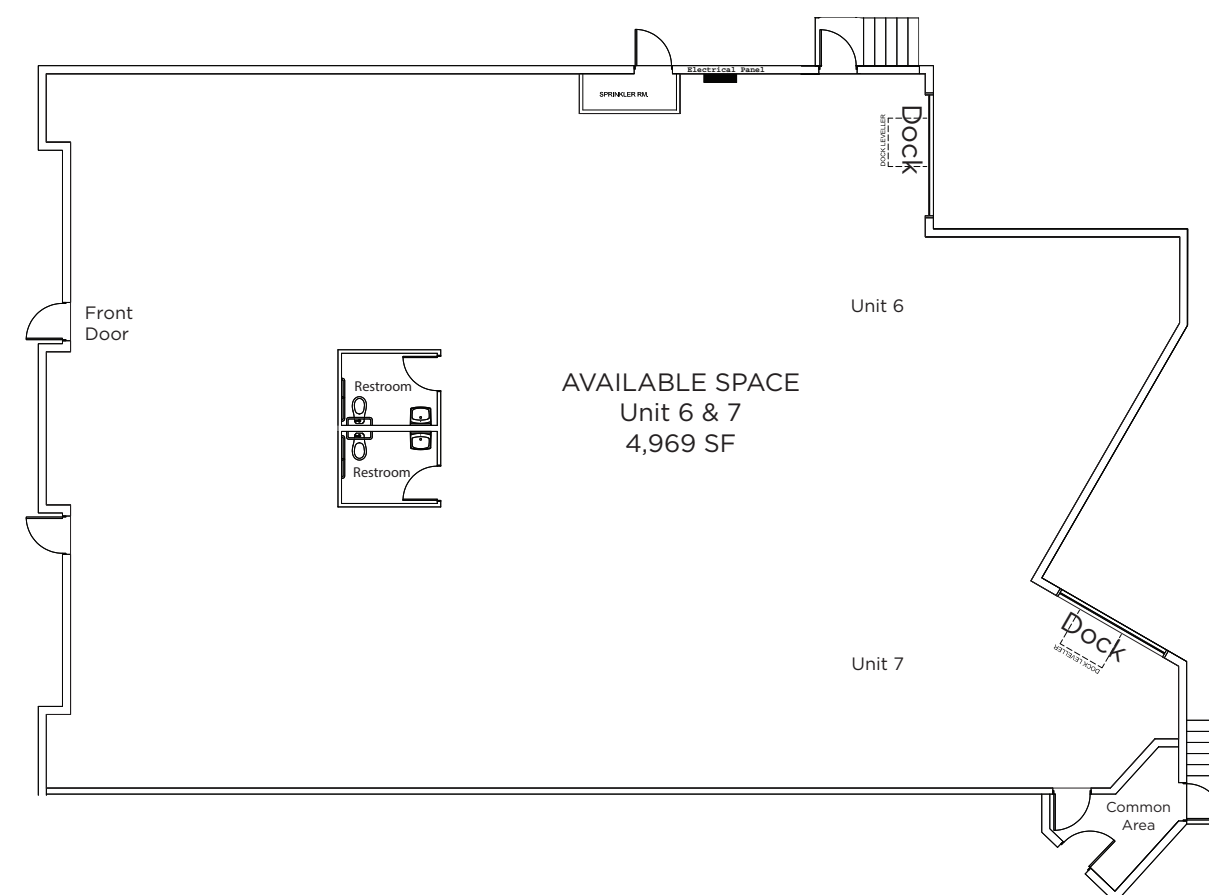
BUILDING FEATURES

- Ground floor warehouse only
- Over 21' clear ceiling height in the warehouse area
- Rear dock level loading (2 docks)
- 3-phase power
- Abundant natural light
- Surface parking
- Fully fenced and secure complex
- Fob access after 7pm
- M-2 (General Industrial District)



1ST FLOOR

Warehouse	4,969 SF
Total Available Area	4,969 SF





LOCATION

The subject property is located on block south of Beresford Street and East of Gilley Avenue in the Beresford corridor of South Burnaby. The location provides close proximity to Edmonds and Royal Oak SkyTrain stations.



700 West Georgia Street, Suite 1200 / PO Box 10023, Pacific Centre / Vancouver, BC V7Y 1A1 / 604 683 3111 / 1 877 788 3111 / cushmanwakefield.com

©2025 Cushman & Wakefield. All rights reserved. The information contained in this communication is strictly confidential. This information has been obtained from sources believed to be reliable but has not been verified. NO WARRANTY OR REPRESENTATION, EXPRESS OR IMPLIED, IS MADE AS TO THE CONDITION OF THE PROPERTY (OR PROPERTIES) REFERENCED HEREIN OR AS TO THE ACCURACY OR COMPLETENESS OF THE INFORMATION CONTAINED HEREIN, AND SAME IS SUBMITTED SUBJECT TO ERRORS, OMISSIONS, CHANGE OF PRICE, RENTAL OR OTHER CONDITIONS, WITHDRAWAL WITHOUT NOTICE, AND TO ANY SPECIAL LISTING CONDITIONS IMPOSED BY THE PROPERTY OWNER(S). ANY PROJECTIONS, OPINIONS OR ESTIMATES ARE SUBJECT TO UNCERTAINTY AND DO NOT SIGNIFY CURRENT OR FUTURE PROPERTY PERFORMANCE.

