

9,933 SF OFFICE SPACE AVAILABLE FOR SUBLEASE

4610 S. 133RD STREET

Omaha, NE 68137





PROPERTY DESCRIPTION

Located in one of Omaha's most sought-after industrial/flex corridors, this 9,933 SF office space offers a unique opportunity to sublease recently renovated, high-quality office space within a versatile flex building. Situated just off 133rd and I Street, the property provides excellent accessibility and visibility in a thriving business hub.

The space features modern finishes, open workspace and private office configurations, and updated infrastructure ideal for a variety of professional uses. With sublease availability through November 30, 2027, this is a turnkey solution for tenants seeking immediate occupancy in a dynamic and growing area.

BUILDING HIGHLIGHTS

\$13.00 SF NNN

**SUBLEASE
RATE**

9,933 SF

**TOTAL
AVAILABLE**

1984/2020

**YEAR BUILT/
RENOVATED**

GI

ZONING

PARKING RATIO

5.00/1000

29,308 SF

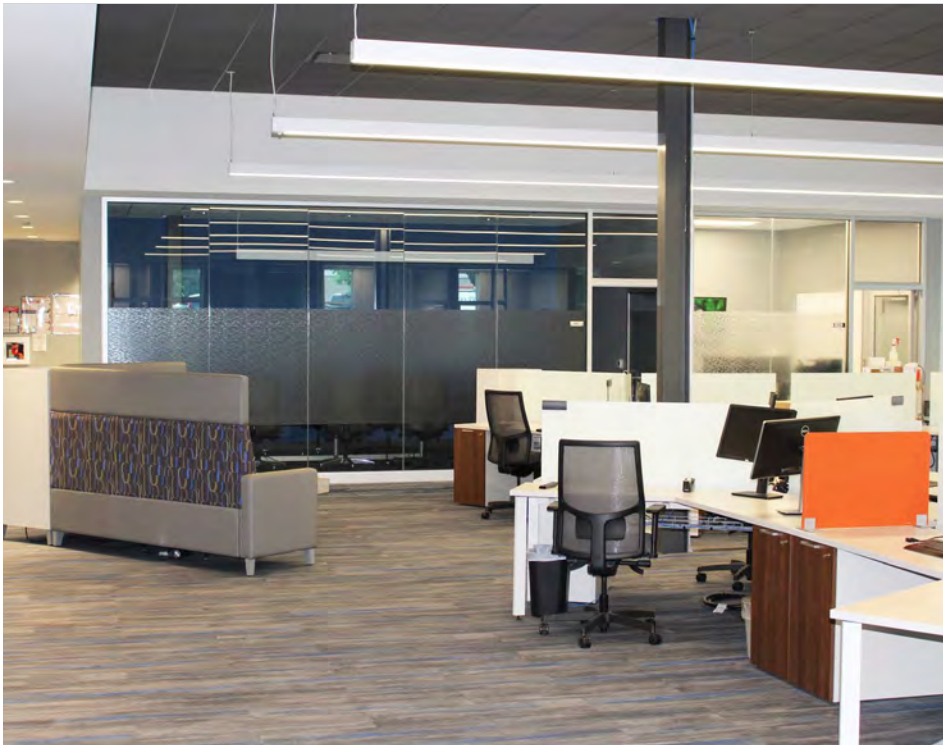
**BUILDING
SIZE**

\$5.09 PSF

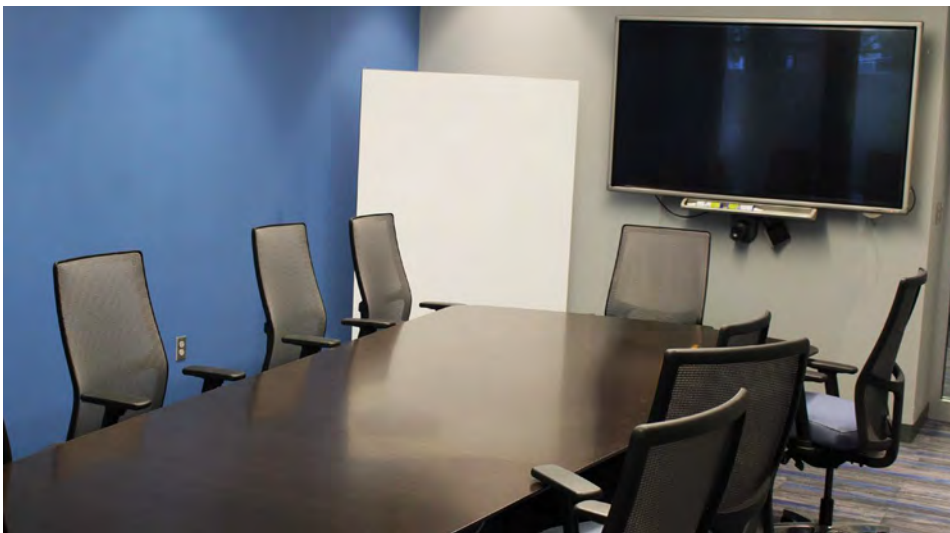
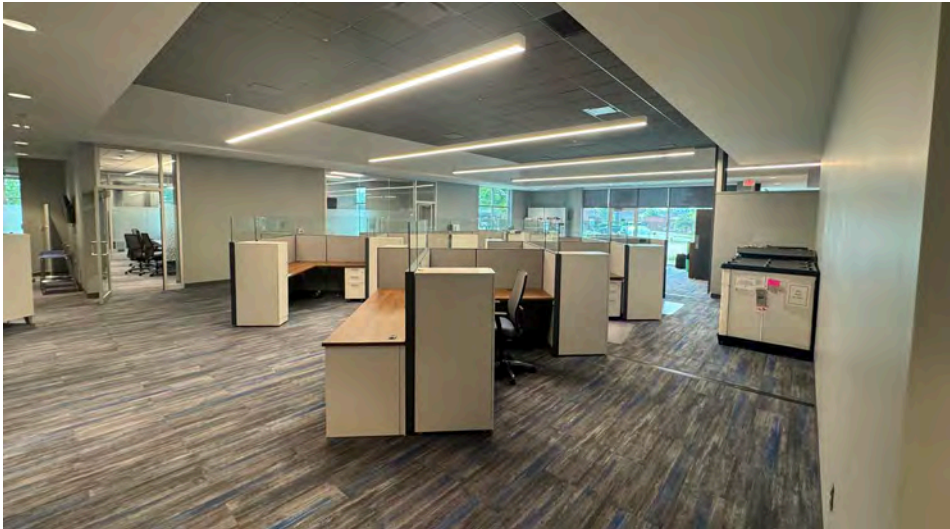
**TOTAL OPERATING
EXPENSES**

2.44 AC

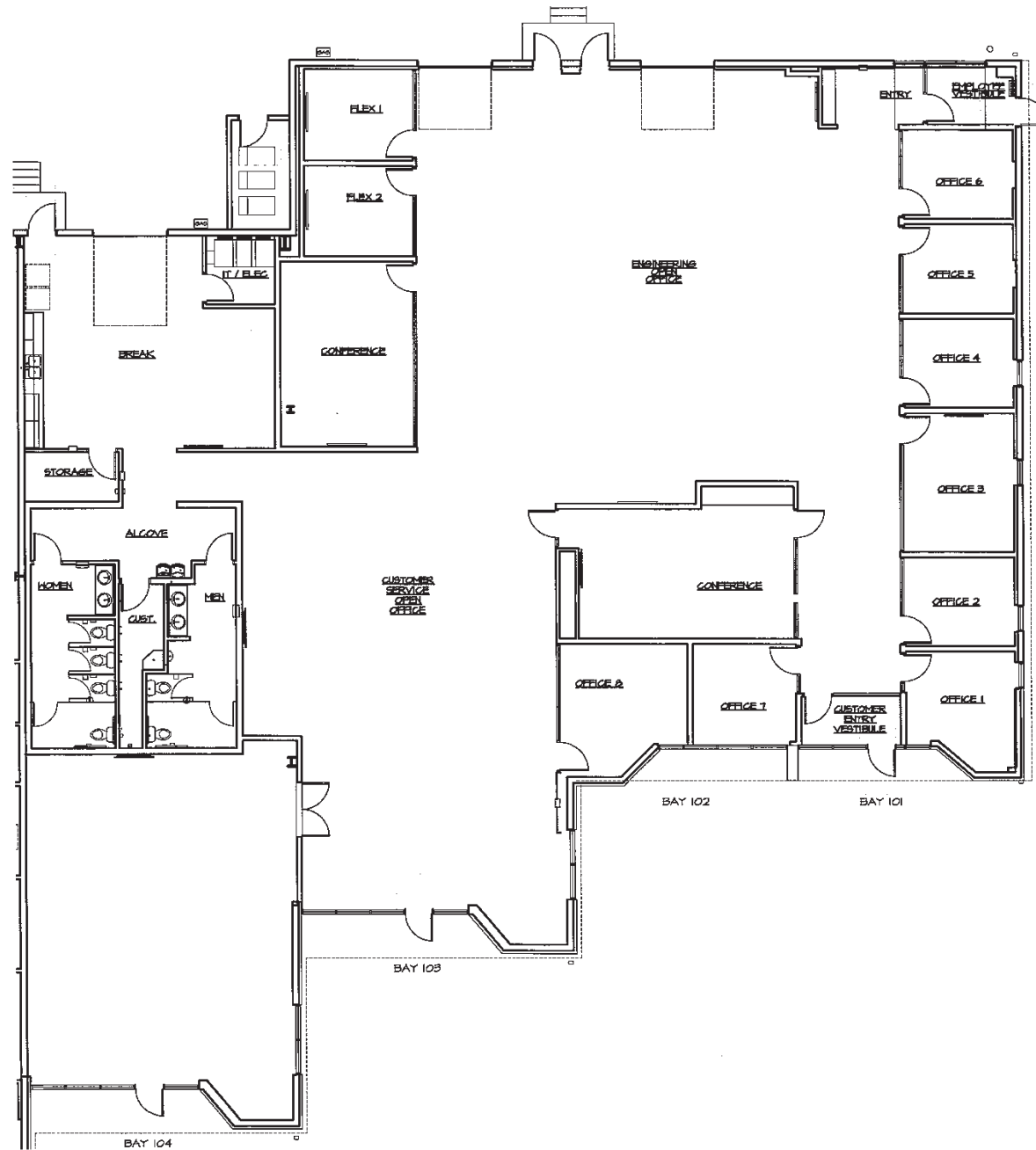
**SITE
AREA**



PROPERTY PHOTOS



FLOOR PLAN



FOR MORE INFORMATION, PLEASE CONTACT:

TJ Twit

Executive Director - Investments
+1 402 212 5476
tj.twit@lundco.com

Christian Jensen

Associate
+1 402 548 4013
christian.jensen@lundco.com

James Boulay, JR.

Associate
+1 402 594 5187
jj.boulay@lundco.com



Independently Owned and Operated / A Member of the Cushman & Wakefield Alliance

©2025 Cushman & Wakefield. All rights reserved. The information contained in this communication is strictly confidential. This information has been obtained from sources believed to be reliable but has not been verified. NO WARRANTY OR REPRESENTATION, EXPRESS OR IMPLIED, IS MADE AS TO THE CONDITION OF THE PROPERTY (OR PROPERTIES) REFERENCED HEREIN OR AS TO THE ACCURACY OR COMPLETENESS OF THE INFORMATION CONTAINED HEREIN, AND SAME IS SUBMITTED SUBJECT TO ERRORS, OMISSIONS, CHANGE OF PRICE, RENTAL OR OTHER CONDITIONS, WITHDRAWAL WITHOUT NOTICE, AND TO ANY SPECIAL LISTING CONDITIONS IMPOSED BY THE PROPERTY OWNER(S). ANY PROJECTIONS, OPINIONS OR ESTIMATES ARE SUBJECT TO UNCERTAINTY AND DO NOT SIGNIFY CURRENT OR FUTURE PROPERTY PERFORMANCE.



**CUSHMAN &
WAKEFIELD**

**LUND
COMPANY**