

±15,459 SF AVAILABLE

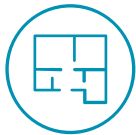
2006 S. HAWTHORNE ROAD

WINSTON-SALEM, NC 27103



2006 S. HAWTHORNE ROAD

PROPERTY DETAILS



15,459 SF
2 Stories



136' Road frontage on
S Hawthorne Rd



4.33/1,000
Parking space

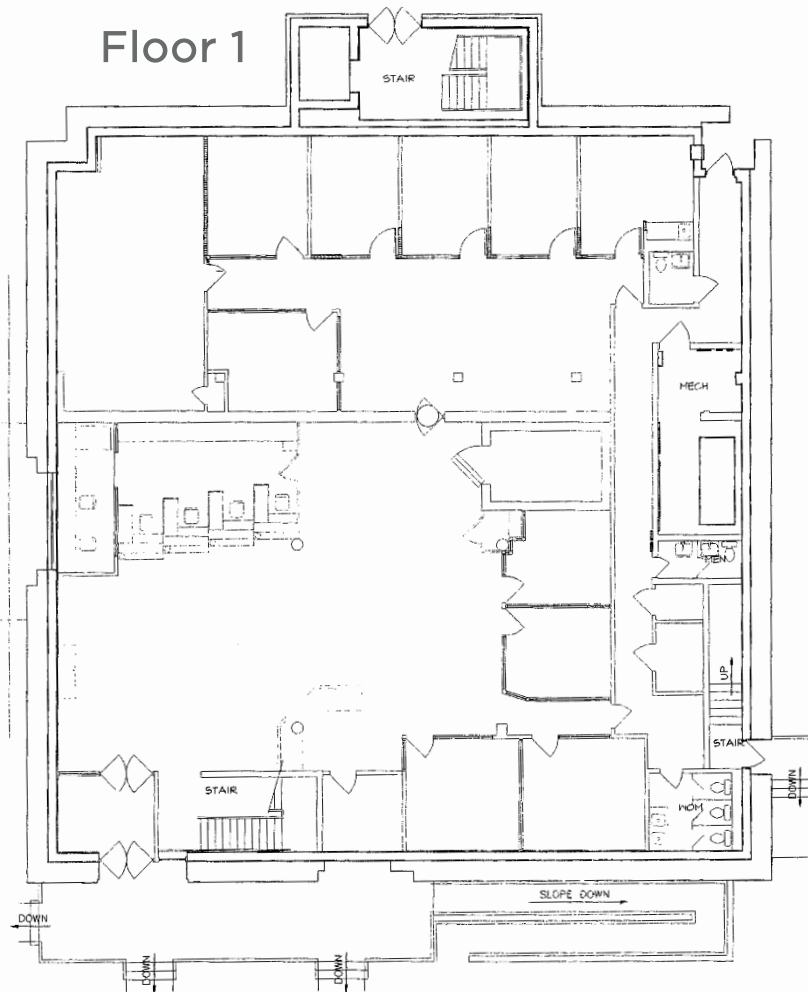


- Zoned Highway Business
- Parking – 67 spaces (4.33/1,000 SF)
- Ideally suited for financial/banking Institutions, professional or medical office users
- High traffic intersection located across from the entrance to Forsyth Medical Center
- Call for pricing

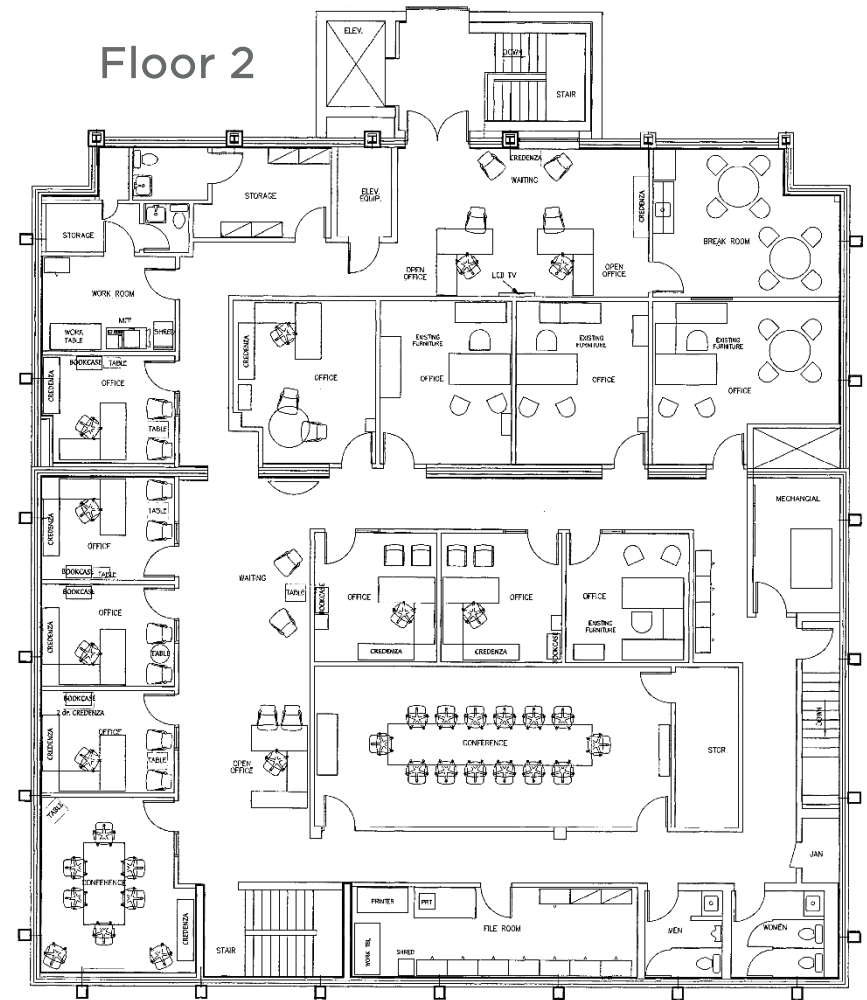
2006 S. HAWTHORNE ROAD

FLOORPLANS

Floor 1

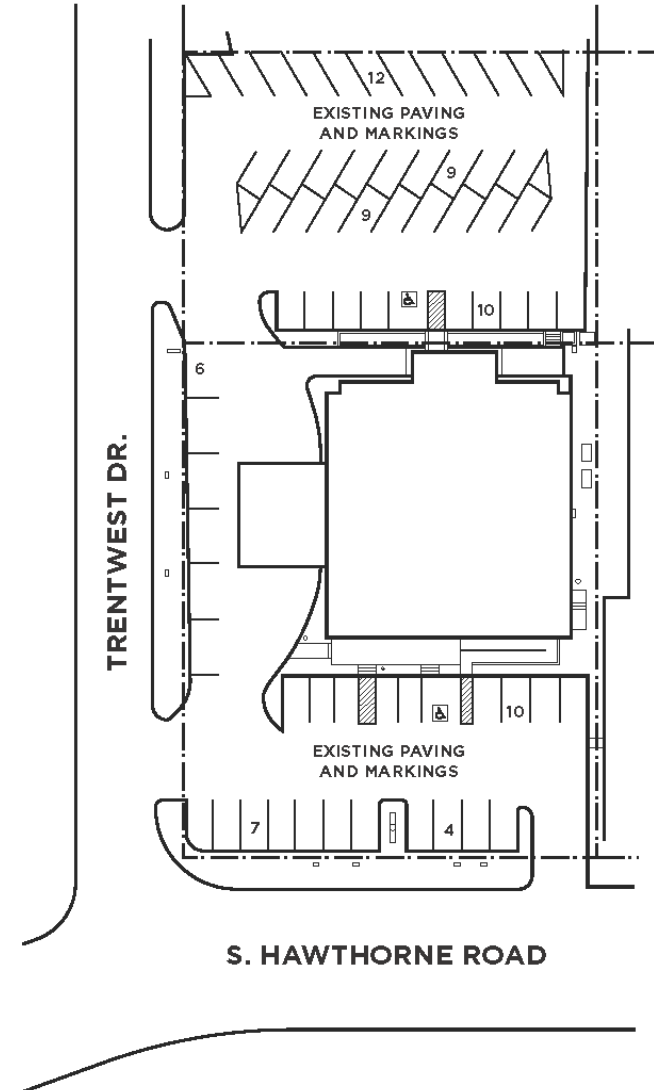


Floor 2



2006 S. HAWTHORNE ROAD

PROPERTY PHOTOS & SITE PLAN



2006 S. HAWTHORNE ROAD





For more information, please contact:

Bobby Finch
Executive Managing Director
+1 336 812 3303
bobby.finch@cushwake.com

Seth Constable
Senior Associate
+1 336 8855
seth.constable@cushwake.com



©2025 Cushman & Wakefield. All rights reserved. The information contained in this communication is strictly confidential. This information has been obtained from sources believed to be reliable but has not been verified. NO WARRANTY OR REPRESENTATION, EXPRESS OR IMPLIED, IS MADE AS TO THE CONDITION OF THE PROPERTY (OR PROPERTIES) REFERENCED HEREIN OR AS TO THE ACCURACY OR COMPLETENESS OF THE INFORMATION CONTAINED HEREIN, AND SAME IS SUBMITTED SUBJECT TO ERRORS, OMISSIONS, CHANGE OF PRICE, RENTAL OR OTHER CONDITIONS, WITHDRAWAL WITHOUT NOTICE, AND TO ANY SPECIAL LISTING CONDITIONS IMPOSED BY THE PROPERTY OWNER(S). ANY PROJECTIONS, OPINIONS OR ESTIMATES ARE SUBJECT TO UNCERTAINTY AND DO NOT SIGNIFY CURRENT OR FUTURE PROPERTY PERFORMANCE.