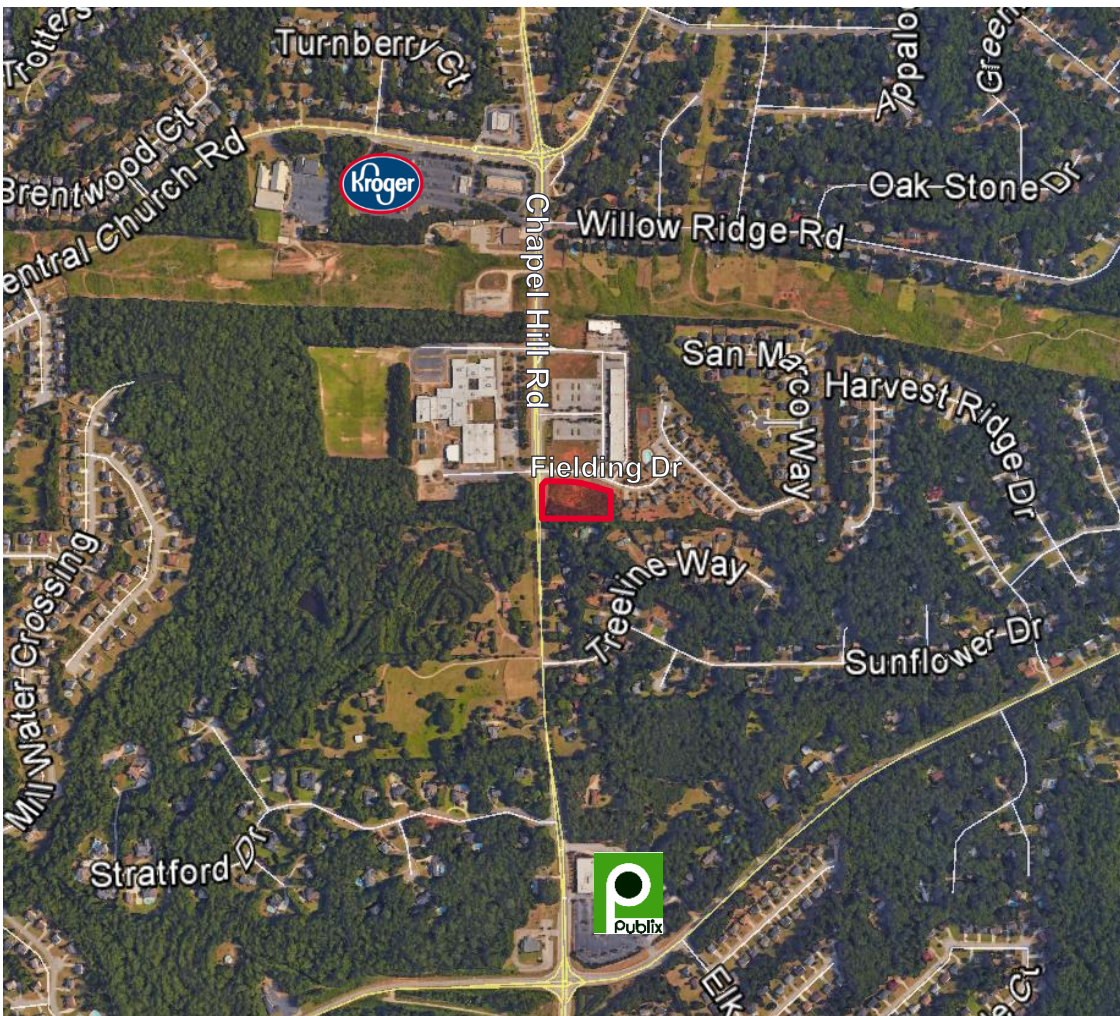


LAND FOR SALE

2.24 Acres | Price: **MAKE AN OFFER**

- ❑ Zoned: C-C
- ❑ Frontage: Chapel Hill Rd (with 1 curb cut) Fielding Dr
- ❑ Traffic Count: Chapel Hill Rd: 17,600 VPD



Chapel Hill & Fielding Drive

4005 Fielding Dr-Douglasville, GA 30135

- Close proximity to Publix and Kroger
- South of Chapel Hills Golf Club
- South of Arbor Place Mall
- Across from Chapel Hill Middle School



For more information contact:

Shea Meddin | Senior Director
404.853.5209
Shea.Meddin@cushwake.com

Dean McNaughton | Senior Director
404.853.5363
Dean.McNaughton@cushwake.com

Peter Glover | Senior Director
404.853.5379
Peter.Glover@cushwake.com

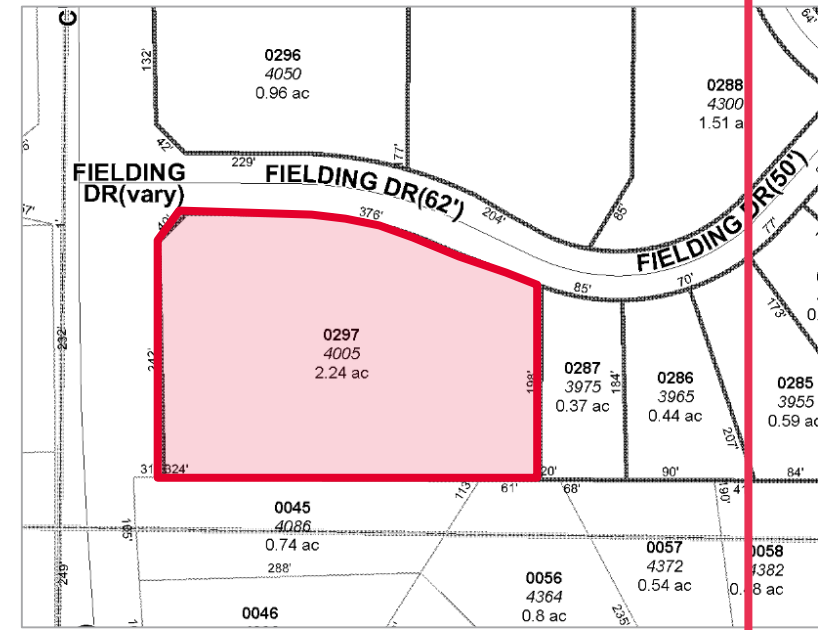
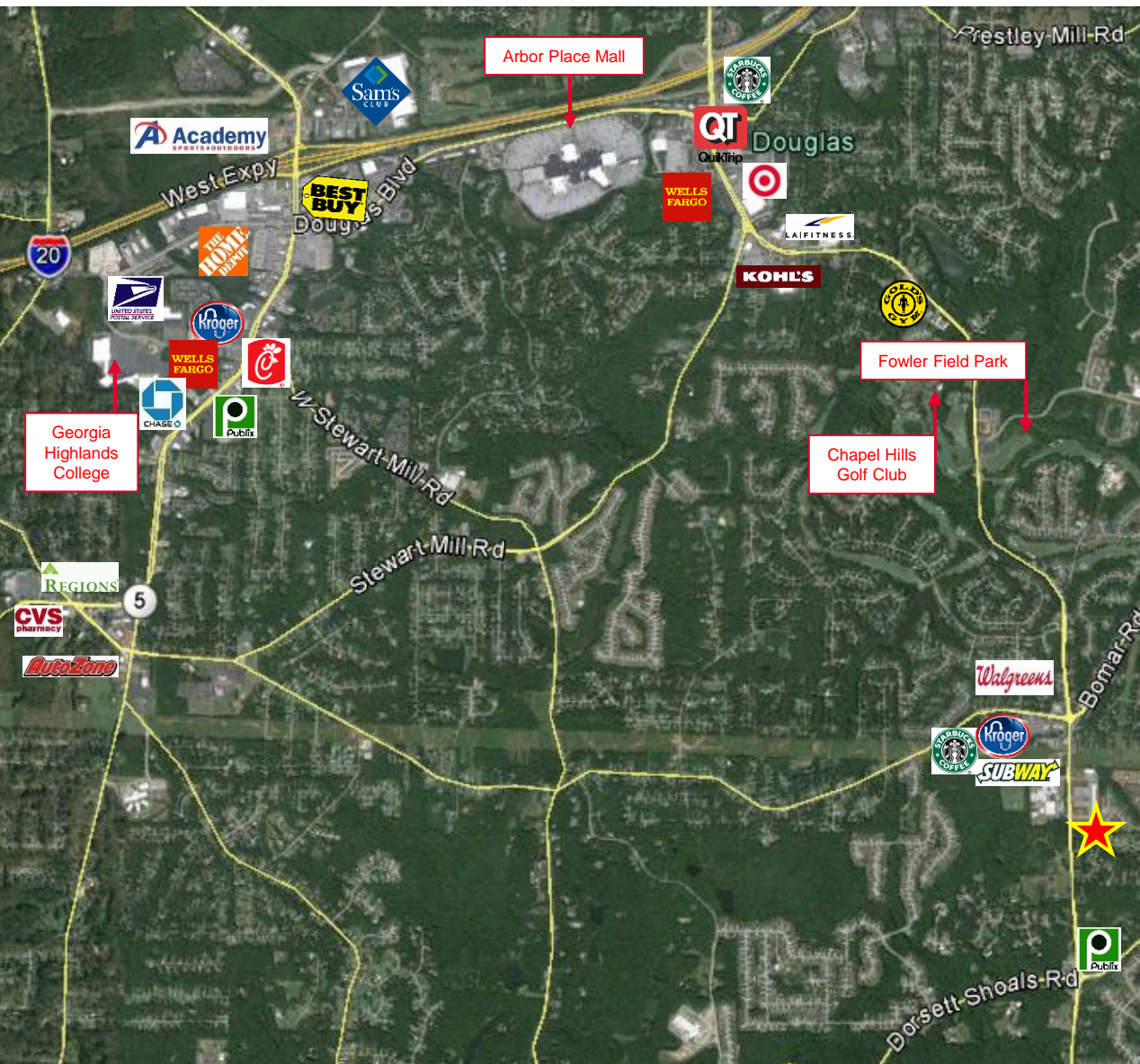


LAND FOR SALE

2.24 Acres | Price: **MAKE AN OFFER**

Chapel Hill & Fielding Drive

4005 Fielding Dr-Douglasville, GA 30135



For more information contact:

Shea Meddin | Senior Director
404.853.5209
Shea.Meddin@cushwake.com

Dean McNaughton | Senior Director
404.853.5363
Dean.McNaughton@cushwake.com

Peter Glover | Senior Director
404.853.5379
Peter.Glover@cushwake.com

