

TOWNHOUSE REDEVELOPMENT SITE



10485 JONES BRIDGE RD.

JOHNS CREEK, GA 30022

5.54± ACRES

PROPERTY HIGHLIGHTS

ACREAGE
5.54 ±



CURRENT USE

The Cohen Home - a closed 42 unit assisted care facility



CURRENT ZONING

C-1, Johns Creek, GA



TAX INFORMATION

APN: 11-0290-0097-037-2, Fulton County



PROPOSED

47 to 49-unit townhouse redevelopment with zoning



DEAN MCNAUGHTON

Senior Director

D: +1 404 853 5363

M: +1 404 402 3373

F: +1 404-875 4637

dean.mcnaughton@cushwake.com

PETER GLOVER

Senior Director

+1 (404) 853-5379

+1 (404) 273-4464

peter.glover@cushwake.com

1180 Peachtree St., NE, Suite 3100
Atlanta, GA 30309
+1 404 875 1000



cushmanwakefield.com

©2023 Cushman & Wakefield. All rights reserved. The information contained in this communication is strictly confidential. This information has been obtained from sources believed to be reliable but has not been verified. NO WARRANTY OR REPRESENTATION, EXPRESS OR IMPLIED, IS MADE AS TO THE CONDITION OF THE PROPERTY (OR PROPERTIES) REFERENCED HEREIN OR AS TO THE ACCURACY OR COMPLETENESS OF THE INFORMATION CONTAINED HEREIN, AND SAME IS SUBMITTED SUBJECT TO ERRORS, OMISSIONS, CHANGE OF PRICE, RENTAL OR OTHER CONDITIONS, WITHDRAWAL WITHOUT NOTICE, AND TO ANY SPECIAL LISTING CONDITIONS IMPOSED BY THE PROPERTY OWNER(S). ANY PROJECTIONS, OPINIONS OR ESTIMATES ARE SUBJECT TO UNCERTAINTY AND DO NOT SIGNIFY CURRENT OR FUTURE PROPERTY PERFORMANCE.

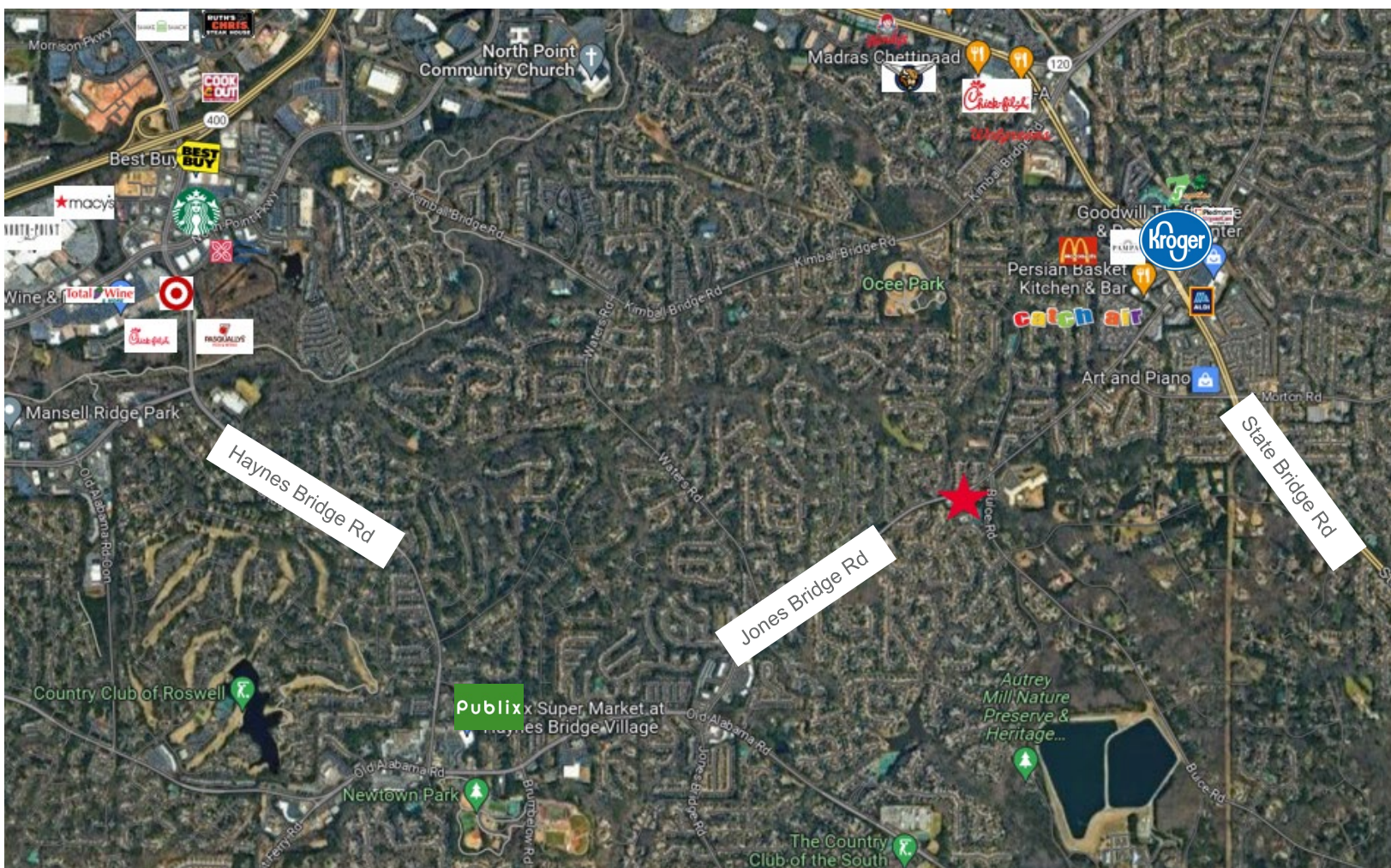
10485 JONES BRIDGE RD.

JOHNS CREEK, GA 30022

5.54± ACRE TOWNHOUSE REDEVELOPMENT SITE



NEIGHBORHOOD AERIAL



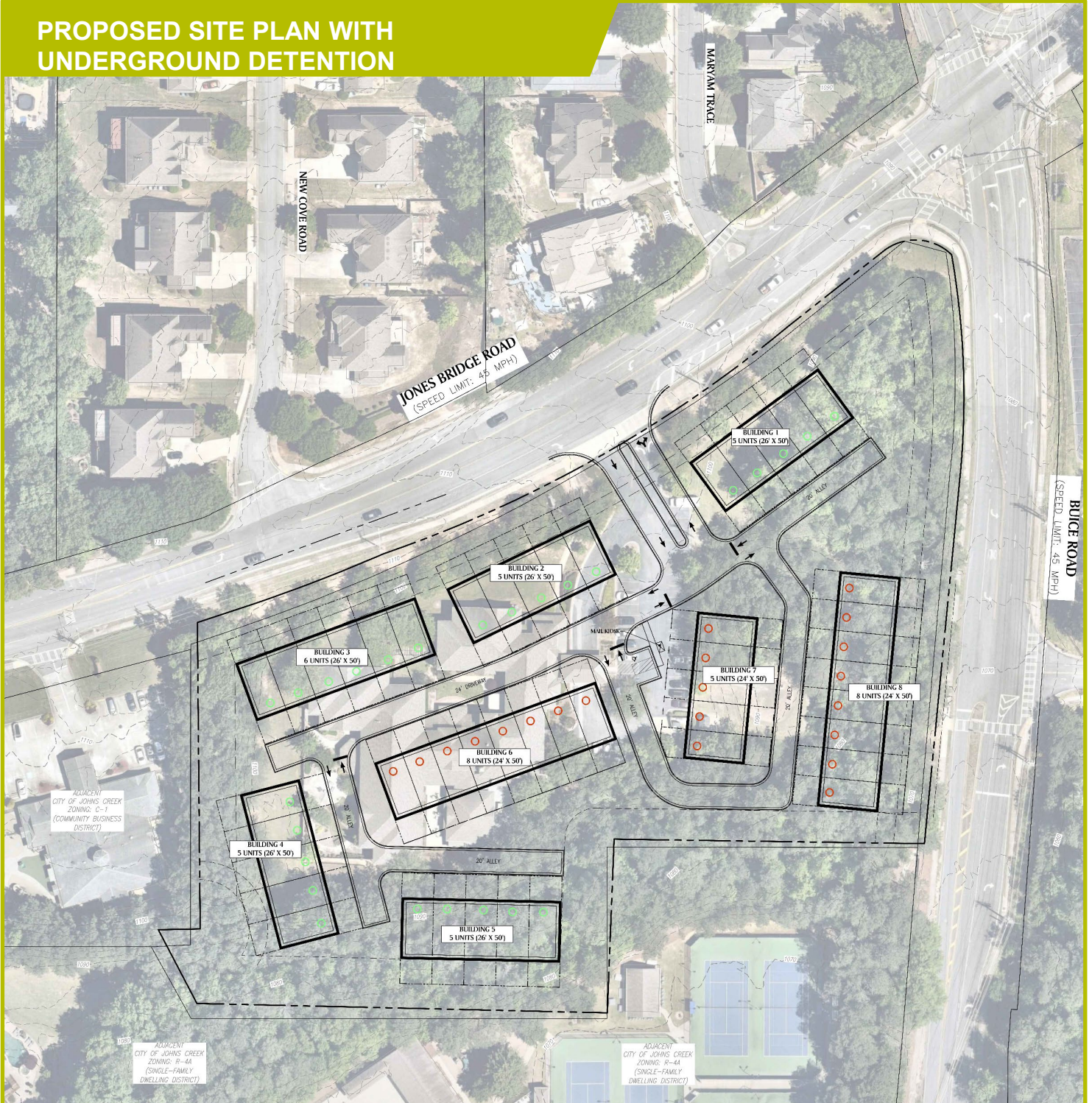
10485 JONES BRIDGE RD.

JOHNS CREEK, GA 30022

5.54± ACRE TOWNHOUSE REDEVELOPMENT SITE



PROPOSED SITE PLAN WITH UNDERGROUND DETENTION





JOHNS CREEK, GA 30022

5.54+ ACRE TOWNHOUSE REDEVELOPMENT SITE

[illegible]