



**CUSHMAN &
WAKEFIELD**

OFFICE SUBLEASE

South Terraces

115 Perimeter Center Place, Atlanta, GA 30346



25,826 RSF

\$26.50/RSF

7/31/2029

5.0/1,000 SF

**AVAILABLE ON
2nd FLOOR**

**FULL-SERVICE
QUOTED RATE**

**SUBLEASE
EXPIRATION**

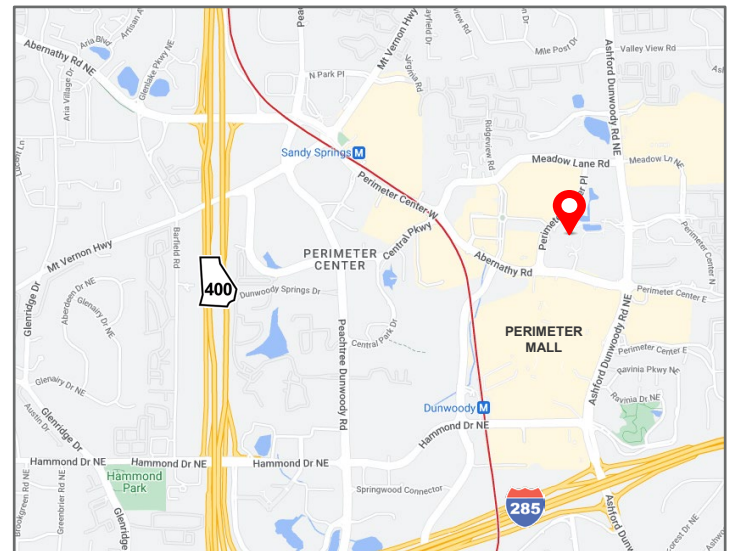
**COVERED
PARKING**

Space Features & Highlights

- Excellent views and elevator lobby exposure
- Highly improved space
- Move-in ready
- Furniture optional

Excellent Amenities & Location

- Highly amenitized property with conference center, food options, fitness center and outdoor gathering space with putting green
- MARTA shuttle
- Walkable to abundant restaurants, retail and hotels



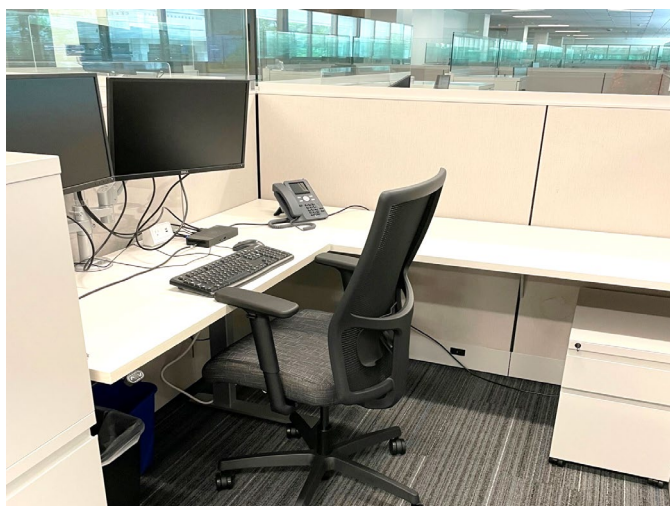
KIRK DIAMOND
Executive Managing Director
(404) 682 3407
Kirk.diamond@cushwake.com
License #150352

APRIL PARRISH
Executive Director
(404) 682 3413
april.Parrish@cushwake.com
License #301359

ERIN SMITH
Senior Director
(404) 682 3444
erin.smith@cushwake.com
License #337500

CUSHMAN & WAKEFIELD, INC.
1180 Peachtree Street, NE, Suite 3100
Atlanta, Georgia 30309
www.cushmanwakefield.com

The depiction in the included photograph of any person, entity, sign, logo or property, other than Cushman & Wakefield's (C&W) client and the property offered by C&W, is incidental only, and is not intended to connote any affiliation, connection, association, sponsorship or approval by or between that which is incidentally depicted and C&W or its client. This listing shall not be deemed an offer to lease, sublease or sell such property; and, in the event of any transaction for such property, no commission shall be earned by or payable to any cooperating broker except if otherwise provided pursuant to the express terms, rates and conditions of C&W's agreement with its principal, if, as and when such commission (if any) is actually received from such principal. (A copy of the rates and conditions referred to above with respect to this property is available upon request.)



KIRK DIAMOND
Executive Managing Director
(404) 682 3407
Kirk.diamond@cushwake.com
License #150352

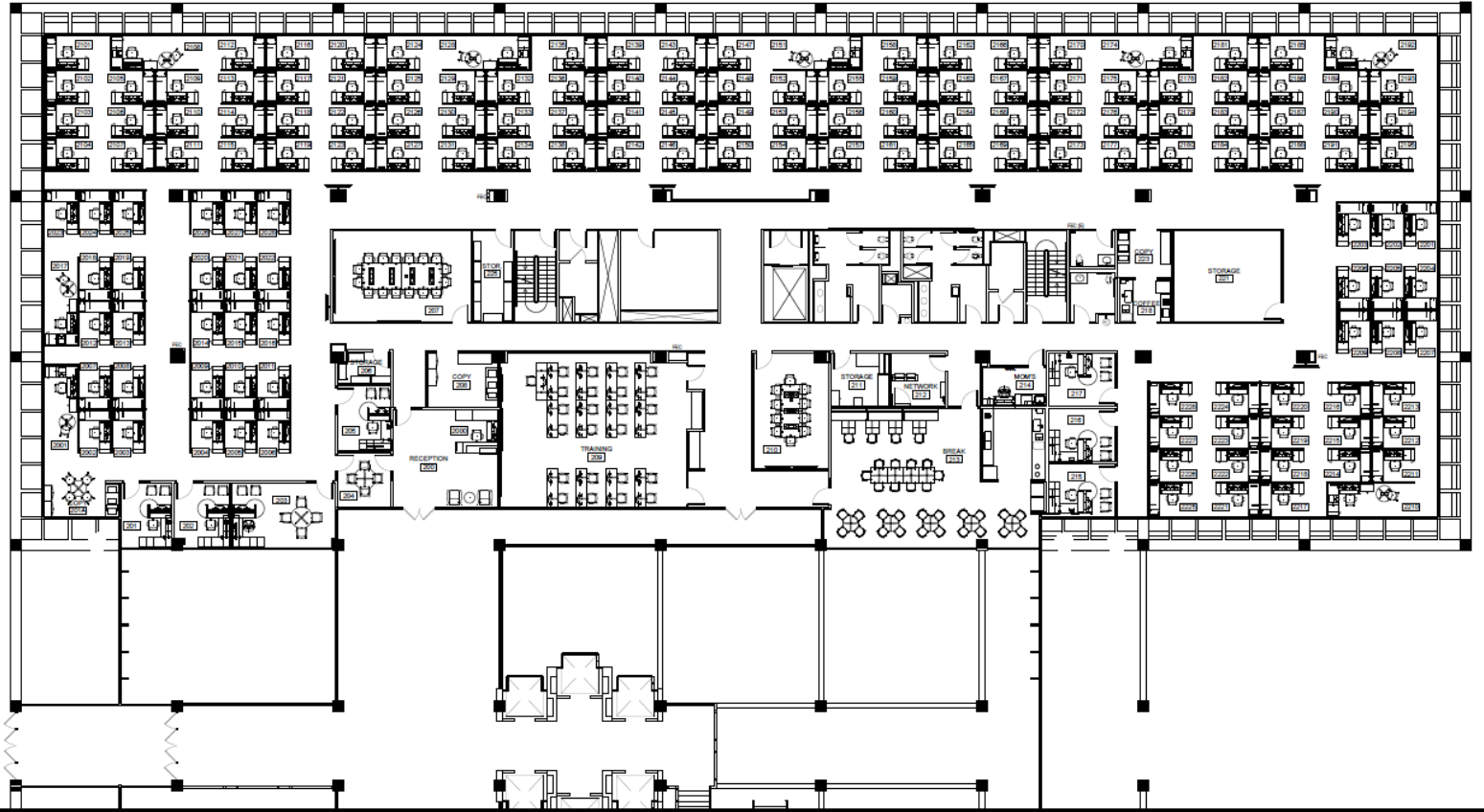
APRIL PARRISH
Executive Director
(404) 682 3413
april.Parrish@cushwake.com
License #301359

ERIN SMITH
Senior Director
(404) 682 3444
erin.smith@cushwake.com
License #337500

CUSHMAN & WAKEFIELD, INC.
1180 Peachtree Street, NE, Suite 3100
Atlanta, Georgia 30309
www.cushmanwakefield.com

Suite 200 – 25,826 SF

- 151 workstations
- 7 private offices
- 2 conference rooms
- 5 copy/storage rooms
- 1 training room
- 1 huddle room
- 1 break room
- 1 wellness/mother room
- 1 reception



KIRK DIAMOND
Executive Managing Director
(404) 682 3407
Kirk.diamond@cushwake.com
License #150352

APRIL PARRISH
Executive Director
(404) 682 3413
april.Parrish@cushwake.com
License #301359

ERIN SMITH
Senior Director
(404) 682 3444
erin.smith@cushwake.com
License #337500

CUSHMAN & WAKEFIELD, INC.
1180 Peachtree Street, NE, Suite 3100
Atlanta, Georgia 30309
www.cushmanwakefield.com