



## ±4,750 SF Industrial Unit For Lease

### Property Highlights

- ±4,750 SF
- ±30% Office
- End-cap Space
- 200 Amps @ 240 Volt
- Dump AC in Warehouse Area
- Bonus Mezzanine Area
- One Grade Level Door
- ±16' Clear Height
- 2/1000 Parking
- Fenced Parking Area - Shared Access
- Available Now

**Tom Snider**  
**Executive Managing Director**  
+1 408 436 3639  
tom.snider@cushwake.com  
LIC #00847073



300 Santana Row, Fifth Floor  
San Jose, California  
P +1 408 615 3400

**cushmanwakefield.com**



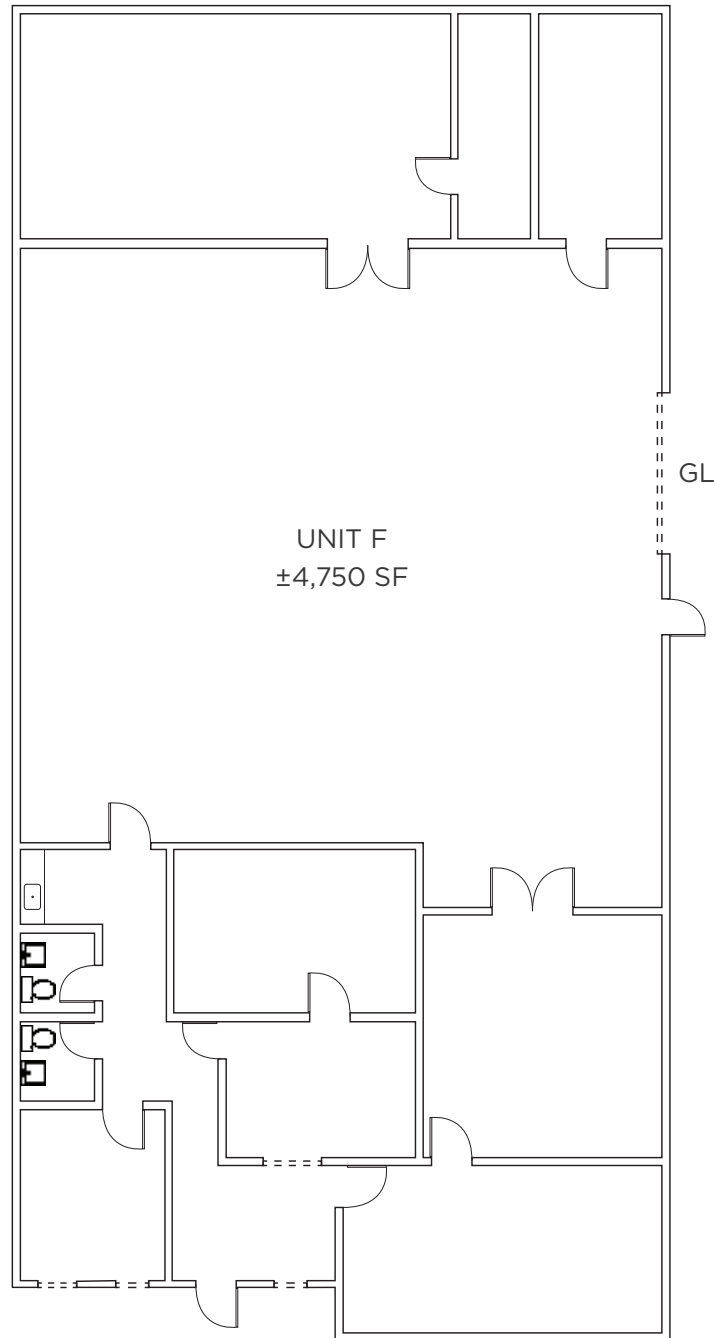
**CUSHMAN &  
WAKEFIELD**

FOR LEASE

**3565 Victor Street**

Unit F, Santa Clara, California

## Floor Plan



**Tom Snider**  
**Executive Managing Director**  
+1 408 436 3639  
tom.snider@cushwake.com  
LIC #00847073

300 Santana Row, Fifth Floor  
San Jose, California  
P +1 408 615 3400

**cushmanwakefield.com**