

**1819 TURNING BASIN DRIVE, SUITE 918**  
**HOUSTON, TX 77029**

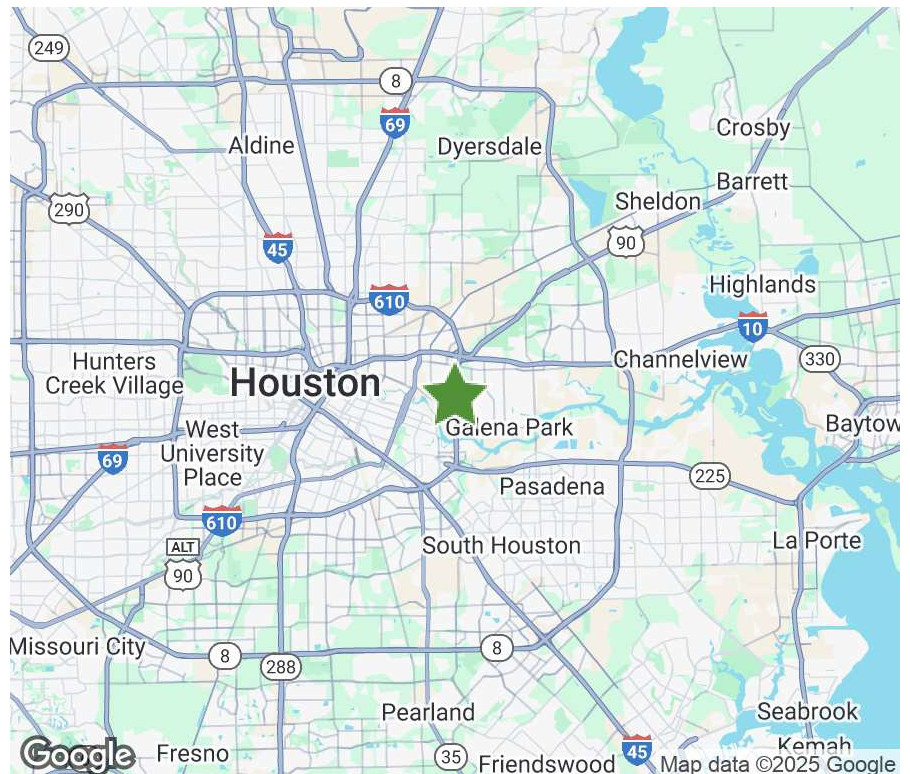


**27,754 SF | FOR LEASE**

The property 1819 Turning Basin Drive is an ideal dock-high, front-load industrial facility for distribution users in Houston's Inner East submarket. The Property has tremendous ingress/ egress to/from the 610 Loop with dedicated on/off ramps and is located two miles south of I-10, which offers convenient access to the Port of Houston.

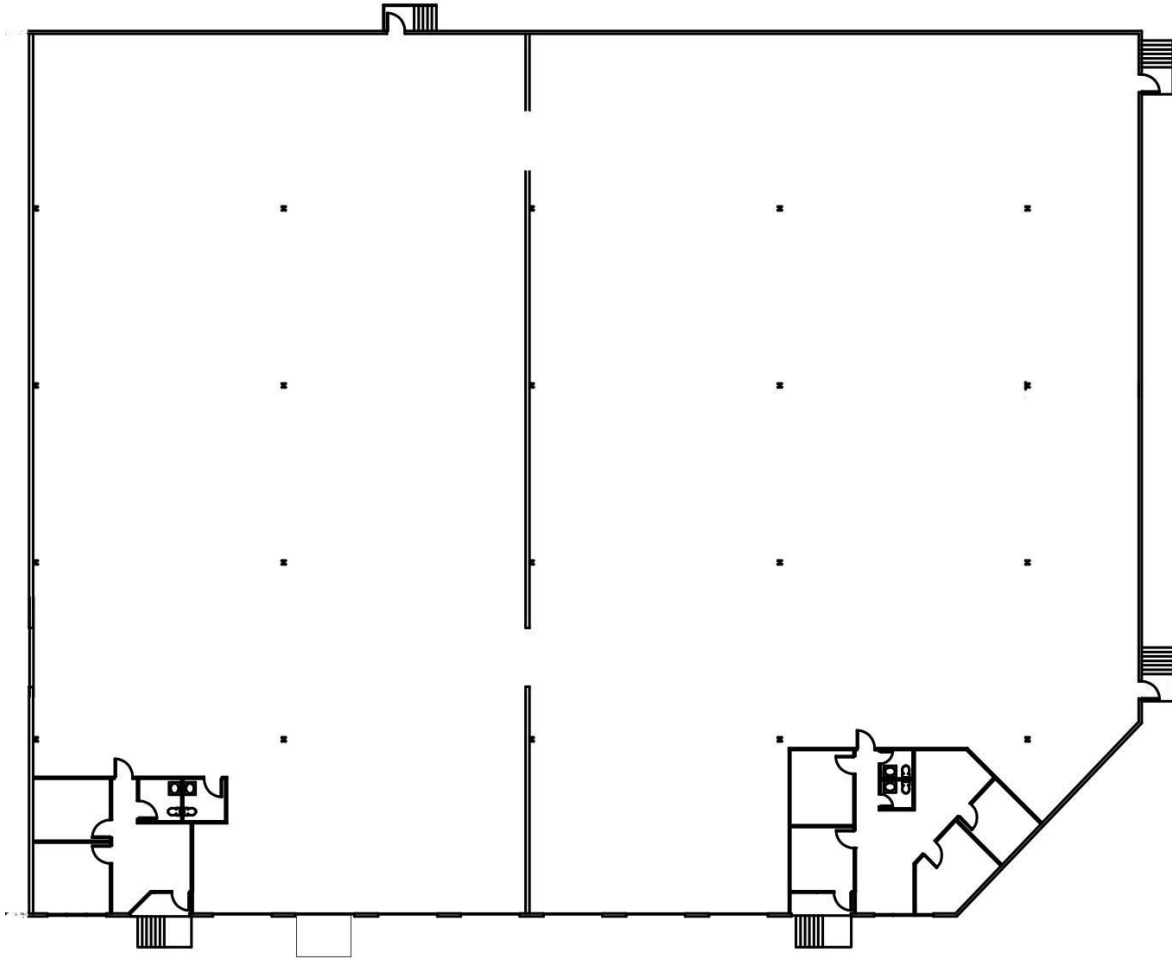
### PROPERTY SPECIFICATIONS

<b>Available Space:</b>	12,637 - 27,754 SF
<b>Available Office:</b>	2,025 SF
<b>Total Building Size:</b>	65,494 SF
<b>Submarket:</b>	Southeast Houston
<b>Clear Height:</b>	18
<b>Dock High Doors:</b>	6
<b>Ramps:</b>	1
<b>Sprinkler:</b>	Non-ESFR



# 1819 TURNING BASIN DRIVE, SUITE 918

12,637 - 27,754 SF | FOR LEASE



## BROKER CONTACT

### David Munson, SIOR

Cushman & Wakefield  
713.913.5473  
david.munson@cushwake.com

### Garrett Thomas

Cushman & Wakefield  
713.260.0244  
garrett.thomas@cushwake.com

## OWNER CONTACT

### Jake Allen

Regional Manager  
312.344.4331  
jallen@FIRT.com

