

6446 LONG POINT

HOUSTON, TX 77055

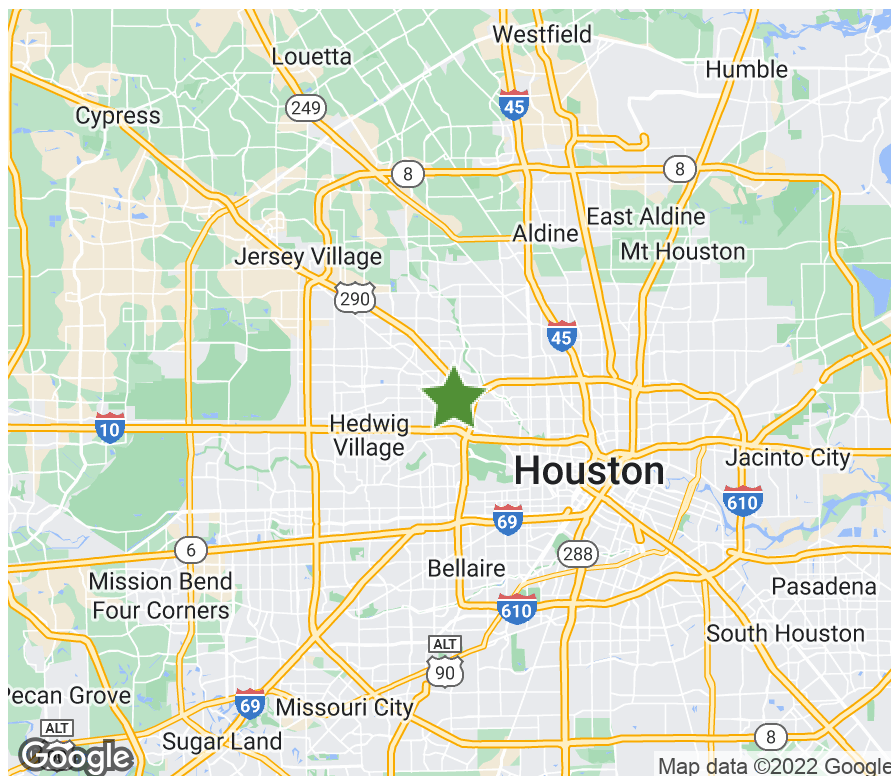


6,640 SF | FOR LEASE

The property 6446 Long Point is a well located warehouse facility in Houston's Northwest submarket. This building is a dock high, front load facility within close proximity to the 610 Loop, Highway 290, Interstate-10 and Hempstead Highway.

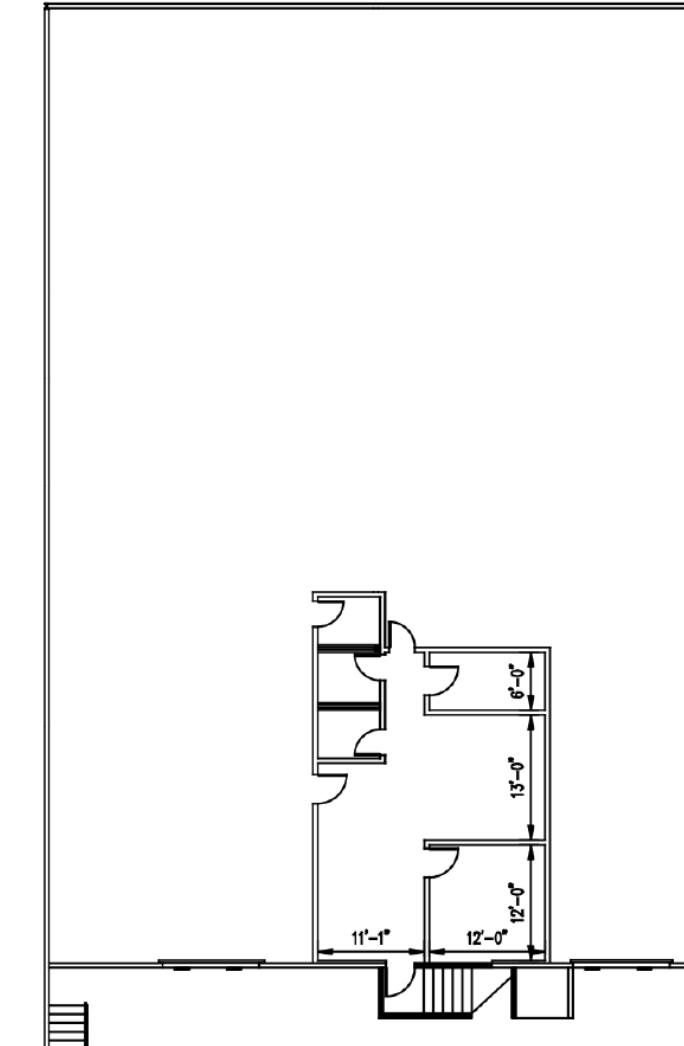
PROPERTY SPECIFICATIONS

Available Space:	6,640 SF
Office:	833 SF
Submarket:	Northwest Houston
Ceiling Height:	18
Dock High Doors:	2
Sprinkler:	NonESFR



6446 LONG POINT

6,640 SF | FOR LEASE



BROKER CONTACTS

David Munson, SIOR

Cushman & Wakefield
713.913.5473
david.munson@cushwake.com

Garrett Thomas

Cushman & Wakefield
713.260.0244
garrett.thomas@cushwake.com



OWNER CONTACT

Jake Allen

Regional Manager
312.344.4331
jallen@firstindustrial.com



1225 North Loop West, Suite 700

Houston, TX 77008

713.681.0885

All information furnished regarding the property for sale, rental or financing is obtained from sources deemed reliable. No representation is made to the accuracy thereof and is submitted subject to errors, omissions, change of price rental or other conditions, prior sale, lease, or financing, or withdrawal without notice. First Industrial Realty Trust, Inc. represents the Seller in this transaction and as such owes all duties and obligations thereto.