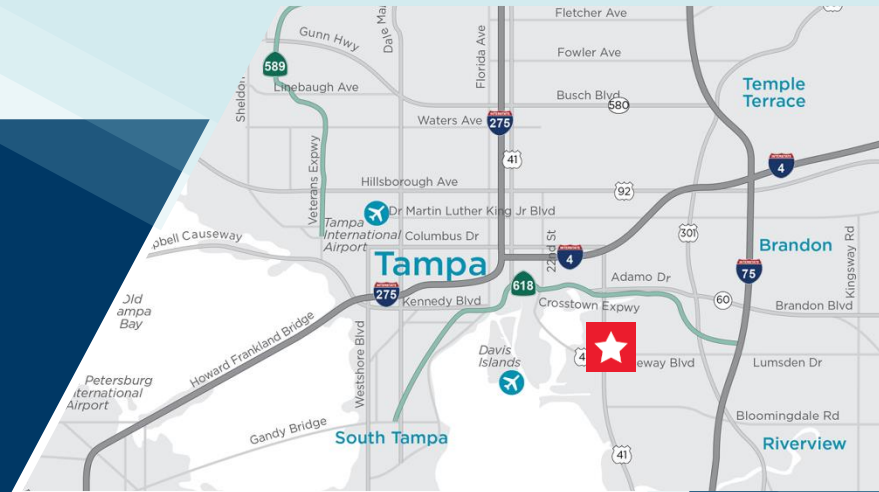


MERIDIAN EAST

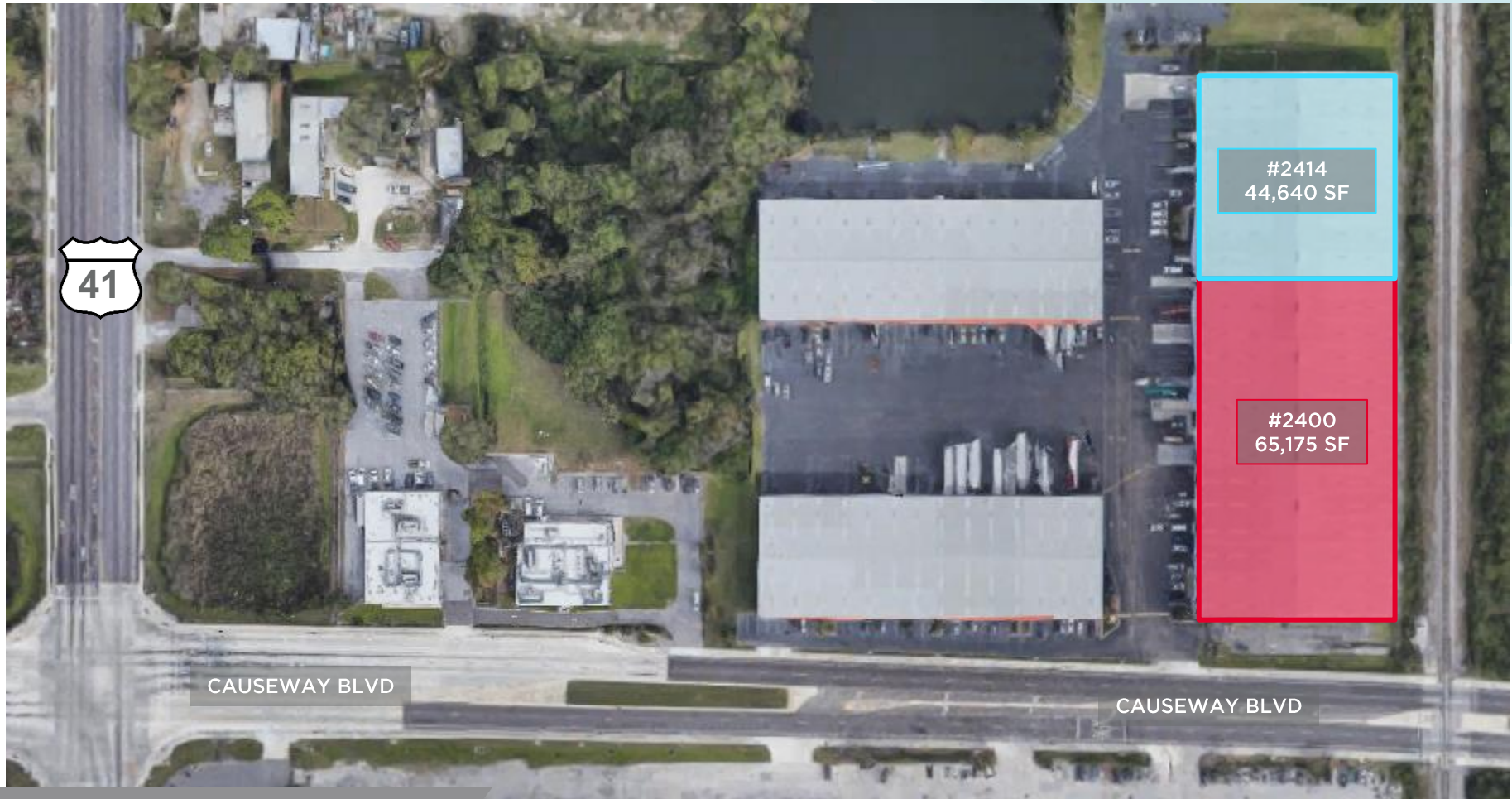
2400 - 2414 GELMAN PLACE
TAMPA, FL 33619



Up to 109,815 SF Available

MERIDIAN EAST

2400 – 2414 Gelman Place
Tampa, FL 33619



PROPERTY HIGHLIGHTS

- Up to 109,815 SF Available
- 20'-24' Clear Height
- Column Spacing: 23'x58'
- Ramp and Dock High Loading
- Electric: 120/208v/300Amps/3 Phase
- Concrete Block Construction
- Fully Sprinklered
- Easy Access to the Port, I-4, Lee Roy Selmon Expressway, US HWY 301, and I-75

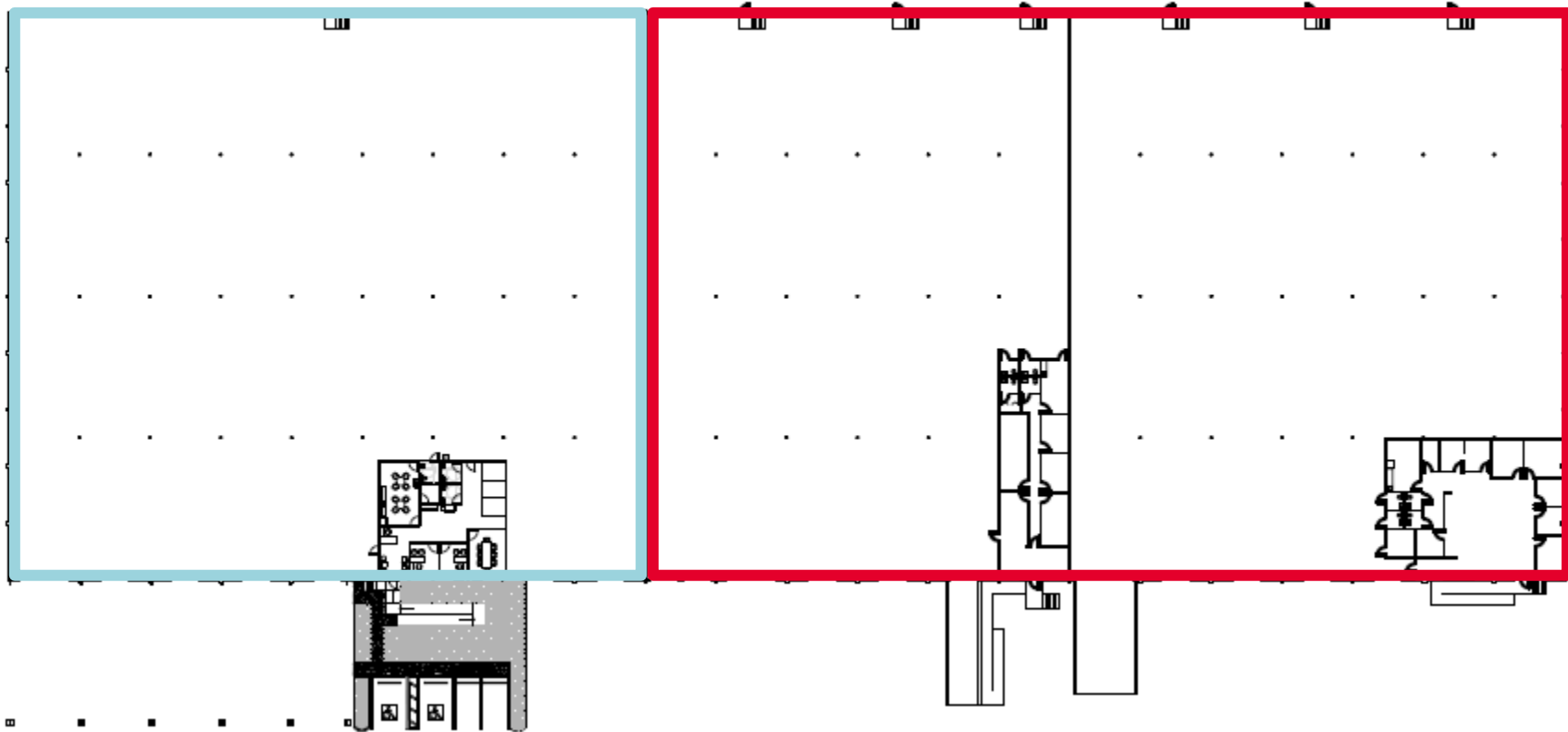
2400-2414 Gelman Place | 109,815 Total SF

2414 Gelman Pl

- 44,640 SF (1,853 Office SF)
- 2 Ramped Doors (1 Oversized)
- 5 Dock Doors
- Available Oct 1, 2022

2400 Gelman Pl

- 65,175 SF
- 3 Ramped Doors (2 Oversized)
- 8 Dock Doors
- Available Jan 1, 2023



FOR ADDITIONAL INFORMATION, PLEASE CONTACT:

TREY CARSWELL, SIOR
Senior Director
+1 813 204 5314
trey.carswell@cushwake.com

LISA ROSS, SIOR
Senior Director
+1 813 424 3211
lisa.ross@cushwake.com

One Tampa City Center
Suite 3300
Tampa, FL 33602
cushmanwakefield.com



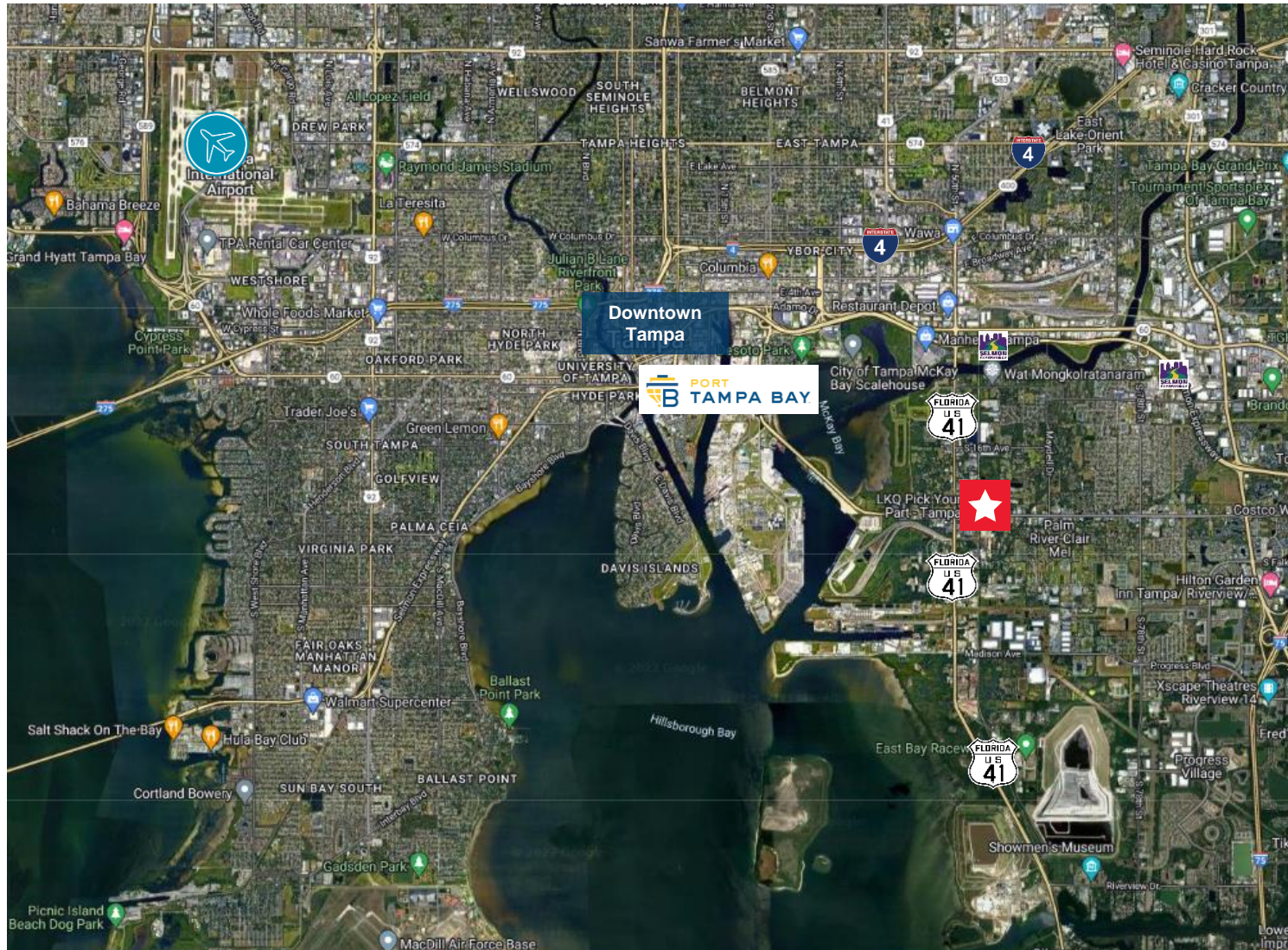
**ALPHA
INDUSTRIAL
PROPERTIES**



**CUSHMAN &
WAKEFIELD**

Meridian East

2400-2414 Gelman Place



FOR ADDITIONAL INFORMATION, PLEASE CONTACT:

TREY CARSWELL, SIOR
Senior Director
+1 813 204 5314
treycarswell@cushwake.com

LISA ROSS, SIOR
Senior Director
+1 813 424 3211
lisa.ross@cushwake.com

One Tampa City Center
Suite 3300
Tampa, FL 33602
cushmanwakefield.com



**ALPHA
INDUSTRIAL
PROPERTIES**



**CUSHMAN &
WAKEFIELD**