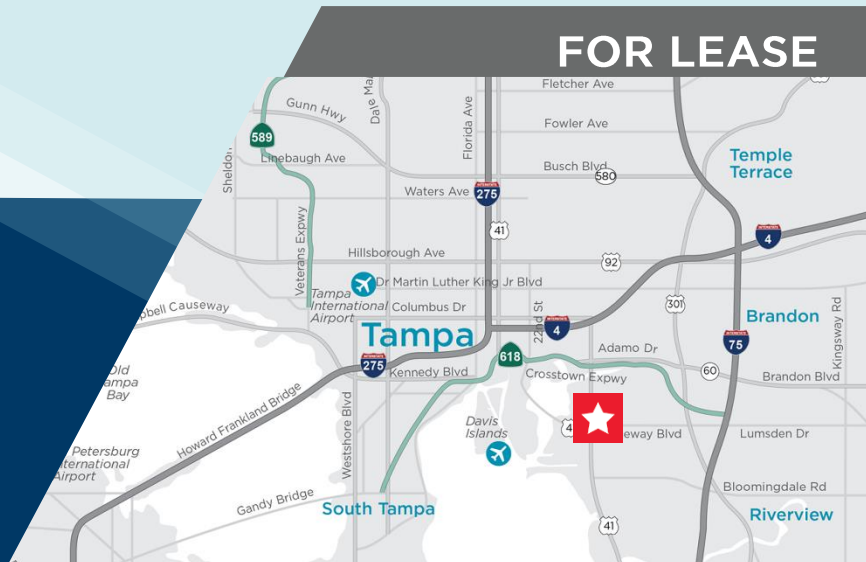


# MERIDIAN EAST

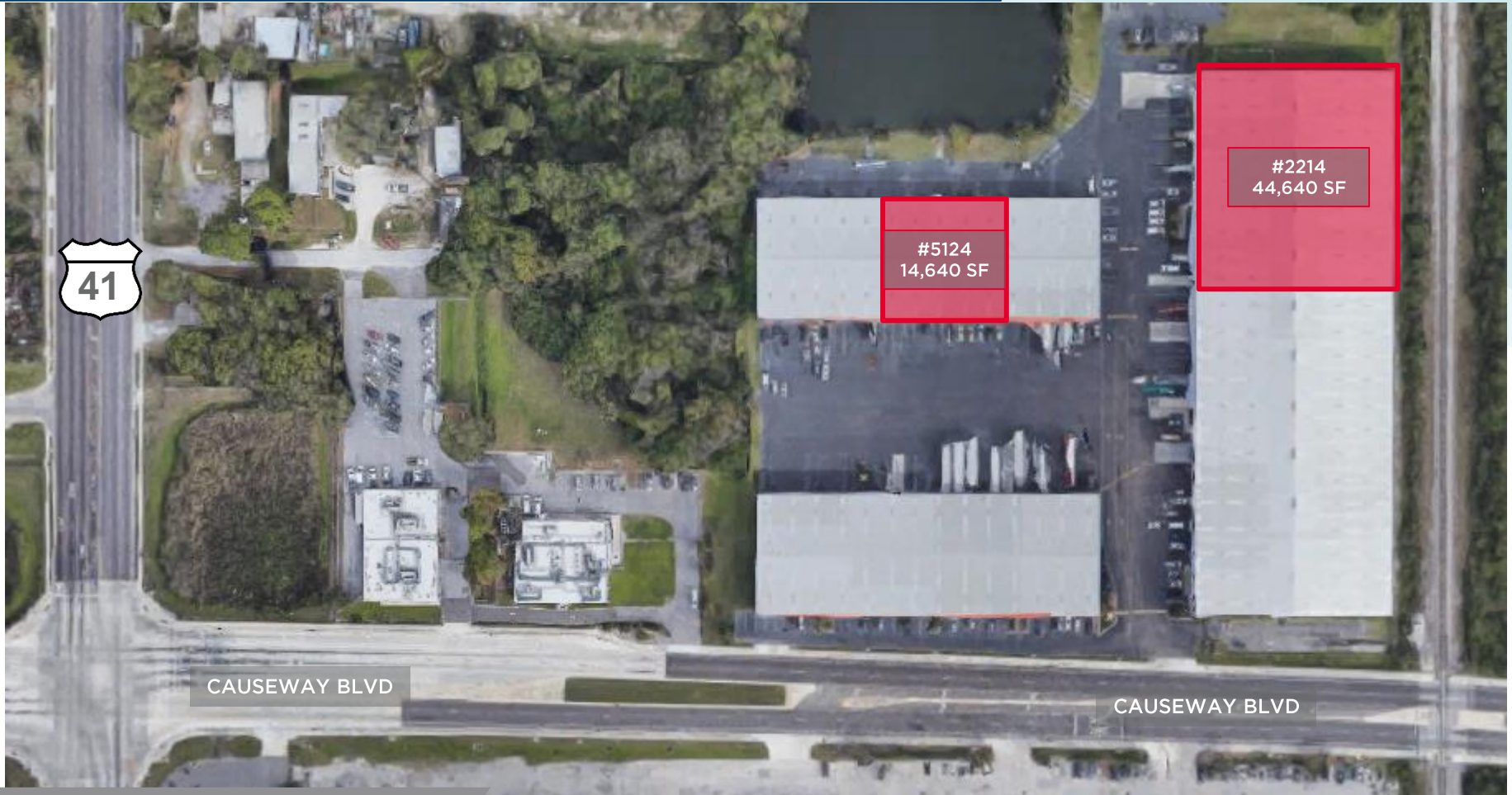
Vivian Place & Gelman Place  
Tampa, FL 33619

FOR LEASE



# MERIDIAN EAST

Vivian Place & Gelman Place, Tampa, FL 33619



## PROPERTY HIGHLIGHTS

- Dock and Grade Level Loading
- Concrete Block Construction
- Fully Sprinklered
- Easy Access to the Port, I-4, Lee Roy Selmon Expressway, US HWY 301, and I-75

# 5124 VIVIAN PLACE

## PROPERTY DETAILS

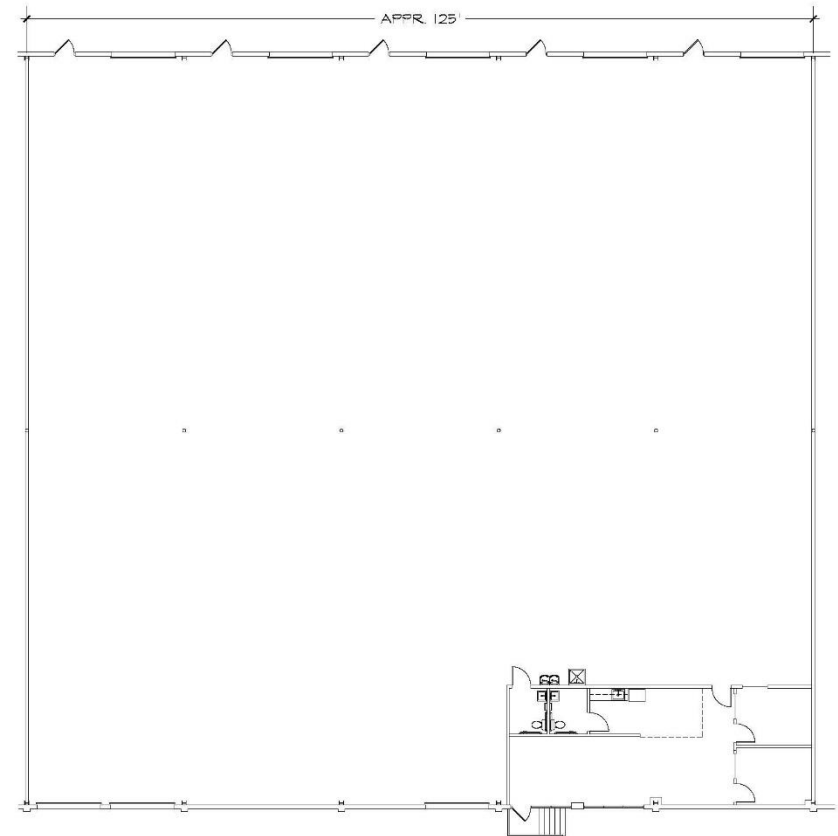
**TOTAL SF** 14,640 SF

**OFFICE SF** 1,000 SF

**CLEAR HEIGHT** 16'-20'

**LOADING** Three (3) Dock High - Front  
Five (5) Grade Level - Rear

**OCCUPANCY** Available now



## FOR ADDITIONAL INFORMATION, PLEASE CONTACT:

**TREY CARSWELL, SIOR**  
Managing Director  
+1 813 204 5314  
trey.carswell@cushwake.com

**LISA ROSS, SIOR**  
Managing Director  
+1 813 424 3211  
lisa.ross@cushwake.com

**SAM KOROLOS**  
Senior Associate  
+1 704 989 1327  
sam.korolos@cushwake.com

**MELISSA WATTERWORTH**  
Associate  
+1 813 599 2190  
melissa.watterworth@cushwake.com

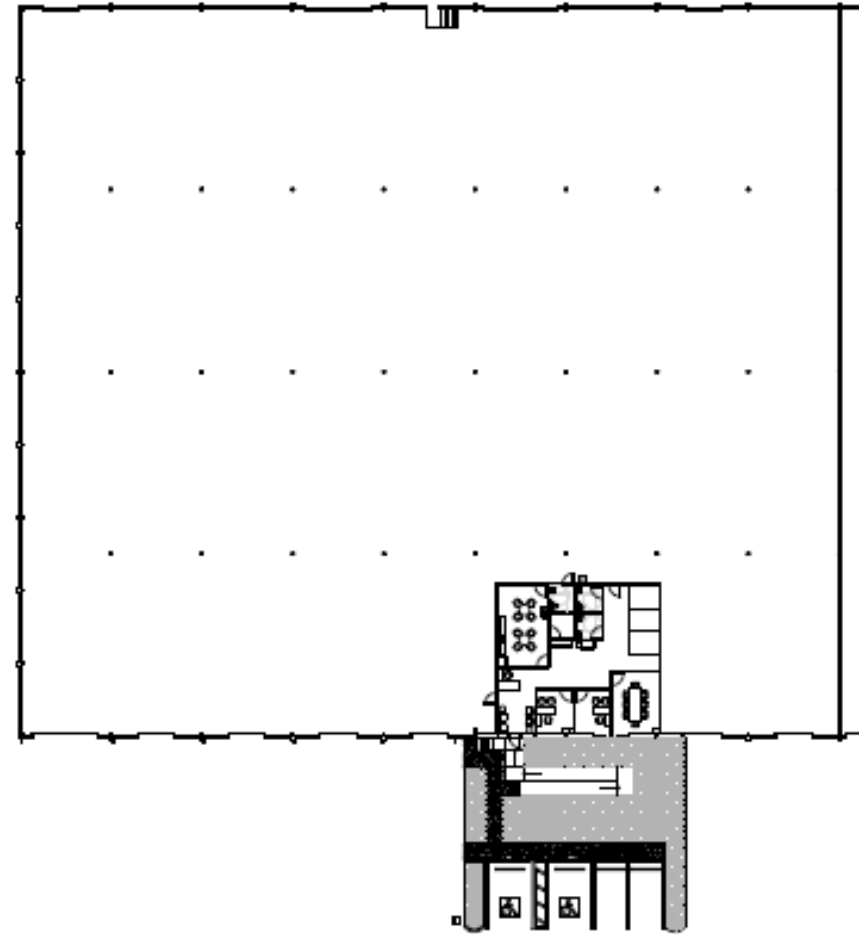
OXFORD

CUSHMAN &  
WAKEFIELD

# 2414 GELMAN PLACE

## PROPERTY DETAILS

<b>TOTAL SF</b>	44,640 SF
<b>OFFICE SF</b>	1,853 SF
<b>CLEAR HEIGHT</b>	20-24'
<b>LOADING</b>	Five (5) Dock High Two (2) Ramped Drive-In
<b>OCCUPANCY</b>	October 2025



## FOR ADDITIONAL INFORMATION, PLEASE CONTACT:

**TREY CARSWELL, SIOR**  
Managing Director  
+1 813 204 5314  
trey.carswell@cushwake.com

**LISA ROSS, SIOR**  
Managing Director  
+1 813 424 3211  
lisa.ross@cushwake.com

**SAM KOROLOS**  
Senior Associate  
+1 704 989 1327  
sam.korolos@cushwake.com

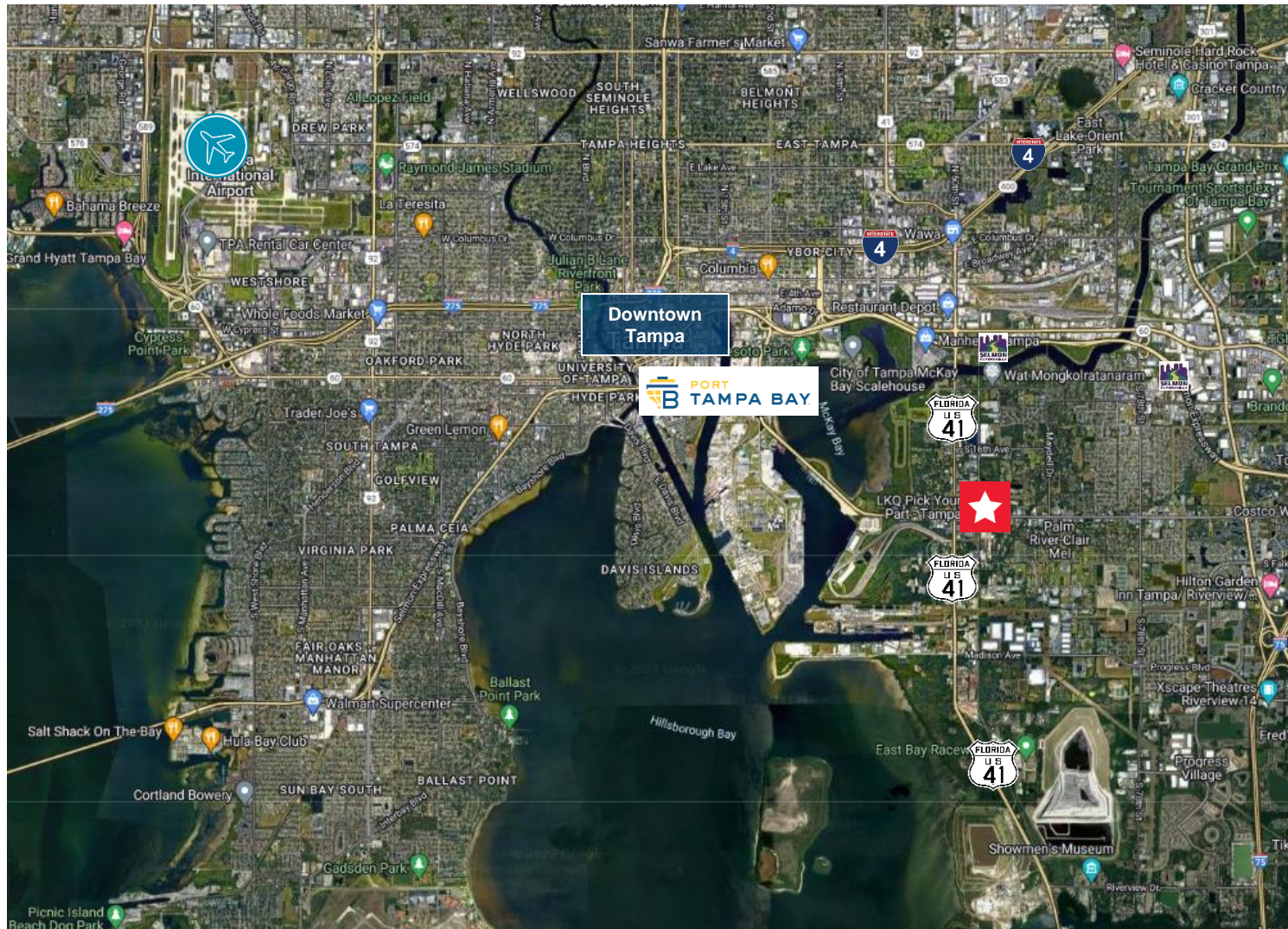
**MELISSA WATTERWORTH**  
Associate  
+1 813 599 2190  
melissa.watterworth@cushwake.com

OXFORD

CUSHMAN &  
WAKEFIELD



# MERIDIAN EAST



## FOR ADDITIONAL INFORMATION, PLEASE CONTACT:

**TREY CARSWELL, SIOR**  
Managing Director  
+1 813 204 5314  
trey.carswell@cushwake.com

**LISA ROSS, SIOR**  
Managing Director  
+1 813 424 3211  
lisa.ross@cushwake.com

**SAM KOROLOS**  
Senior Associate  
+1 704 989 1327  
sam.korolos@cushwake.com

**MELISSA WATTERWORTH**  
Associate  
+1 813 599 2190  
melissa.watterworth@cushwake.com

