

5136  
W CLIFTON ST



For Lease  
**23,433 SF**





# // PROPERTY FEATURES



**23,433 SF TOTAL**



**20' CLEAR HEIGHT**



**4,225 SF OFFICE SPACE**



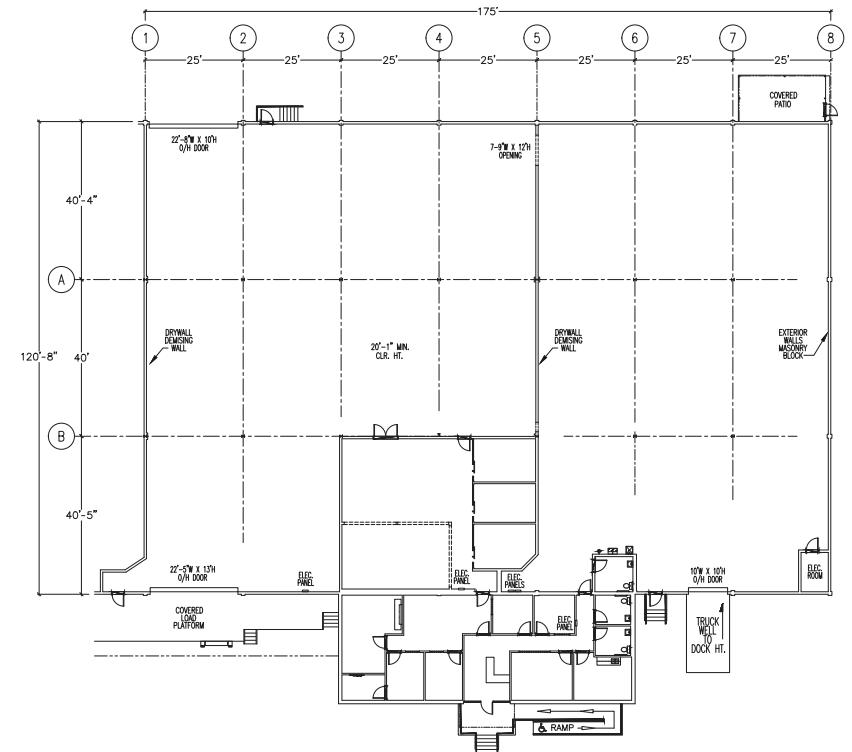
**ONE (1) 22'-5" X 13' DOCK HIGH DOOR WITH COVERED LOAD PLATFORM**



**ONE (1) 10' X 10' DOCK HIGH DOOR VIA TRUCK WELL**



**AVAILABLE 11/1/2025**



**5136 W CLIFTON ST**  
Tampa, FL 33634

# 5136

W CLIFTON ST



5136 W CLIFTON ST

W. Hillsborough Ave.

## CONTACT

TREY CARSWELL, SIOR  
Managing Director  
+1 813 230 6131  
[trey.carswell@cushwake.com](mailto:trey.carswell@cushwake.com)

LISA ROSS, SIOR  
Managing Director  
+1 813 760 3209  
[lisa.ross@cushwake.com](mailto:lisa.ross@cushwake.com)

SAM KOROLOS  
Senior Associate  
+1 704 989 1327  
[sam.korolos@cushwake.com](mailto:sam.korolos@cushwake.com)



**CUSHMAN &  
WAKEFIELD**

MELISSA WATTERWORTH  
Associate  
+1 813 599 2190  
[melissa.watterworth@cushwake.com](mailto:melissa.watterworth@cushwake.com)

©2024 Cushman & Wakefield. All rights reserved. The information contained in this communication is strictly confidential. This information has been obtained from sources believed to be reliable but has not been verified. NO WARRANTY OR REPRESENTATION, EXPRESS OR IMPLIED, IS MADE AS TO THE CONDITION OF THE PROPERTY (OR PROPERTIES) REFERENCED HEREIN OR AS TO THE ACCURACY OR COMPLETENESS OF THE INFORMATION CONTAINED HEREIN, AND SAME IS SUBMITTED SUBJECT TO ERRORS, OMISSIONS, CHANGE OF PRICE, RENTAL OR OTHER CONDITIONS, WITHDRAWAL WITHOUT NOTICE, AND TO ANY SPECIAL LISTING CONDITIONS IMPOSED BY THE PROPERTY OWNER(S). ANY PROJECTIONS, OPINIONS OR ESTIMATES ARE SUBJECT TO UNCERTAINTY AND DO NOT SIGNIFY CURRENT OR FUTURE PROPERTY PERFORMANCE.